

Distribution of caribou in relation to anthropogenic disturbance in Alberta and British Columbia



Doug MacNearney, Gordon Stenhouse, Laura Finnegan

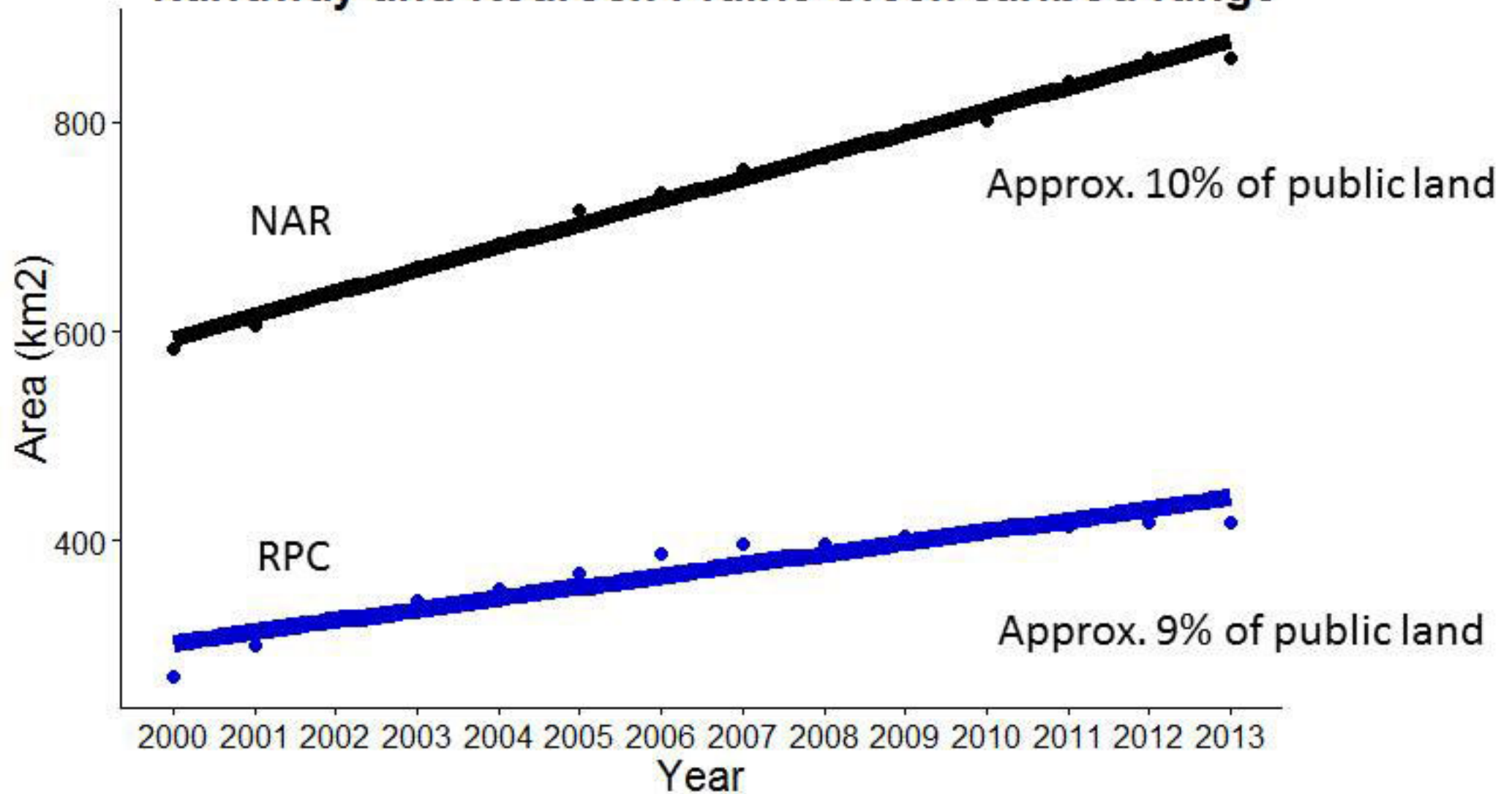
Foothills Research Institute (fRI) is a leader in developing innovative science for land and resource management.



foothills
RESEARCH INSTITUTE
Research Growing Into Practice

Anthropogenic Disturbance

Public lands <1km from anthropogenic disturbance in Narraway and Redrock-Prairie Creek caribou range

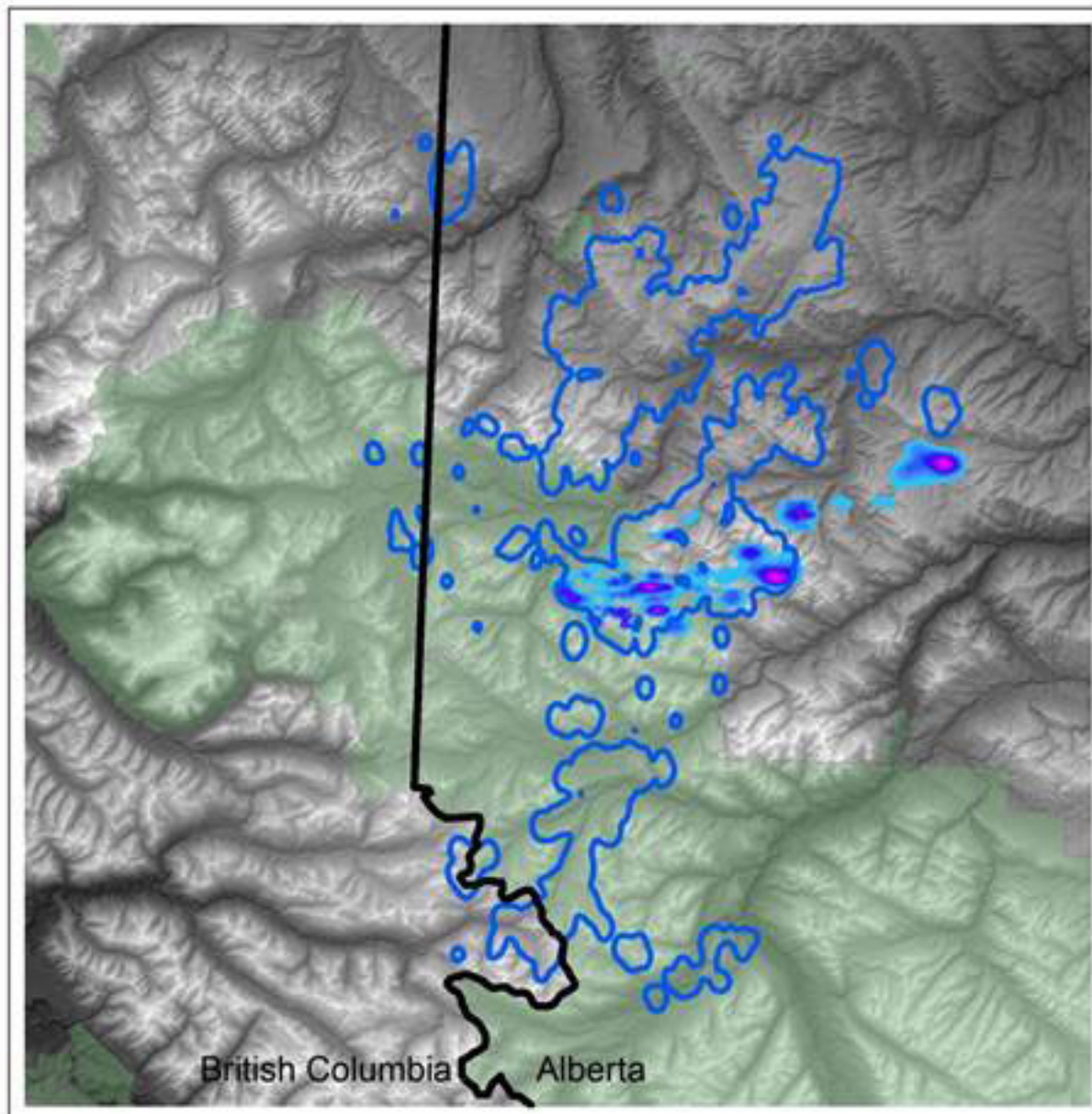


Rate = approx. 3% disturbed per decade

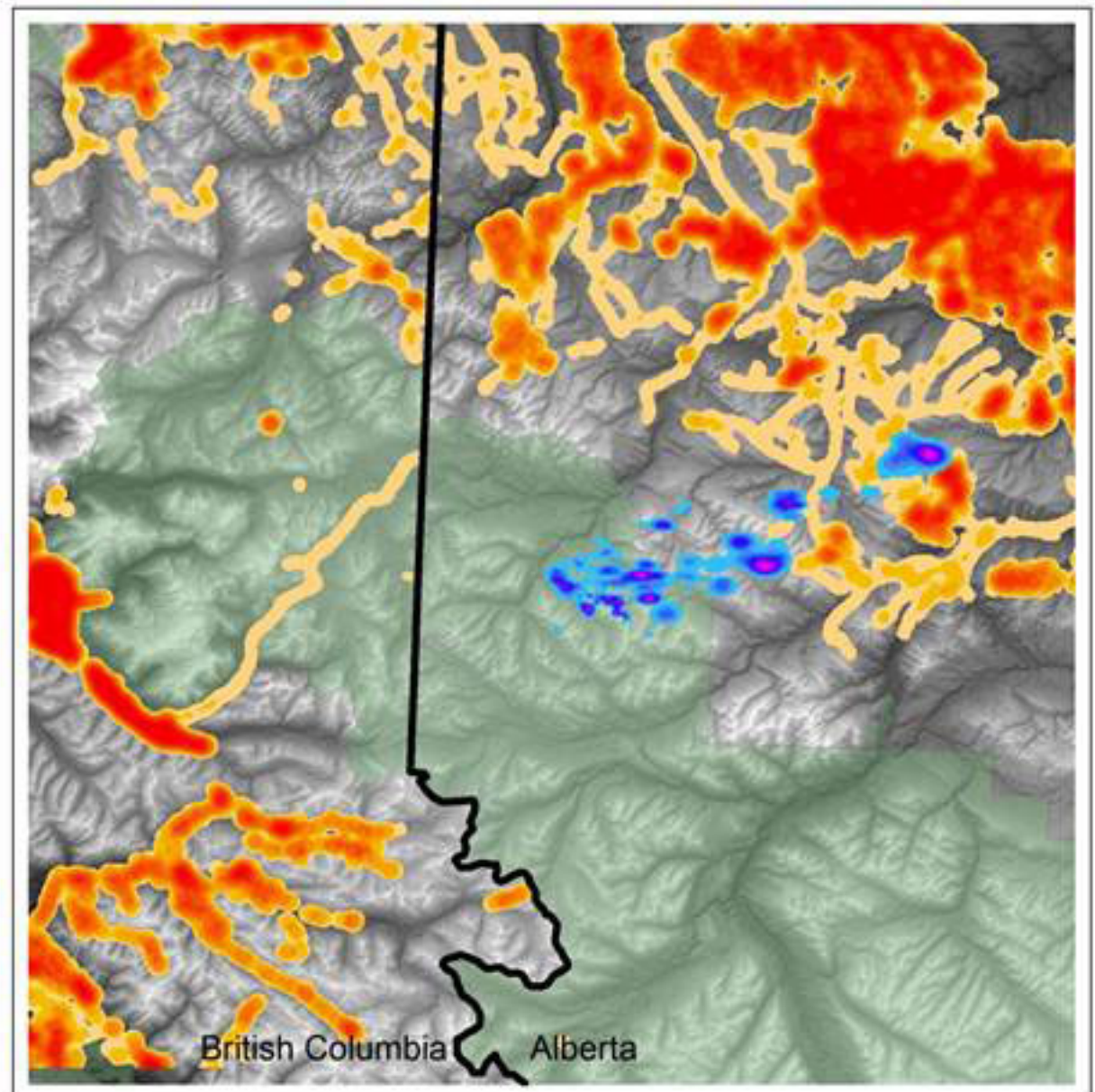
Results

Redrock-Prairie Creek; Early Winter 2011

Range fidelity



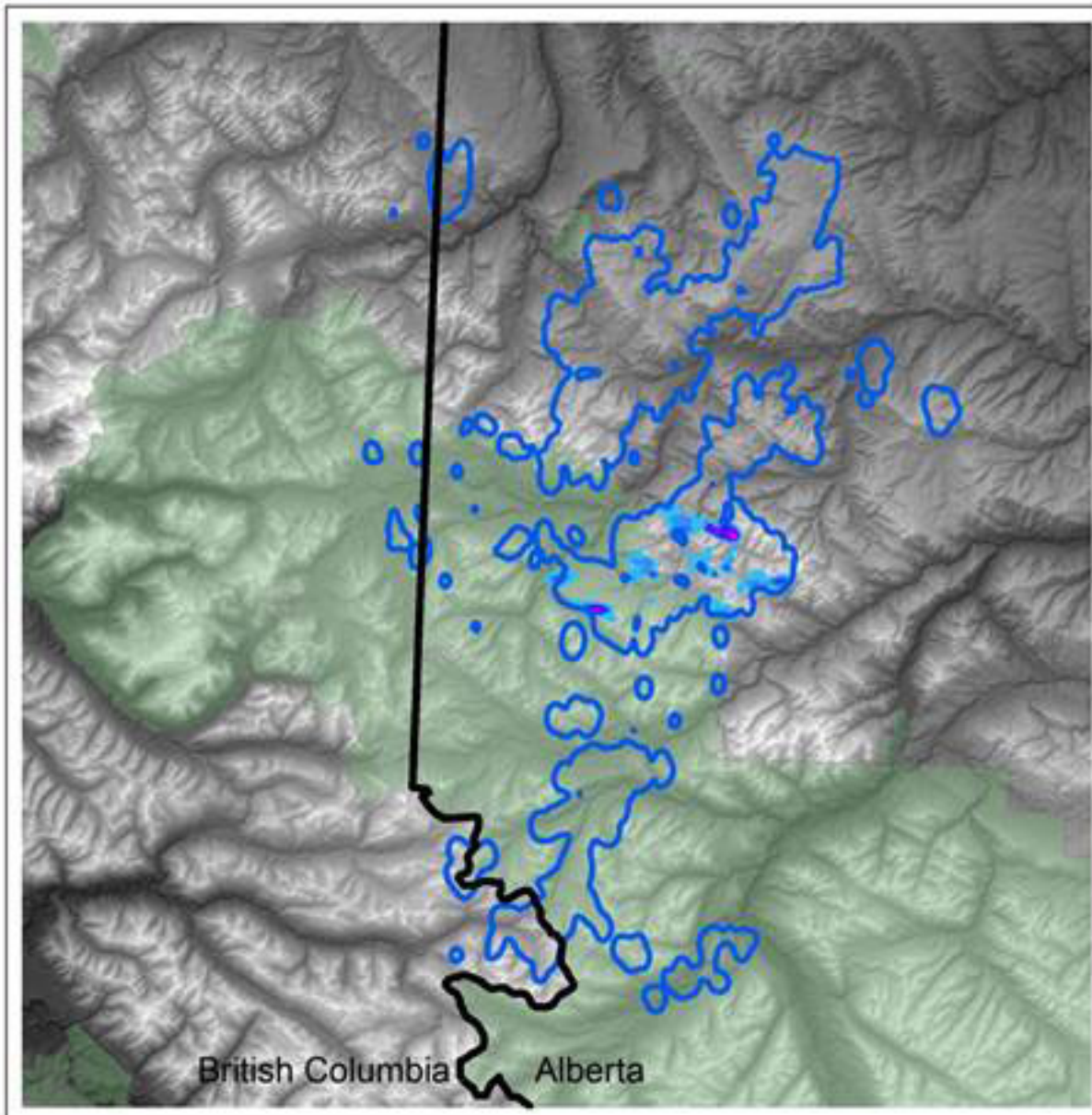
Overlap with Anthropogenic footprint



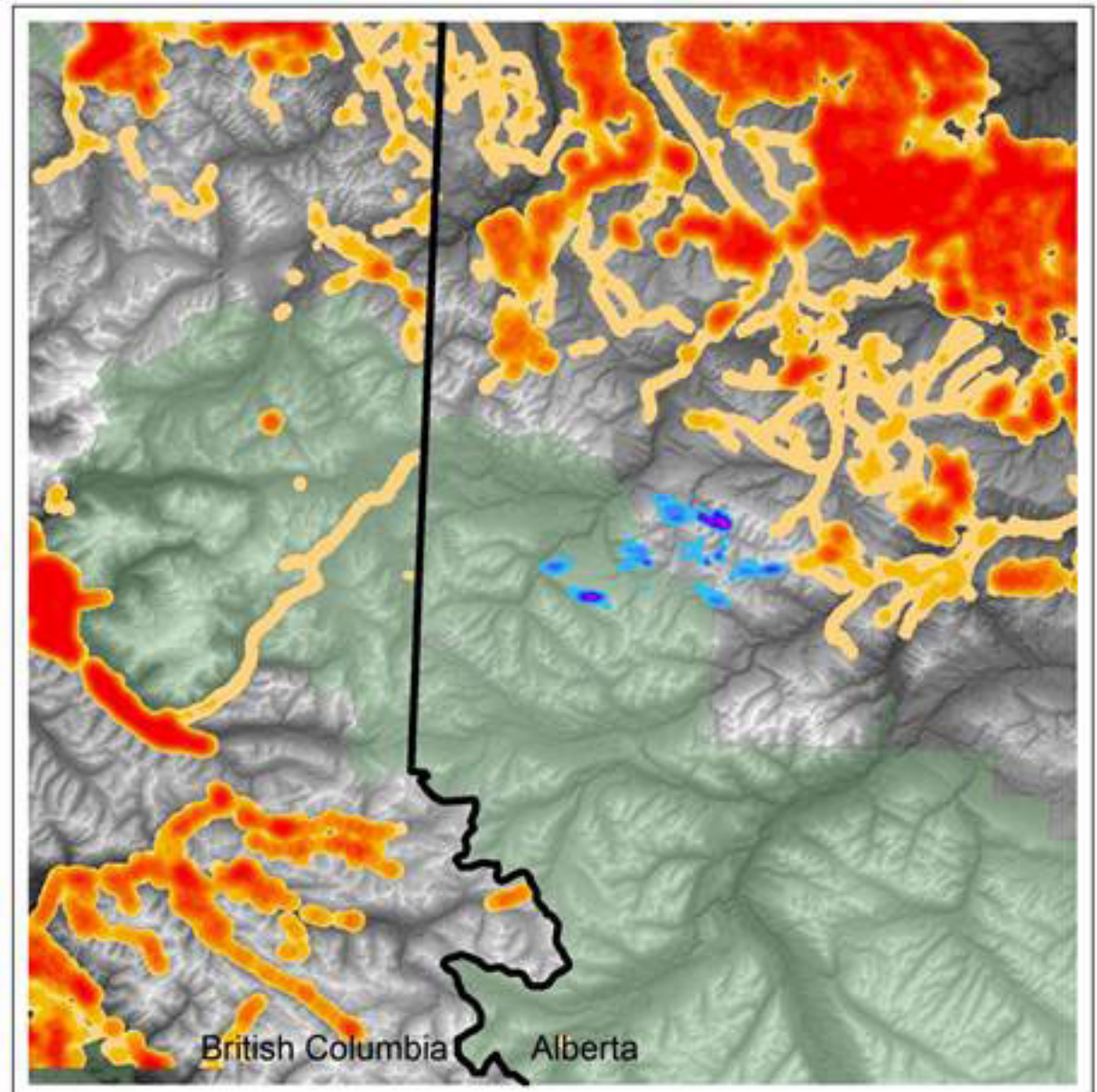
Results

Redrock-Prairie Creek; Early Winter 2013

Range fidelity



Overlap with Anthropogenic footprint



Thank you!



GIS assistance: Julie Duval, Kevin Myles, Joshua Crough

Data analysis: Laura Finnegan, Barry Nobert, Karine Pigeon, Terry Larsen, Tyler Rudolph