

## Report #1 1998 CWS Air Surveys

In response to a general lack of knowledge on the abundance and distribution of the Harlequin Duck within Alberta, the Canadian Wildlife Service in cooperation with Alberta Environment undertook helicopter surveys of the eastern slopes of Alberta in 1998 and 1999.

In 1998 the survey area encompassed streams along the eastern slopes of Alberta between the communities of Grande Cache and Nordegg. Ground truthing was provided by foot surveys on the McLeod River conducted by Bighorn Wildlife Technologies Ltd.

Local area biologists helped with selection of blocks of streams to be surveyed where harlequins were most likely to occur and assisted in the helicopter surveys. Helicopter survey methods are detailed in Gregoire et al. (1999). Global Positioning Coordinates (GPS) were recorded for all sightings as well as survey start and end points. The Universal Transverse Mercator (UTM) coordinate system was used for recording sightings of Harlequin Duck and other wildlife. Survey start and end points were recorded in Latitude and Longitude. Five digit numbers hand written in the field survey reports represent the BSOD (now WHIMIS) ID number for that observation.

What this document contains.

- A summary of the 1998 surveys (Gregoire et al. 1999. Canadian Wildlife Service Technical Report Series No. 329),
- The field results for the helicopter survey conducted between the Brazeau and North Saskatchewan Rivers
- The results of a foot survey on the Blackstone River.

---

# Harlequin Duck Surveys in the Central Eastern Slopes of Alberta: Spring 1998.

---

**Paul Gregoire, Jeff Kneteman and Jim Allen.**

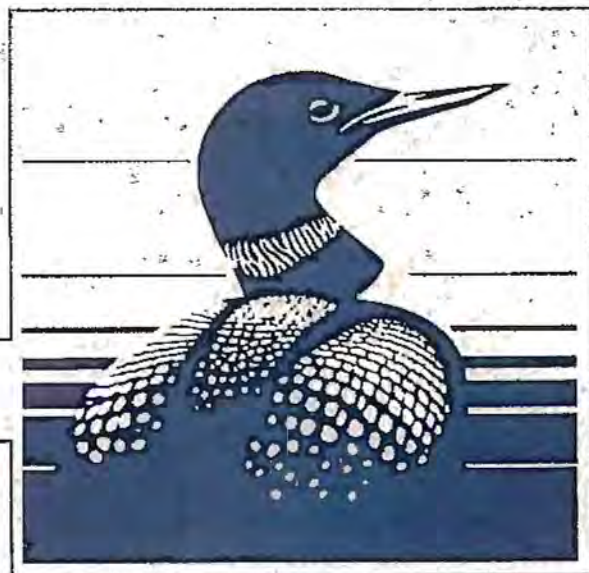
---

Prairie and Northern Region 1999  
Canadian Wildlife Service  
Environmental Conservation Branch

---

Technical Report Series Number 329

---



Environment  
Canada

Environnement  
Canada

Canadian Wildlife  
Service

Service canadien  
de la faune

Canada

# **Harlequin Duck Surveys in the Central Eastern Slopes of Alberta: Spring 1998.**

---

**Paul Gregoire  
Jeff Kneteman<sup>1</sup>  
Jim Allen<sup>2</sup>**

**Technical Report Series No. 329  
Canadian Wildlife Service  
Prairie and Northern Region**

**1999**

This report may be cited as:  
Gregoire, P., J. Kneteman and J. Allen. 1999.  
Harlequin Duck Surveys in the Central  
Eastern Slopes of Alberta: Spring 1998.  
Technical Report Series No. 329.  
Canadian Wildlife Service, Edmonton,  
Alberta.

<sup>1</sup>Alberta Fish and Wildlife, Hinton District Office.

<sup>2</sup>Alberta Fish and Wildlife, Rocky Mountain House Regional Office.

Published under the Authority of the  
Minister of Environment  
Canadian Wildlife Service

© Minister of Supply and Services Canada  
Catalogue No. CWS69-5/329E  
I.S.B.N. # 0-662-27406

Copies may be obtained from:  
Canadian Wildlife Service  
Prairie and Northern Region  
Room 200, 4999 - 98 Ave.  
Edmonton, Alberta  
T6B 2X3

## **ABSTRACT**

In response to a general lack of knowledge on the abundance and distribution of the Harlequin Duck within Alberta, the Canadian Wildlife Service in cooperation with Alberta Environment undertook surveys of the eastern slopes of Alberta. Helicopters provided an effective and efficient means to survey for Harlequin Ducks. High concentrations of Harlequin Ducks were observed on the McLeod, Sulphur and Berland Rivers, with smaller concentrations on the Muskeg and Wapiabi watercourses. Few to no Harlequin Ducks were observed on many streams located south of the Brazeau River. Harlequin concentrations on the McLeod, Berland and Wapiabi streams were not within protected areas. Harlequin Ducks appear to be uncommon and demonstrate a patchy and clumped distribution along their range within the eastern slopes of Alberta.

## **RÉSUMÉ**

Devant le manque général de données sur les effectifs et la distribution de l'Arlequin plongeur en Alberta, le Service canadien de la faune a effectué des relevés de l'espèce sur le versant est des Rocheuses dans cette province, en collaboration avec le ministère de l'Environnement de l'Alberta. Le recours à des hélicoptères s'est révélé un moyen efficace et efficient de réaliser les relevés. On a observé de fortes concentrations d'Arlequins plongeurs sur les rivières McLeod, Sulphur et Berland et de plus petites concentrations sur les rivières Muskeg et Wapiabi. En revanche, sur de nombreux cours d'eau situés au sud de la rivière Brazeau, tout au plus quelques individus ont été observés. Les concentrations relevées sur les rivières McLeod, Berland et Wapiabi n'étaient pas dans des zones protégées. Il ressort de ces relevés que l'Arlequin plongeur n'est pas une espèce commune et que sa distribution est morcelée et se distingue par la présence de grappes par endroits dans son aire sur le versant est des Rocheuses en Alberta.

## **ACKNOWLEDGEMENTS**

We thank Beth MacCallum of Bighorn Environmental Design Ltd. and her team for their cooperation with the ground truthing portion of the study. We also thank the Environment Canada Environmental Assessment Research and Development Fund Committee for providing the funding necessary for this timely survey.

## INTRODUCTION

The Harlequin Duck (*Histrionicus histrionicus*) is unique amongst waterfowl for its preference to breed along turbulent rivers and streams often associated with mountainous habitats. On the breeding grounds, the Harlequin Duck's preference for remote and difficult terrain does not readily lend itself to being studied and consequently little is known about the distribution and abundance of the Harlequin Duck in western North America. In Alberta, the Harlequin Duck breeds along the eastern slopes of the Rocky Mountains which is an area of increasing human activity and where the distribution and population size of the species is poorly understood.

Habitat loss and disturbance from logging, mining, grazing and recreational activities are potential threats to the well being of this species. The Harlequin's relationships to habitat variables are poorly understood other than at a descriptive level, therefore responses to human activity may be difficult to identify and assess in a timely fashion with the current knowledge base. The lack of reliable inventory information hinders understanding of population status and effective management. The species is believed to be characterized by patchy distribution, low densities, restricted use of habitats, low productivity and to be long-lived, all features associated with sensitive species. The Harlequin Duck has been identified as a species of concern in Washington, Montana, Wyoming, British Columbia and Alberta. The purpose of this survey was to provide needed data on the distribution and abundance of the Harlequin Duck in Alberta, to assist managers in the conservation of Harlequin Ducks and their habitat.

## OBJECTIVES

1. Identify an effective and efficient method to survey Harlequin Ducks in remote mountainous habitats.
2. Increase the proportion of the breeding range of the Harlequin Duck that has been surveyed in Alberta (necessary for formulating a population estimate for Alberta)
3. Identify Harlequin Duck concentrations and breeding streams.

## METHODS

Surveys were flown along the eastern slopes of the Rocky Mountains of Alberta in an area between the communities of Grande Cache and Nordegg (Figure 1). Because Harlequin Ducks have specific habitat requirements, local area wildlife biologists were contacted to help determine which streams were more likely to contain ducks. Due to timing and financial constraints, specific blocks or subsets

within a particular geographic area were surveyed. Surveys were timed such that the ducks had returned from the wintering grounds and were clustered on spring staging/breeding streams in the initial phases of nesting activities. This timing was critical, as Harlequin's tend to move gradually upstream and become less visible as nesting activities progress (MacCallum and Bugera 1998).

Surveys were flown in a Bell 206B helicopter. An observer/navigator was positioned in the front seat and an observer/recorder was positioned in the rear seat on the same side as the pilot. To minimize ferrying (deadheading) time, streams were flown alternately in upstream and downstream directions. Streams were flown primarily at a height just above treetops (estimated at 30m) and at an average speed of 30 knots (55 kph). The helicopter followed the stream course and flew directly over the stream or slightly to one side. Streams were followed until either the stream approached the headwaters, was deemed too small, was not visible by overhanging vegetation or a deep canyon was encountered. Global Positioning System (GPS) co-ordinates were recorded for all sightings and for survey start and end points. The time of day of each observation was also recorded and whether the birds were paired, single females or single males.

Weather conditions were considered very good overall, with predominantly overcast skies and very good visibility.

Two crews of biologists were used to undertake the surveys. The first crew flew the route between the Smoky and Brazeau Rivers and the second crew flew the block between the Brazeau and North Saskatchewan Rivers. The block of streams between the Smoky and Athabasca Rivers was flown May 26, 1998, the block between the Athabasca and Brazeau Rivers was flown May 27 and the block between the Brazeau and North Saskatchewan Rivers was flown May 28 and 29, 1998.

It was deemed necessary to compare the visibility from the helicopter with that of ground based surveys. Therefore aerial surveys of the McLeod River system were timed to overlap that of an intensive ground survey of this system undertaken by Bighorn Environmental Design Ltd. on May 27 and 28, 1998. The ground survey entailed having observers walk in or along the shorelines of all streams in the upper McLeod River system recording all birds observed. This river system was flown on May 27, 1998.

## RESULTS

### *Distribution and Abundance*

Relatively high concentrations of Harlequin Ducks were observed along the Sulphur, Berland and Muskeg Rivers located within the Smoky/Athabasca block (Figure 2). Within this block, a total of 109 birds (48 pairs) were observed on 235 kilometers of stream. The majority of these birds were observed within the confines of the Provincially designated Willmore Wilderness Park. Birds were observed on all 4 streams surveyed. (The starred checkpoints on the figures delineate the start and end points for the surveys on each watercourse.)

Within the Athabasca/Brazeau block, only the McLeod River had a high concentration of birds (42 birds, or 18 pair) (Figure 3). The Cardinal River had a relatively low occurrence, for river size, with observations of 10 ducks on 54 kilometers of surveyed stream.

In the Brazeau/North Saskatchewan River block, Harlequin Ducks were found in moderate numbers only on the Blackstone-Wapiabi drainage (Figures 4&5). A total of 37 ducks were observed on 362 kilometers of stream including stretches of 9 separate streams. No birds were observed on 4 streams and 1, 2 and 3 birds were observed, respectively, on the 3 remaining streams.

Overall, only 5 of the 15 watercourses surveyed had in excess of 20 ducks, with the remainder having between zero and ten ducks observed.

### *Densities*

The Smoky/Athabasca block provided an observed average density of 0.464 ducks per kilometer of surveyed stream whereas the Brazeau/North Saskatchewan block had only 0.102 ducks per kilometer surveyed (Table 1). The river measurements reported on Table 1 include the surveyed tributaries.

The McLeod River was particularly interesting as we observed 21 birds in a 5 kilometer stretch of river, or approximately 4.2 birds per kilometer, the highest density of birds observed during the surveys (Estimated distance between the Town of Cadomin to near the confluence with Luscar Creek).

### *Sex Ratios*

With a sample size of 198 ducks we were able to identify a total of 95 females and 103 males or an overall ratio of 48 percent female to 52 percent male (Table 1). The Smoky/Athabasca block was 47 percent female and 53 percent male (n=109); the Athabasca/Brazeau block was 44 percent female and 56 percent male (n=52); while the Brazeau/North Saskatchewan block was 57 percent female and 43 percent male (n=37).

### *Visibility Correction*

We calculated a visibility correction by comparing ground survey results on the McLeod River system with aerial counts. We observed 19 females and 23 males from the air, while Bighorn Environmental (pers. comm.) observed 23 females and 30 males for an overall visibility of 79.25 percent for the McLeod River system. Bighorn Environmental undertook their ground surveys over a two day period. On May 27 (the day we flew our survey) Bighorn Environmental surveyed Whitehorse Creek and the McLeod River downstream from Whitehorse Creek, and observed 19 females and 26 males to our 17 females and 21 males over the same area, which converted to an 84.5 percent visibility. On May 28 Bighorn Environmental surveyed the remaining smaller reaches of the McLeod River upstream of Whitehorse Creek and observed 4 males and 4 females to our 2 males and 2 females over the same area, which translated to a 50 percent visibility. The overall 79.25 percent visibility for the McLeod River system was then used to estimate visibility for all of the streams we surveyed (Table 2).

### *Population Estimates*

We also compared the number of birds observed on the aerial survey with the mark-resighting population estimate for the McLeod River, undertaken by Bighorn Environmental. We observed 42 adults on the McLeod River system compared to the mark-resighting study's estimated population of 78 birds (MacCallum *et al* 1999). Therefore our aerial visibility was 53.85 percent of the population estimate. With only one opportunity for comparative surveys, relationships of observed birds to population estimates are preliminary. However, our population estimate for those streams surveyed in the Smoky/Athabasca block is 202 ducks, 97 ducks for the surveyed streams in the Athabasca/Brazeau block and only 69 ducks for the areas surveyed in the Brazeau/North Saskatchewan block (Table 2). The estimated population of ducks per kilometer of stream is also shown on Table 2.

## DISCUSSION

Helicopters provided an effective and efficient means to survey for Harlequin Ducks. Preliminary results reinforce suggestions that Harlequin Ducks have very specific habitat requirements, are not numerous and have a patchy distribution in the Province of Alberta. These results support descriptors associated with describing the Harlequin Duck as a sensitive species.

Harlequin Ducks responded to the presence of an approaching helicopter in a unique fashion. As a helicopter approached, the ducks typically moved off the bank or shoreline into the middle of the stream and remained there, either watching the helicopter while swimming or diving as the helicopter approached. Only one Harlequin Duck flushed during the entire survey and it alighted nearby upstream. This flushing was attributed to the helicopter flying too close to the water at the time the bird was encountered (e.g. 15 meters). The Harlequin Duck's observed behaviour of moving to open water was credited with improving visibility from the helicopter and may represent how the Harlequin Duck naturally responds to avian predators. Other duck species, such as the Mallard and Green-winged Teal, readily took to the air well in advance of the helicopter.

The Willmore Wilderness Park (Smoky/Athabasca River block) provided good habitat for Harlequin Ducks, with high concentrations observed on the Sulphur, Berland and Muskeg Rivers. Most birds observed on the Muskeg River were located outside the protective boundaries of the Willmore Wilderness Park. As a general rule, in these streams, we observed fast flowing waters with pool and riffle characteristics as well as good vegetation cover along the shoreline and banks.

The McLeod River (Athabasca/Brazeau block) also had high densities of Harlequin Ducks and stream characteristics similar to that of the Smoky/Athabasca block. Only the Cardinal River had few birds and it was characterized by an abundance of riffles, a large amount of outwash gravel and lacked the pools and shoreline vegetation. Adjacent beaver ponds were searched but no birds were found.

The Bighorn Wildland Recreation Area west of Nordegg contained few birds (Brazeau/North Saskatchewan block). Many of these rivers contained glacial water and no Harlequin Ducks were observed in them, possibly a result of reduced water clarity or a smaller food supply as suggested by the colder waters. The Blackstone-Wapiabi drainage appeared to be the only stream system with more than incidental numbers of Harlequin Ducks.

The density of birds observed per kilometer of stream was not unlike that reported in other studies. However, the density of birds per kilometer was a function of where the surveys commenced on the downstream portion of the streams. This limitation is readily apparent when comparing densities of birds on the two most productive streams, the Sulphur River and the McLeod River. The lower portion of

the Sulphur River was not formally surveyed because it was very muddy, and not deemed as suitable Harlequin Duck habitat. Similarly, although few ducks were expected in the lower reaches of the McLeod River, due to stream characteristics, it was nevertheless surveyed to ensure that that was indeed the case. A more appropriate comparison (and better representation of Harlequin Duck habitat) may be a comparison of the distance between where the first downstream duck was observed and the headwaters where the survey ended. If this is done, then the Sulphur and McLeod Rivers, respectively, have similar densities of 0.393 and 0.325 females per kilometer. Considering only the area between where the first and last duck was observed on a stream, may also yield similar results.

An ongoing Harlequin Duck research and monitoring program on the McLeod River, undertaken by Bighorn Environmental, provided an opportunity to compare a subset of our aerial counts to that of ground based inventories. We noted minor limitations, such as, Bighorn Environmental conducted their ground counts over a two day period and it was therefore possible they may have counted some of the birds twice (although the population was well marked). We also found that aerial visibility was reduced in the uppermost reaches of the McLeod River due to overhanging vegetation and trees. However, despite these limitations, because the great majority (85 percent) of birds were observed in the lower sections of the McLeod River, and because we observed that stream conditions on these portions were similar to those encountered in other surveyed areas, we accepted the overall 79.25 percent air/ground visibility as a reasonable approximation of visibility from the air. Also, because there was mark-resighting data available for the McLeod River, we used this information to estimate Harlequin Duck populations for the watersheds we surveyed, using our 53.85 percent of population visibility estimation. With only one year of comparative data, caution should be exercised when interpreting the population results.

How do our observations compare to other known concentrations of Harlequin Ducks in Alberta? Smith (1999a) using mark-resighting data estimated a population of 157 adult Harlequin Ducks on the Bow River in Banff National Park, the largest known in the Province of Alberta. Other known concentrations include the Maligne River in Jasper National Park (Hunt 1996), where 31 adults were banded in one year and they estimated the population exceeded 60 individuals. Smith (1999b) estimated a population of 41 and 23 adult Harlequin Ducks, respectively, on the Kananaskis and Elbow Rivers using mark-resighting data. Our observations to date place the McLeod, Sulphur and Berland Rivers as having concentrations that are among the largest known in the Province. The Muskeg River and Wapiabi Creek also had notable concentrations. The McLeod, Muskeg and Wapiabi watercourses are not protected and would merit consideration by resource managers.

We intend to continue to survey the eastern slopes to inventory important Harlequin Duck habitats, thereby providing decision makers with the information necessary to better manage the Harlequin Duck resource within Alberta. We also plan to continue to refine the aerial versus ground visibility comparisons.

## LITERATURE CITED

- Hunt, Bill. 1996. The Breeding Ecology of Harlequin Ducks in the Maligne Valley. Presentation to the Maligne Valley Collaborative Process Group. Unpublished Report. 7 pp.
- MacCallum, B. and M. Bugera. 1998. Harlequin Duck use of the McLeod River Watershed: 1997 Progress Report for the Cheviot Harlequin Duck Study. Bighorn Environmental Design Ltd. 64pp.
- MacCallum, B., B. Godsolve and M. Bugera. 1999. Harlequin Duck use of the McLeod River Watershed: 1998 Progress Report for the Cheviot Harlequin Duck Study. Bighorn Environmental Design Ltd. 40pp.
- Semenchuk, G. 1992. The Atlas of Breeding Birds of Alberta. Federation of Alberta Naturalists. Edmonton, Alberta. 390pp.
- Smith, C. M. 1999a. Banff National Park Harlequin Duck Research Project: 1998 Progress report. Unpublished Technical Report, Heritage Resource Conservation, Banff National Park, Banff, AB. 40 pp.
- Smith, C. M. 1999b. Harlequin Duck Research in Kananaskis Country, Alberta, in 1998: Kananaskis River and Elbow River. Unpublished Technical Report, Alberta Natural Resources Service, Canmore, AB. 43 pp.

**Table 1: Observed numbers and densities of Harlequin Ducks.**

Stream	Km Flown	Prs	Fem	Male	Total Ducks	Pairs Per Km	Ducks Per Km
<b>Between Smoky and Athabasca River</b>							
Little Berland River	25.9	4	1		9	0.154	0.347
Berland River	76.05	16		4	36	0.21	0.473
Muskeg River	74.37	11		1	23	0.148	0.309
Sulphur River	58.63	17	2	5	41	0.29	0.699
<b>SUB TOTAL</b>	<b>234.95</b>	<b>48</b>	<b>3</b>	<b>10</b>	<b>109</b>		
<b>SUB MEAN</b>						<b>0.204</b>	<b>0.464</b>
<b>Between Athabasca and Brazeau River</b>							
McLeod River	86.95	18	1	5	42	0.207	0.483
Cardinal River	53.99	4		2	10	0.074	0.185
<b>SUB TOTAL</b>	<b>140.94</b>	<b>22</b>	<b>1</b>	<b>7</b>	<b>52</b>		
<b>SUB MEAN</b>						<b>0.156</b>	<b>0.369</b>
<b>TOTAL</b>	<b>375.89</b>	<b>70</b>	<b>4</b>	<b>17</b>	<b>161</b>		
<b>MEAN</b>						<b>0.186</b>	<b>0.428</b>
<b>Between Brazeau and North Saskatchewan River</b>							
Blackstone River	54.31	3	1	1	8	0.055	0.147
Wapiabi Creek	37.60	10	3		23	0.266	0.612
Brown Creek	27.35	1			2	0.037	0.073
Chungo Creek	27.76				0	0	0
Bighorn River	37.80				0	0	0
Job Creek	20.64				0	0	0
Brazeau River	31.67	1	1		3	0.032	0.095
Cline River	88.94		1		1	0	0.011
North Saskatchewan River	36.06				0	0	0
<b>TOTAL</b>	<b>362.13</b>	<b>15</b>	<b>6</b>	<b>1</b>	<b>37</b>		
<b>MEAN</b>						<b>0.041</b>	<b>0.102</b>
<b>GRAND TOTAL</b>	<b>738.02</b>	<b>85</b>	<b>10</b>	<b>18</b>	<b>198</b>		
<b>GRAND MEAN</b>						<b>0.115</b>	<b>0.268</b>

**Table 2: Estimated numbers of Harlequin Ducks.**

Stream	Visibility Correction <sup>1</sup>		Estimated Population <sup>2</sup>	
	# Ducks	Ducks per km of stream	# Ducks	Ducks per km of stream
<b>Between Smoky and Athabasca River</b>				
Little Berland River	11.4	0.438	16.7	0.643
Berland River	45.4	0.597	66.7	0.876
Muskeg River	29.0	0.390	42.6	0.572
Sulphur River	56.8	0.882	76	1.294
<b>TOTAL</b>	<b>137.5</b>		<b>202</b>	
<b>MEAN</b>		<b>0.585</b>		<b>0.86</b>
<b>Between Athabasca and Brazeau River</b>				
McLeod River	53.0	0.609	77.8	0.894
Cardinal River	12.6	0.233	18.5	0.342
<b>TOTAL</b>	<b>65.5</b>		<b>96</b>	
<b>MEAN</b>		<b>0.466</b>		<b>0.68</b>
<b>Between Brazeau and North Saskatchewan River</b>				
Blackstone River	10.1	0.185	14.8	0.272
Wapiabi Creek	29.0	0.772	42.6	1.133
Brown Creek	2.5	0.092	3.7	0.135
Chungo Creek	0	0	0	0
Bighorn River	0	0	0	0
Job Creek	0	0	0	0
Brazeau River	3.8	0.120	5.6	0.176
Cline River	1.3	0.014	1.9	0.020
North Saskatchewan River	0	0	0	0
<b>TOTAL</b>	<b>46.7</b>		<b>69</b>	
<b>MEAN</b>		<b>0.129</b>		<b>0.19</b>
<b>GRAND TOTAL</b>	<b>249.8</b>		<b>367</b>	
<b>GRAND MEAN</b>		<b>0.338</b>		<b>0.50</b>

<sup>1</sup> Estimated number of ducks using the 79.25 percent air/ground visibility correction.

<sup>2</sup> Estimated number of ducks using the 53.85 percent population estimate visibility correction.

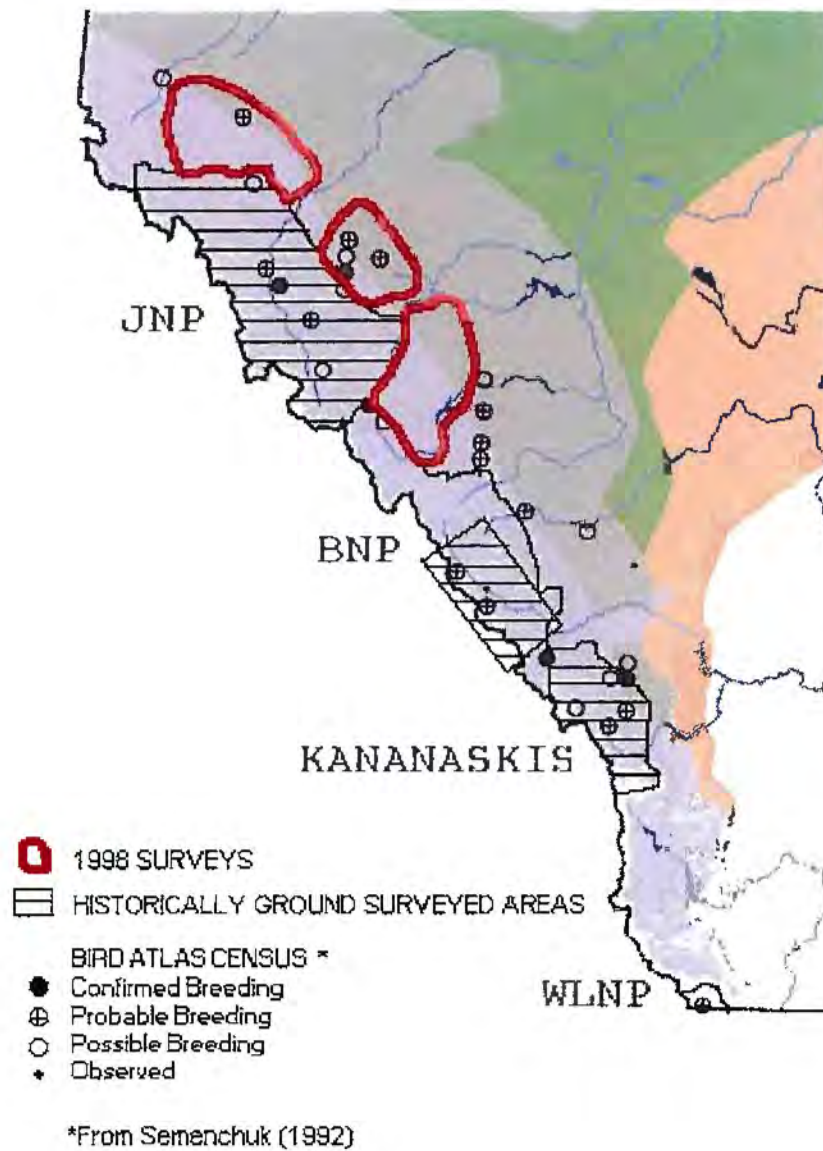


Figure 1: Areas surveyed in 1998.

# Between Brazeau River and North Saskatchewan River

(South portion)

-  Pair
-  Female
-  Male
-  Checkpoint



1:250 000  
0 km 6

Produced by



Canadian Wildlife Service

# Between Brazeau River and North Saskatchewan River

(North portion)

-  Pair
-  Female
-  Male
-  Checkpoint



1:250 000

0 km 6

Produced by

Canadian Wildlife Service



# Between Athabasca River and Brazeau River

- ▲ Pair
- Female
- Male
- ★ Checkpoint



1:250 000

0 km 6



# Between Smoky River and Athabasca River

- ▲ Pair
- Female
- Male
- ★ Checkpoint



1:250 000

0 km 6

Produced by



Canadian Wildlife Service  
Resource Conservation Division  
Prairie and Northern Region, 1999

HARLEQUIN DUCK SURVEY  
WMU'S 434, 432 AND 430  
MAY 28 AND 29, 1998

#### Introduction

In order to determine the number of harlequin ducks in the area between the Brazeau River and the North Saskatchewan River and the Forestry Trunk Road and the Banff/Jasper Park boundary, an aerial survey was conducted on the major drainage's in that area. The survey took 9.7 hours of helicopter time and 37 harlequin ducks were observed. There were 15 pair, 6 lone females and 1 lone male.

#### Methods

A Bell 206 Jet Ranger was used in the survey. There was an observer/navigator in the front and an observer recorder in the back. The two observers sat on the same side of the aircraft as it flew up one side of the river. The helicopter flew slow and followed the rivercourse to a point where the stream was too small or was not observable because of overhanging trees or if it was in a deep canyon. The rivers were flown both upstream and downstream in order to minimize deadheading time.

A GPS co-ordinate was taken to mark where the ducks were observed.

#### Results and Discussion

A total of 37 harlequin ducks were observed on the survey. The composition was 15 pair, 1 lone drake, 5 lone hens and 1 hen associated with a pair. Ten of the fifteen pairs were found in groups of 2 or 3. The ducks were most often found in slower moving water with 7 of them on still water in beaver dams and off river ponds. The harlequin ducks were generally observed in the higher reaches of the rivers where the water was clear. The rivers which had glacial water did not have any harlequin ducks observed in them, possibly because of water clarity or possibly a small food supply, as colder rivers would have fewer aquatic invertebrates.

The harlequin ducks move offshore, into the middle of the streams as the helicopter approaches. This behaviour makes them easy to observe. Their escape behaviour is to dive once they are in deeper water. There were no cases of the ducks flushing. The only ducks that would be unobservable would be if some chose to hide under overhanging vegetation. The Blackstone River had been surveyed from the ground on May 21 and 22. Fourteen ducks were observed on that survey. The aerial survey of the same river found 8 ducks but all were in different locations other than one lone female, which was readily observed, from the air. The areas which had ducks on the ground survey were thoroughly searched from the air and it is felt that they had moved, confirmed by observing ducks in different places than during the ground survey. The ducks observed during the air survey had moved upstream from .5 to 10 kilometres.

Nondegg. dbf

Table 1. Harlequin Duck Survey May 28 and 29, 1998-06-04

	River	Pair	Male	Female	UTM	B500 #
9.	Blackstone R.			1	0531141 5830587	47903
10			1		0529444 5829394	47904
11		3			0528677 5828640	47905
	Smith Creek					
	George Creek					
12	Wapiabi R.	1			0531435 5816192	47995
13		2			0540157 5814446	47998
14		3			0539910 5814780	47989
15		1			0539900 5817011	47990
16		1		1	0542219 5820922	47992
17				1	0542176 5824900	47994
18		2			0542818 5827582	47993
19				1	0543848 5828600	47991
20	Brown Creek	1			0525536 5844528	47931
	Chungo Creek					
	Bighorn R.					
	Littlehorn R.					
	Job Creek					
21	Brazeau R.	110 119007	498250 509650	1	Lat 52-20.16 Long 117-01.65	47929
22		1			0496105 5793583	47930
	Cataract Cr.					
23	Cline R.			1	0510858 5776913	47953
	McDonald Cr.					
	Coral Cr.					
	N. Sask River					
	Total Ducks	15 pr x 2 = 30	1	6	37	

Table 2. Area surveyed. Harlequin Duck Survey. May 28 and 29, 1998.

River	Start	Finish UTM
Blackstone R.	At gravel pit adjacent to trunk road	At junction of Mons Cr.
Smith Cr.	At junction with Blackstone	Lat 52-31.67 Long 116-36.65
George Cr.	At junction with Blackstone	Lat 52-31.11 Long 116-37.50
Wapiabi R.	At junction with Blackstone	Lat 52-30.56 Long 116-31.25
Brown Cr.	At trunk road	Lat 52-44.21 Long 116-40.50
Chungo Cr.	At trunk road	Lat 52-40.56 Long 116-40.00
Bighorn R.	At Highway 11	Lat 52-23.33 Long 116-33.30
Littlehorn Cr.	At junction with Bighorn	Lat 52-17.58 Long 116-33.25
Job Cr.	At junction with Brazeau	Lat. 52-22.56 Long 116-45.18
Brazeau R.	At junction with Job	At junction with Four Point Cr.
Cataract Cr.	At junction with Cline	Lat 52-11.25 Long 116-55.82
Cline R.	At Pinto Lake	At Highway 11
McDonald Cr.	At junction with Cline	Lat 52-19.23 Long 116-54.73
Coral Cr.	At junction with Cline	Lat 52-19.23 Long 116-54.73
N. Sask R.	At junction with Cline	Lat 52-00.83 Long 116-35.90

Table 3. Flight log. Harlequin duck survey. May 28 and 29, 1998.

Flight Leg	Start Time	End Time	Total Time
Blackstone, Smith, George, Wapiabi	11:00	13:12	2.2
Brown, Chungo	13:57	14:49	0.86
Bighorn, Littlehorn	10:45	11:26	0.68
Job, Brazeau	11:36	12:20	0.73
Cataract, Cline	12:25	13:00	0.58
McDonald, Coral	13:55	14:50	0.92
North Sask	15:00	15:11	0.18
Survey time			6.15
Deadhead time			3.55
Total Time			9.70

Table 4. Miscellaneous Sitings

Blackstone	Cow moose with calf 6 mule deer 1 Canada Goose 1 Male Common Merganser
Smith	3 elk
George	3 Male Common Merganser 1 wolf carcass
Wapiabi	1 moose 1 mallard 1 male Common Merganser 3 white-tailed deer
Brown Creek	1 pair Canada Goose 1 pair Common Merganser
Chungo Creek	2 moose
Bighorn	3 white-tailed deer
Littlehorn	9 bighorn sheep
Job Creek	
Brazeau	1 bald eagle
Cline River	5 bighorn sheep 2 pair Common Mergansers 1 mule deer
McDonald Creek	9 bighorn sheep 1 caribou
Coral Creek	1 mule deer
N. Sask. River	6 Canada Geese 4 Bufflehead 1 white-tailed deer 1 osprey nest 40 pelicans

# BLACKSTONE RIVER HARLEQUIN DUCK SURVEY MAY 20 AND 21, 1998

## Introduction

On May 20 and 21, 1998, a ground survey was conducted of the Blackstone River for Harlequin Ducks. Fourteen harlequins were observed, composed of 6 pair, 1 single male and 1 single female.

## Methods

The river was divided into seven segments with start finish points based on access. Starting at the downstream end one observer started walking along the river while the other observer drove to the next point and also started walking up the river. When the first observer reached the vehicle, they drove to the next point and started surveying from there upstream. In this fashion the observers leapfrogged segments until the whole river was surveyed from the forestry trunk road to the confluence of Smith Creek. The access points and segments are shown on the attached maps.

## Results

	Harlequin Ducks observed	Location (UTM)		BSCD ID
		Easting	Northing	
1	1 pair	529,370	5828.20	5828200 47895
2	1 pair	542,221	5830.032	47899
3	1 pair	531,029	5830.084	47896
4	1 female	530,370	5829.730	47897
5	1 pair	548,040	5830.950	47896
6	1 pair	529,370	5828.000	47901
7	1 pair	529,970	5829.560	47902
8	1 male	548,421	5832.075	47900

Date	Segment	Length (km)	Survey Time
May 20, 1998	Gravel pit on trunk road to Blackstone Recreation Area	6.0	5 hr
	Blackstone Recreation Area to Cutoff Creek	3.5	2 hr
	Cutoff Creek to large horseshoe bend	2.2	2 hr
	Horseshoe bend to old oil road	2.9	1 hr 45 min
May 21, 1998	Oil road to meadow	4.4	2 hr 40 min
	Meadow to bend in road	5.7	3 hr 20 min
	Bend in road to gap	3.2	2 hr
	Gap to Smith Cr.	1.2	30 min
Totals		29.1	19 hr 15 min

The maps and data sheets are attached