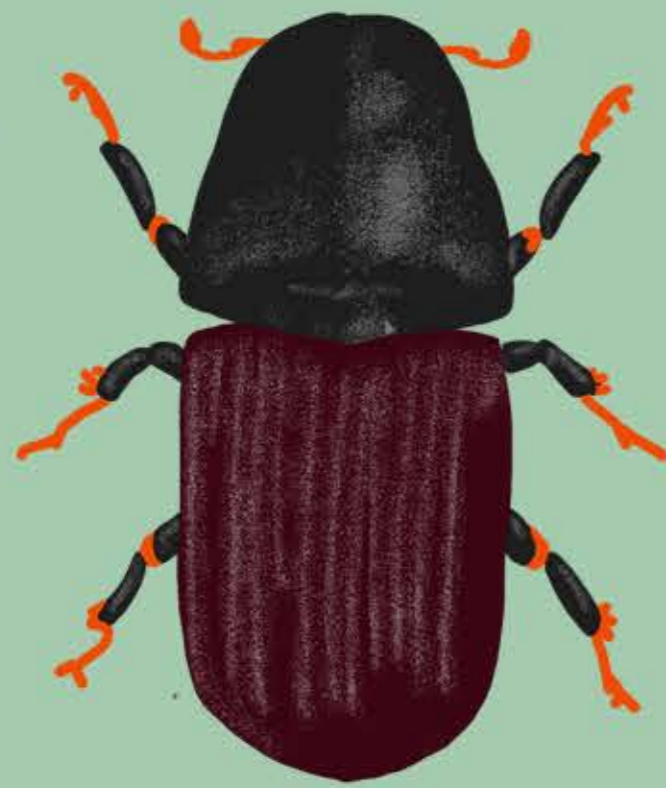


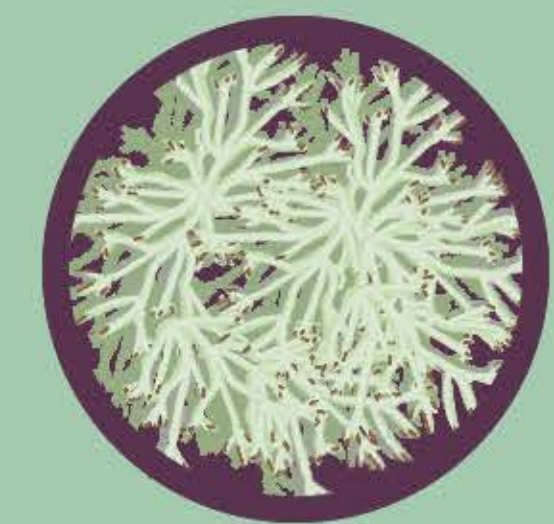
# Controlling mountain pine beetle while maintaining caribou forage

Invasive pest of mature pine.



Some control strategies can help **decrease** the number of beetles.

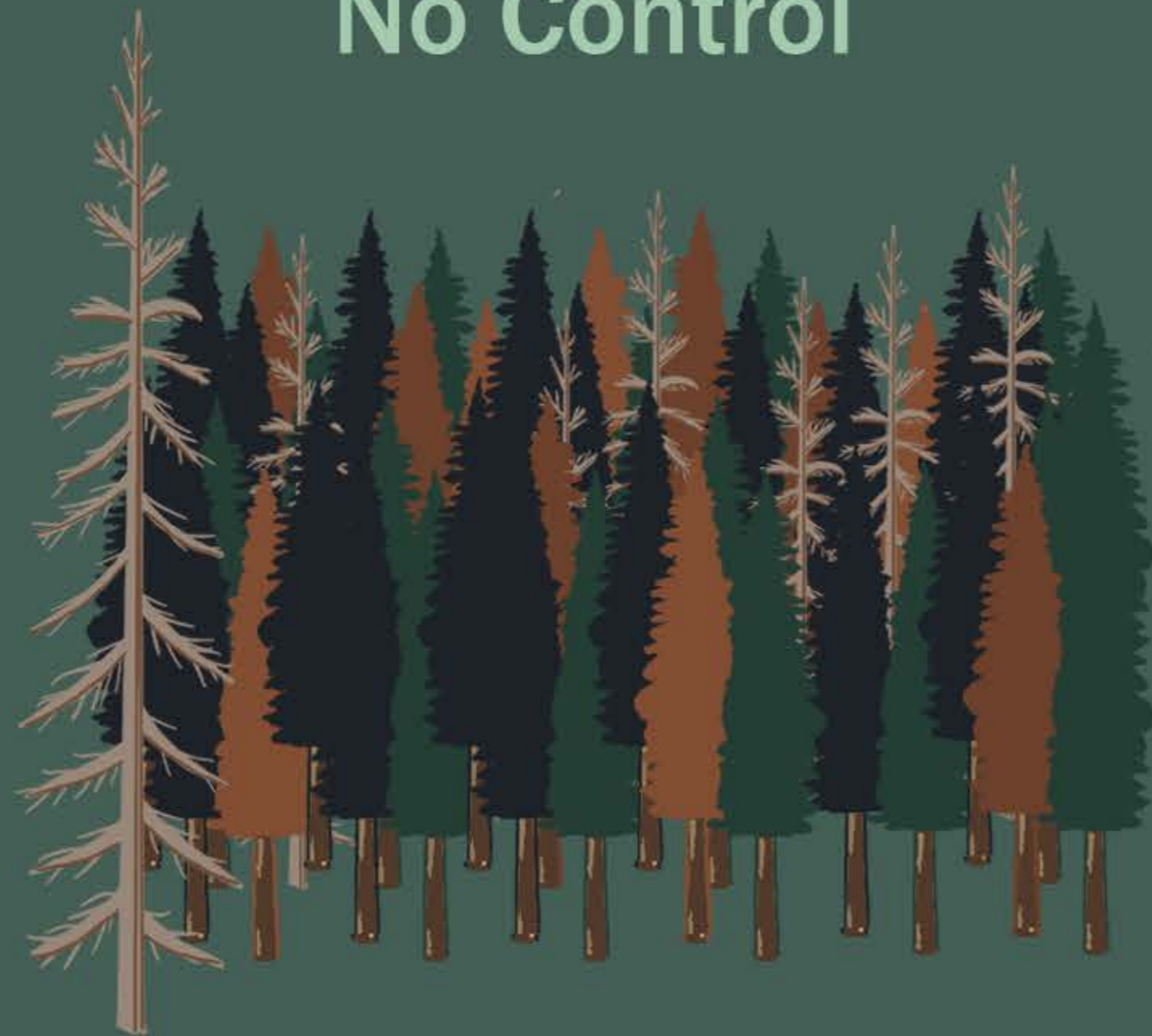
Are control strategies also impacting **caribou**?



Terrestrial **lichen** is a main food source for caribou.

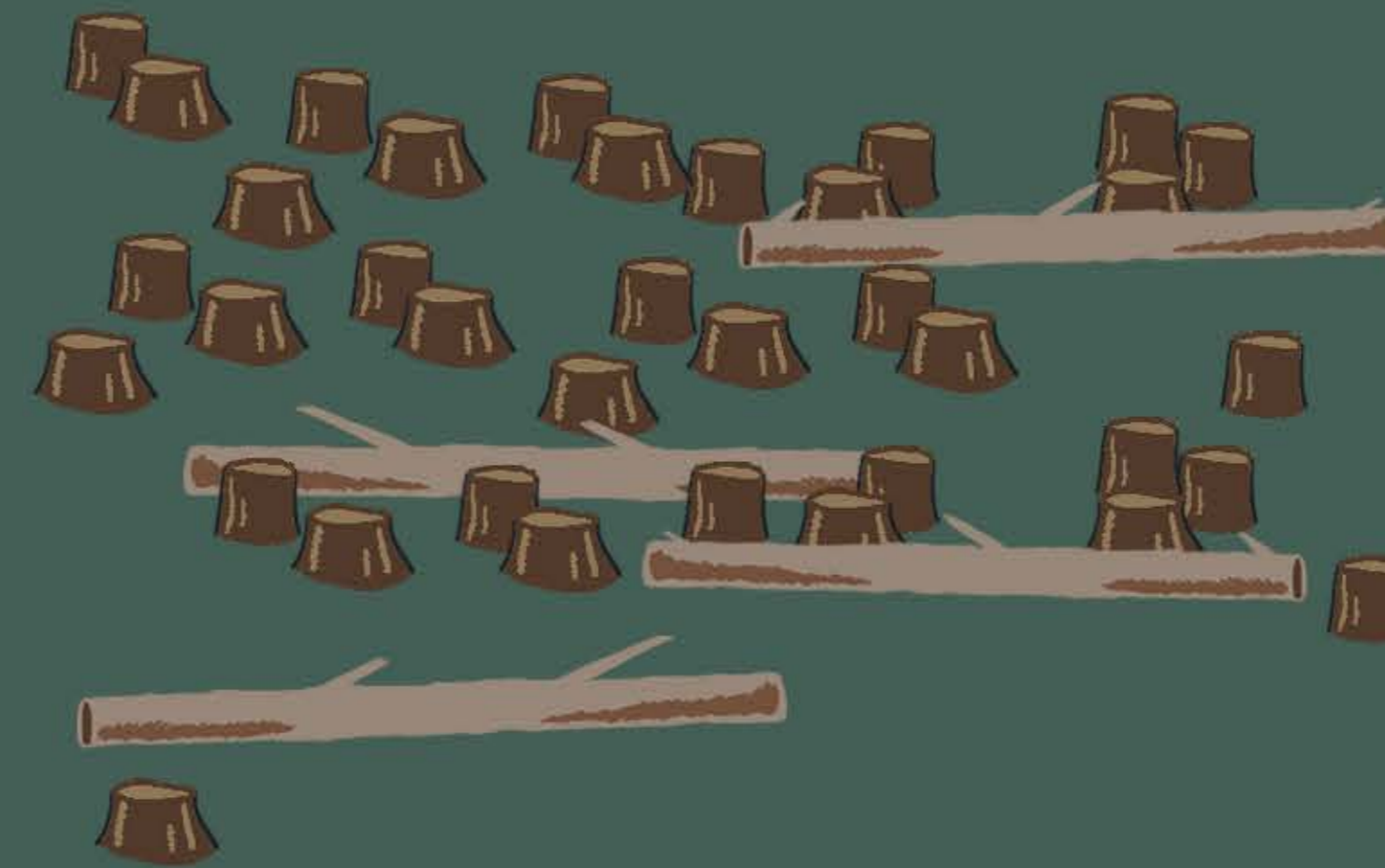
We measured **lichen cover** in four beetle-control strategies.

## No Control



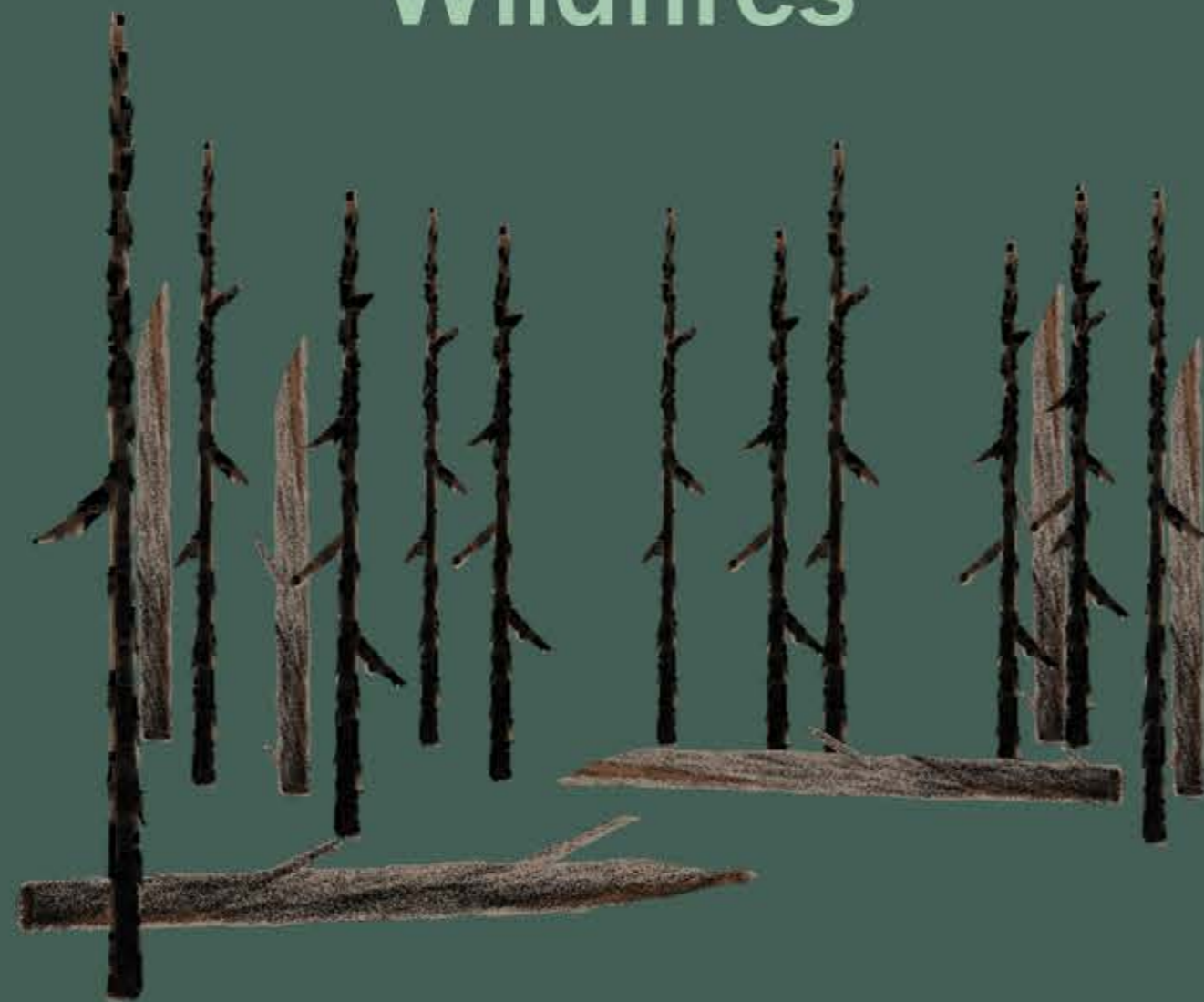
Little evidence of lichen change.

## Timber Harvest



↓ Less lichen up to **10 years** after harvest.

## Wildfires



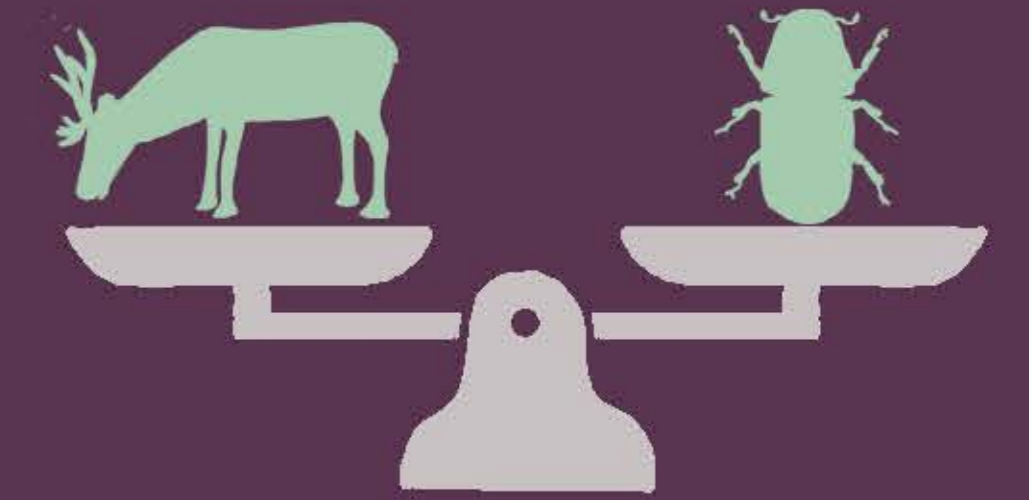
↓ Less lichen up to **20 years** after fire.

## Cut & Burn



Little evidence of lichen change.

## Cut & Burn



Among the four control strategies, cut-and-burn:

- limits the spread and negative effects of mountain pine beetle
- limits the negative impacts of control strategies on caribou

