

# Adaptive Forest Management/ History Program Foothills Research Institute AGM 2009



Prepared by: Peter Murphy and Bob Udell

# Core Study area

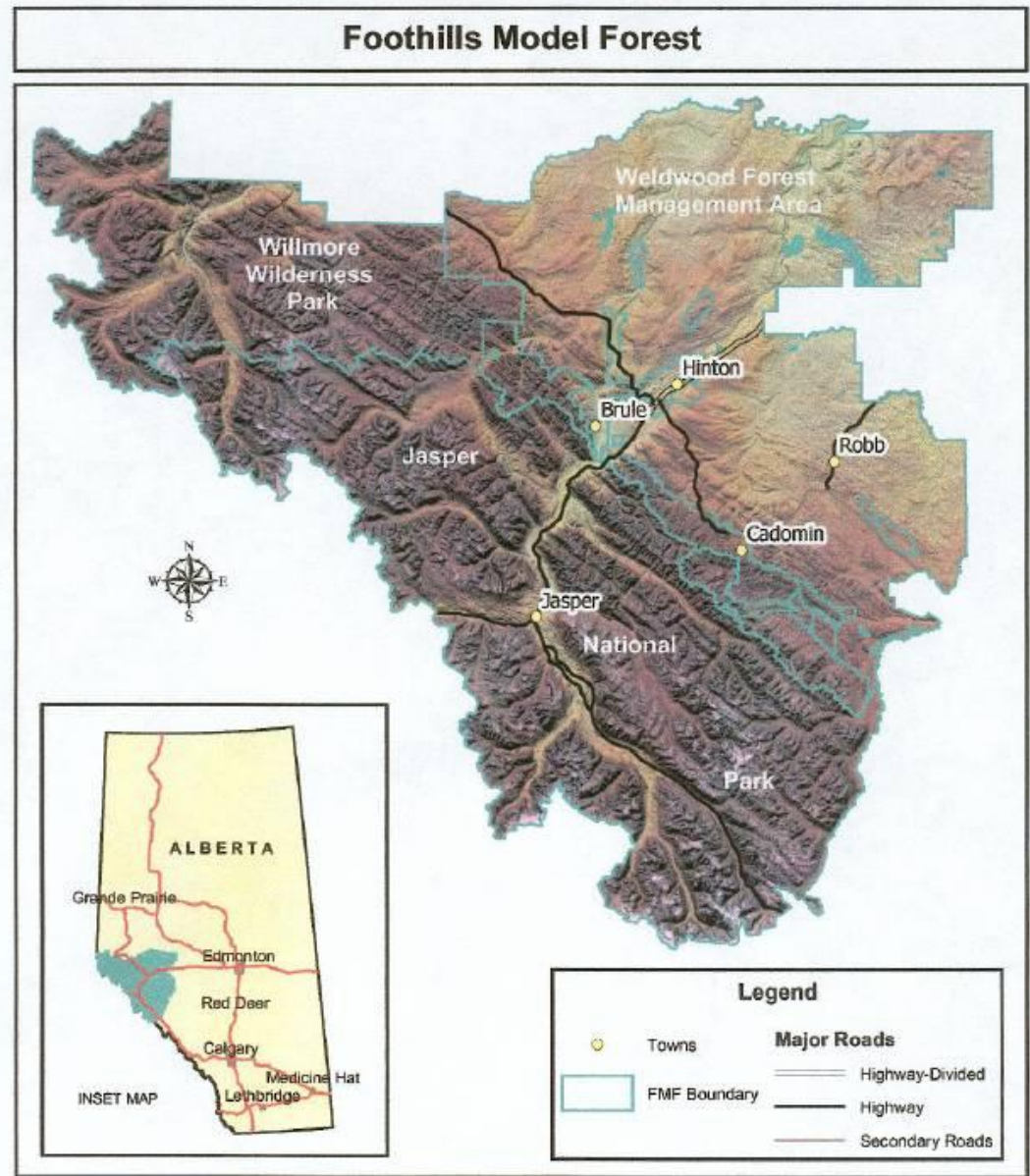
2.75 Million Ha

World Heritage National Park

Provincial Parks

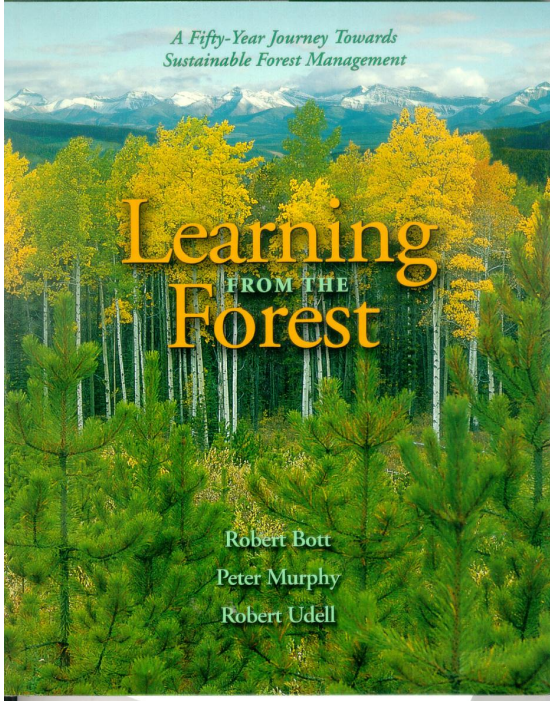
Crown Management Units

Historic Industrial Forest



# AFM Program 1996-2008

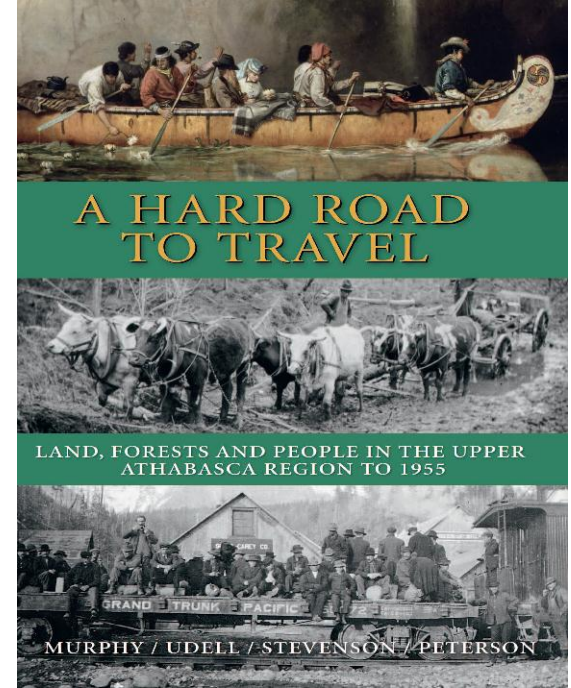
- Four Books
- Four Reports on MF Website
- Special Projects
  - Bridgland Study
  - Historic Trails Map
  - Culturing Wilderness
- DVD project
- Historical Database



2003

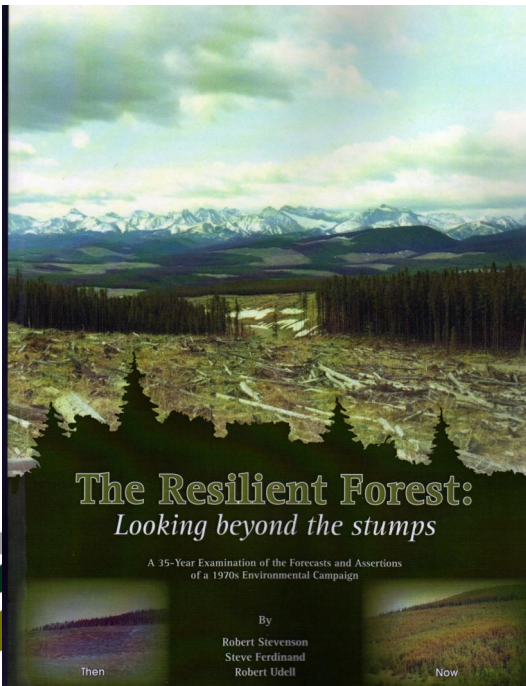
B  
O  
O  
K  
S

2007

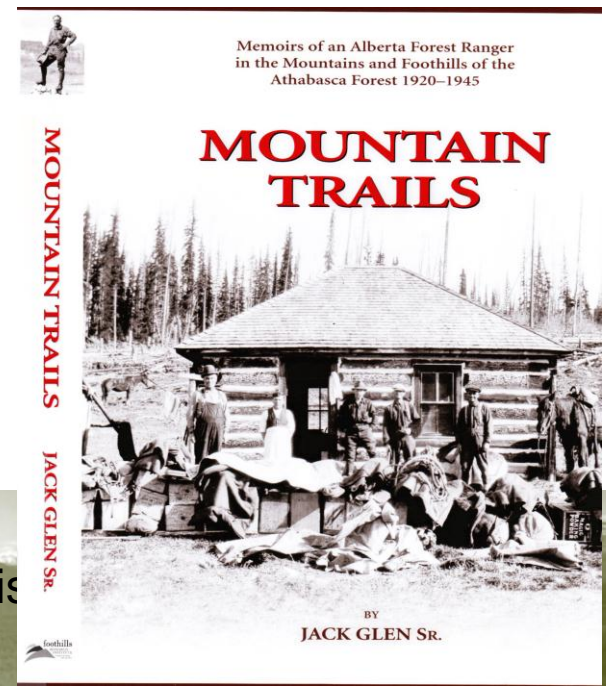


2007

2009



Adaptive Forest Management/ His



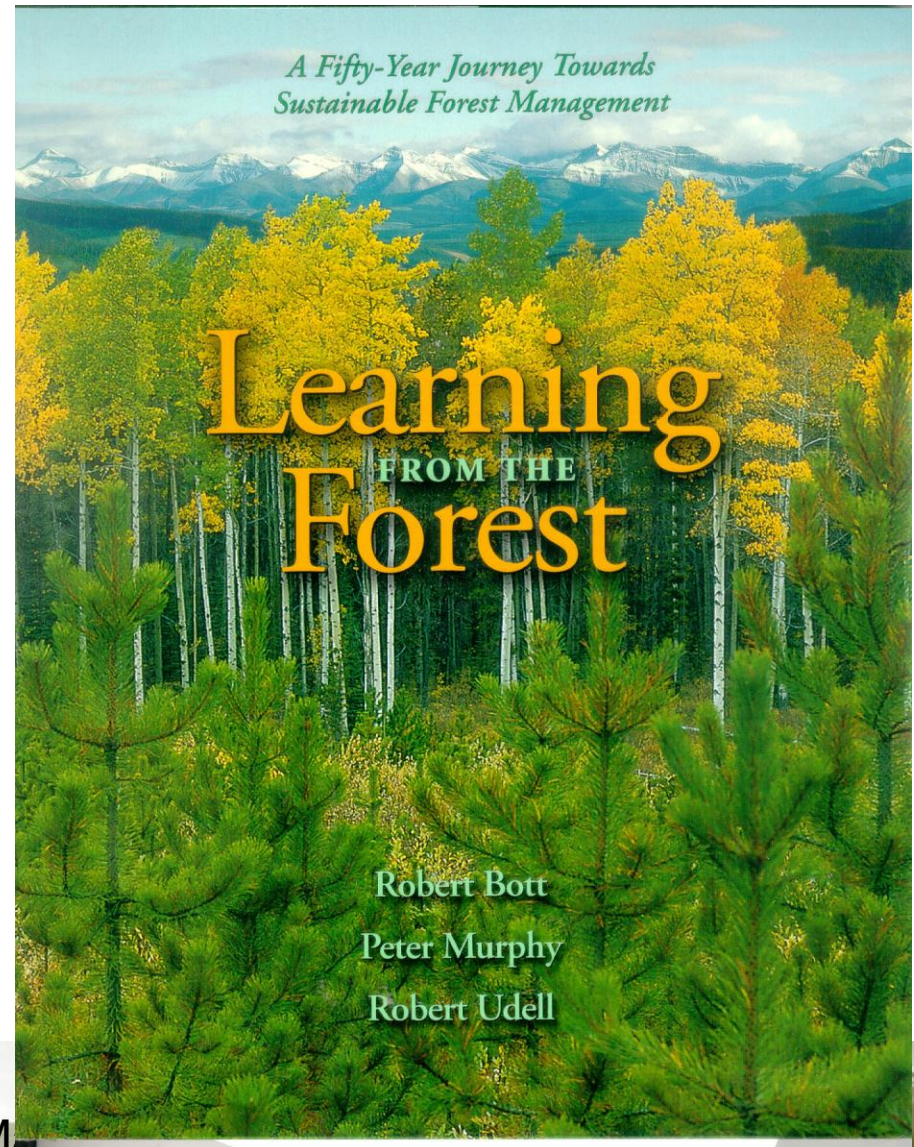
# Learning from the Forest

by Bob Bott, Peter Murphy,  
Bob Udell, 2003

The History of Forest  
Management at West Fraser's  
Hinton operation

“This is an important account  
..a first in Canada...”

Ken Armson, former  
Chief Forester of Ontario



# A Hard Road to Travel

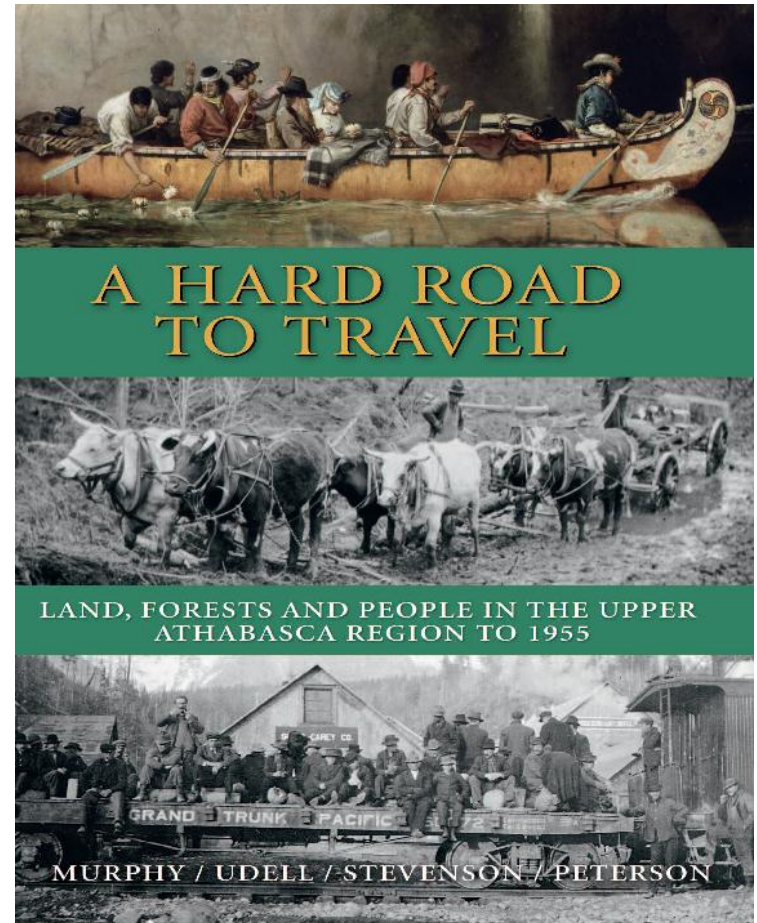
by Peter J. Murphy, Bob Udell  
Bob Stevenson, Tom Peterson  
2007

History of a region at the heart of  
Alberta and Canadian history

Joint publication with  
The Forest History Society, Durham N.C.

“..wonderful book...thoroughly researched..  
brilliantly presented...”

Edmonton Journal, Aug. 19, 2007



# John Moberly Homestead 1910



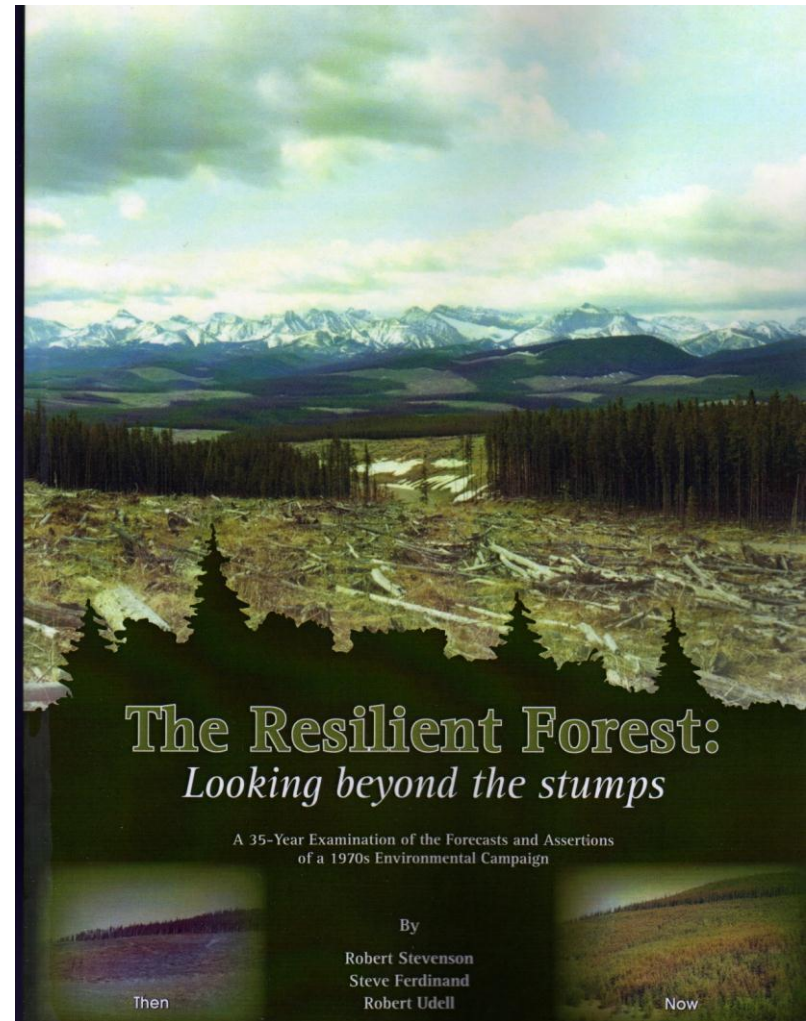
# The Resilient Forest

Bob Stevenson, Steve Ferdinand  
and Bob Udell, 2007

A 35-year Retrospective on a  
1970s Environmental Campaign

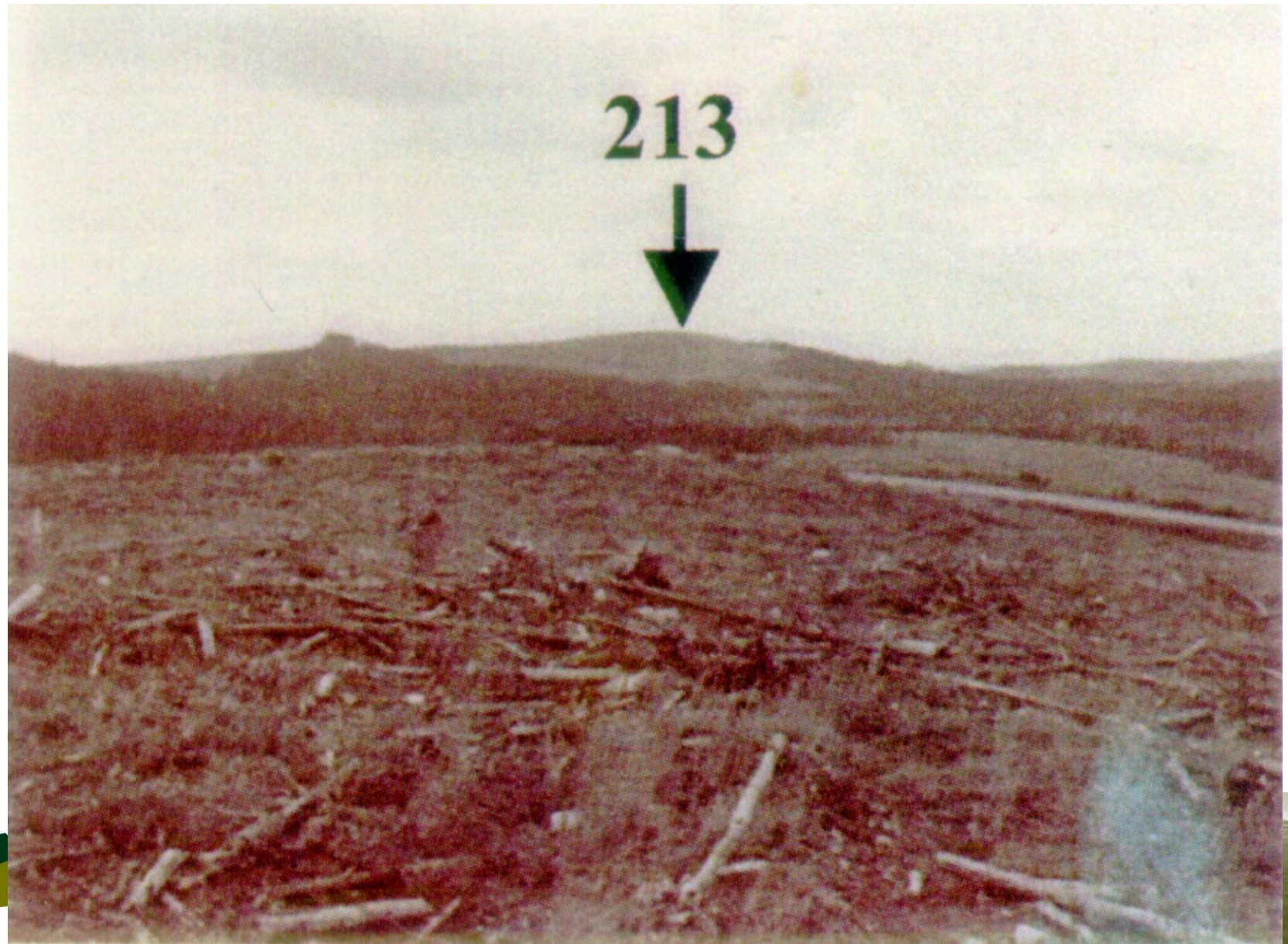
Controversial ENGO Campaign in 1972  
targeted destructive harvesting and  
reforestation practices at NWP&P

35 years later, authors examine the  
premises of the campaign and the  
outcome of the apocalyptic forecasts  
therein.

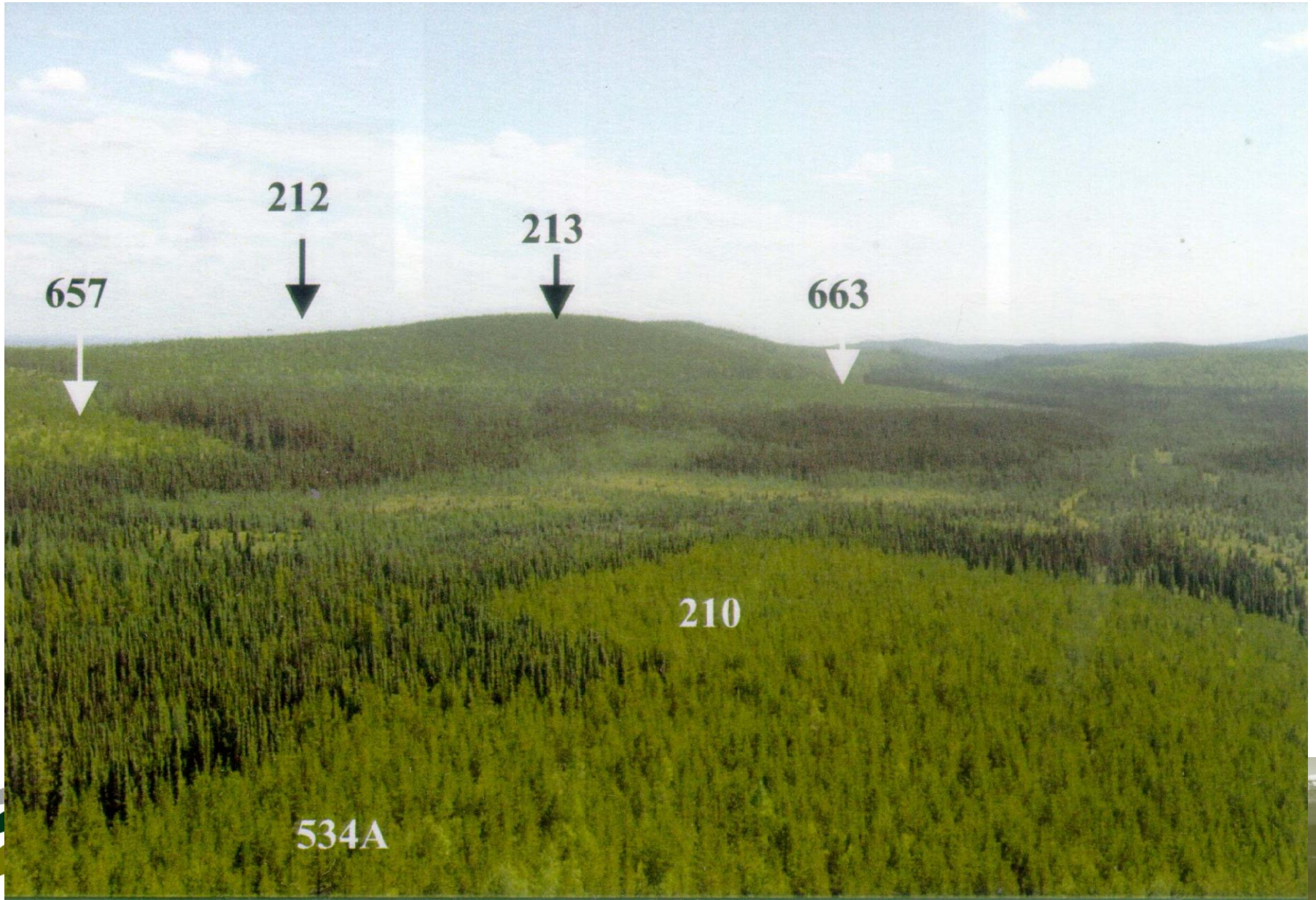




1971



# 2006



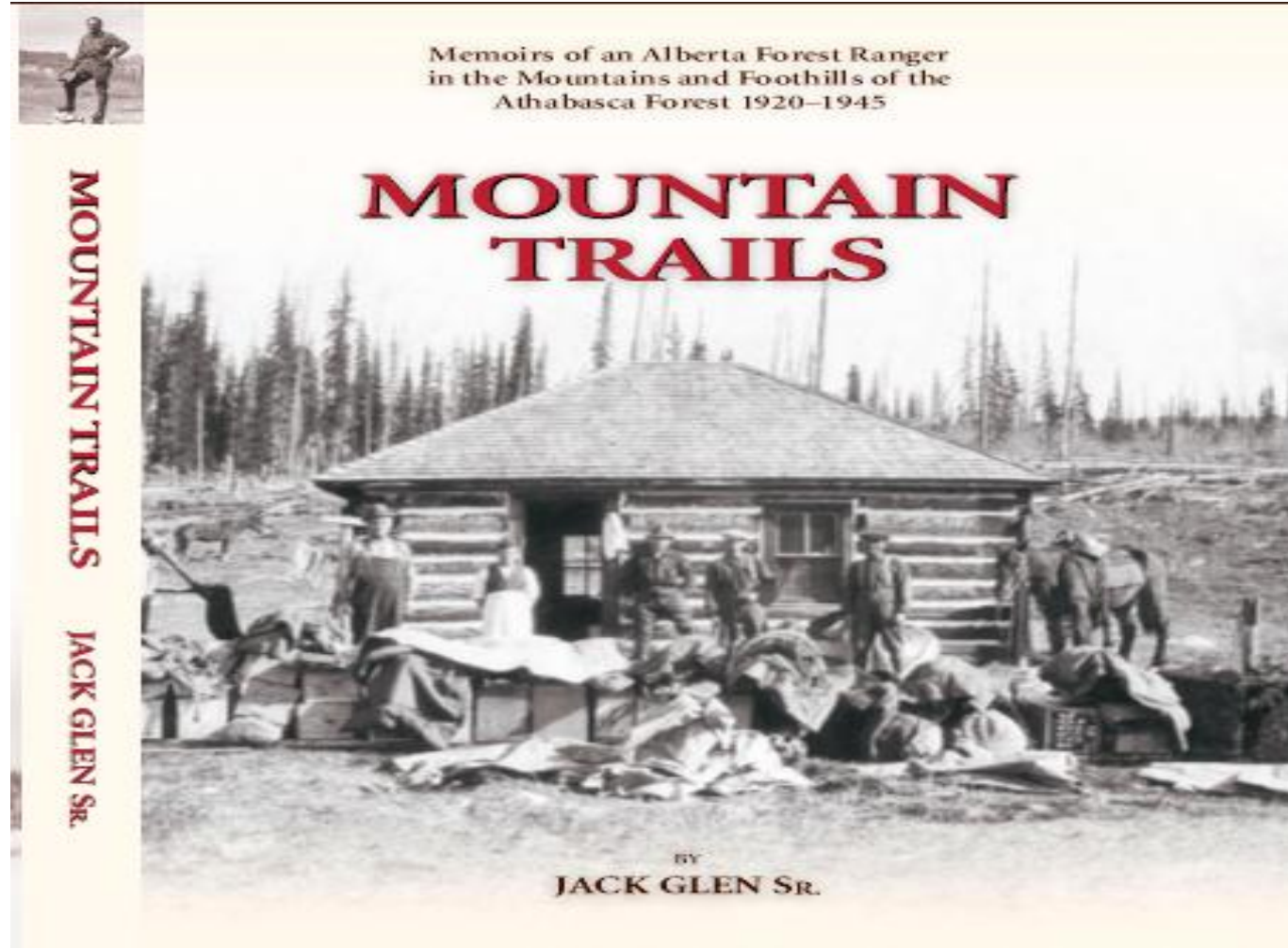
# Mountain Trails, 2008

Memoirs of a Forest  
Ranger at Entrance,  
Alberta  
1920-1945

On the ground view  
of early Forest  
Service history

Funding Partners

- Alberta SRD
- Forest History Ass'n  
of Alberta



# Jack Glen



# Jack Glen and Ted Hammer at Rock Lake



WOODLEY BROS.  
GENERAL MERCHANTS

POST OFFICE



# Forest Rangers at Entrance 1922



# Anne Burrows 1922 - 2007

- Concert pianist
- Music critic
- CBC broadcaster
- Kiwanis Music Festival
- Music for the Blind
- Order of Canada
- Alberta Centennial Arts Medal

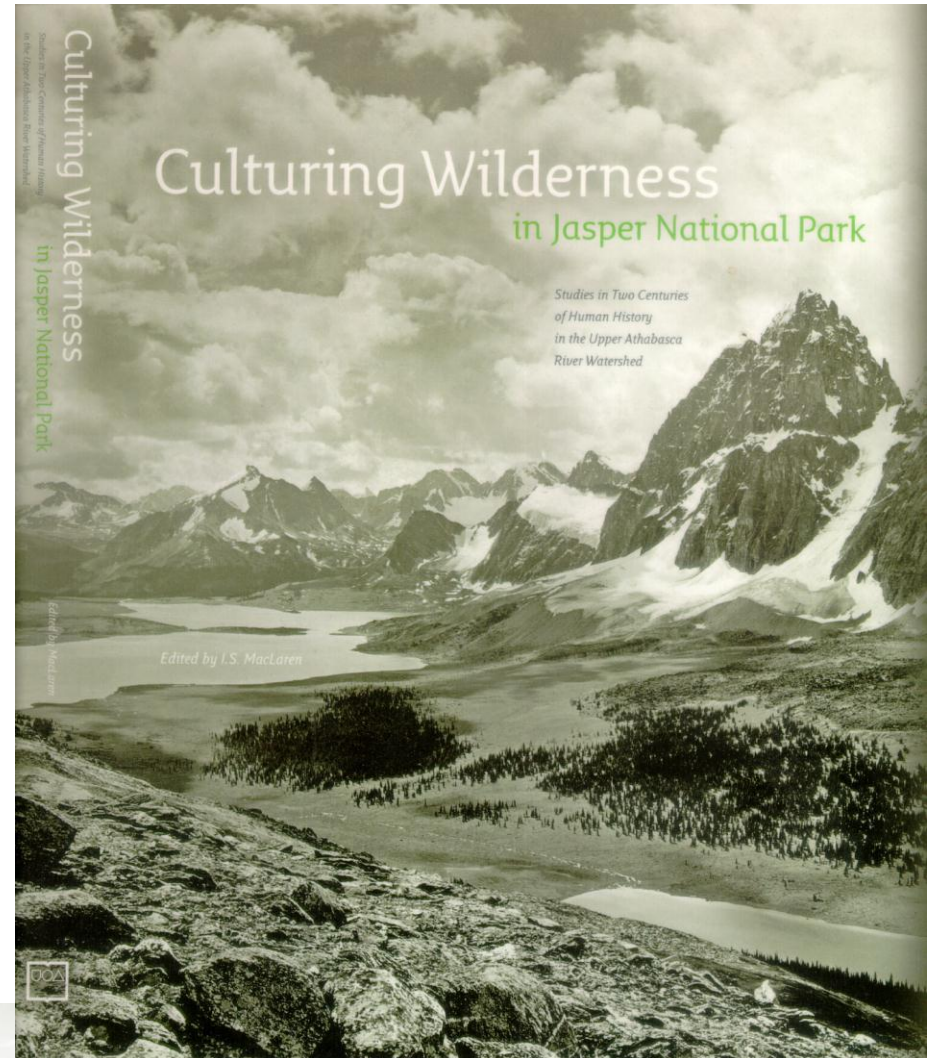
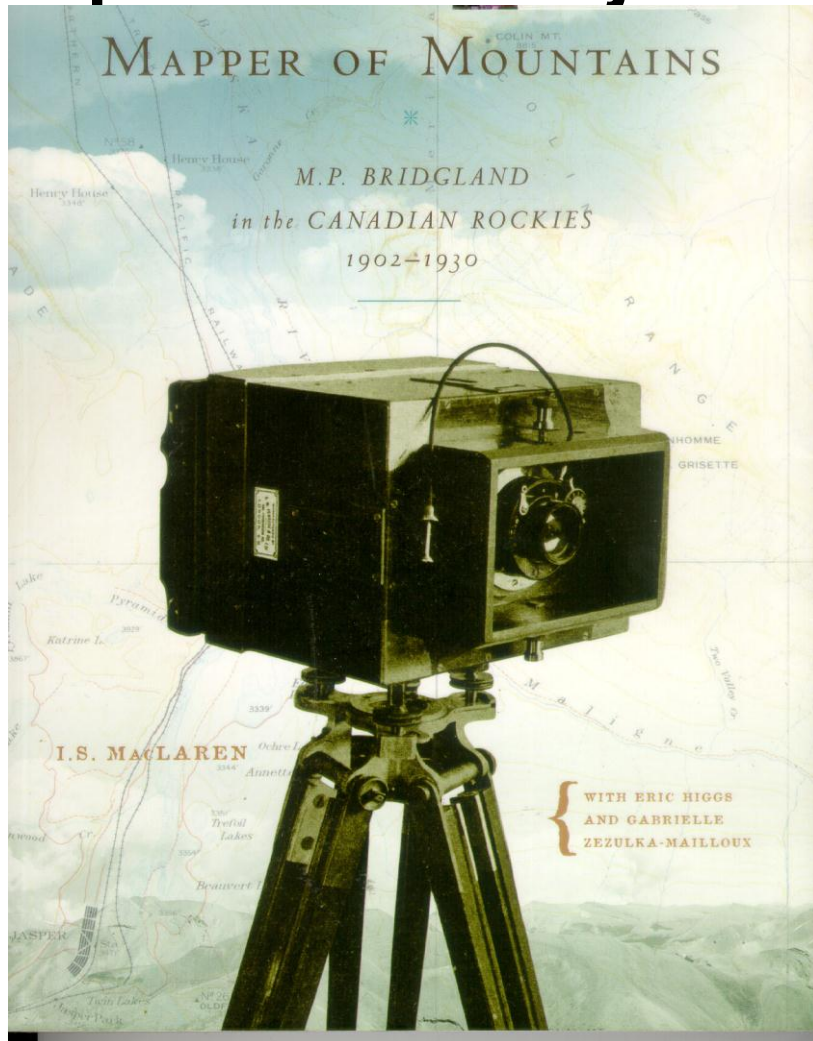




# Four Reports on Website:

- **50 Years of Harvest & Reforestation: A Historical Photo Review 2007**
- **The Evolution of Forest Management Agreements 2002**
- **The Hinton Forest 1955-2000, A Case Study 2002**
- **Adaptive Management in the Protected Areas 2000**

# Special Projects - contributions



# 2008-2009 Projects

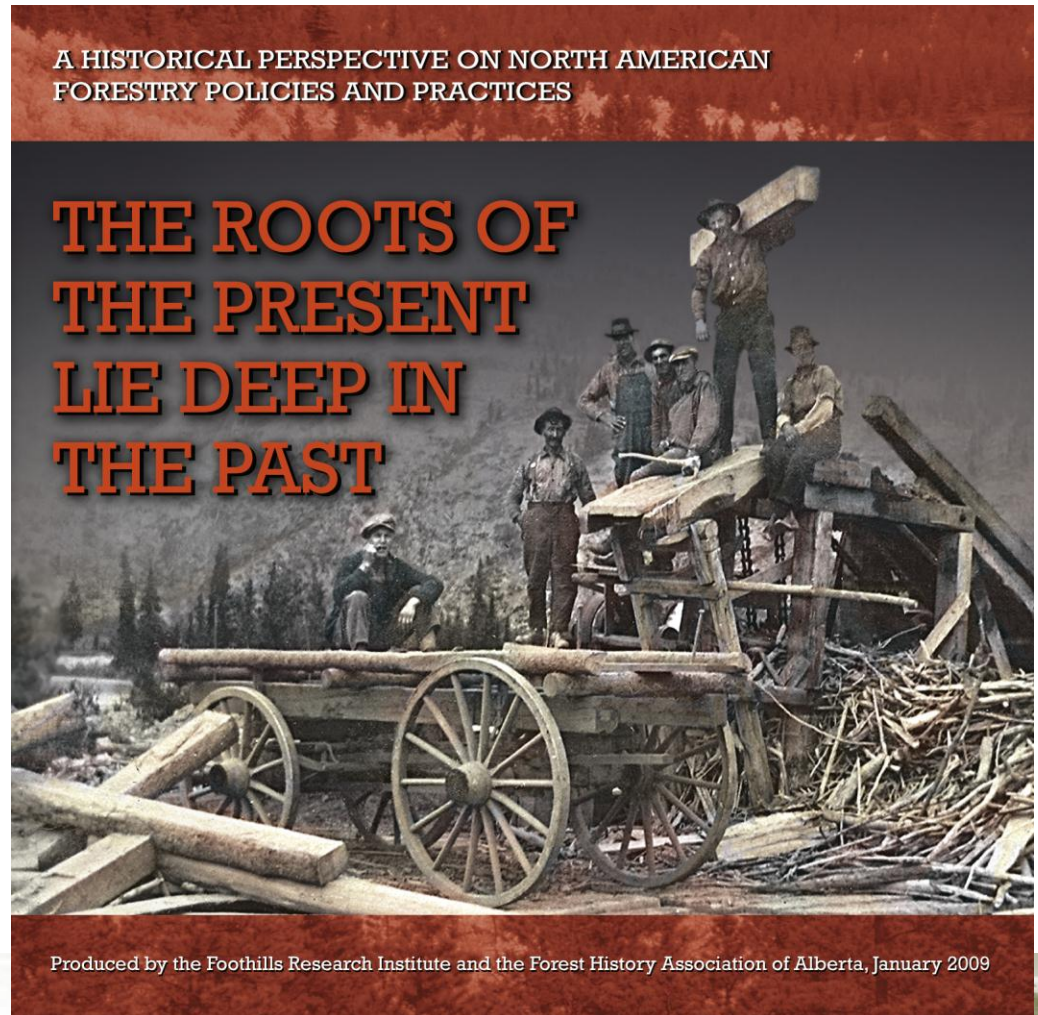
- Mountain Trails - Complete
- DVD – The Roots of the Present are Buried in the Past – Complete
- Historical Database - Designed
- Ecotour of FRI Landbase – Multiyear
- The Last Patrol – Harry Edgecombe – In process

# DVD – The Roots of the Present are Buried in the Past

2004 CIF/SAF Convention  
Plenary

Evolution of forestry,  
diverging tracks between  
Canada and USA.

“... the best plenary I’ve seen  
in decades...” Norm  
Brocard, former Woods Mgr.  
Simpson Timber



# Historical Database

Database Designed for:

- Interviews
- Photos
- Documents
- Audio/Visual
- Site Visits

The screenshot shows a web application window titled "Search Forest History Database...". It features a search interface with three input fields: "Title", "Comments", and "Type". A "Search" button is located to the right of the "Type" field, and a "Show All" button is below it. Below the search fields is a "Results" section containing a table with three columns: "Title", "Comments", and "Type". The table lists several entries, including "Adam Williams" (Archival: Interview), "Bread Oven" (Significant Site), "Desmond Crossley" (Archival: Interview), and multiple "Park Gate" entries (Archival: Photo). Below the table is a "Preview a Report:" section with three main categories: "Archives", "Site Visits", and "Artifacts". Each category has several sub-buttons: "Documents", "Interviews", "Facilities", "Trees", "Artifacts" under "Archives"; "Audio and Video", "Photos", "Site Visits" under "Site Visits"; and "Artifacts" under "Artifacts". At the bottom of the window, there is a "Record:" section with navigation icons and the text "1 of 20".

Title	Comments	Type
Adam Williams		Archival: Interview
Bread Oven	This site is within Jasper National Pa	Significant Site
Desmond Crossley		Archival: Interview
Park Gate		Significant Site
Park Gate		Archival: Photo
Park Gate		Archival: Photo
Park Gate		Archival: Photo
Park Gate		Archival: Photo
Park Gate		Archival: Photo
Park Gate		Archival: Photo
Park Gate		Archival: Photo
Park Gate		Archival: Photo
Park Gate		Archival: Photo
Park Gate		Archival: Photo

# Ecotour – 2008,2009



- Author – Fred Pollett
- Originated with CFS 1970s
- Builds on “Hard Road” legacy
- Driving Tour
- Funding Partners
  - Alberta Sustainable Resource Development
  - Community Initiatives Program

# Ecotour – Sample Pages

Home **CANADIAN Geographic** Available Tours About Trans Canada Ecotours Online Store To Canadian Geographic Our Partners

Sault Ste. Marie to Midland Trans Canada Ecotours Credits & Copyright

**Imagine, an autumn day in 1623, Wendat travellers in corn-laden birchbark canoes gliding up the St. Marys River. With them are their Ottawa (Ottawa) companions and two Frenchmen, Etienne Brûlé and Grenole. Tomorrow these traders from Georgian Bay will reach their destination, the rapids of Sault Ste. Marie where they will trade corn for the dried fish, meat and furs of the Ojibwa (Chippewa). The excited French explorers will be the first Europeans to reach the edge of the storied western sea, Lake Superior, for all it would be a special place.**

**Three hundred and seventy years pass**

On a clear Canadian winter's night in 1992, the spacecraft Discovery silently orbits the Earth. One of the astronauts marvels at the Earth below, searching for familiar patterns. There is Lake Superior, its shoreline winding eastward until it tips into Lake Huron. This modern-day explorer, Dr. Roberta Bondar, has located those same rapids at Sault Ste. Marie, her home. For her, too, this is a very special place on Earth.

The Ecotour, skirting the Lake Huron shore from Sault Ste. Marie to Midland, describes the historic rapids of the St. Marys River and many other places whose histories are prominent chapters in the story of Canada. The land was formed and sculpted over three billion years — by fiery magma, tropical seas and crushing glaciers — and then, in a instant of only 9,500 years, was inhabited and shaped by the Paleo-Indian. First Nations, Métis and European peoples. Before beginning the Ecotour, picture yourself looking down from the spacecraft Discovery and imagine the unfolding of those three billion years of change that is the legacy of the Lake Huron shoreline.

Imagine before you, in the ancient Archean eon, an alien planet covered by oceans. The first rocks are forming, with volcanoes and magma swarms spewing lava above and below water. Ontario—indeed North America—begins to take shape with the formation of rocks known as the "Superior Province," the first part of the Precambrian Shield. Newly formed continental plates are thin and move faster over the Earth's surface than the continents of today. When these continental plates butt together, large balls of magma rise from the earth's core and then cool, forming the giant granite batholiths that become the trademark rocks of northern Ontario. There is no vegetation, the air is unbreathable and there is no ozone layer. Only tiny algae and bacteria exist in the seas.

Then, about 2.5 billion years ago, the second part of the Shield, the "Southern Province," begins to form. This part of the Shield is crossed by the Trans-Canada Highway and the Ecotour, linking Sault Ste. Marie with Sudbury. The formation of the Southern Province begins with erosion of the Superior Province rocks, followed by a tectonic-plate collision that creates the Penokean Mountains north of Lake Huron. Remnants of the Penokean Mountains include the white La Cloche Mountains—a favoured subject area for Group of Seven artists. Finally, in the Southern Province, another Earth-shattering event occurs 1.1 billion years ago: North America tries to split into two parts, forming the Midcontinental Rift. The rift gradually fills with sediments and lava that reshape the land once again.

The third and youngest province of the Shield, the "Grenville Province," is crossed by the Trans-Canada Highway, from just south of Sudbury to the Shield's southern boundary near Port Severn. The Grenville Province is formed when several pieces of volcanic land are swept into collision with the two existing provinces. The Grenville rocks are baked, squeezed, stretched and twisted into metamorphic formations.

With the completion of the three provinces 1.75 to 1.0 billion years ago, the great Precambrian Shield takes shape. As time passes a new ring of rocks forms the Michigan Basin, just south of the Shield. These rocks are the youngest on the Ecotour route—570 to 360 million years old—deposited as sediments in seas much like the Caribbean of today. Oxygen is plentiful and

**CANADIAN Geographic** TRANS CANADA ECOTOURS®

Ontario II  
**Sault Ste. Marie to Midland**  
HIGHWAY GUIDE

Leading the way from Sault Ste. Marie to Midland, this Ecotour unveils the fascinating natural and cultural history of Ontario's Huron Coast. Whether walking the meek Trail in the Sault, learning about Algonquian heritage on Manitoulin, or viewing a beaver in Science North or swimming in the wake of the Group of Seven along the white hills of Killarney, you'll over that the Sault Ste. Marie to Midland Ecotour is the guide to follow.

Trans Canada Ecotours are the ultimate travel companion. An easy to use guidebook with detailed, up to date information, it is ideal for the discerning traveler or those who just want to see it all. Broken down by Ecopoints, it'll find suggestions on what to see and do, from captivating museums and spectacular parks to best bets for finding breathtaking scenery and wildlife spotting. Rich photography and historical context will guide you along your journey. And, whether you are looking for famous sites or want to explore off the beaten path, planning is made easy with detailed maps and distances between points, ensuring you won't miss a thing.

Traveling with Trans Canada Ecotours is travel made easy — let it help you use your compass for adventure and discovery.

Printed in Canada

# The Last Patrol 1982

Harry Edgecombe  
AFS 1947 -- Last  
Patrol on the Willmore

After retirement from  
HTC, Edgecombe  
returned to his AFS  
roots on patrol in  
Willmore, 1982



Harry Edgecombe, 1947



Harry Edgecombe, 1982



**“Let It Be”**



# 2009 Projects

- Ecotour
- A History of Silviculture at Hinton 1955-2005
- Logging History – the Whirlpool River



# Tie Logging on the Whirlpool – 1920s

Whirlpool River Tie Logging Camps

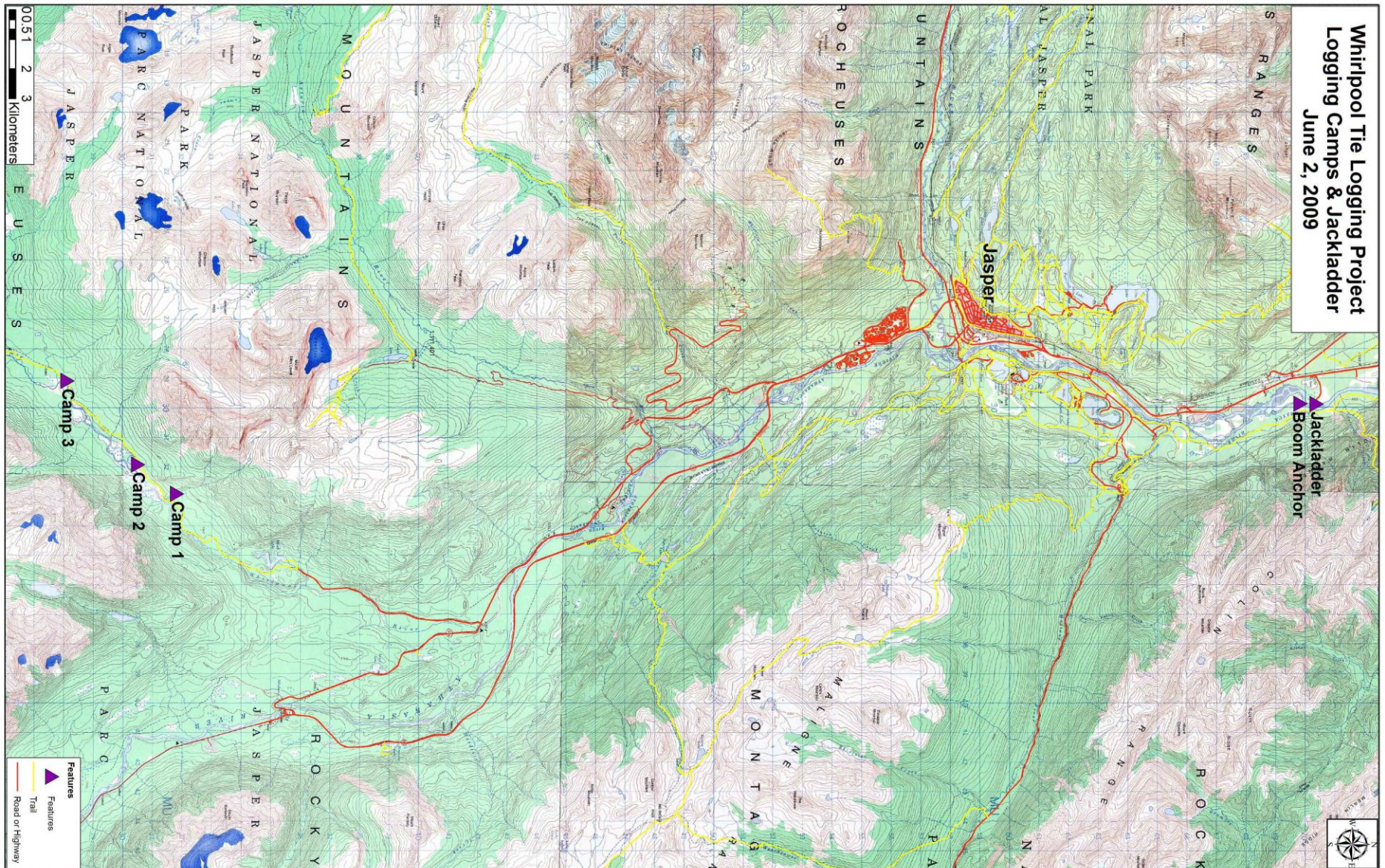
1919 - 1926



pjm 2009-05-14

# 55 km Camp 3 to Jackladder

Whirlpool Tie Logging Project  
Logging Camps & Jackladder  
June 2, 2009



# Jackladder – Henry House Flats



# Jackladder & Log Boom

## Henry House Flats















**Jackladder and Boom Island Area -- Comparison**

**1951 River Location in Red**

**Terasen/Parks Canada Ortho Photo Sheet 18 2006**

**Lowell Lyseng interpreter -- Peter Murphy Compiler**

**2009-03-27**

# Milton & Cheadle 1863



# Future Projects

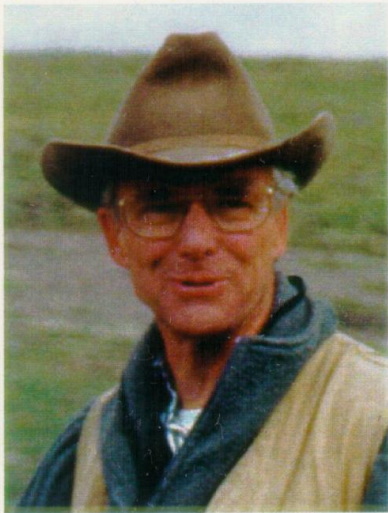
- GPS tour – FRI Landbase
- Harry Edgcombe Project
- A 20-year History of Foothills Research Institute 1992-2012



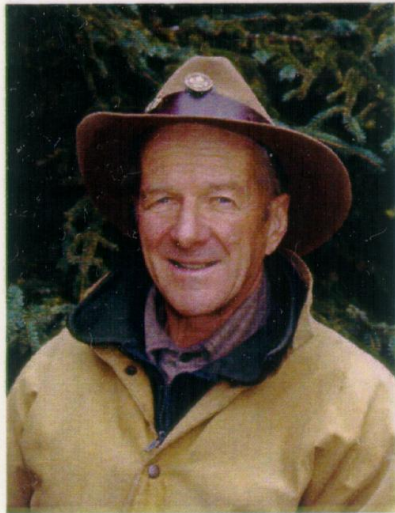
# Conclusion.....

## The Adaptive Forest Management/ History Program 1996-2009+

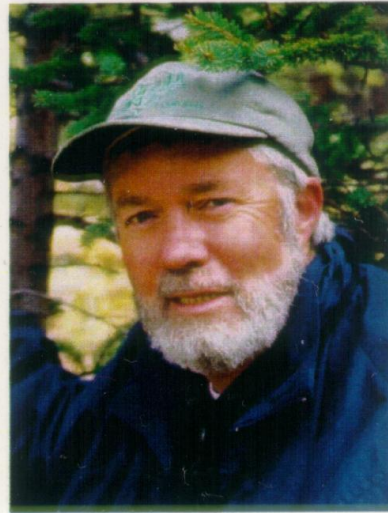
“By Understanding our Past We Shape Our Future”



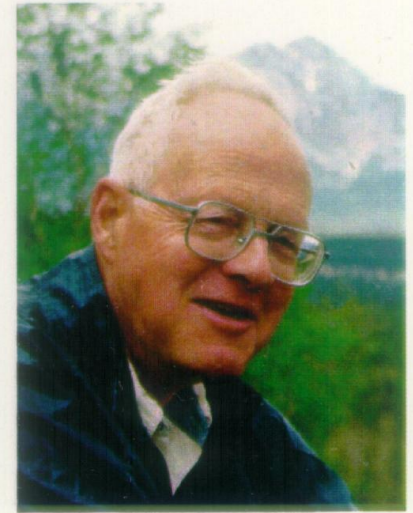
Peter Murphy



Bob Stevenson



Robert Udell



Tom Peterson

# Thanks to Bob Udell



# A Partnership That Produces Results!



Adaptive Forest Management/ History

