

Adaptive Forest Management/History Keystone Projects 2010

**Bob Udell and Peter Murphy
Foothills Research Institute
AGM**

June 2, 2010

The Northern Rockies EcoTour Project 2008-2011

- Funding Partners
 - Alberta Sustainable Resource Development
 - Community Initiatives Program
- In Kind Partners
 - F.C. Pollett Inc.
 - Peter Murphy
 - Tom Peterson

Ontario II

Sault Ste. Marie to Midland

Leading the way from Sault Ste. Marie to Midland, this Ecotour unveils the fascinating natural and cultural history of Ontario's Huron Coast. Whether walking the Attikamek Trail in the Sault, learning about the Algonquian heritage on Manitoulin, touching a beaver in Science North or following in the wake of the Group of Seven through the white hills of Killarney, you'll discover that the Sault Ste. Marie to Midland Ecotour is the guide to follow.



MARK BURKHARDT/STUDIO CITY

Trans Canada Ecotours are the ultimate travel companion. An easy to use guidebook with detailed, up to date information, it is ideal for the discerning traveller or those who just want to see it all. Broken down by Ecopoints, you'll find suggestions on what to see and do, from captivating museums and spectacular views to best bets for finding breathtaking scenery and wildlife spotting. Rich photographs and detailed maps are an ideal companion along your journey. And whether you're looking for amazing sites to want to explore off the beaten path, planning a hike or canoe with detailed maps and distances between points, ensuring you won't miss a thing.

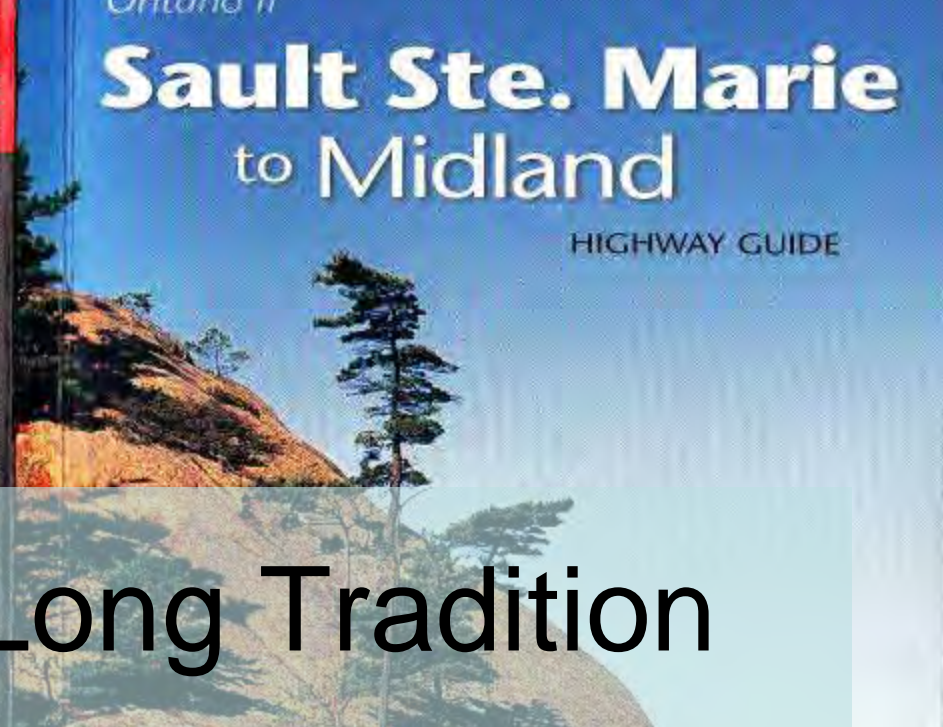
Travelling with Trans Canada Ecotours is travel made easy – let it help you set your compass for adventure and discovery.



Ontario II

Sault Ste. Marie to Midland

HIGHWAY GUIDE



CANADIAN GEOGRAPHIC

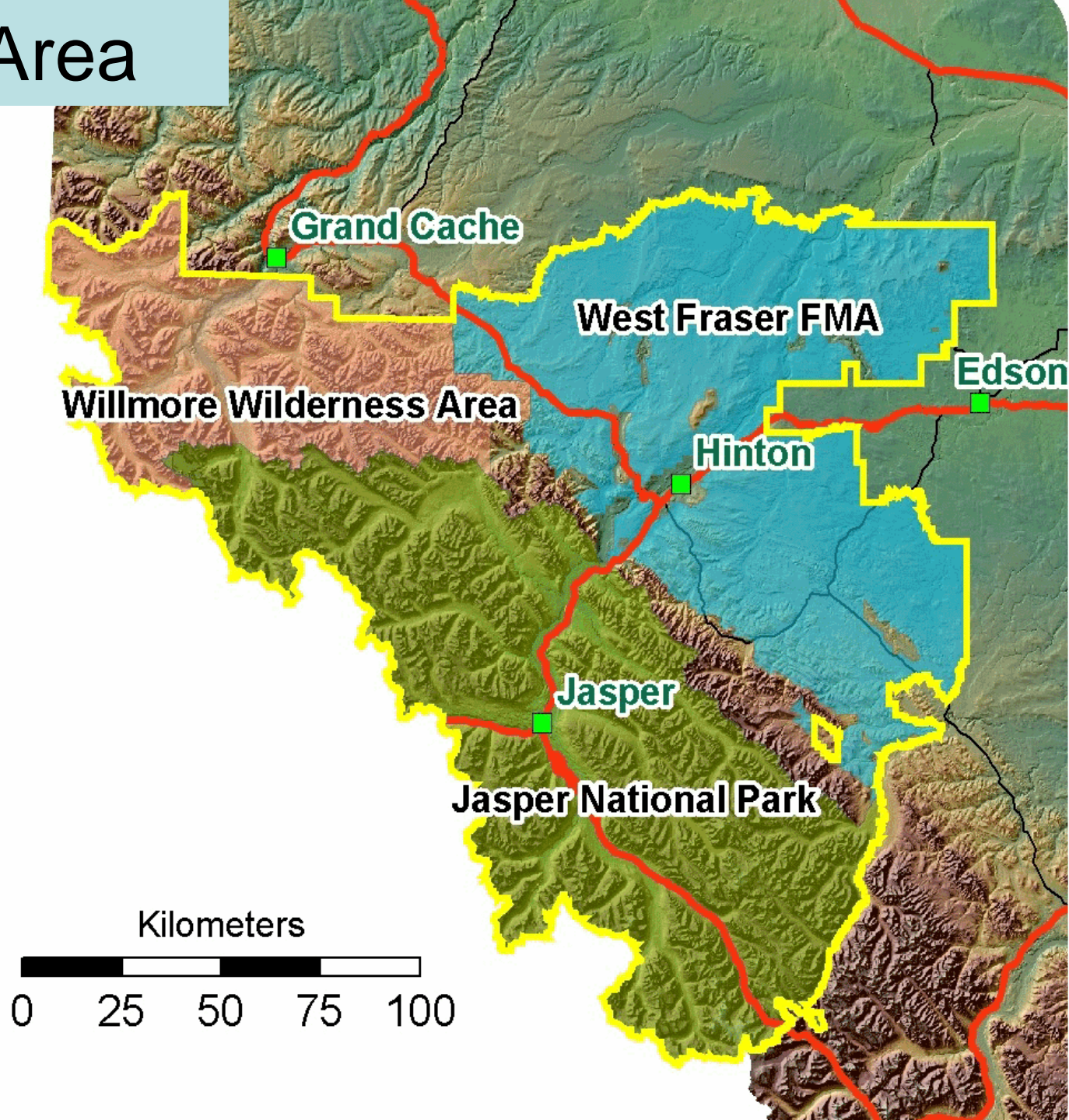
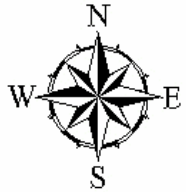
TRANS CANADA ECOTOURS - ONTARIO II SAULT STE. MARIE TO MIDLAND

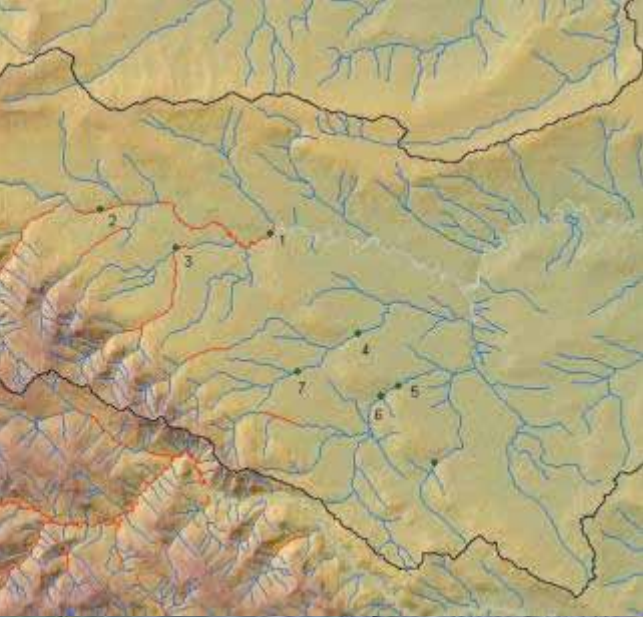
HIGHWAY GUIDE



Ecotours – A Long Tradition

Core Study Area





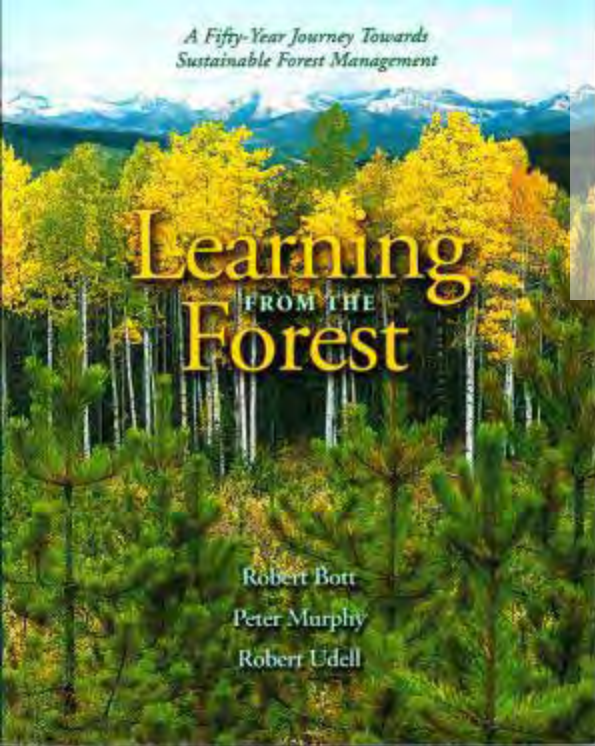
Why This EcoTour?



**Showcases
FRI
Research
Program**

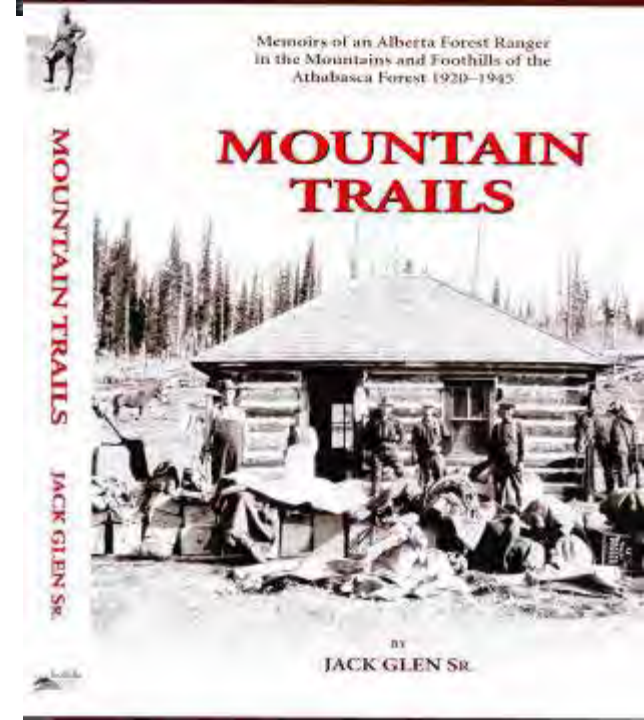
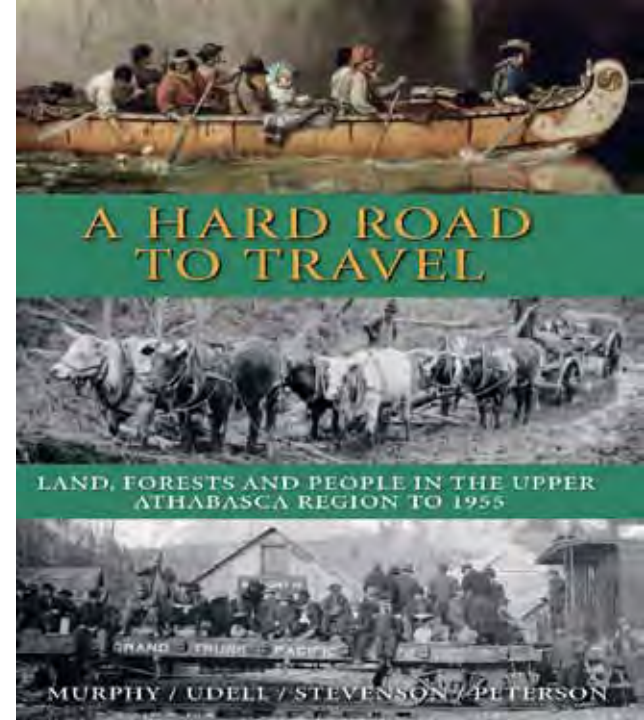
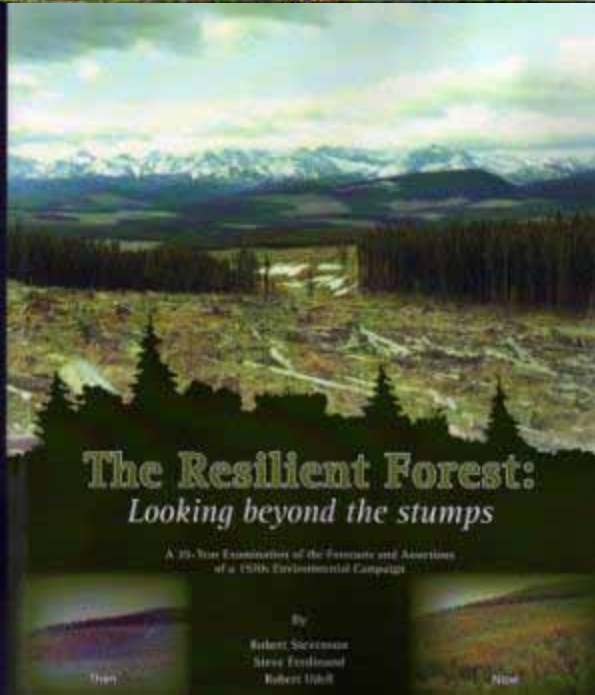


Adaptive Forest Management/ History



Why This EcoTour?

14 Years of Information
Gathering
1996-2010
Adaptive Forest
Management/ History
Program



Why This EcoTour?

An aerial photograph showing a vast, dense forest of green trees. In the background, there are rolling hills and mountains under a clear sky. A paved road runs along the right side of the forest, with a few vehicles visible. The overall scene is a lush, natural landscape.

An Area with a Legacy of Stewardship
– Forestry

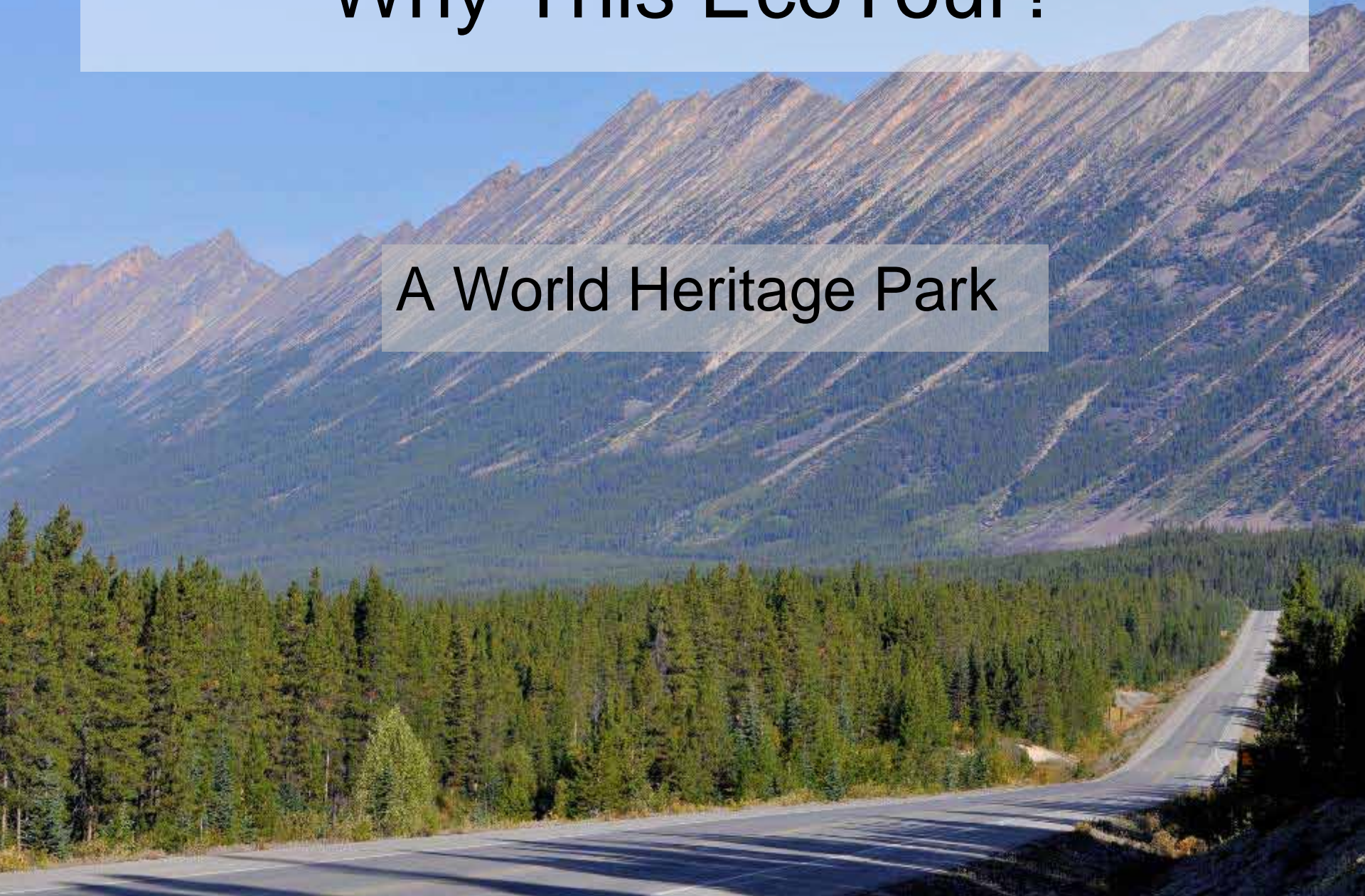
Why This EcoTour?

An Area with a Legacy
of Stewardship
– Mining



Why This EcoTour?

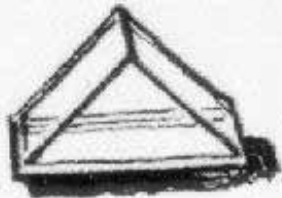
A World Heritage Park



Why This EcoTour?

- An Area Rich in Historical Resources

David Thompson BiCentennial
1811-2011



Why This EcoTour?



A Recreational Paradise

Why This EcoTour?

World Class Wildlife Viewing

Why This EcoTour?



An Area Rich in Native Culture

Ecotour Highlights - Hinton

A scenic view of a forested area with a wooden boardwalk and a large beaver dam in the foreground. The boardwalk is elevated on stilts and has a green roof. The beaver dam is made of a large pile of sticks and branches. The background is a dense forest of evergreen trees.

Beaver Boardwalk
Trails and Bike Park
Hinton Training Centre – Museum, Fire Training
Foothills Research Institute
Natural Resources Interpretive Park

Ecotour Highlights – Hwy 40 S

Harvest and Reforestation

Mining and Reclamation - Wildlife

FRI Research – Grizzly Bears, Watershed

Biodiversity – Cadomin Cave Bats

Ecologically Significant Areas – Cardinal Divide

Coal Branch History

Ecotour Highlights – Hwy 40 N

History and Culture

- Shand Harvey,
- The Iroquois Story

Switzer Park

FRI Research and Application

- Healthy Landscapes

Switzer and Willmore Parks

The Caribou Issue

Town of Grande Cache

You are in CARIBOU COUNTRY

Help protect Alberta's caribou

You are about to drive a 7.1 kilometre section of Highway 40 that crosses between the Muskoka and Forested zones and is known as the Caribou Corridor.

From October to December, caribou stay along the road during their migration from the mountain area to their wintering range of the highway. This period is when you need to be particularly alert.

The road level in mountain and drifting conditions is extremely attractive to caribou and motorists over those that drive. Vehicles hit caribou when they come to lick the road salt along the corridor.

You might lose a caribou's life and most motorists will.

Report caribou collisions to call 1-800-668-6868 or 1-800-468-6868.

Caribou Information Centre

Number of animals: _____

Time of day: _____

Species of your observation: _____

PLEASE SLOW DOWN WHEN YOU DRIVE THROUGH THE CARIBOU CORRIDOR.

Caribou are large (two feet tall) and smaller than elk, bison and wild horses grow antlers. Caribou are rich dark brown with long black, white, grey and tan and naturally white on the neck.

Wildlife Identification

The signposts above below can all be seen along the road and may also be observed in wildlife conditions. Before you report your sightings, make sure you identify the animals correctly.

Types of caribou

There are two types of woodland caribou in Alberta: the mountain and the boreal. The differences are based primarily on behaviour and habitat.

Mountain caribou migrate between their wintering ranges in the alpine and subalpine to those of the mountain to low winter ranges in the foothills.

The A.L.A. factor caribou have clusters of mountain caribou that migrate between the Highway 40 area and the mountain to low winter ranges.

Boreal caribou migrate extensively in seasonal habitat in all times of the year.

The Little Smoky herd (subset of boreal caribou) winter in the area seasonal mountains. Their winter and summer ranges overlap.

Geography

Woodstock
Prairie
Country

A.L.A. Factor

Lower Range Woodland Caribou Range
Mountain to Low Winter Ranges (Subalpine to Alpine)

The woodland caribou - a threatened species

The woodland caribou once ranged from Newfoundland in British Columbia. They are now designated a threatened species in Alberta.

There is no single explanation for why caribou numbers are decreasing. Climate change, predation and fragmentation caused by industry all contribute to fewer large patches of habitat and the reduction of caribou populations. Since 1980, there has been a 60% hunting of woodland caribou in Alberta.

TALISMAN ENERGY

Alberta

Ecotour Highlights – Jasper NP

History

- Jasper House – Fur Trade
- Aboriginal Settlement/ Expulsion
- Mining and Forestry

Town of Jasper

FRI Research and Application

- Jasper Firesmart/Forestwise Program

Geology of the Rockies

Ecology – Species at Risk

Ecotour Highlights –Hwy 16 West

Railways and Transportation

Geology

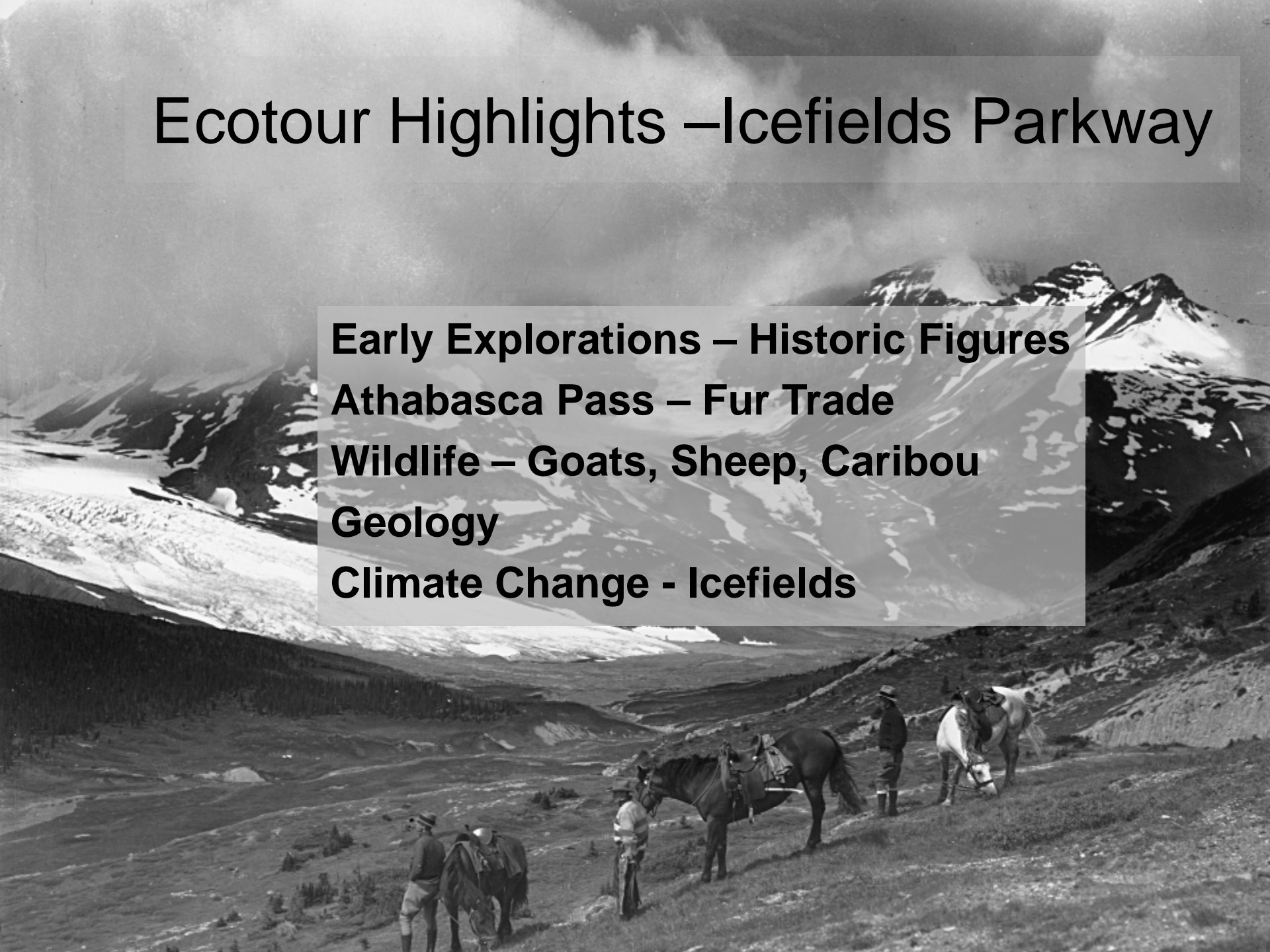
History

Forest Pathology

- Mountain Pine Beetle
- Dwarf Mistletoe

Ecotour Highlights –Icefields Parkway

Early Explorations – Historic Figures
Athabasca Pass – Fur Trade
Wildlife – Goats, Sheep, Caribou
Geology
Climate Change - Icefields





Stay Tuned for the Next
Phase.....



Bob Udell
Project Lead

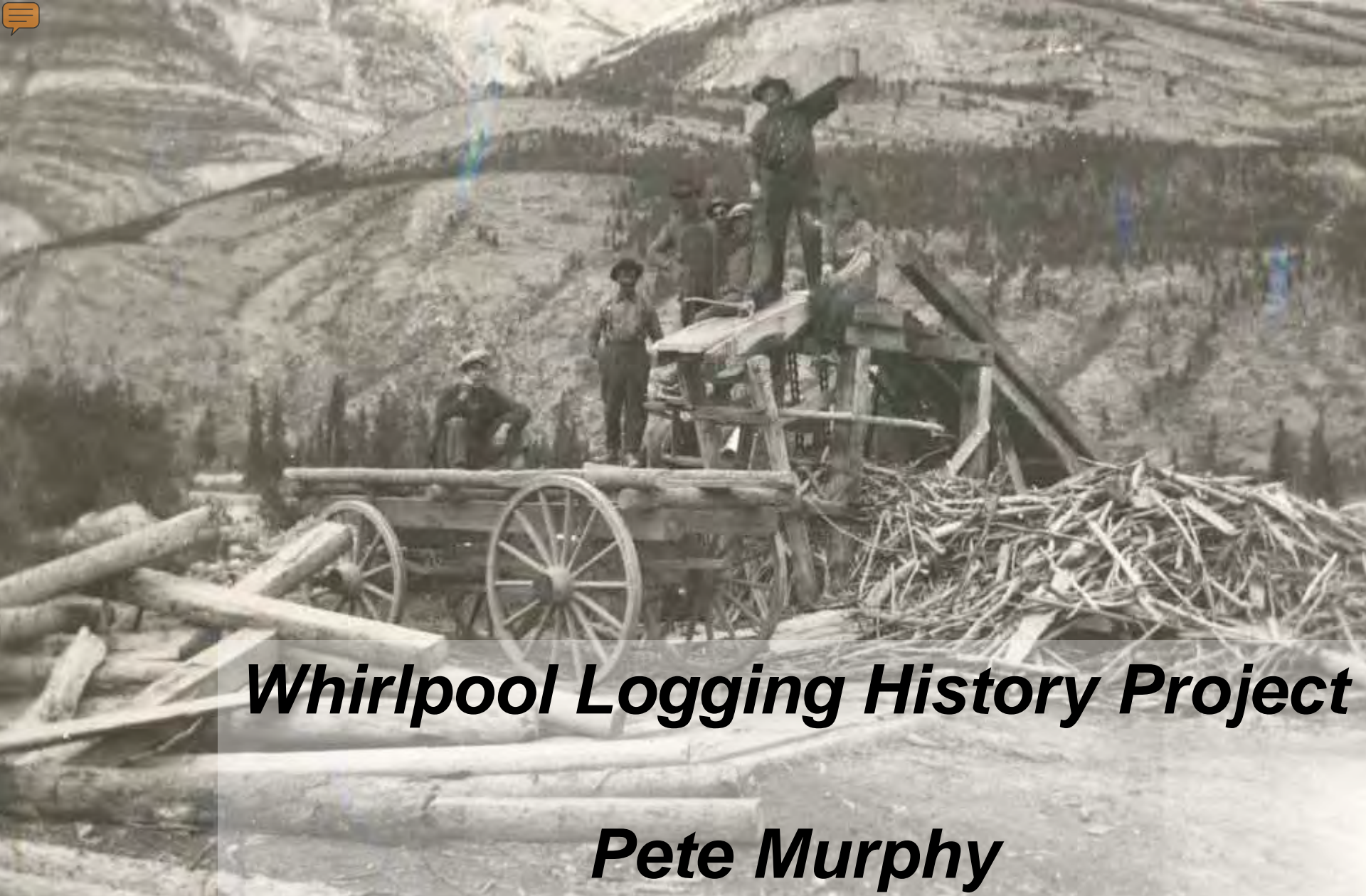


Tom Peterson Fred Pollett Pete Murphy



PROJECT TEAM





Whirlpool Logging History Project

Pete Murphy



Adaptive Forest Management/ History

The Jackladder: Tie Logging on the Whirlpool



Whirlpool River Tie Logging Area

1919 - 1927

Whirlpool Valley

Marmot Basin

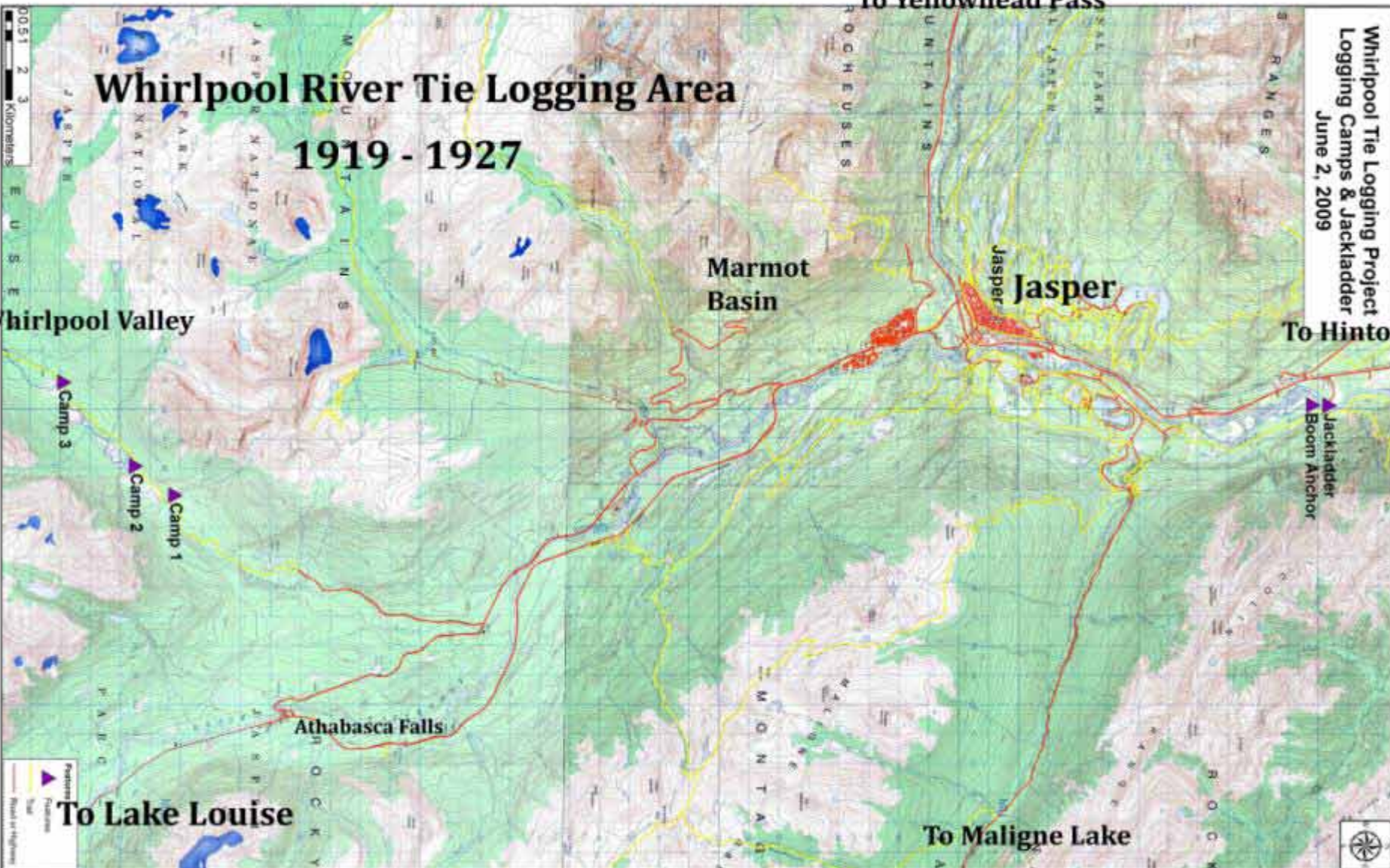
Jasper

To Hinton

To Lake Louise

To Maligne Lake

Athabasca Falls

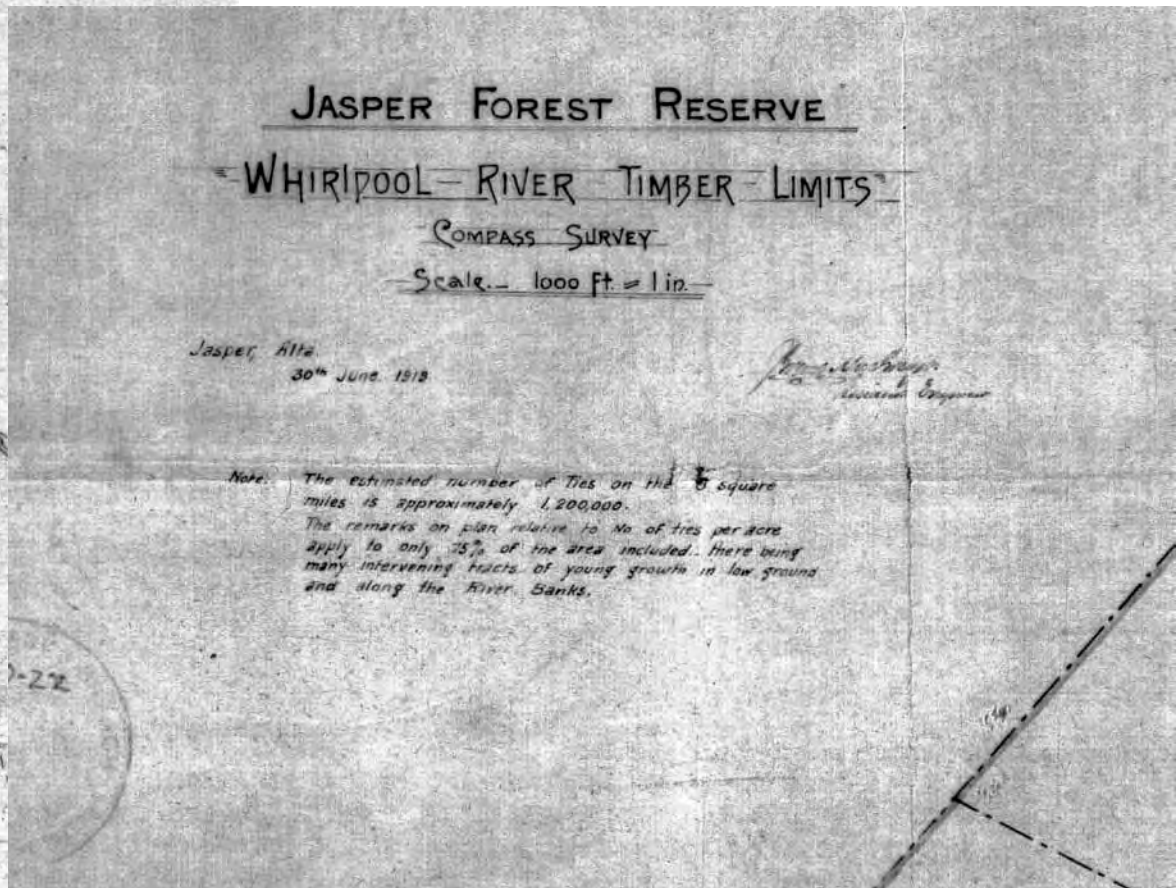
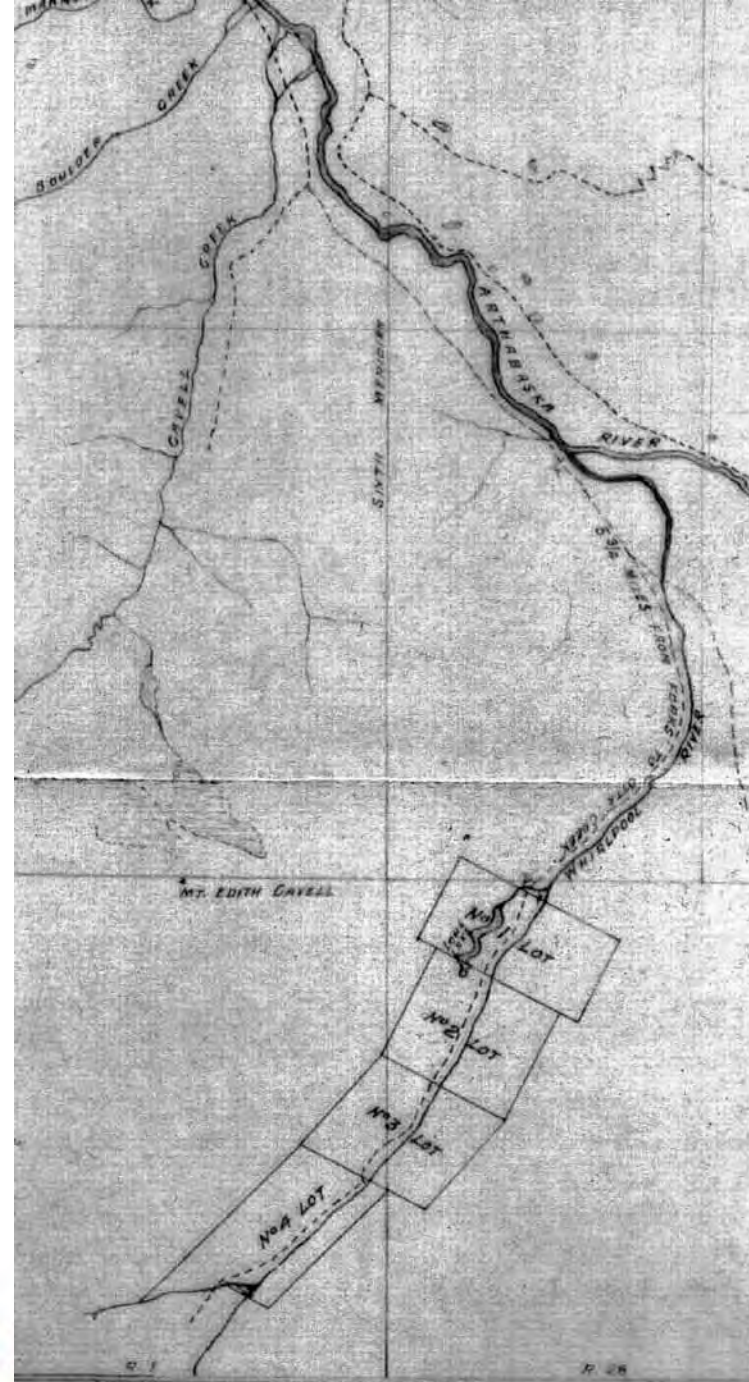


Warden John James 1918

“Sealed Lugar Pistol -- property of Mr. A.P. Bauland,

Enroute to Forks of **Whirlpool River**
Timber Business along with Donald
MacLeod Lacombe.”

(June 1st 1918)



1919 Timber Berth Survey June 30, 1919

Management/ History

J. Grant MacGregor

Guelph-Goderich RR to 1909

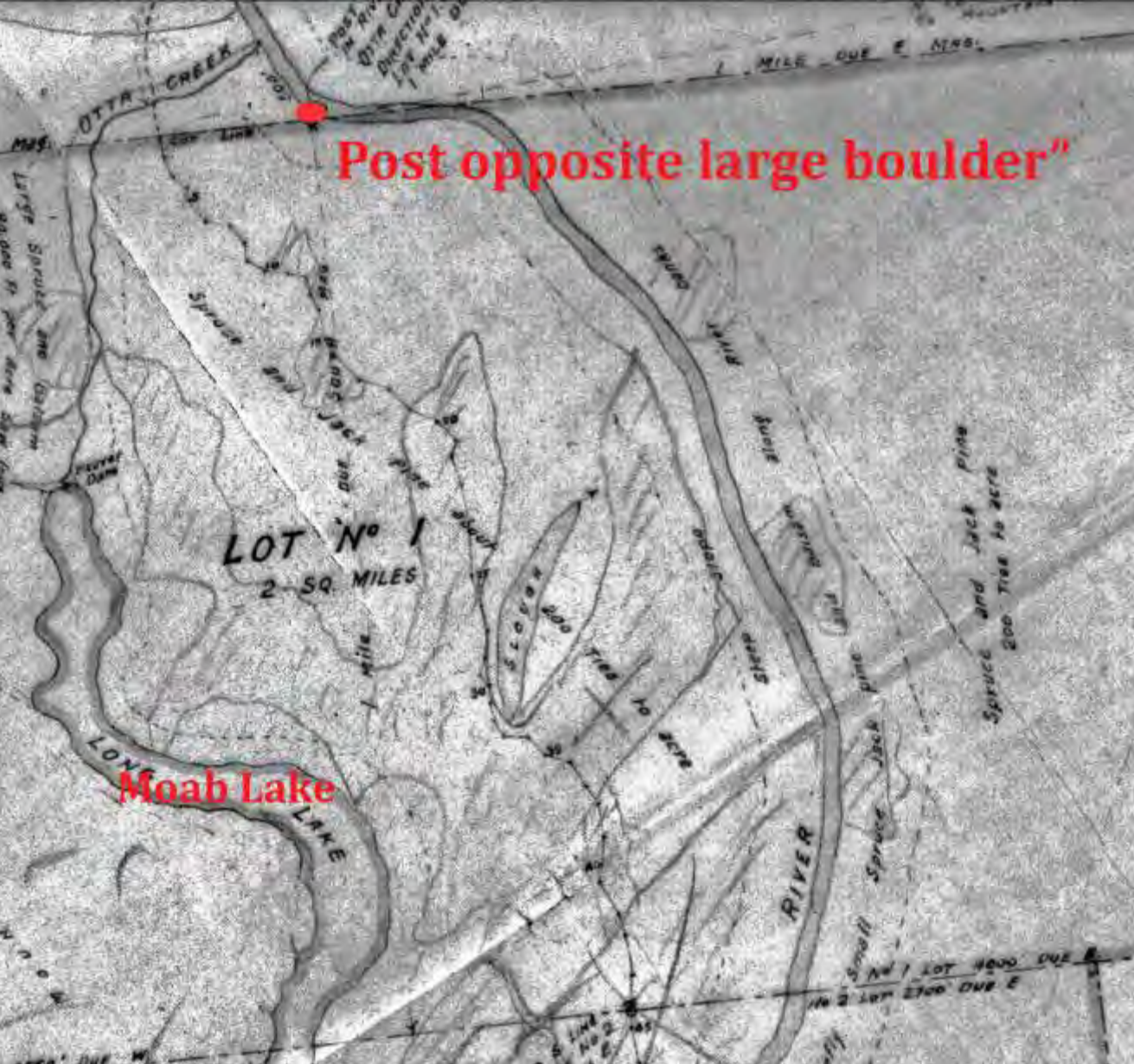
**Alberta Central RR Red Deer
1910**

**WW I Canadian Army Engineer
1916**

**Resident Road Engineer Jasper
1919 - 1920**

**Chief Highway Engineer
Manitoba 1921**





**Timber
Berth
Tie
Point:

Large
Boulder**



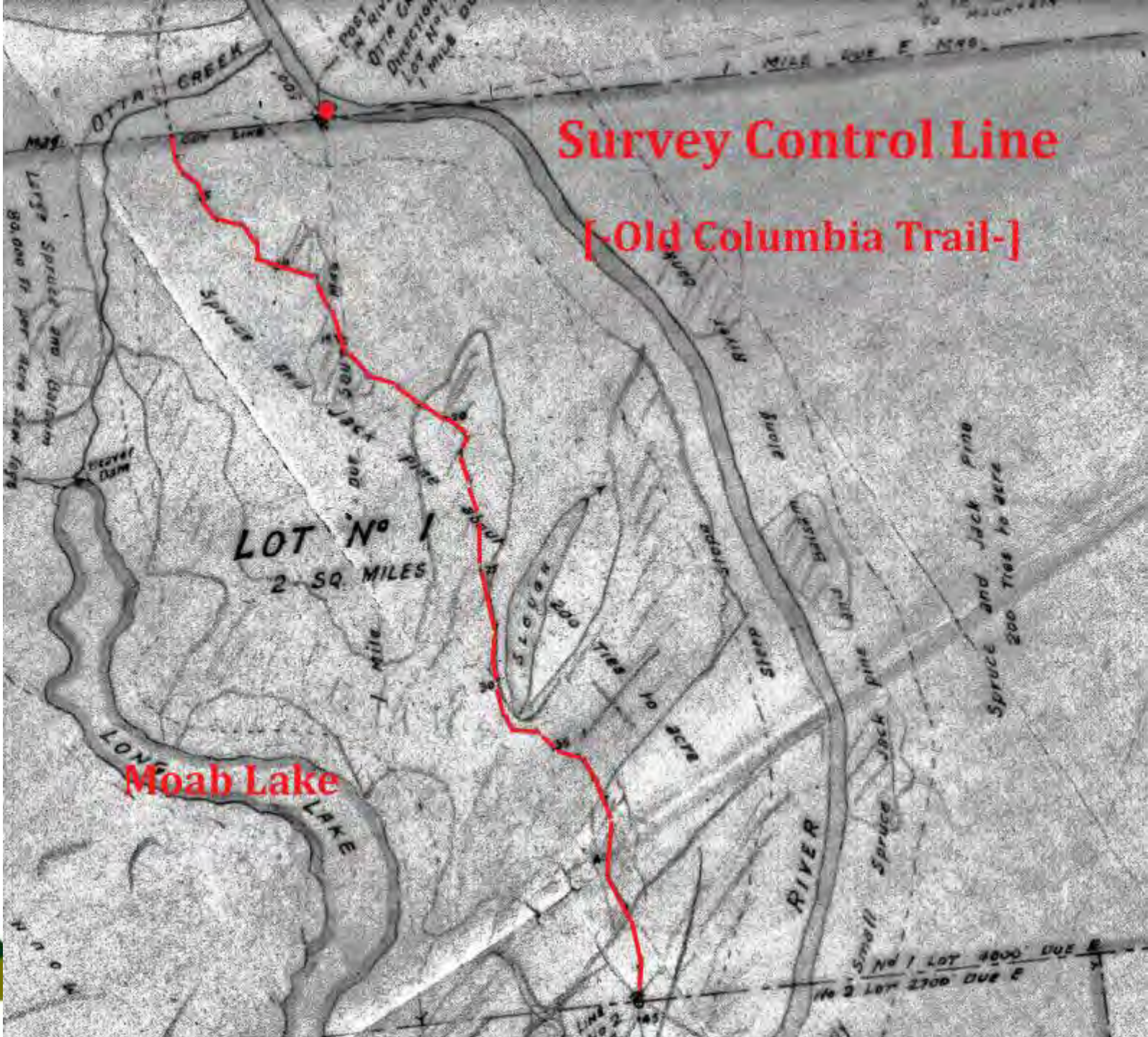




Survey Control Line
[Old Columbia Trail-]

Moab Lake

LOT N^o 1
2 SQ. MILES



Old Columbia Trail





James McNiece
Austin
1866-1922

Highest Bidder
Whirlpool
Timber Berth
1919



Adaptive Fores



AUSTIN & NICHOLSON

CHAPLEAU, ONTARIO

Largest Producers of **Railroad Ties** *In the Dominion*

**Pine and Spruce—Lumber—Lath—Piling
Railroad Ties—Pulpwood**

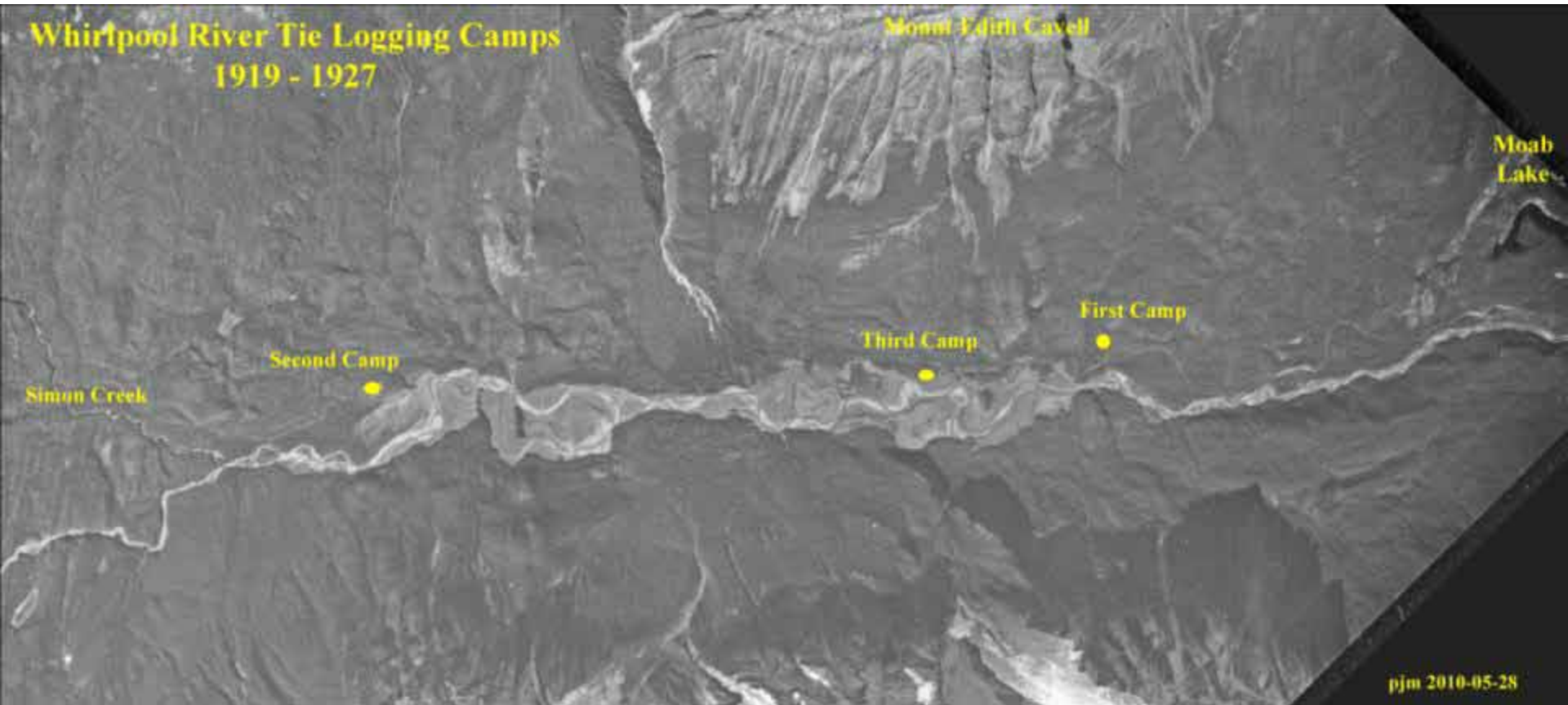
FIRST CLASS PLANING-MILL EQUIPMENT

Facilities for delivering Pulpwood to Michipicoten
Harbour, Lake Superior

Splendid facilities for Dressing and Matching in straight car lots,
one or more widths

Mills at NICHOLSON, ONTARIO, Main Line C.P.R.

Tie Camp Locations



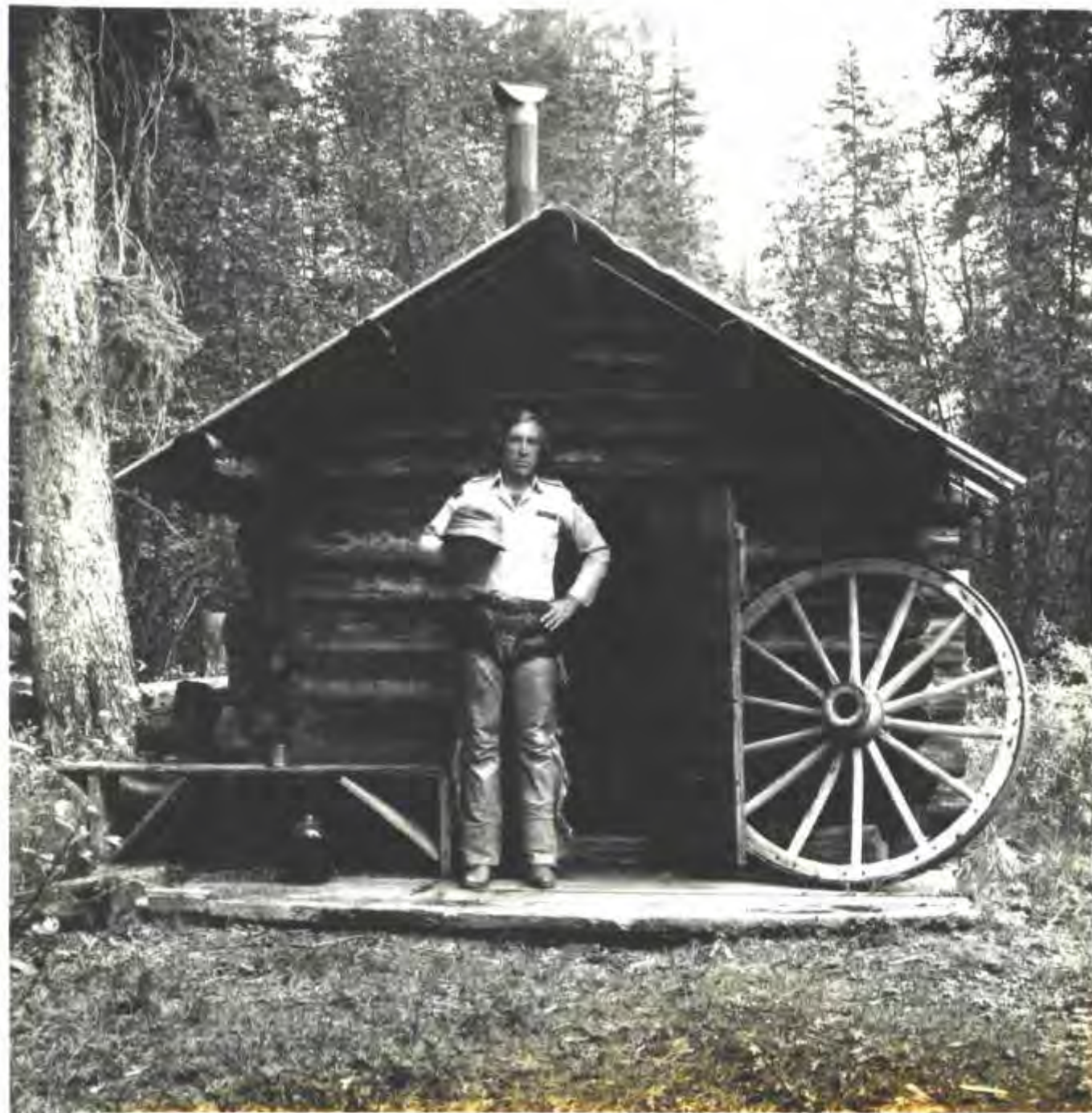
First Camp







Tie Camp Cabin



1938 Air Photo – Camp 1 Area





1938 Air Photo

Fire
Guard
1926

Camp 1

Camp 3



Adaptive Forest Management/ History

Second Tie Camp Area



“Wagonwheel” Camp



Third Tie Camp



Second Camp from Third Camp





Otto Brothers



Contractors

James C. Gibson

David E. Conroy

Tom Staples

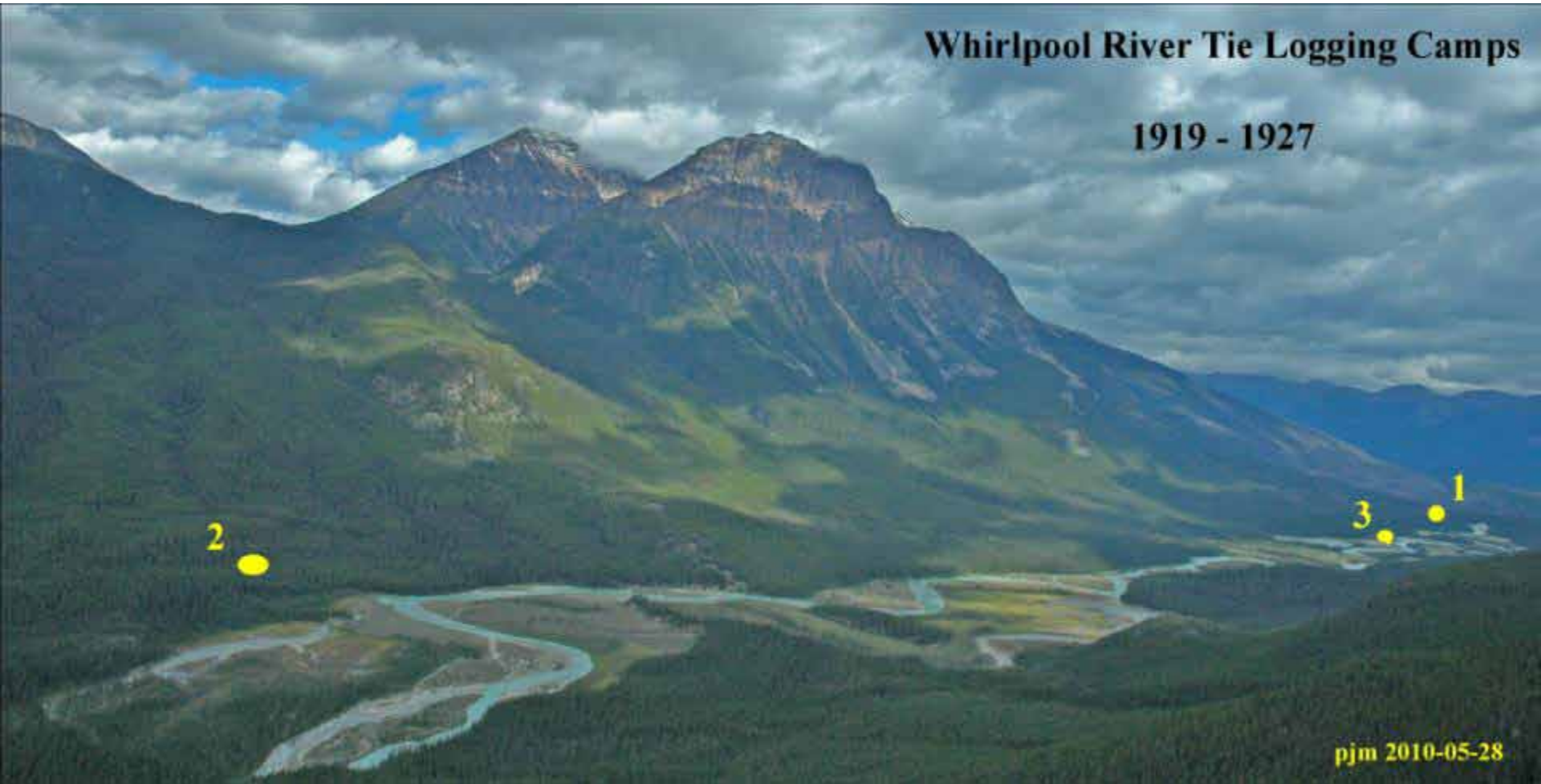
Dennis (“Dinny”) Hogan

Jack, Bruce and Closson Otto



Adaptive Forest Management/ History

Whirlpool Tie Camp Locations





Rapids by Moab Lake

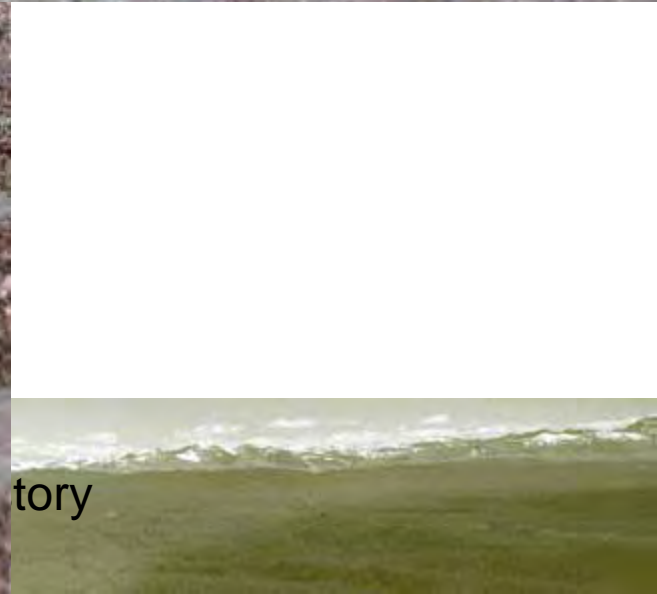


Boom logs by present 93A Bridge

JYMA
2008.114.02



Cable or light chain



tory





Possible Holding Boom at Maligne River



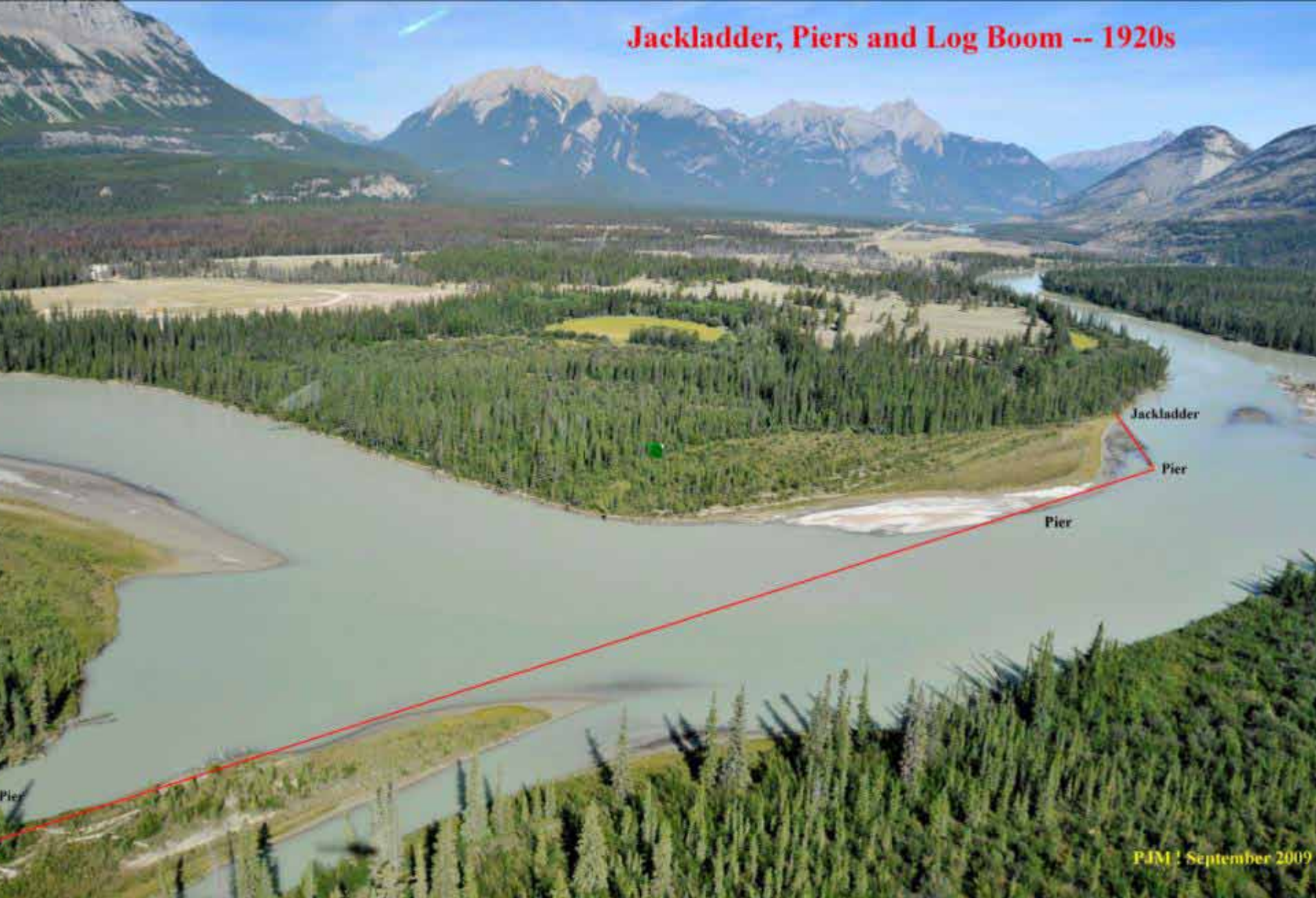
Pier in Athabasca -- Jackladder Area



“Tie Island” Pier



Jackladder, Piers and Log Boom -- 1920s



PJM! September 2009



Possible Jackladder Boom Layout



ment/ History

Log Holding Boom JYMA PA46-122

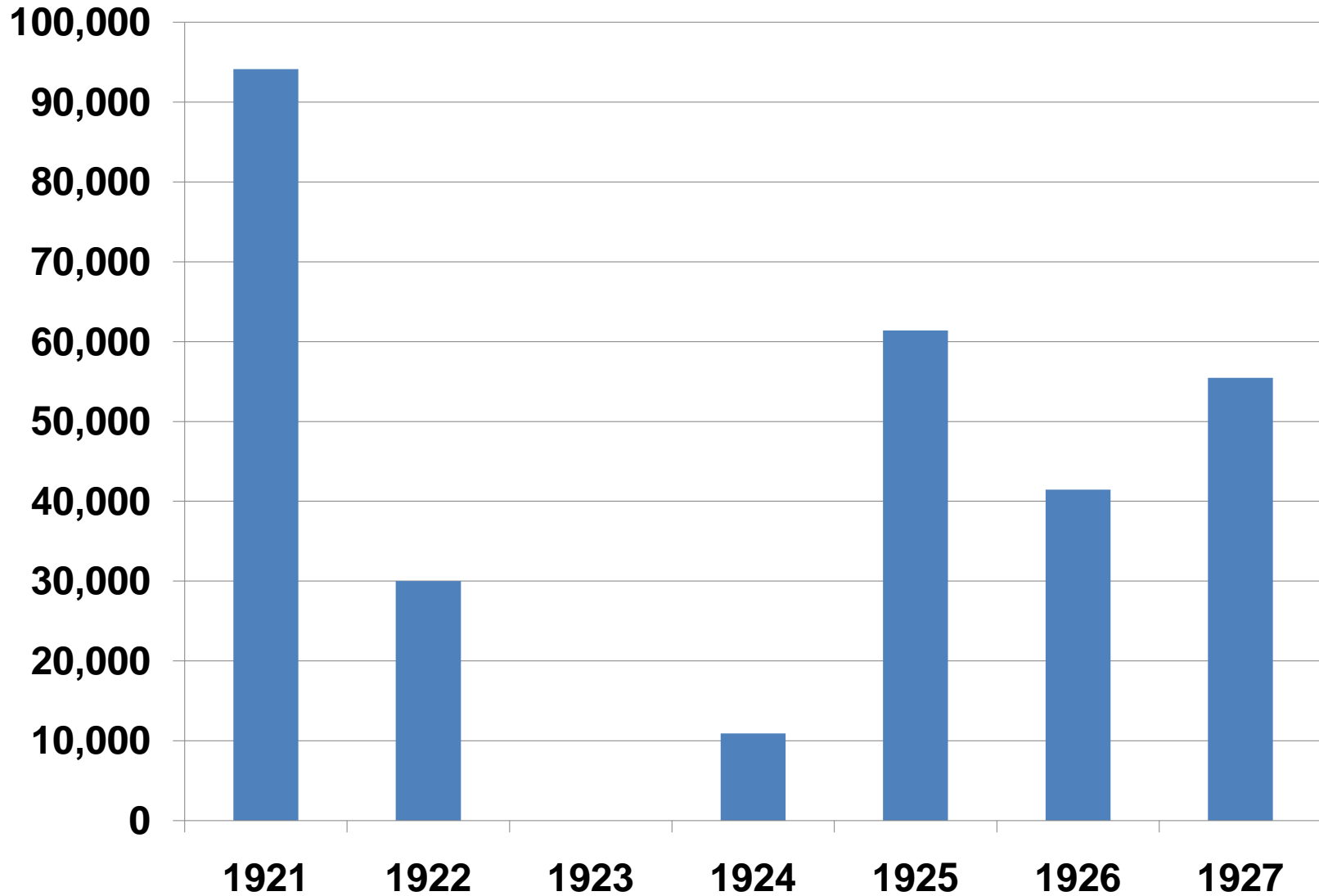








Whirlpool Railroad Tie Production







Boom Logs on the Delta



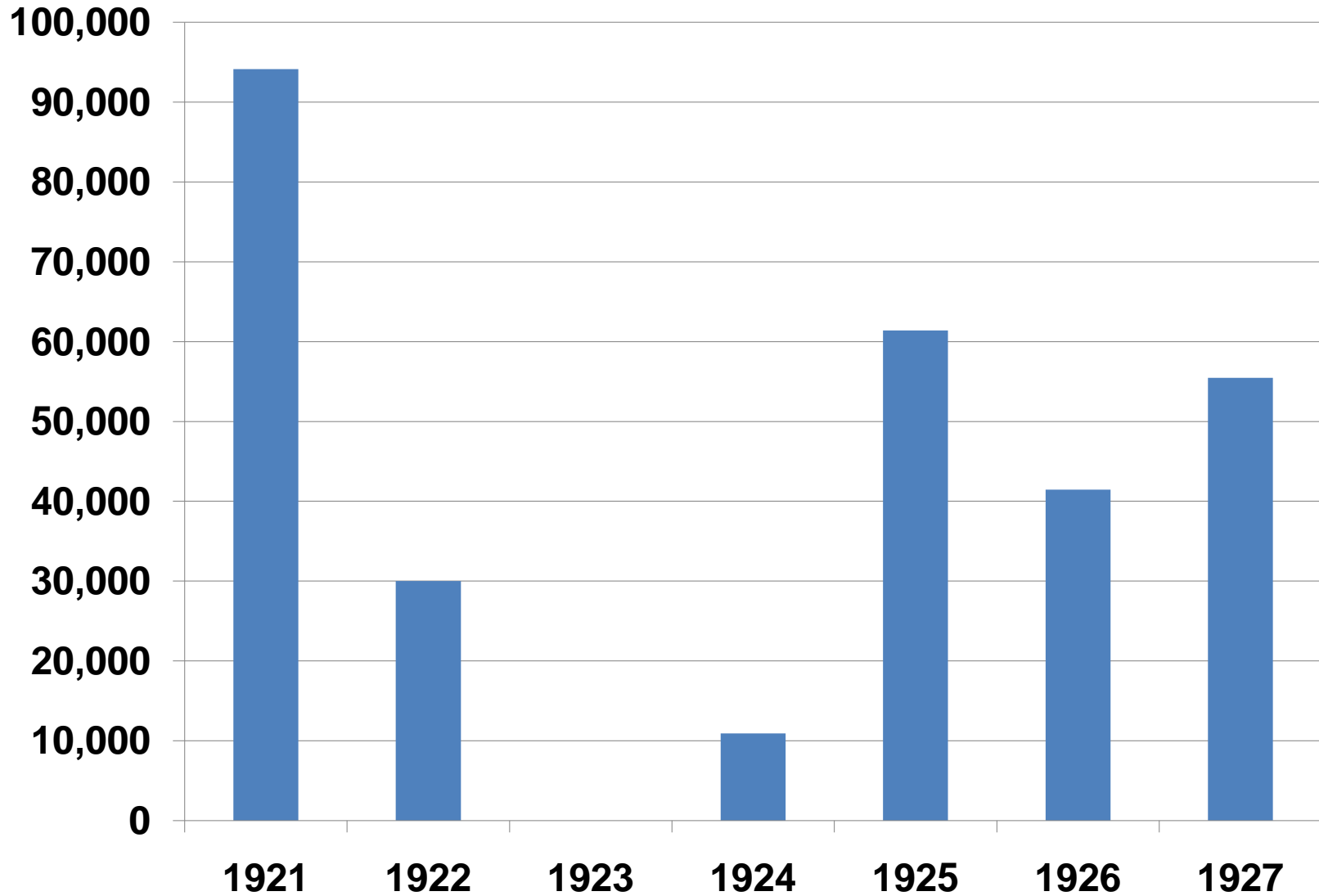
Cold Sulphur Spring







Whirlpool Railroad Tie Production



Adaptive Forest Management/ History

1927 boom & skiffs



The End