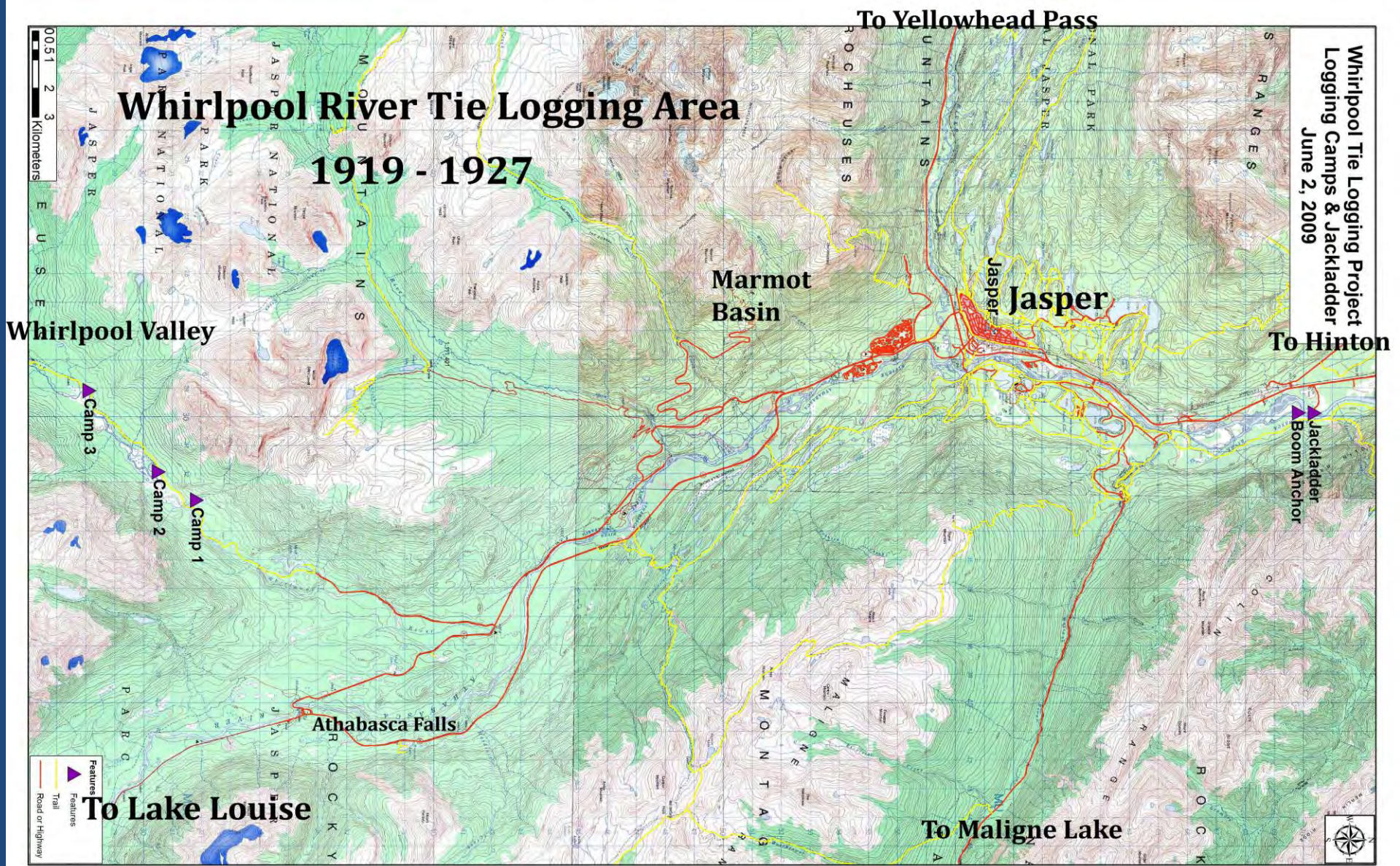


The Jackladder: Tie Logging on the Whirlpool

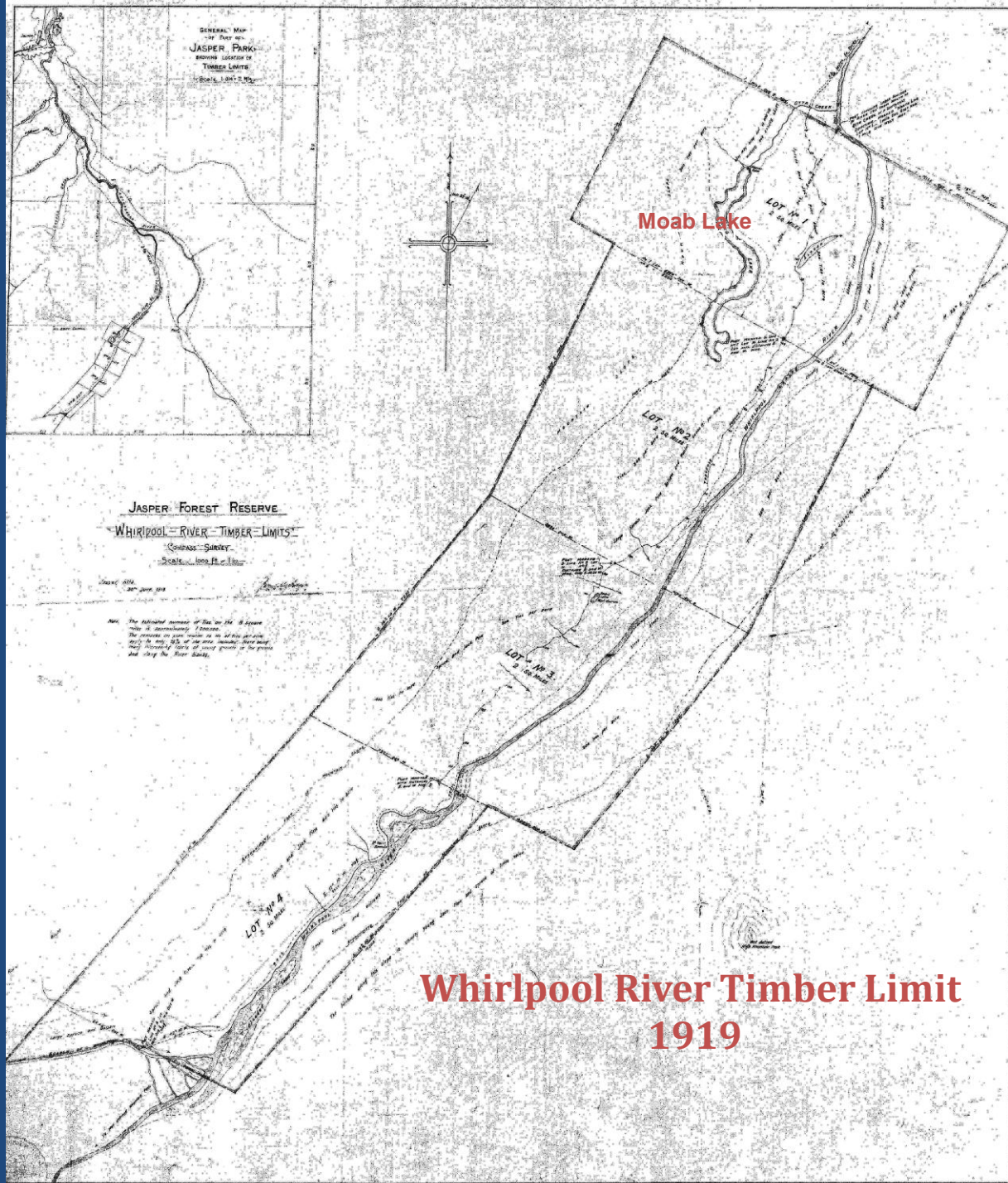


Whirlpool Tie Logging Project
Logging Camps & Jackladder
June 2, 2009

Whirlpool River Tie Logging Area 1919 - 1927



50 km



JASPER FOREST RESERVE

WHIRLPOOL RIVER TIMBER LIMITS

COMPASS SURVEY

Scale. — 1000 ft. = 1 in. —

Jasper, Alta

30th June, 1919

J. Grant MacGregor
Resident Engineer

Note. The estimated number of Ties on the 5 square miles is approximately 1,200,000.
The remarks on plan relative to No of ties per acre apply to only 75% of the area included, there being many intervening tracts of young growth in low ground and along the River Banks.

J. Grant MacGregor



Guelph-Goderich RR to 1909

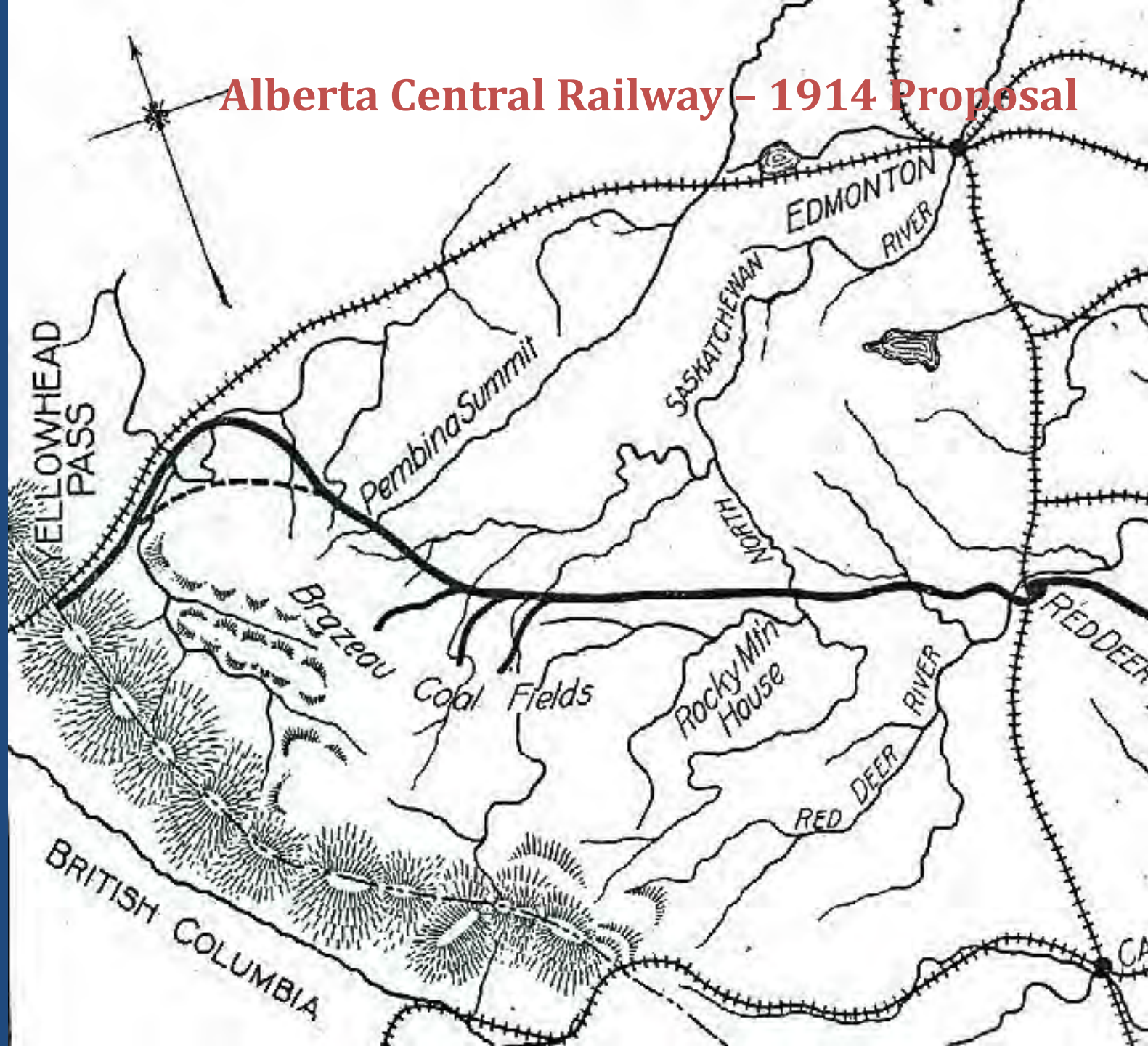
**Alberta Central RR Red Deer
1910**

**WW I Canadian Army Engineer
1916**

**Resident Road Engineer Jasper
1919 - 1920**

**Chief Highway Engineer
Manitoba 1921**

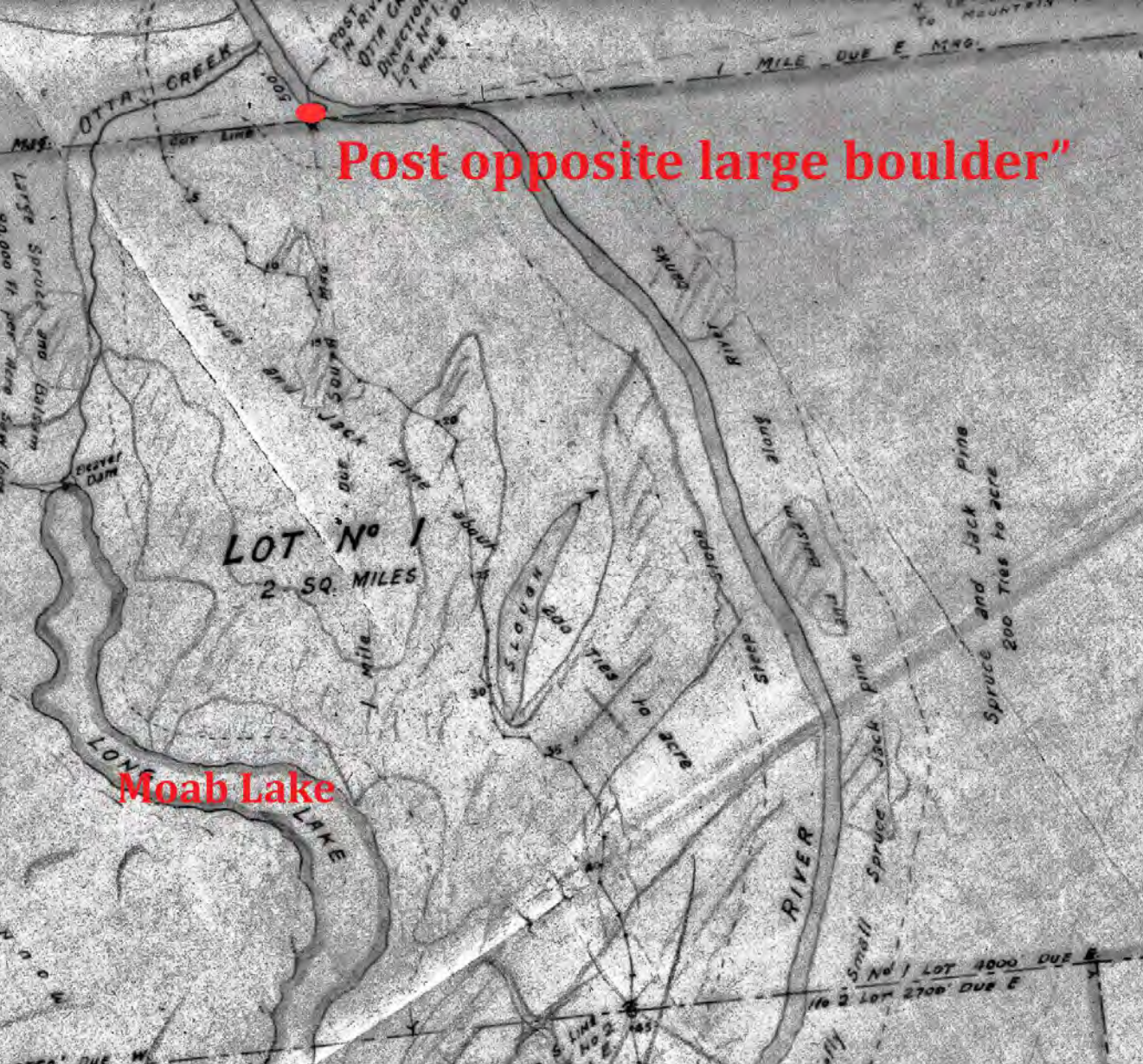
Alberta Central Railway - 1914 Proposal





**J. Grant
MacGregor**

**Resident
Engineer**



Post opposite large boulder"

1919
Timber
Berth
Tie Point:

Large
Boulder

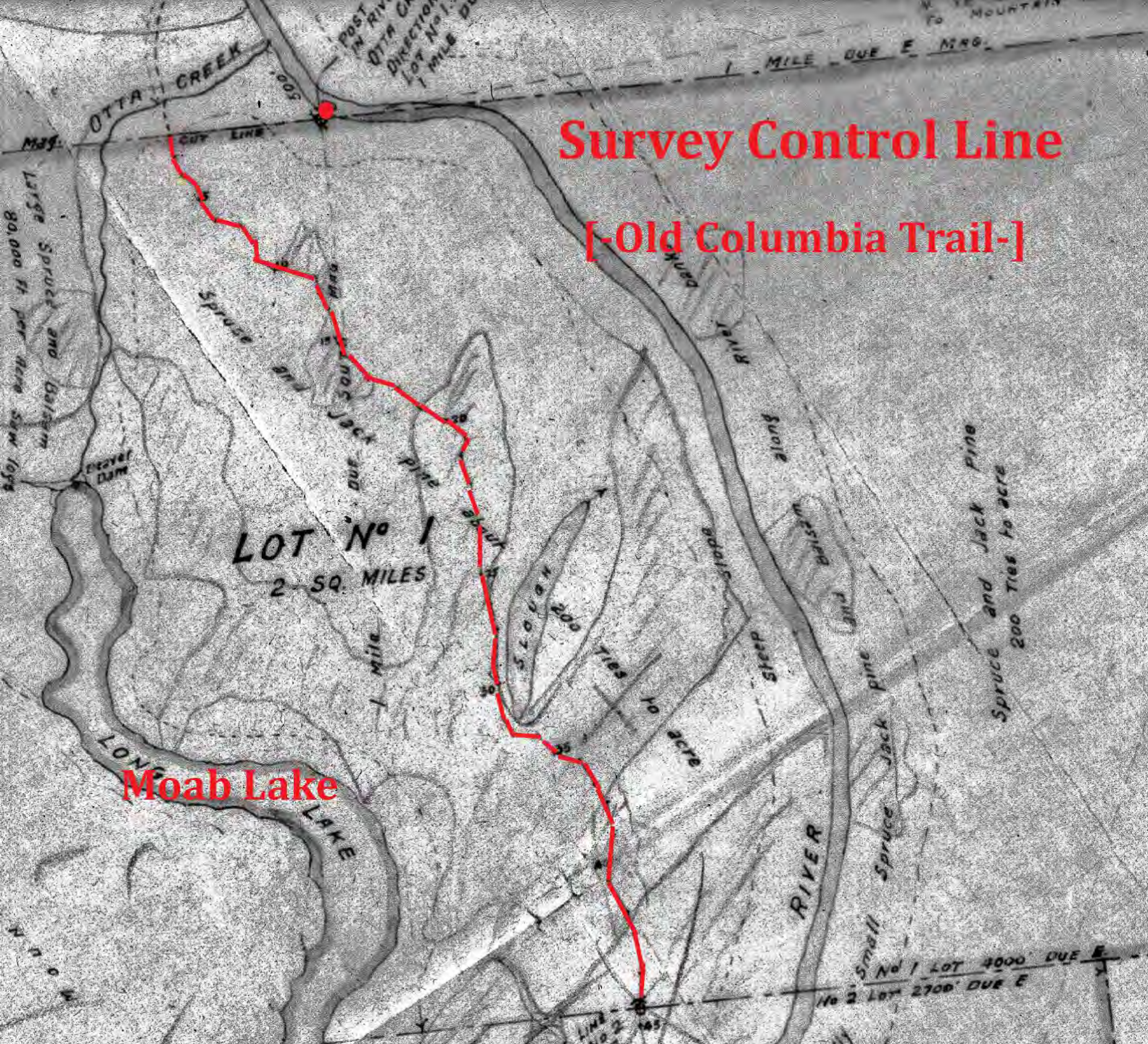




Survey Control Line

[Old Columbia Trail-]

Moab Lake

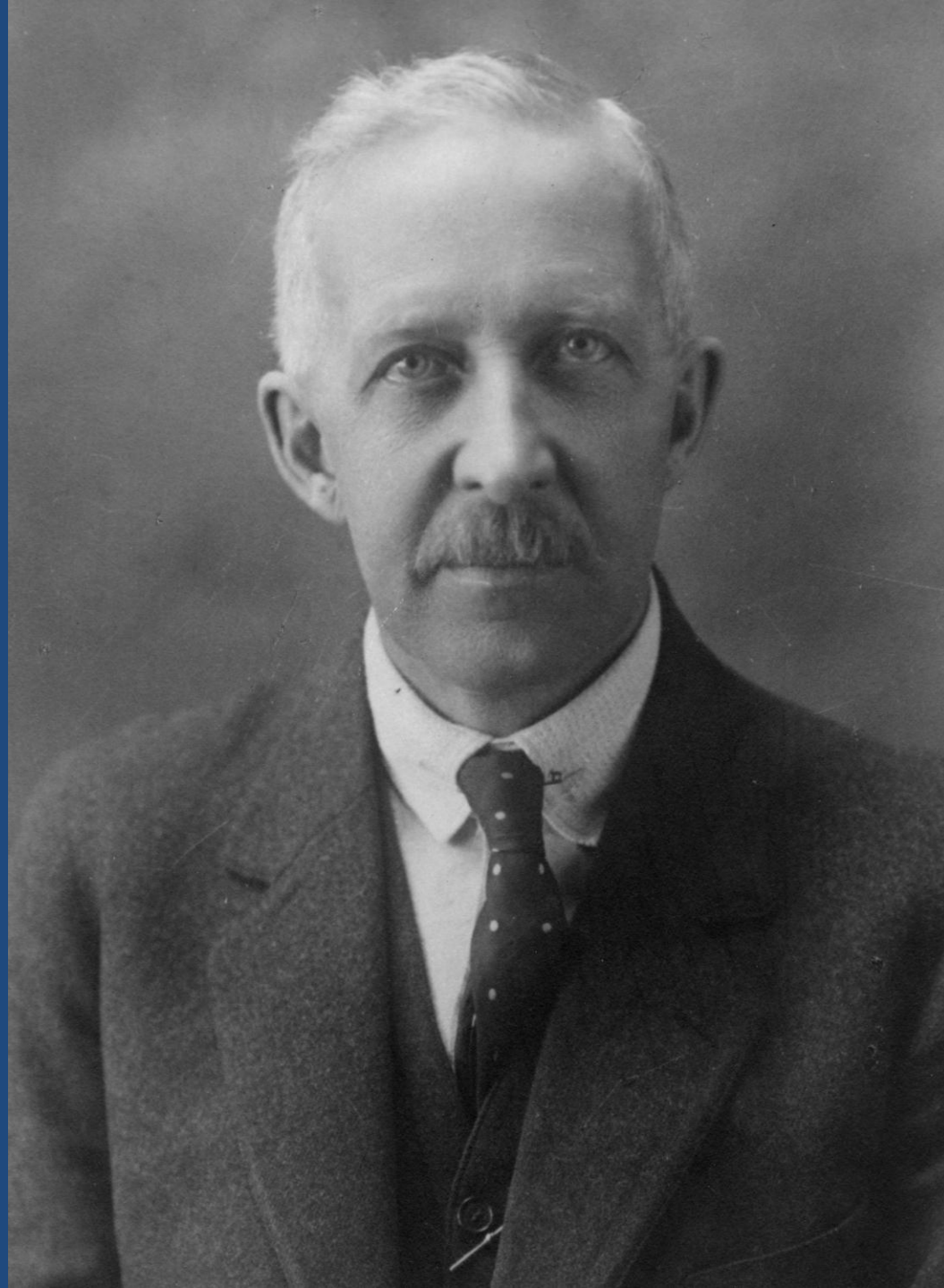






James McNiece
Austin
1866-1922

Highest Bidder
Whirlpool
Timber Berth
1919



AUSTIN & NICHOLSON

CHAPLEAU, ONTARIO

Largest Producers of **Railroad Ties** *In the Dominion*

**Pine and Spruce—Lumber—Lath—Piling
Railroad Ties—Pulpwood**

FIRST CLASS PLANING-MILL EQUIPMENT

Facilities for delivering Pulpwood to Michipicoten
Harbour, Lake Superior

Splendid facilities for Dressing and Matching in straight car lots,
one or more widths

Mills at NICHOLSON, ONTARIO, Main Line C.P.R.

Warden J.M. Christie





TIE CAMP CABIN



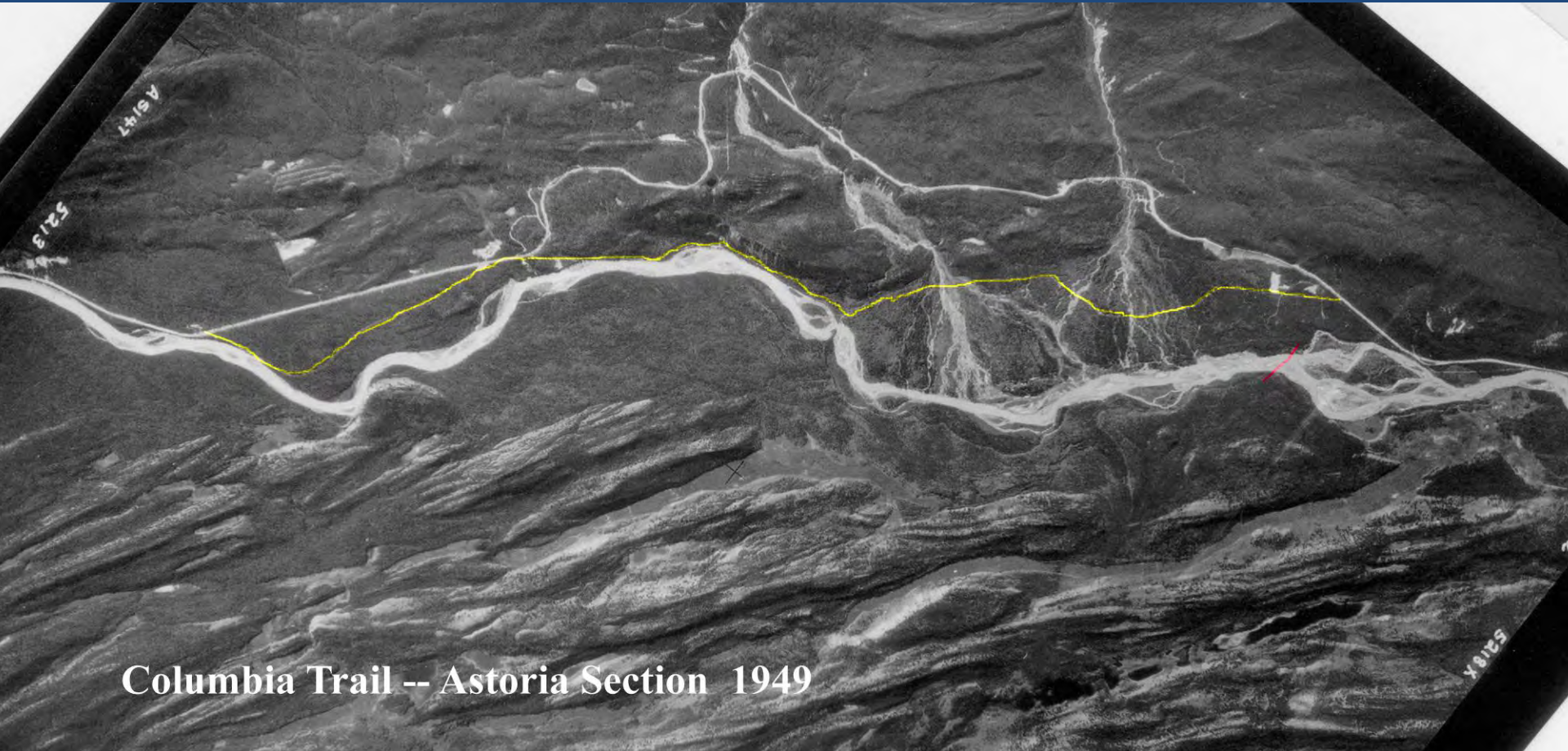
Whirlpool River 1944



SIMON CREEK CABIN

Astoria and Portal Creeks Highway 93A in 1949

1920s Tote Road in yellow



Columbia Trail -- Astoria Section 1949

Otto's Cache – Otto brothers



Moab Lake -- "Slide"



W. Ruddy 1962

Rapids by Moab Lake



Moab Lake and the Columbia Trail

-- Trail location based on 1919 Timber Berth Survey --

Moab Lake

Warden Sawmill Site

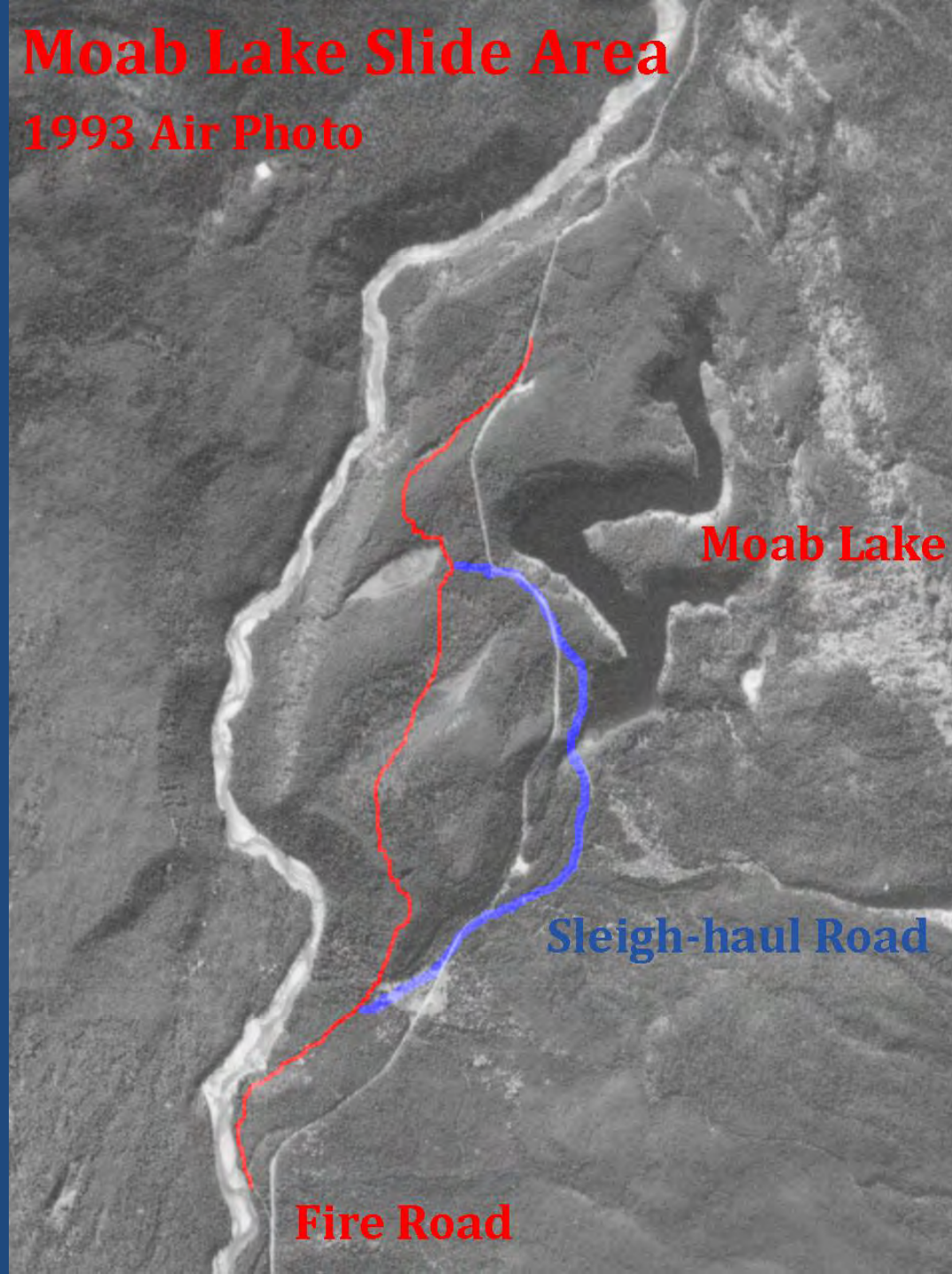
Otter Creek

Whirlpool River



Moab Lake Slide Area

1993 Air Photo



Moab Lake

Sleigh-haul Road

Fire Road

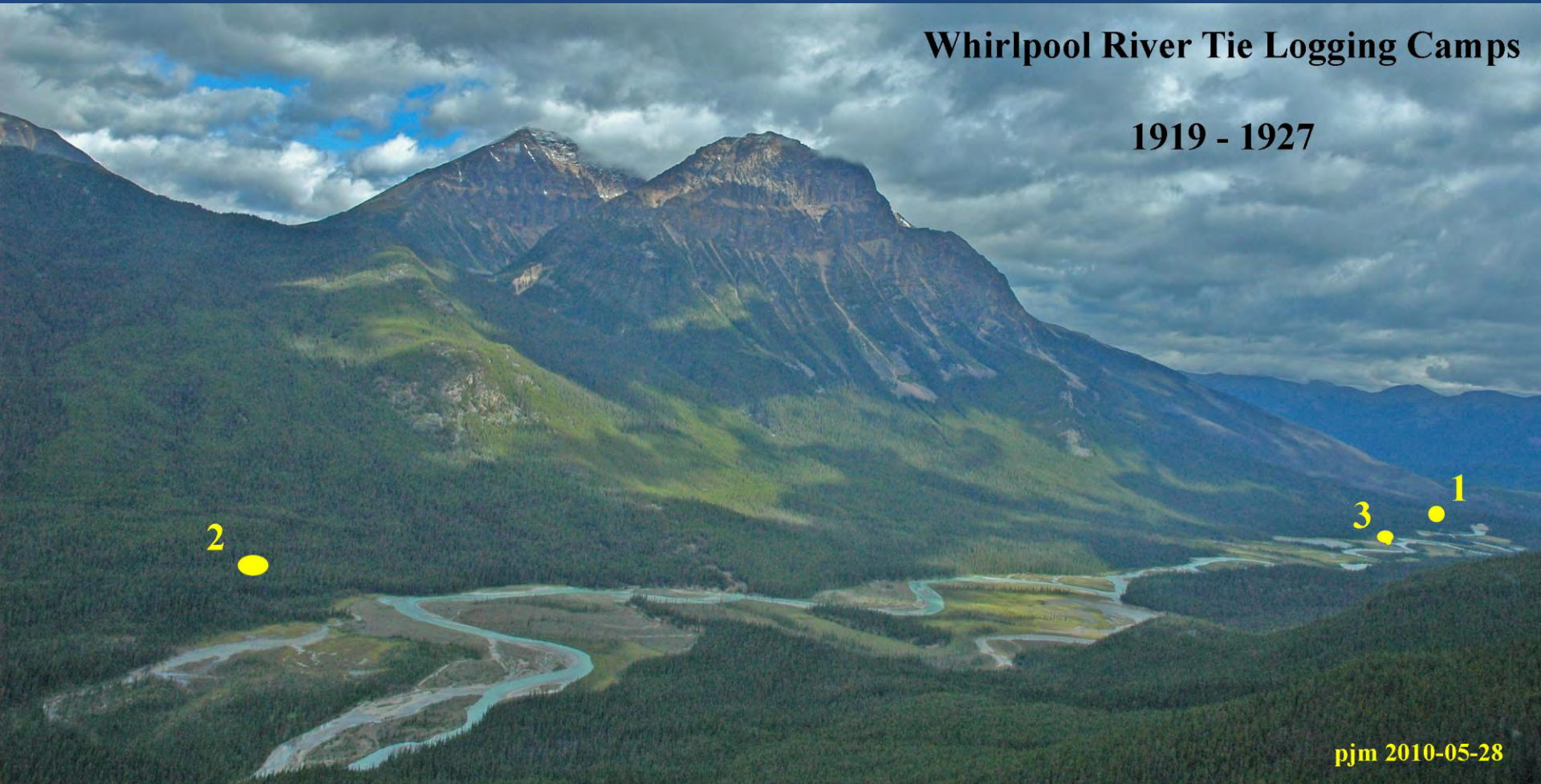




Whirlpool Tie Camp Locations

Whirlpool River Tie Logging Camps

1919 - 1927



pjm 2010-05-28

Bob Stevenson photo - 2007

Whirlpool Tie Camp 1

Whirlpool Campground



Fire Road

First Camp



First Camp – A Metaphore





Second Camp Simon Creek area



Whirlpool Tie Camp 2



“Simon Creek” – Camp 2



Whirlpool Tie Camp 3



Third Tie Camp





Otto Brothers



Contractors

James C. Gibson

David E. Conroy

Tom Stapley

Dennis (“Dinny”) Hogan

Jack, Bruce and Closson Otto

JYMA 997.07.250.02

CARS FOR HIRE
OTTO BROTHERS
GUIDES AND OUTFITTERS
CARS FOR HIRE



Otto Brothers – guides, outfitters, garage, taxi

Pocahontas Coal Mine c. 1915 David E. Conroy 1928 Proposal

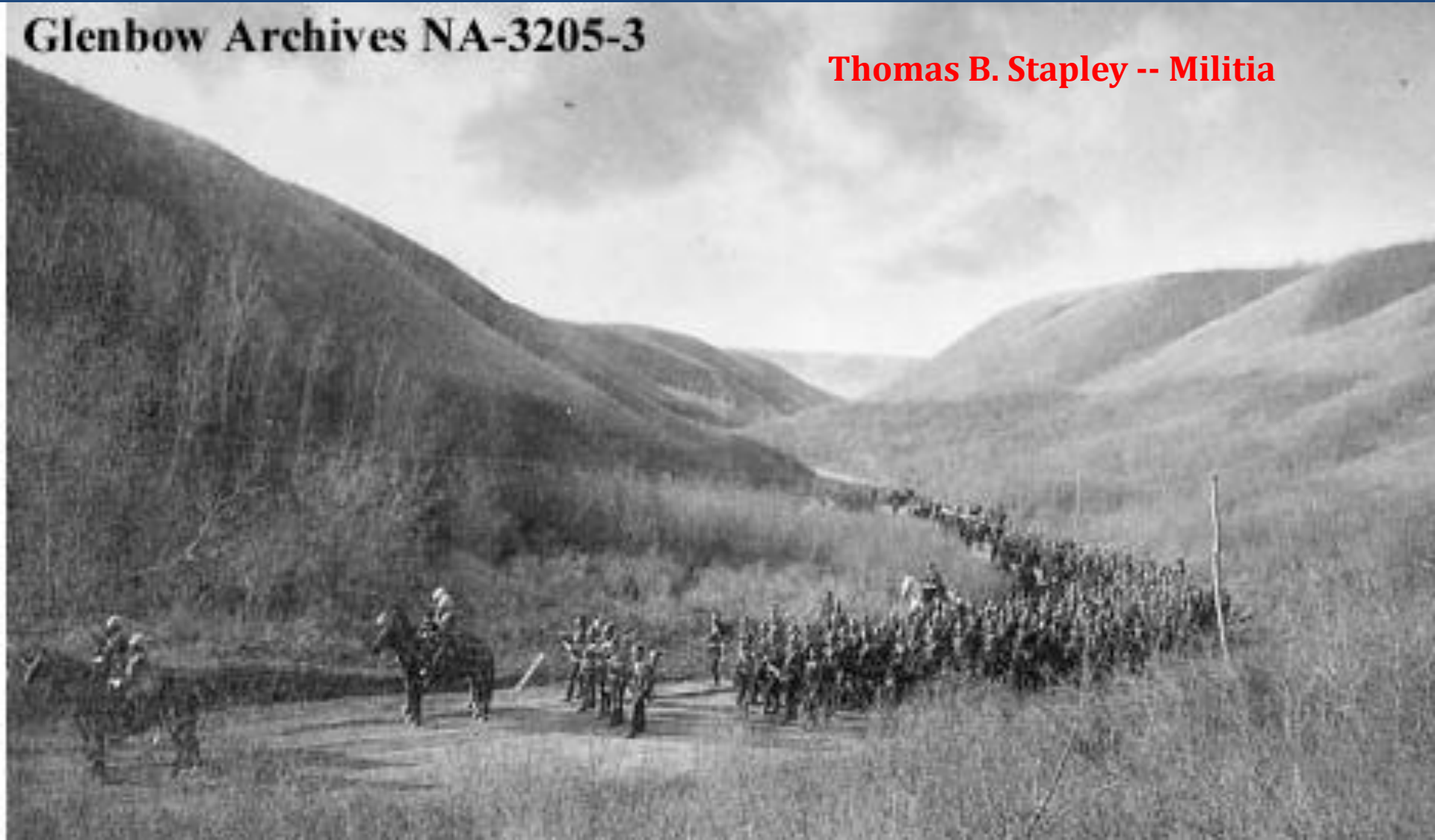
JYMA PA 39-23



Canadian Militia North-West Rebellion 1885

Glenbow Archives NA-3205-3

Thomas B. Stapley -- Militia



Lethbridge sawmill



Broad Axe - tie hacking





Edd Neighbour

Hauling a
sleigh-load of
wood.

Sleigh-load of Railway Ties



Tie Landing site – Camp 1 area



Tie Landing



Watering Ties from a Jam



Pointer – log-driving skiff



Log-driving Pointer – Camp 2

Tom Peterson photo 1987 – Roy Richards & Wally Butler



BODY RECOVERED IN BRIDGE PIER

Identified As Ernest J. Sorenson, a Tie Worker, Who Disappeared

Missing for more than a month, the body of Ernest J. Sorenson, who has been employed with Allen and Hogan, tie contractors, near Jasper, was found last week caught in the piers of the Whirlpool River bridge, a few miles from his place of employment. Sorenson, a Dane, only landed in this country on July 18.

A pike pole and cap were found on the banks of the Whirlpool River a tributary of the Athabasca, on August 1, and it was presumed at that time that Sorenson had been drowned. The body, lying some feet under water, was found by Dennis Hogan, the man's employer, and although his clothing had been entirely washed away, identification was still possible.

The R.C.M.P. have had the matter in hand, and the dead man's only known relative, a brother living in Illinois, has been notified.

Ernest J.
Sorenson

Tie Driver

d. 1 August 1924

“Tie Island” Pier



Jackladder, Piers and Log Boom -- 1920s



Pier in Athabasca -- Jackladder Area





Possible Jackladder Boom Layout

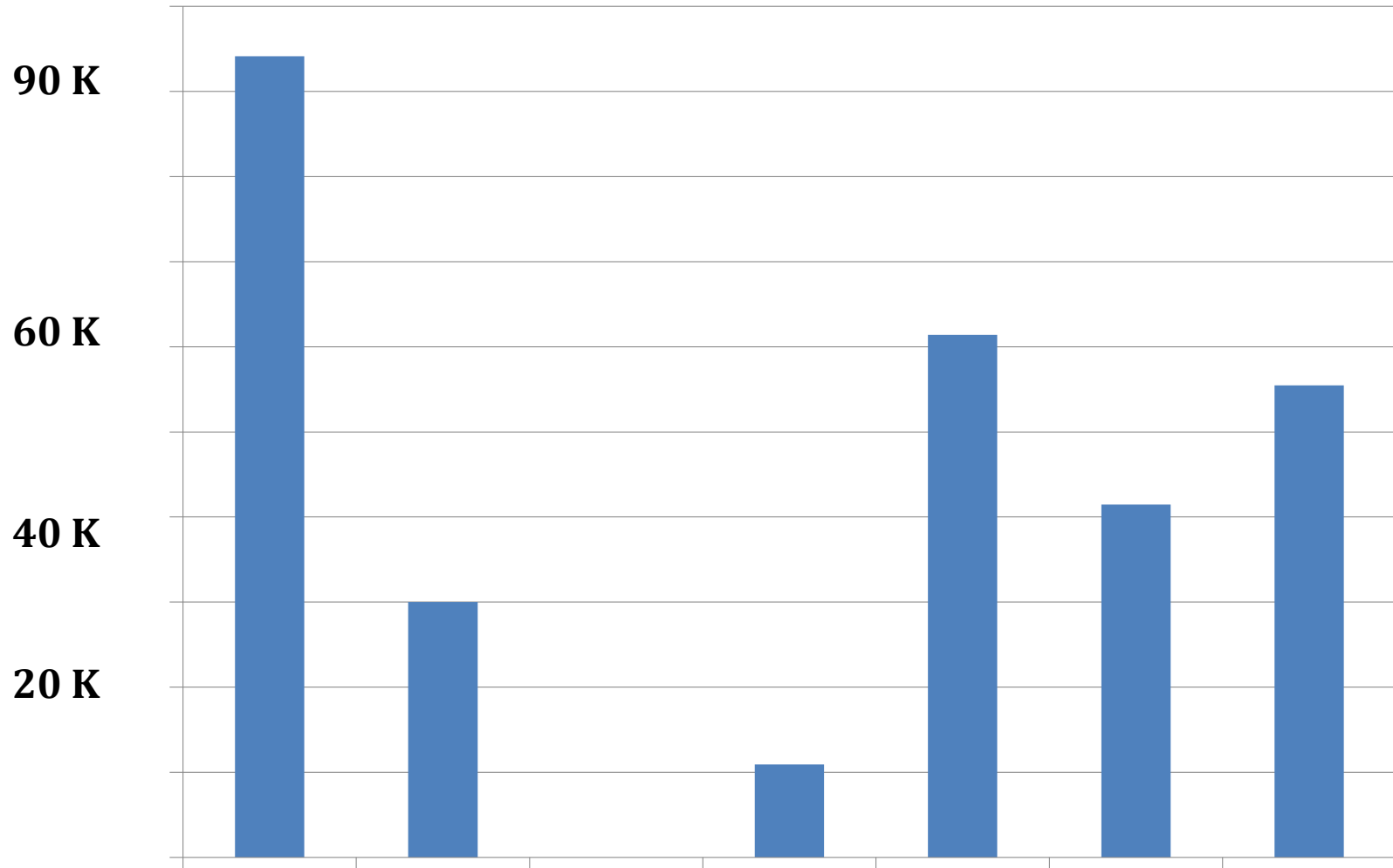
Holding Boom



The Jackladder



Tie Production 1921 - 1927



300,000





Boom Logs on the Delta



9-11

8

5-7

3

4

P

Cold Sulphur Spring

The Jackladder – End of the Drive



