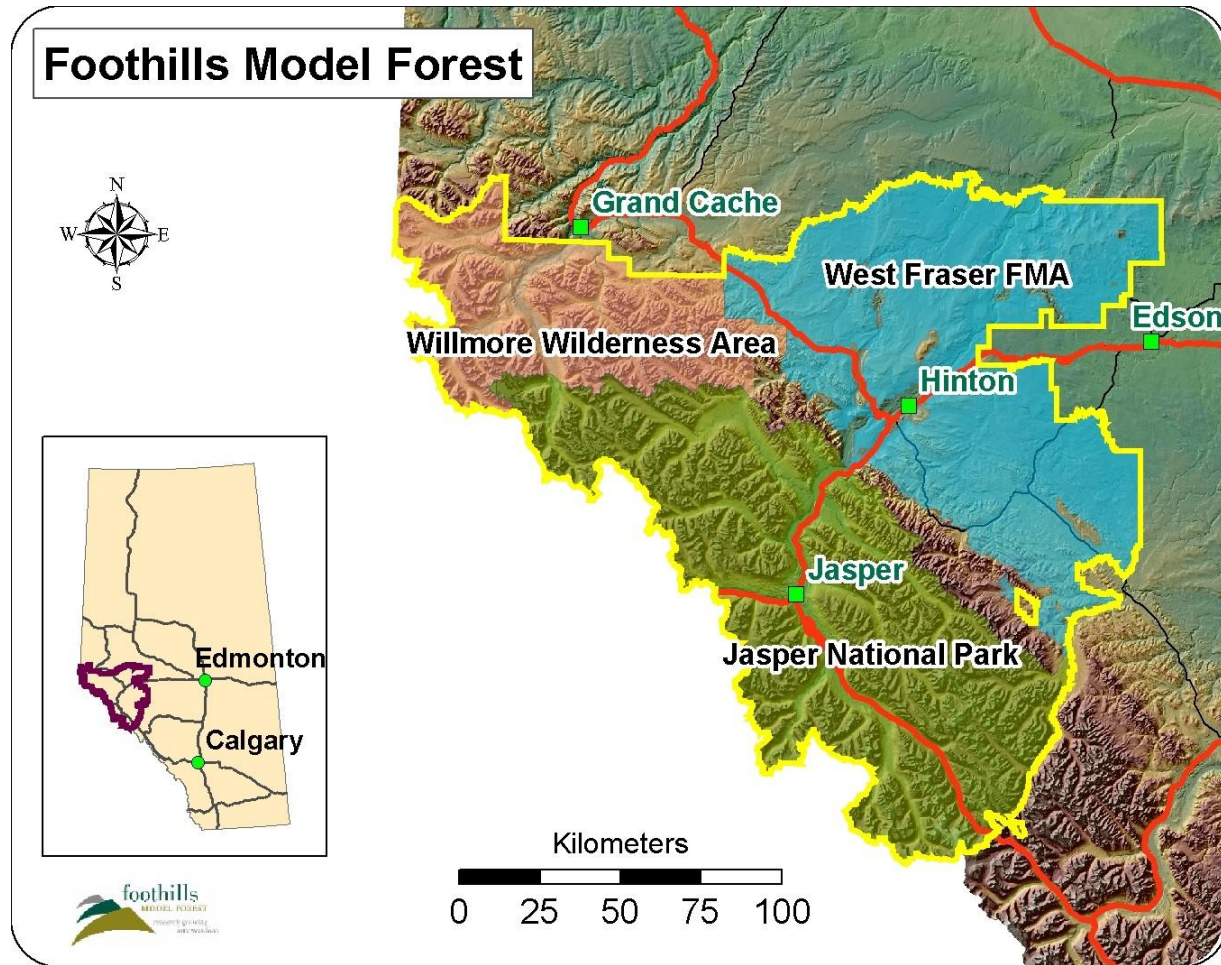


Annual General Meeting  
November 21-22, 2006

# Aboriginal Involvement Program



# Map of the Foothills Model Forest



# Foothills Model Forest Aboriginal Involvement Program



# Aboriginal Involvement Program

**-Three inter-related sub program areas-**

- 1. Standardized Multi-community Traditional Cultural Study (2002)**
- 2. Industry Community Referral Process (2006)**
- 3. Support Community – Industry site visitations (2006)**

# Aboriginal Involvement Program

## What We've Accomplished:

### -Multi-community Traditional Cultural Study-

- 1) Documented and storing +1100 quality control checked cultural sites
- 2) 4 communities' sites in one central, protected database
- 3) Train and support the professionalization of community technicians
- 4) 1 'new' community just signed
- 5) 2 more communities planned

# Aboriginal Involvement Program

## What We've Accomplished:

### -Referral Process + Supporting Site Visitations-

- 1) Protected 9 cultural sites from potential disturbance
- 2) 8 pilot referral runs by 4 companies (Shell, Suncor, West Fraser, Coal Valley Resources)
- 3) Savings to companies of \$10-30k per day of planning time by using process



# Aboriginal Involvement Program

## What We've Accomplished:

- 1) **Incubating the first operational 'Alternative Regional Consultation Support Model' in the nation**
- 2) **Coordination table for access and communication with communities for land use issues**
- 3) **No major political blow ups or blockades**



# Aboriginal Involvement Program

## How:

- 1) **Relationships: Leveraging Community – Industry – Government partnerships**
- 2) **Information: Relying on an Information base rather than strickly politics and policy**
- 3) **Respect: Utilize the data we have via relationships and technology**





# Aboriginal Involvement Program

## Recognizing the Context:

- 1) **Social Environment**
- 2) **Political Environment**
- 3) **Legal Environment**
- 4) **Business Environment**

# Context - Historical

## *-A meeting of civilizations-*

- 1876 Treaty 6
- 1877 Treaty 7
- 1899 Treaty 8
- 1905 Province of Alberta
- 1930 Natural Resources Transfer Act
- Political, Legal, Physical, Cultural Dimensions and Legacies
- On-going relationships and developments



# Context - Political

## *-A political/legal/ethical challenge-*

- *UN International Bill of Rights and Universal Declaration of Human Rights:*
  1. All Peoples have the right to self determination
  2. Includes the right to develop natural wealth and resources for mutual benefit
  3. State parties have the responsibility to implement
- *The Government of Alberta's First Nations Consultation Policy on Land Management and Resource Development*
- *On-going litigation and conflict*

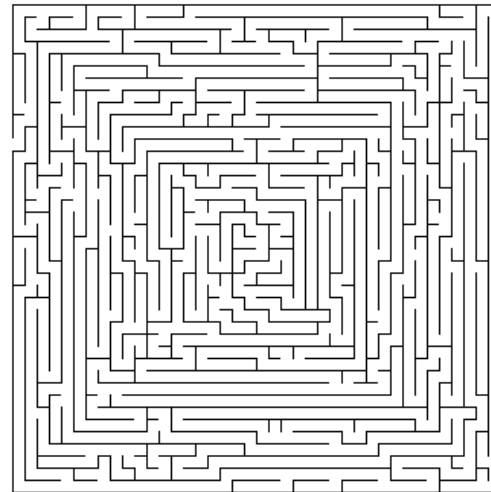


*Existing 'Approach' to Aboriginal  
Involvement with Land Use  
Decision Making*

**Swiss cheese**



**Maze**



# Specifics - TCS

- **Interview information is stored in Microsoft Access database system**
  - Easy to use, inexpensive, high level of use
  - A database tool, not a spreadsheet
  - All information is in one database (interview info, life story, photos, videos...)
  - Standardized recording and storage
  - Proprietary and customized architecture

# Specifics - TCS

- **Consistent, high quality information**
  - Both GPS and interview information
  - It must be good to be defensible
  - If you want to protect it, it must be in the right place
- **Continuous training**
  - GPS, interviewing, Access, GIS
- **Continuous use and update of the information**
  - Use it or lose it!



# Specifics - TCS

- Intellectual property rights belong to individual Aboriginal/Indigenous groups
- Information is confidential and sequestered
- Data sharing is at the discretion of community and elders

# Specifics – Referral Process

- **TEK Community information is stored in ArcGIS Geographic Information System**
  - Industry standard, already used by the FtMF
  - All information is stored in one GIS system (GPS points and lines)
- **Database can be queried to flag any potential development conflicts with a built in reporting mechanism**
- **Capacity for high volumes of queries**
- **Deals with overlapping sites confidentially**

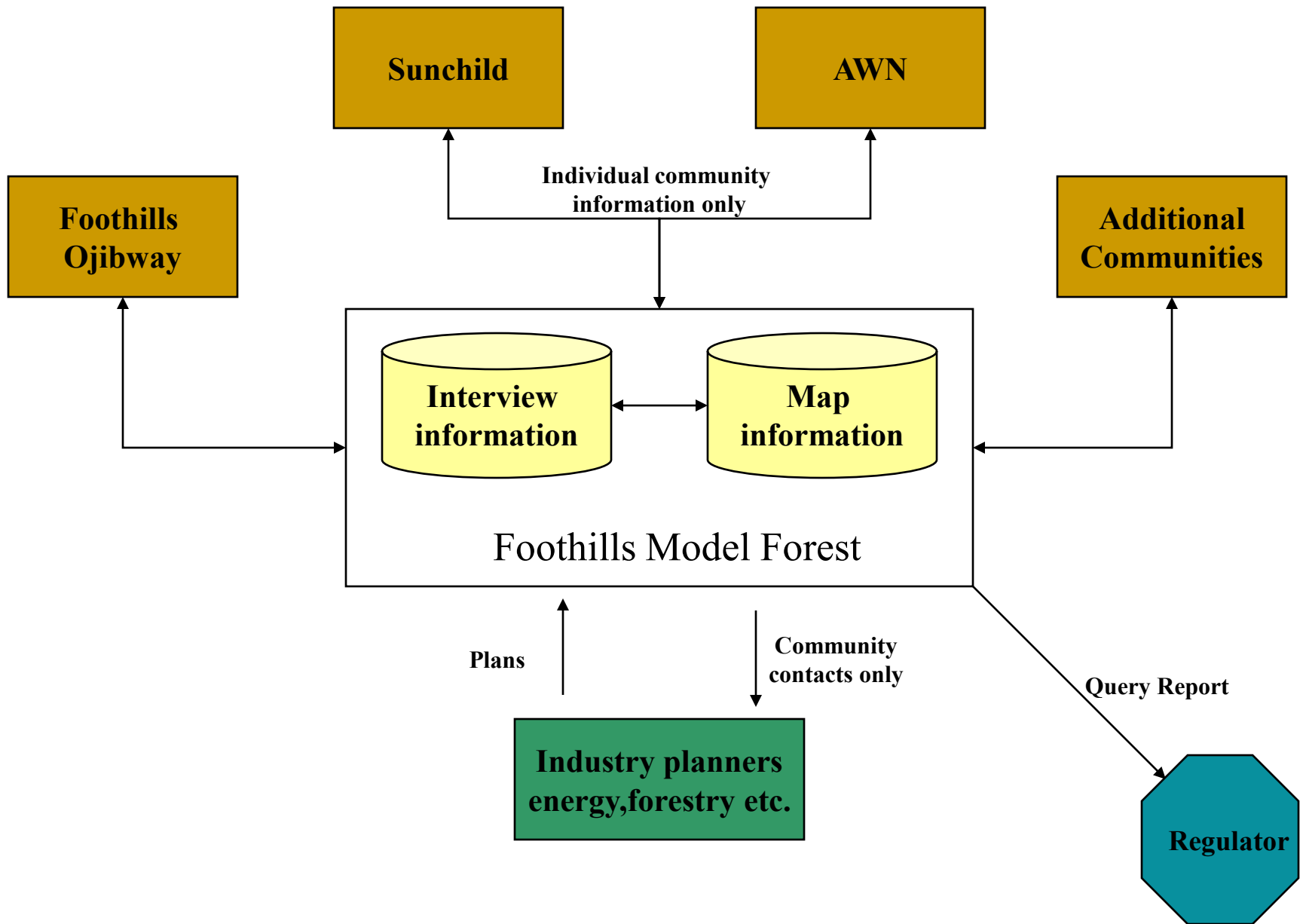




# How the Partners Envision it Working

## The Highlights





**Legend**

-  Grave Sites
-  Spiritual Site
-  Fishing
-  Trapline
-  Proposed Pipelines
-  Proposed Wellsites



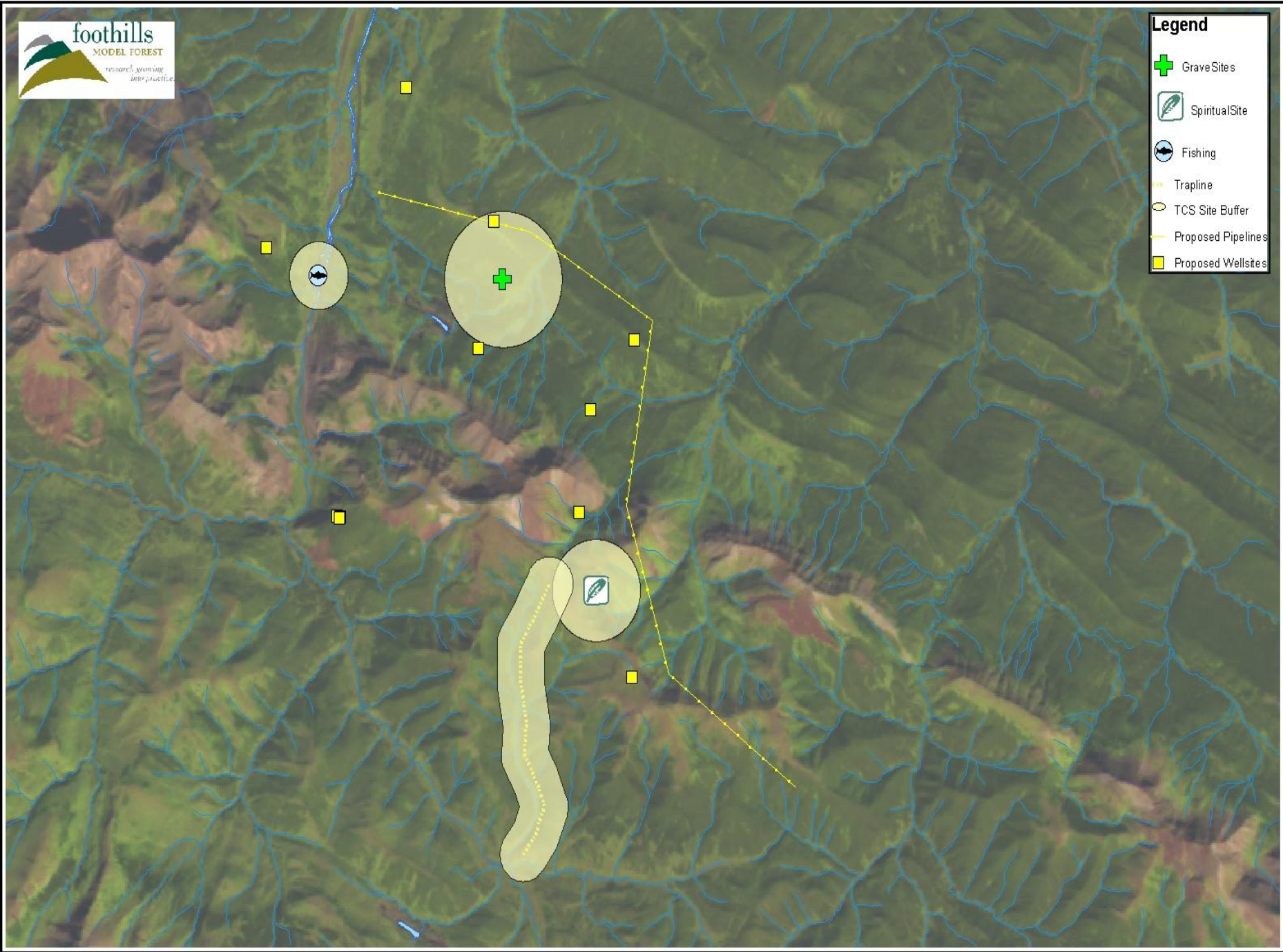
**Legend**

- GraveSites
- SpiritualSite
- Fishing
- Trapline
- Proposed Pipelines
- Proposed Wellsites

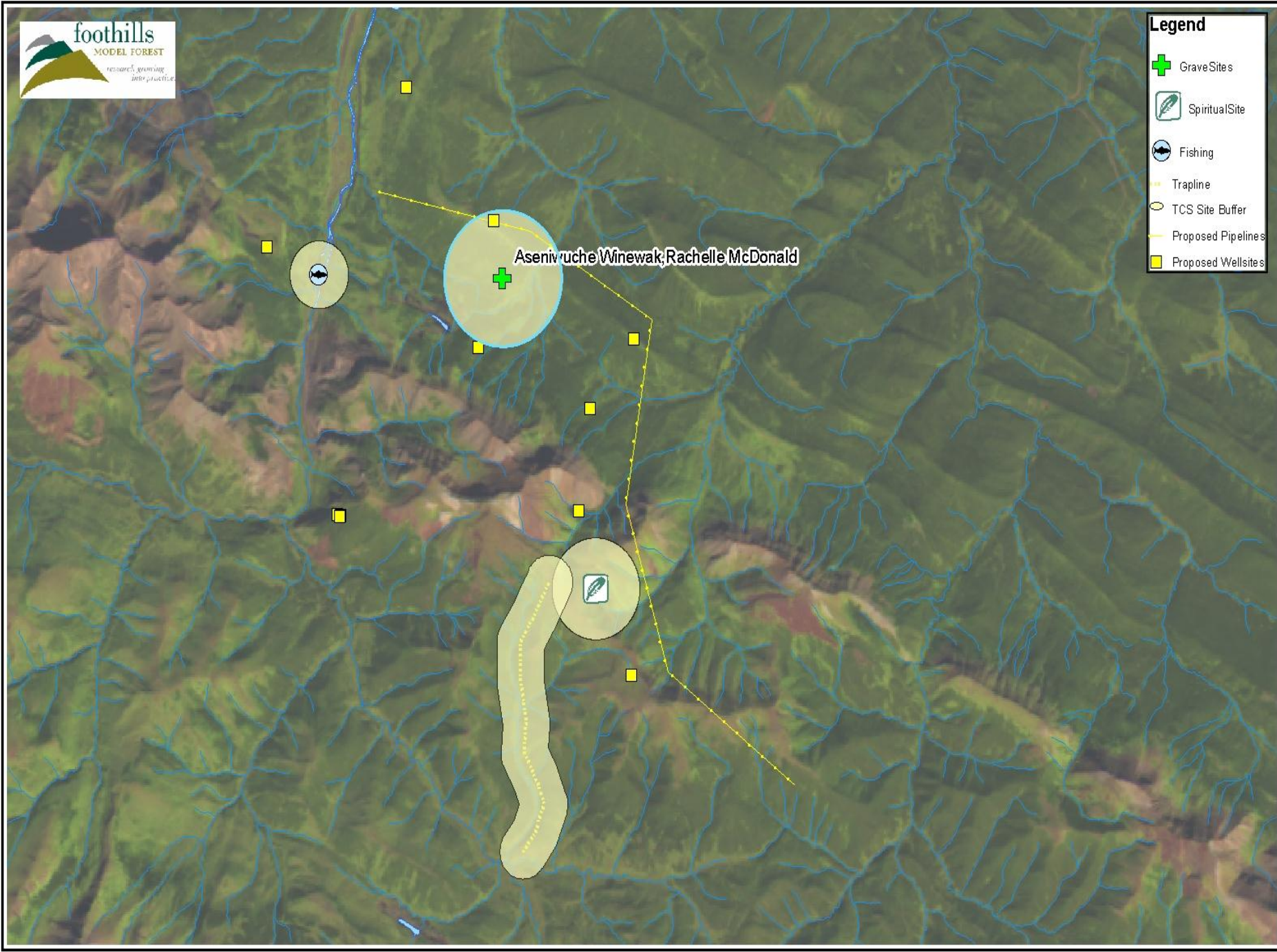


**Legend**

- GraveSites
- SpiritualSite
- Fishing
- Trapline
- TCS Site Buffer
- Proposed Pipelines
- Proposed Wellsites



- Legend**
- GraveSites
  - SpiritualSite
  - Fishing
  - Trapline
  - TCS Site Buffer
  - Proposed Pipelines
  - Proposed Wellsites



Asenivruche Winewak, Rachelle McDonald

# Referral Process Pilot Reports

*Planned Harvest Blocks in Conflict with Traditional Use Sites  
Submitted to the Foothills Model Forest by Hinton Wood Products as HWP\_AOP\_2006  
Report For Industry Representative*

**Block/Location ID:** 5-009-0038     **Planned Harvest Date:** 15-Jul-06

**Community Affected:** Foothills Ojibway Society

<b>Contact:</b> Rita Whitford	<b>Mailing Address:</b>
<b>Phone:</b> (780)865-1865	Box 6395
<b>Fax:</b> (780)865-7540	Hinton
<b>Email:</b> tos1865@telus.net	Alberta T7V 1V7

**Community Affected:** Nakowinewak Nation

<b>Contact:</b> Jean Whitehorse	<b>Mailing Address:</b>
<b>Phone:</b> (780)865-4600	Box 6116
<b>Fax:</b> (780)865-5900	Hinton
<b>Email:</b> nakowinewak@telus.net	Alberta T7V 1X5

**Block/Location ID:** 5-009-0043     **Planned Harvest Date:** 15-Oct-06

**Community Affected:** Foothills Ojibway Society

<b>Contact:</b> Rita Whitford	<b>Mailing Address:</b>
<b>Phone:</b> (780)865-1865	Box 6395
<b>Fax:</b> (780)865-7540	Hinton
<b>Email:</b> tos1865@telus.net	Alberta T7V 1V7

**Block/Location ID:** 5-009-0070     **Planned Harvest Date:** 15-Jul-06

**Community Affected:** Nakowinewak Nation

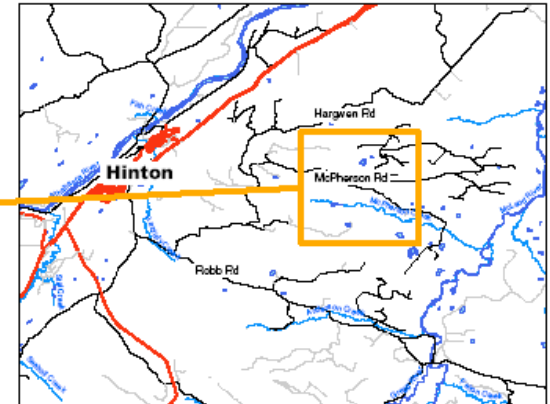
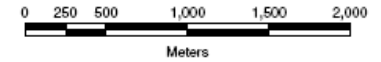
<b>Contact:</b> Jean Whitehorse	<b>Mailing Address:</b>
<b>Phone:</b> (780)865-4600	Box 6116
<b>Fax:</b> (780)865-5900	Hinton
<b>Email:</b> nakowinewak@telus.net	Alberta T7V 1X5

*Pilot Study  
Draft*

Page 1 of 1



**Area of Proposed  
Shell Development  
Twp 051 Rge 23 W5M**



Prepared For the Foothills Ojibway Society  
On July 12, 2006  
By Melissa Pattison



# The FMF Advantage

- Coordinated
- Co-operation
- One window information
- Decreases uncertainty
- Holistic approach with Aboriginal communities





# The FMF Advantage

- Is client focused and knowledge based
- Builds trust
- Right people are involved
- Nurture positive relationships
- Efficient



# The FMF Advantage

- A pilot area coordinated by a non-governmental entity (transferability built-in)
- Network of partners committed to trying an alternative on a pilot basis
- Non-derogation of Rights
- Recognized research body overseeing process
- Presence of contentious and rewarding discussions amongst partners



# The FMF Advantage

- Act as a Champion
- Has the administrative capacity
- Has research expertise
- Deals with community proscription against “making deals with the ‘little government’”
- Established network of researchers, gov’t and industry



# Future Directions

## -Short Term-

- Complete community TCS's
- Continue referral process pilots
- Continue training communities
- Fully automate for confidential on-line access
- Accessing additional resources to complete



# Future Directions

## -Mid term-

- Interface with government regulatory processes
- Enhance community management efforts
- Explore and develop self-sufficiency
- Explore integrating TEK into FtMF



# Future Directions

## -Long term-

- Self-sufficiency
- Enhance community management functions
- Transferring process to other regions
- Working examples of TEK and Sustainable Resource Management



# AIP Team

## Aboriginal Partners

**Foothills Ojibway Society (Non-status FN)**

**Aseniwuche Winewak (Non-status FN)**

**Nakcowinewak (Non-status FN)**

**Sunchild First Nation (Status FN)**

**Bighorn Stoney First Nation (Status FN)**



# AIP Team

## Government Partners

**Alberta Sustainable Resource Development  
Alberta Aboriginal And Northern Affairs  
Canadian Forest Service  
Jasper National Park**



# AIP Team

## Industry Partners

**West Fraser Mills Ltd.**

**PetroCanada**

**Talisman**

**Canadian Association of Petroleum Producers**

**Coal Valley Resources**

# Acknowledgements

Industry Partners and Clients – West Fraser Mills, Coal Valley Resources, Petrocanada, Talisman, Shell, Suncor and CAPP

Government – AB SRD, AAND, CFS, Jasper

Foothills Model Forest Staff – Don Podlubny, Melissa Pattison, Janice Makokis, Christian Weik, Sherri Fraser

Aboriginal Community – Elders; SFN, FOS, AWN, NN, BSFN

Consultants/professionals – Terry Garvin, Bob Phillips





[www.fmf.ab.ca](http://www.fmf.ab.ca)