



Jim Dinning Meeting – May 23rd, 2006

Agenda

What's in it for you ?

- Introduction to an organization that provides tools for sustainable forest land management based on “good science”.
 - Tools developed through applied research based on meeting the needs of a ‘community’ of partners.
 - Tools applicable to Alberta, Canada and internationally.

What we would appreciate from you ?

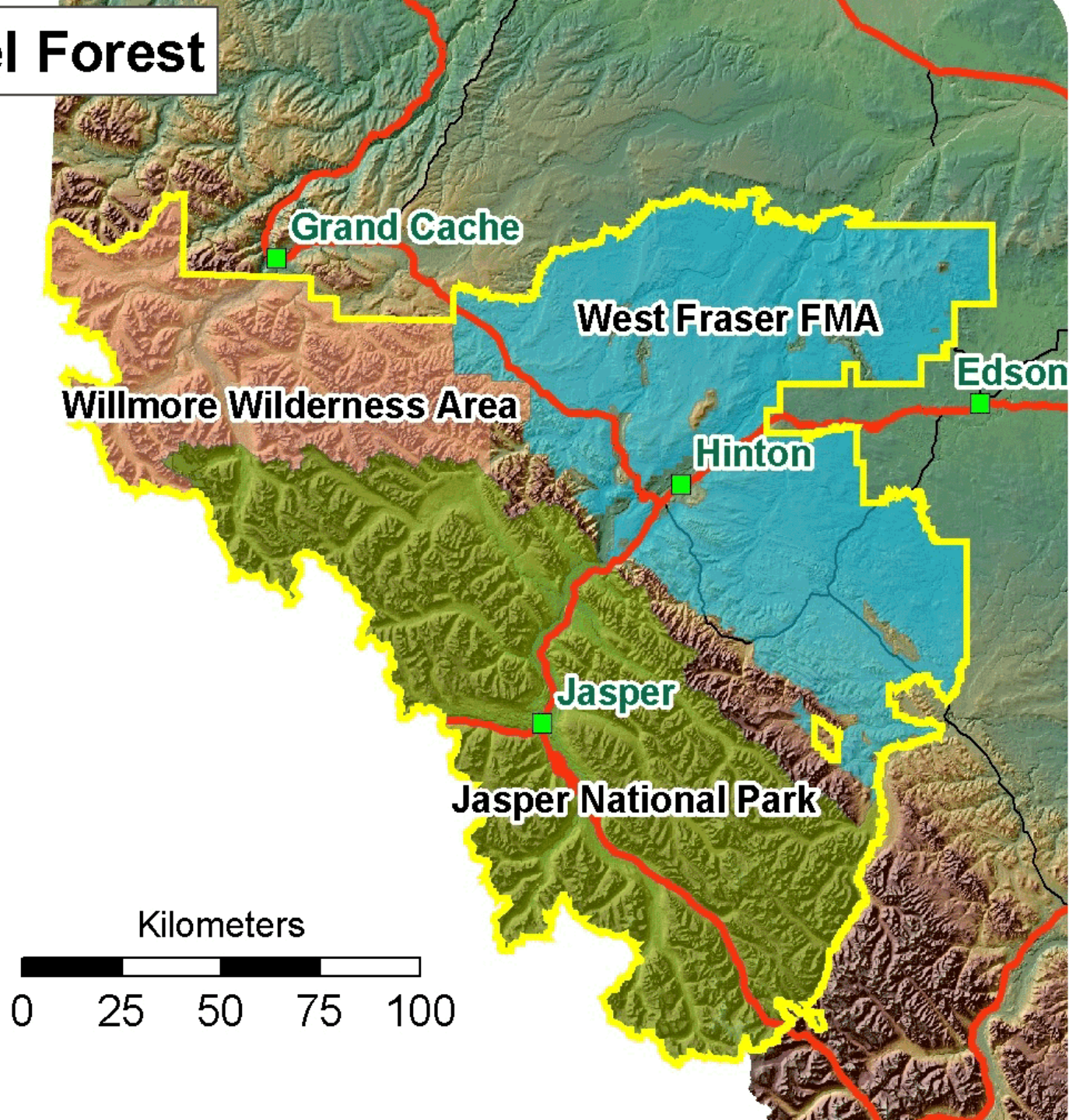
- Exposure to a larger ‘community’ as well as policy makers.

Foothills Model Forest

- Strong community and land based partnership
- Not for profit corporation with strong governance
- Robust organization
- Relevant 'applied' research
- Transferring knowledge

“ where research makes a difference “

Foothills Model Forest



Sponsoring Partners



Natural Resources
Canada

Ressources naturelles
Canada



Parks
Canada

Parcs
Canada

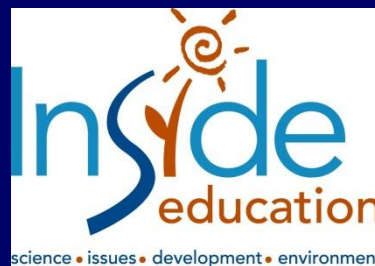
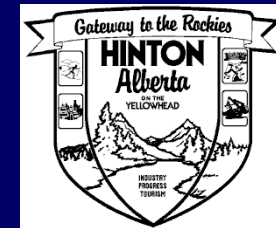


Contribute \$1,000,000/year.

Leverage a further \$3,400,000/year.



Partners Cont.



What do we do ?

Core Programs



FireSmart – ForestWise

Grizzly Bear Research

Local Level Indicators

Natural Disturbance

Fish & Watershed

Aboriginal Involvement

Social Sciences

Adaptive Forest
Management

Cmn. & Extension

GIS

Grizzly Bear



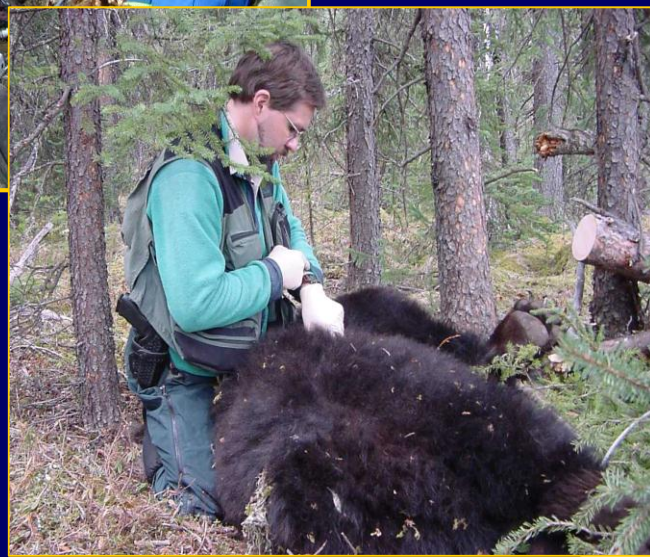
Grizzly Bear

The background image is a scenic landscape. In the far background, there are several jagged mountain peaks covered in patches of snow under a clear blue sky. Below the mountains is a dense line of dark green coniferous trees. In the middle ground, there is a wide, flat meadow with vibrant green grass. In the foreground, a calm river reflects the surrounding scenery. On the right side of the river, a grizzly bear is partially visible, standing in the water. Its reflection is clearly seen in the still water.

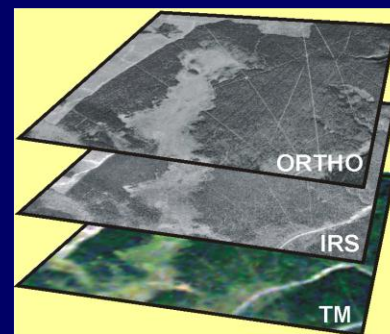
What are you doing to ensure the survival of grizzly bears in Alberta ?

Loss of habitat from industrial development is causing their decline.

Bear Research



Remote Sensing – Satellite Technology



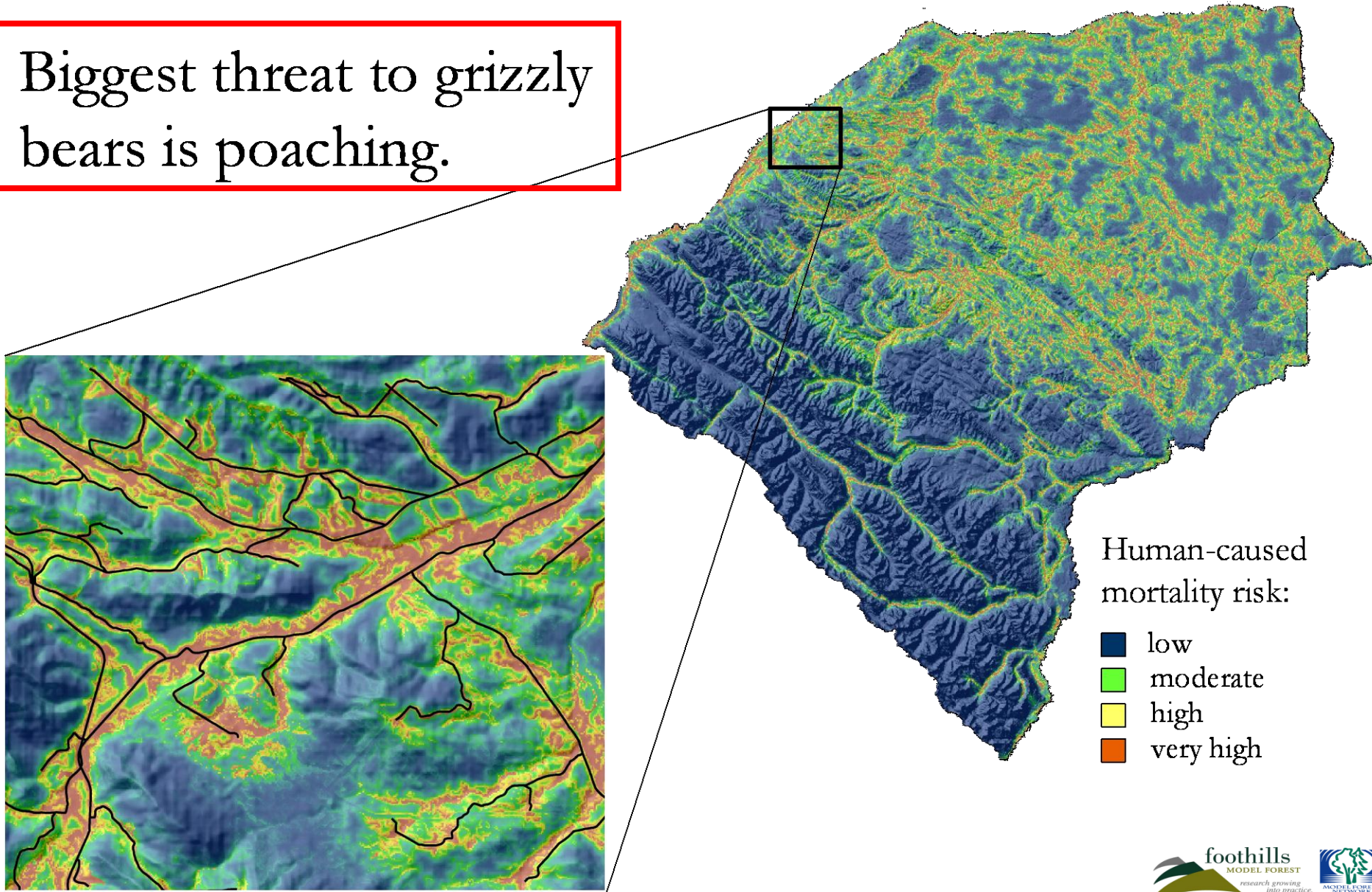
- Closed conifer
- Closed deciduous
- Mixed forest
- Open conifer
- Open deciduous
- Alpine
- Herbaceous < 1800m
- Herbaceous Reclamation
- Shrub
- Wet Open
- Wet Treed
- Rock
- Snow
- Shadow
- Water
- Road / Rail line
- Urban
- Recent cut
- Cut 3-12 yrs.
- Recent burn



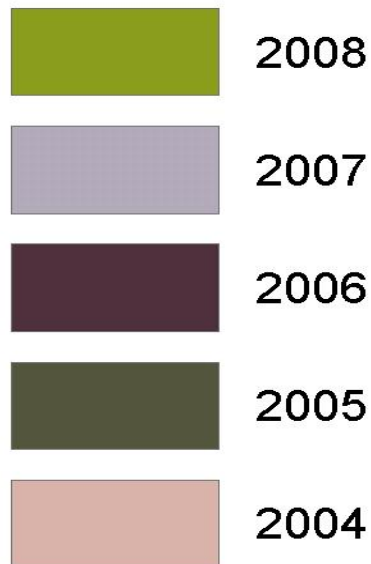
TOOLS TO GUIDE PLANNING & PRACTICE

Resource Selection Function Models

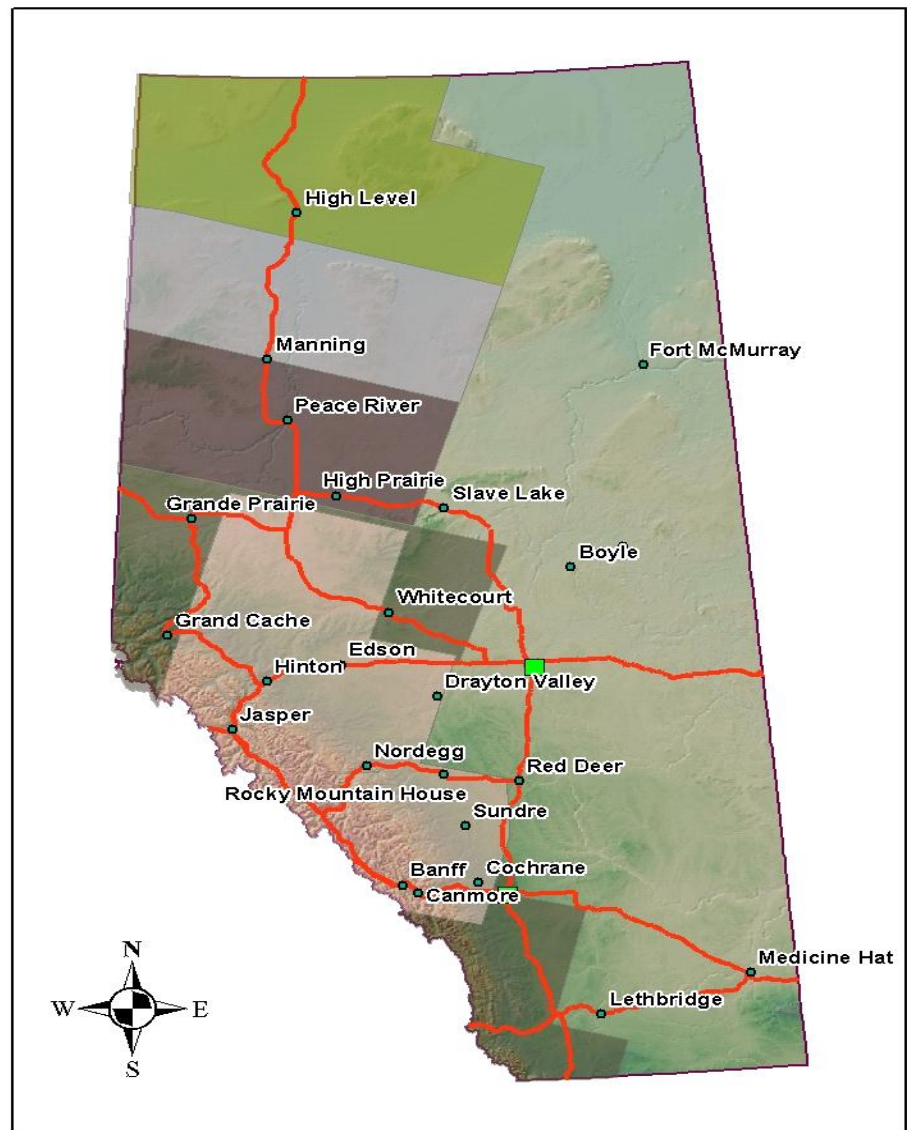
Biggest threat to grizzly bears is poaching.



Grizzly Bear Project Habitat Mapping Schedule



Drawn By: J. Cranston
Date Drawn: Nov. 15, 2005



**RSF Models Used in 75% of Forest
Management Areas.**

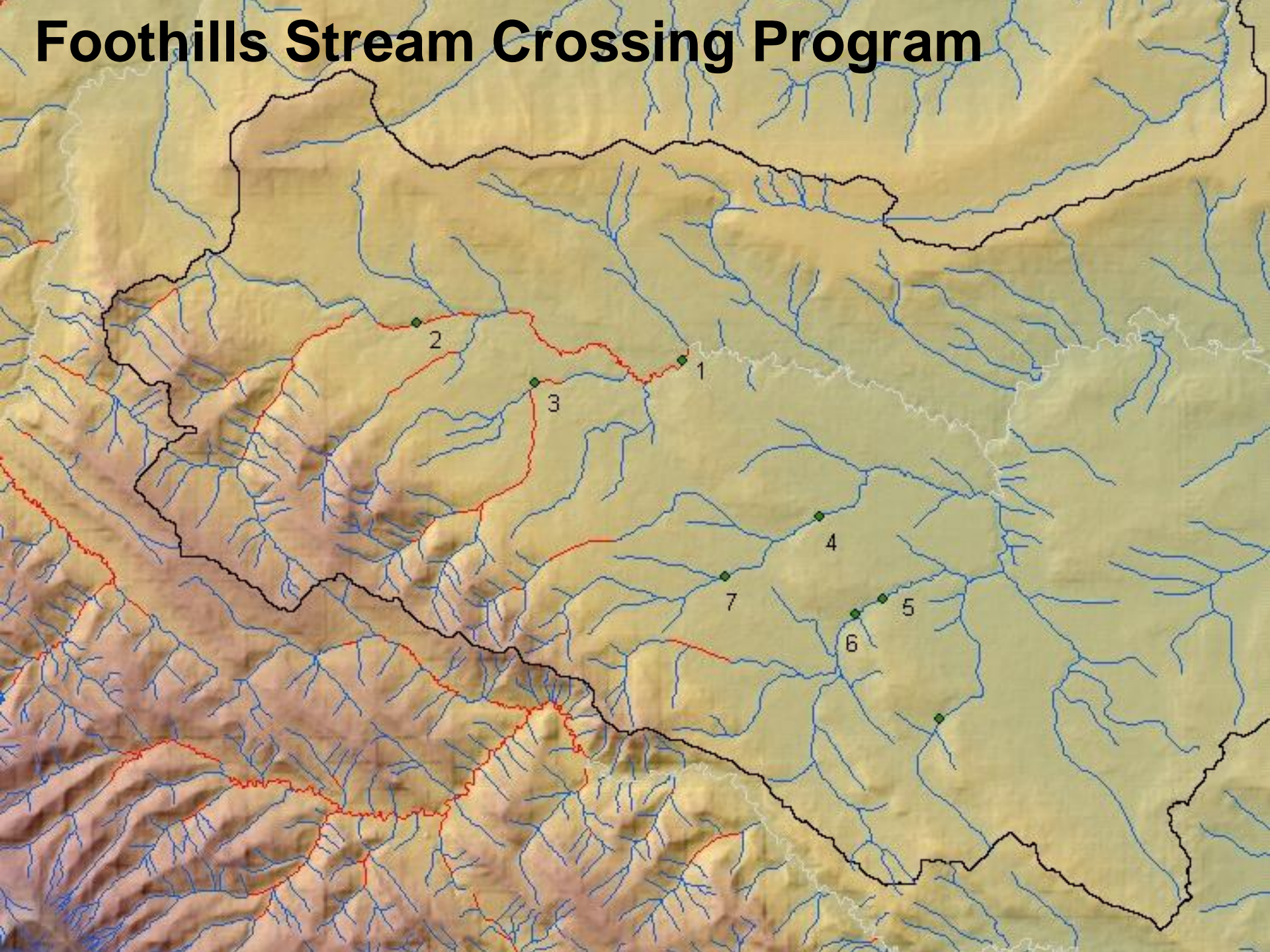




**What are you doing to
preserve water quantity and
quality in Alberta ?**



Foothills Stream Crossing Program





Department of Fisheries and Oceans keen on this program being replicated across the Province of Alberta, perhaps the Prairies.



How will you ensure that Aboriginal interests are respected on the landscape.....most importantly with their endorsement ?



FtMF Aboriginal Program

Legend

- GraveSites
- SpiritualSite
- Fishing
- Trapline
- Proposed Pipelines
- Proposed Wellsites



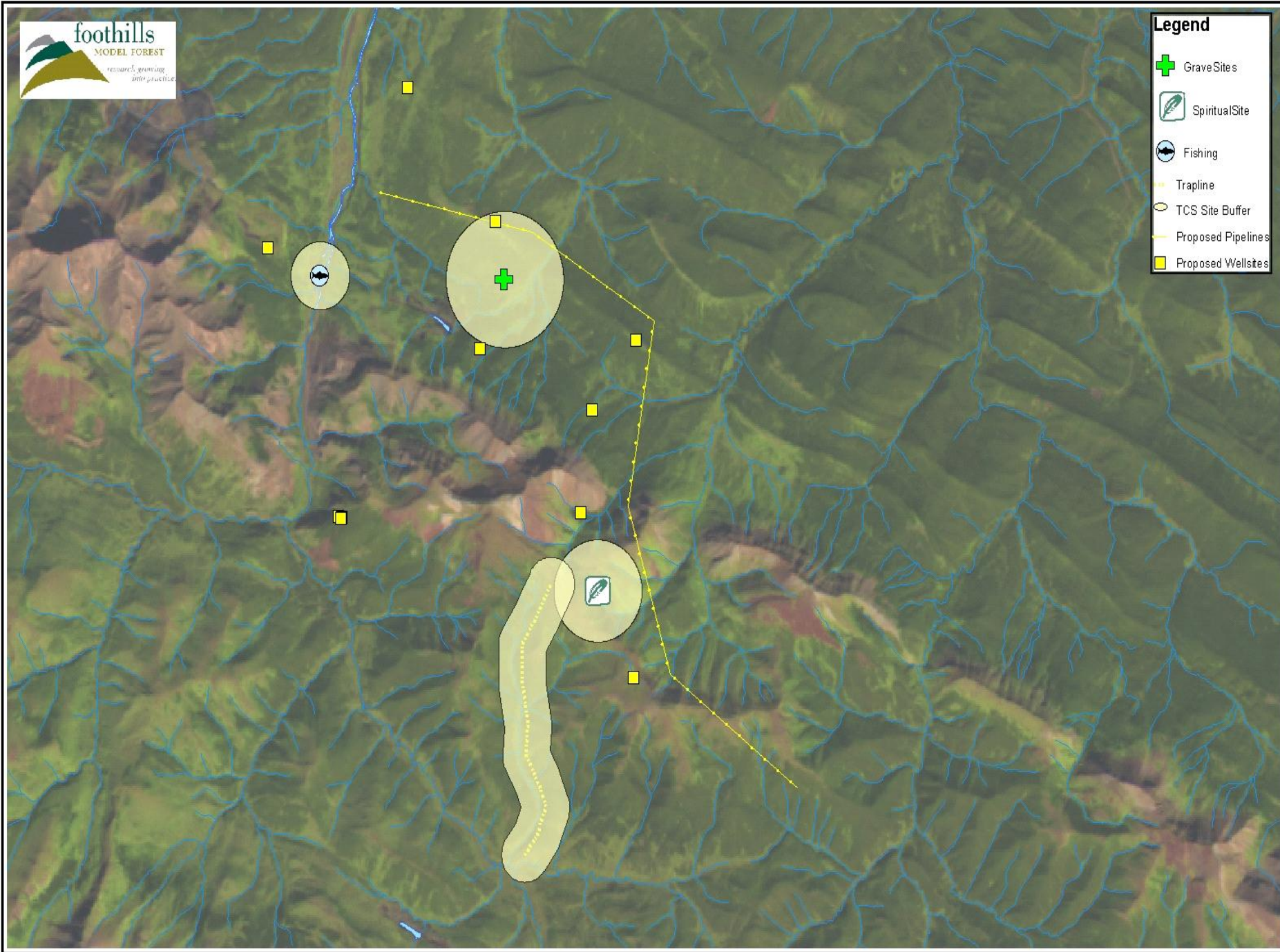
Legend

- GraveSites
- SpiritualSite
- Fishing
- Trapline
- Proposed Pipelines
- Proposed Wellsites



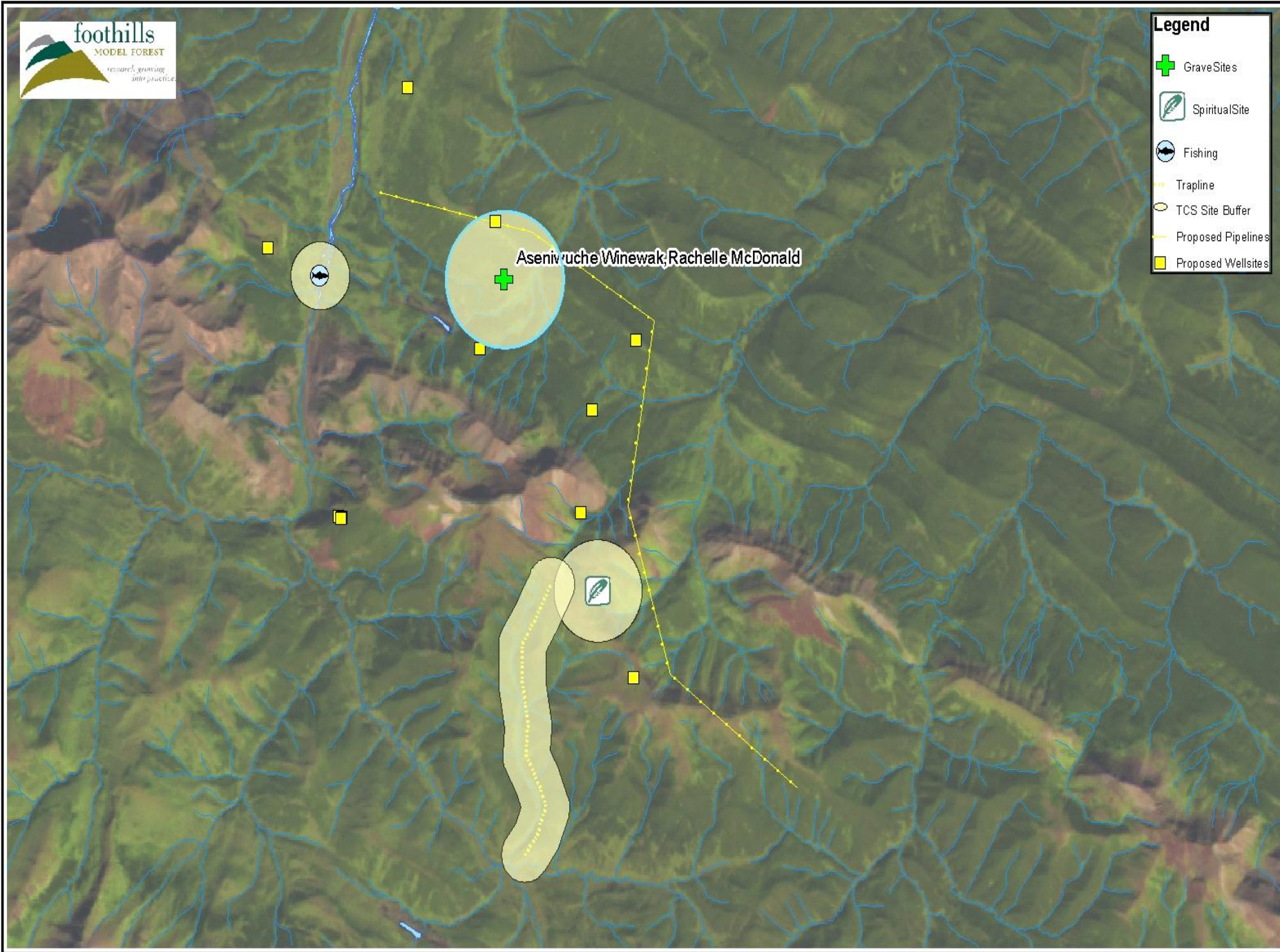
Legend

- Grave Sites
- Spiritual Site
- Fishing
- Trapline
- TCS Site Buffer
- Proposed Pipelines
- Proposed Wellsites



Legend


- Grave Sites
- Spiritual Site
- Fishing
- Trapline
- TCS Site Buffer
- Proposed Pipelines
- Proposed Wellsites



**Research and planning is
good but Prove it !**



Hwy 40 North Demonstration Project

- 
- 70 000 hectares**
 - Four jurisdictions**
 - Integrating natural disturbance research into ONE operational plan**

Hwy 40 North Demonstration Project



NATURAL DISTURBANCE PROGRAM

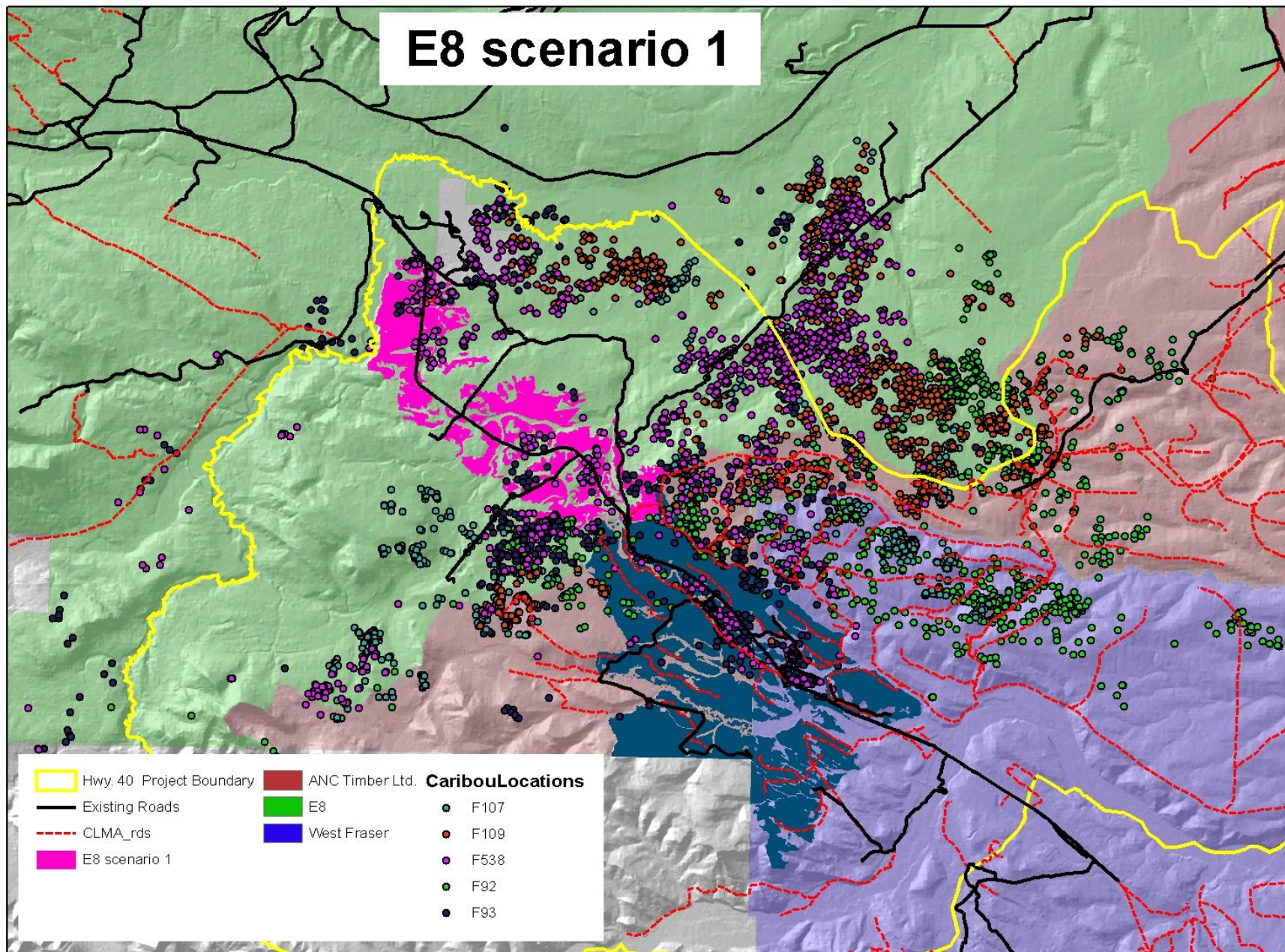


Jasper National Park, 1915



1997

E8 scenario 1



**FtMF Natural Disturbance
research used on 90% of
Alberta's Forest
Management Areas, and
influences Saskatchewan
forest policy.**



Extension

Beyond boundaries.....

Caribou Landscape Management Association



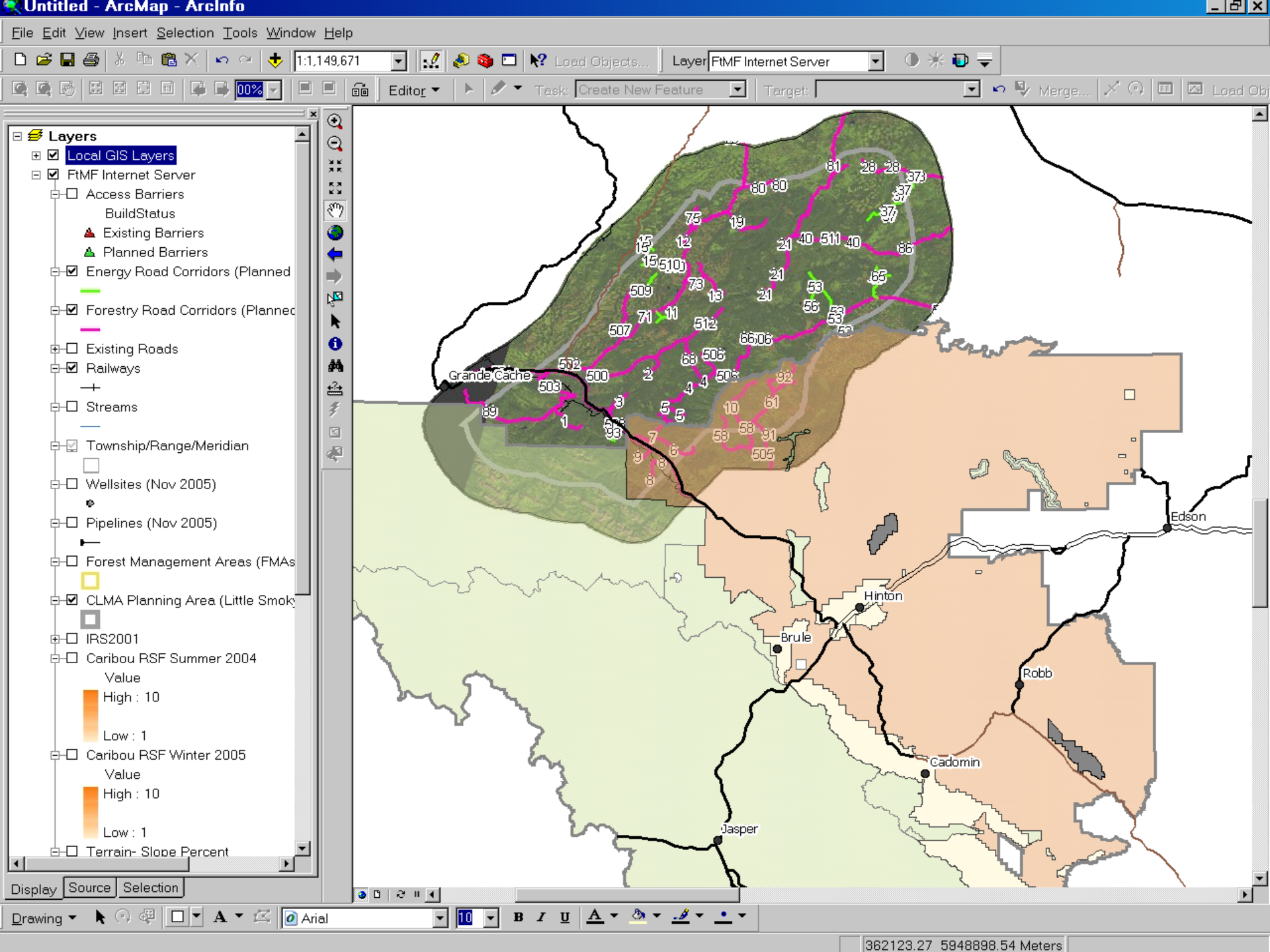
Roads and Caribou



Predation



Yukon Government
Photos





- **Relevant**

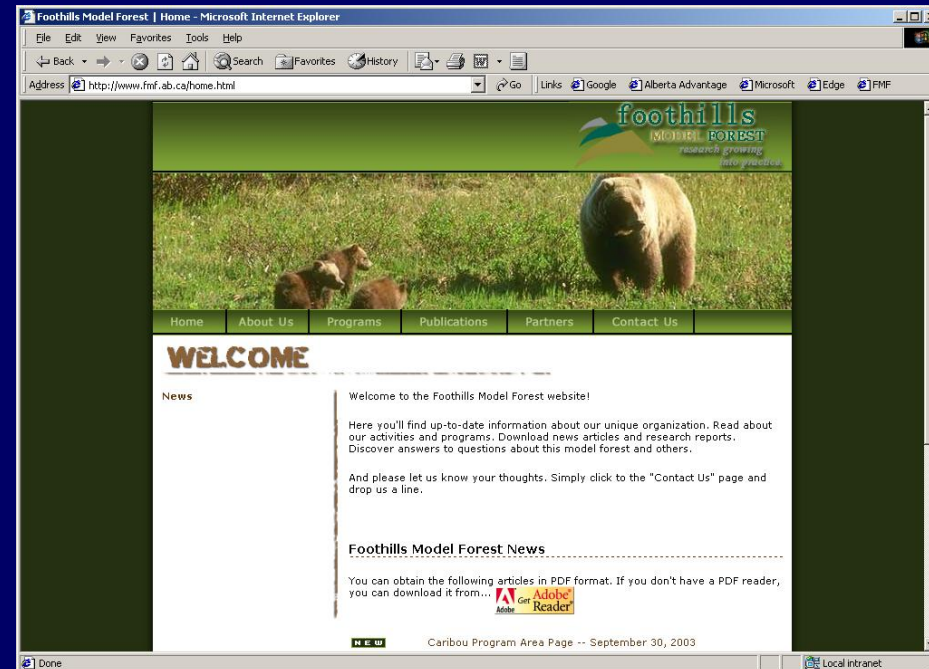
- **Robust**

- **Effective**

Communications & Knowledge Transfer

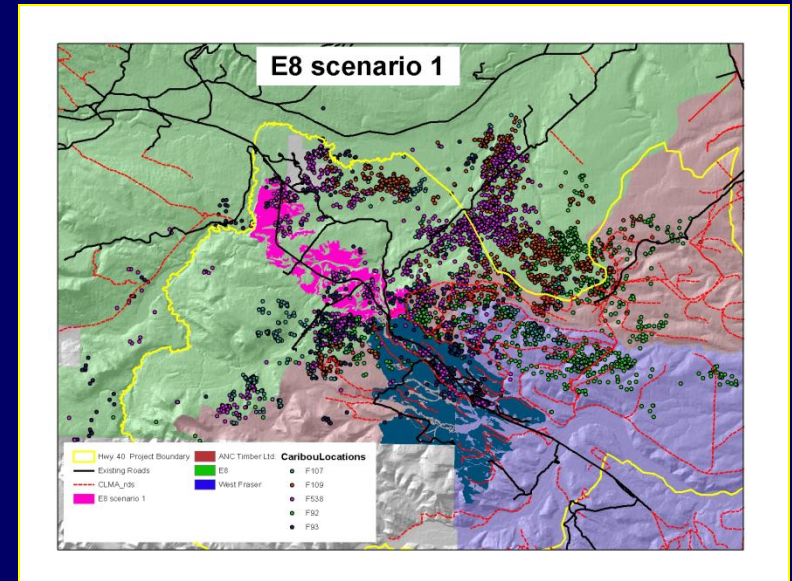


EDMONTON JOURNAL



Why the Resource Management Executive Series?

Planning



Practice



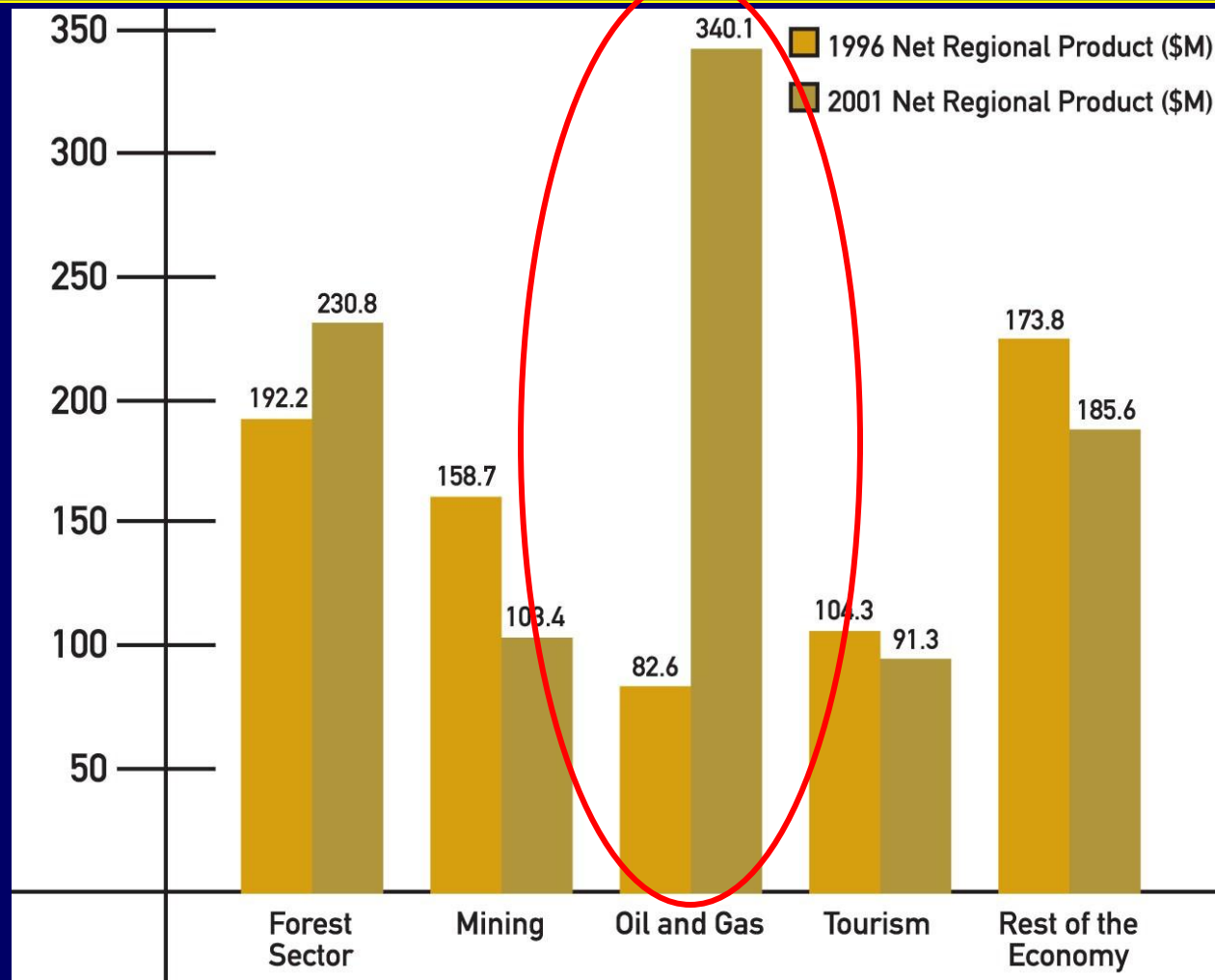
Why the Resource Management Executive Series?

Policy




**Resource
Management
Executive Series**

Oil and Gas Activity in FtMF



Between 1996 and 2001 oil and gas contribution to the Foothills Model Forest net regional product **quadrupled** between 1996 and 2001.

We Need You



Build Bridges: Influence and
contacts with oil and gas sector

Your Involvement Makes Sense

1. Supports CWF Natural Capital Project

“...draw attention to the importance of natural capital for public policy, and to argue for the greater recognition of natural capital within public policy discussions in the West.”

- Website of Canada West Foundation

Your Involvement Makes Sense

2. Support of rural, resource-based Alberta



Your Involvement Makes Sense

3. Better Informed Land Management Policy



What We'd Like

- Continued support for the Foothills Model Forest.
- Champion of the *Resource Management Executive Series*