

Luscar and Gregg River Mines Land Management Planning Initiative

Approach to End Land Use Planning

March 12, 2010

Hinton, Alberta



Overview of the Presentation

- Background
- Regulatory and mining process
- Site tour
- End land use planning process
- Consultation and public engagement process
- Scenario development
- Future of end land use planning
- Policy implications

Main focus

- Focus on the planning approach taken and the challenges and less on the outcome of the planning initiative
- General direction
- It is still an on-going process
- Final draft plan – Mid 2010

Challenges

- Motorized Recreation – wants more quad trails & snowmobiling
- Non-Motoried Recreation – Hiking, photography, mountain biking
- Hunting – want to see hunting taking place
- Outfitting/tourism – More opportunities for outfitting & tourism
- Conservation – low impact, wildlife sanctuary
- Research – Area land for research
- Interpretive - Interpretive centre
- Resource interests – There are still resources in the area
- Coal mines – spent time and resource on reclamation; leave a legacy behind; do not want to see it ruined.
- Planning initiative – balance between all these values, opportunities, constraints and decide the right thing for the land

Other resource interests

- Commercial forestry
- Oil and gas
- Coal rights

Challenge

- Piece of pie approach
- Wants bigger piece
- Not a piece of pie approach
- Scoping exercise – Values, opportunities and constraints
- Vision – “The plan will conserve wildlife and protect watershed”

Regulatory process

- Sub surface rights
- Permit: Conceptual plan - ERCB
- Environmental Impact Assessment – AENV
- License: More detailed plan for pits, dumps, haul road, reclamation plan etc–AENV/ERCB
- Mineral Surface Lease (MSL): Surface rights - ASRD

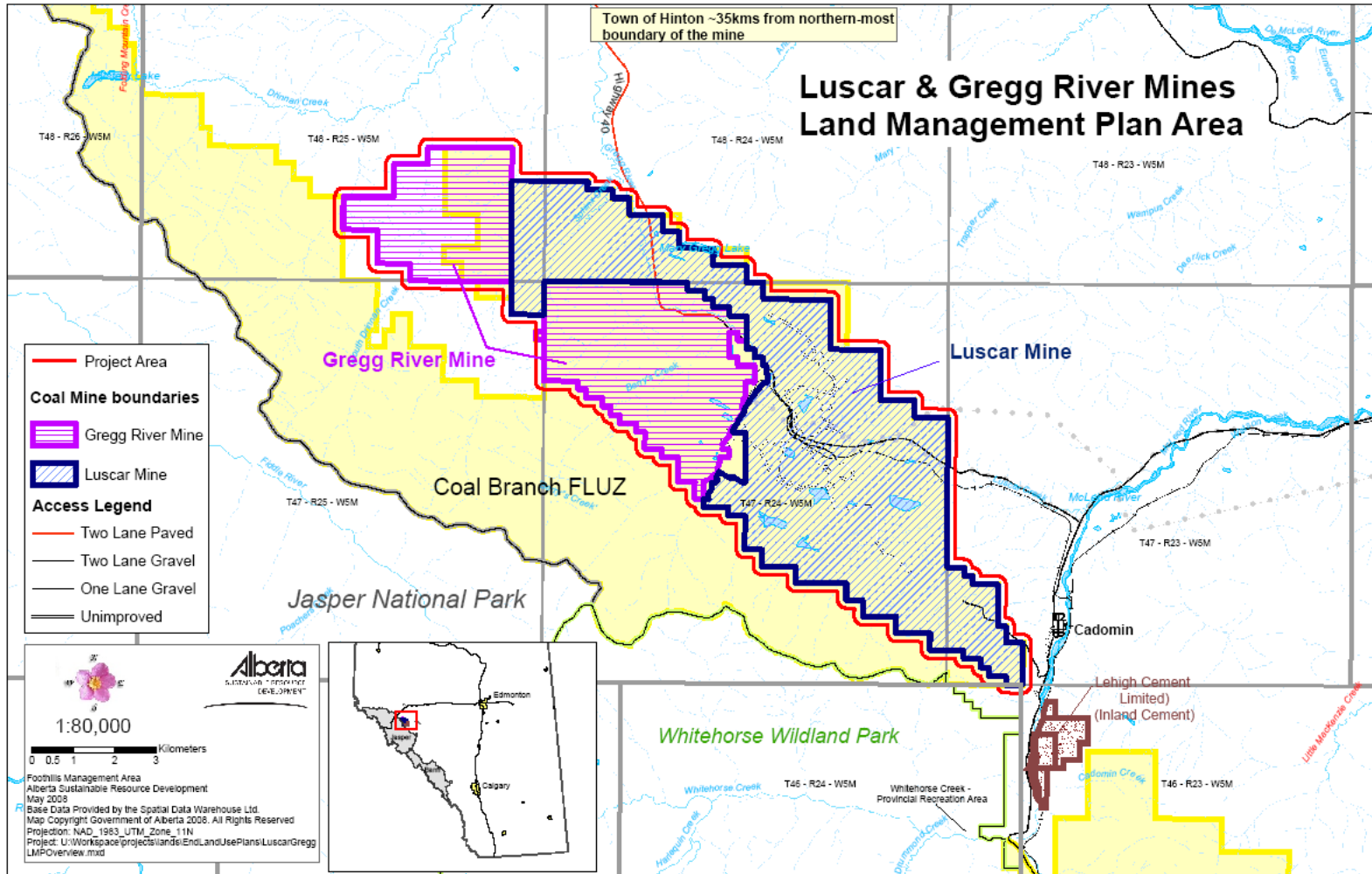
Mining process

- Land clearing
- Soil salvage
- Rocks removal/rock dump
- Coal mining
- Reclamation – C & R Plan
- Reclamation certification

Site Tour

- Tour of the area
- Before, during and after mining

Project Area



Luscar and Gregg River Mines

Current status

- Total area – About 7100 ha.
- Gregg River Mine:
 - Disturbed area: 1252 ha.
 - Almost all reclaimed
- Luscar Mine:
 - Disturbed area – 2038 ha.
 - About 50% reclamation completed
 - Reclamation will continue for another decade

Pre mining landscape



Pre mining landscape



Pre mining landscape



Coal Mining



Coal Mining



Reclamation



Reclamation

- Objective – watershed protection and wildlife habitat
- Waste rock dump
- Soil placement – 30 cm in average
- Contouring – slopes 27 degree
- Re-vegetation – grass/tree
- End pit lake/wet land

Reclaimed Landscape



Reclaimed landscape



Reclaimed Land with Tree Island



End Pit Lake



End Pit Lake



Bighorn Sheep



Bighorn Sheep



Elk herd



Grizzly bear



Poaching



Current status of wildlife population

- Wildlife survey by Bighorn Wildlife Technologies Ltd. in 2008
- Bighorn Sheep – 1083
- Elk – 317
- Mule Deer -129
- Coyote, Grey wolf, Red fox, black bear, Grizzly bear, Cougar, Hoary Marmot and many birds

Luscar and Gregg River Mines Land Management Plan

- Special interest group lobby for use of the area
- Discussion on what to do with the land
- Have plan in place
- Decision to start the planning process – started in 2007
- Process is backward

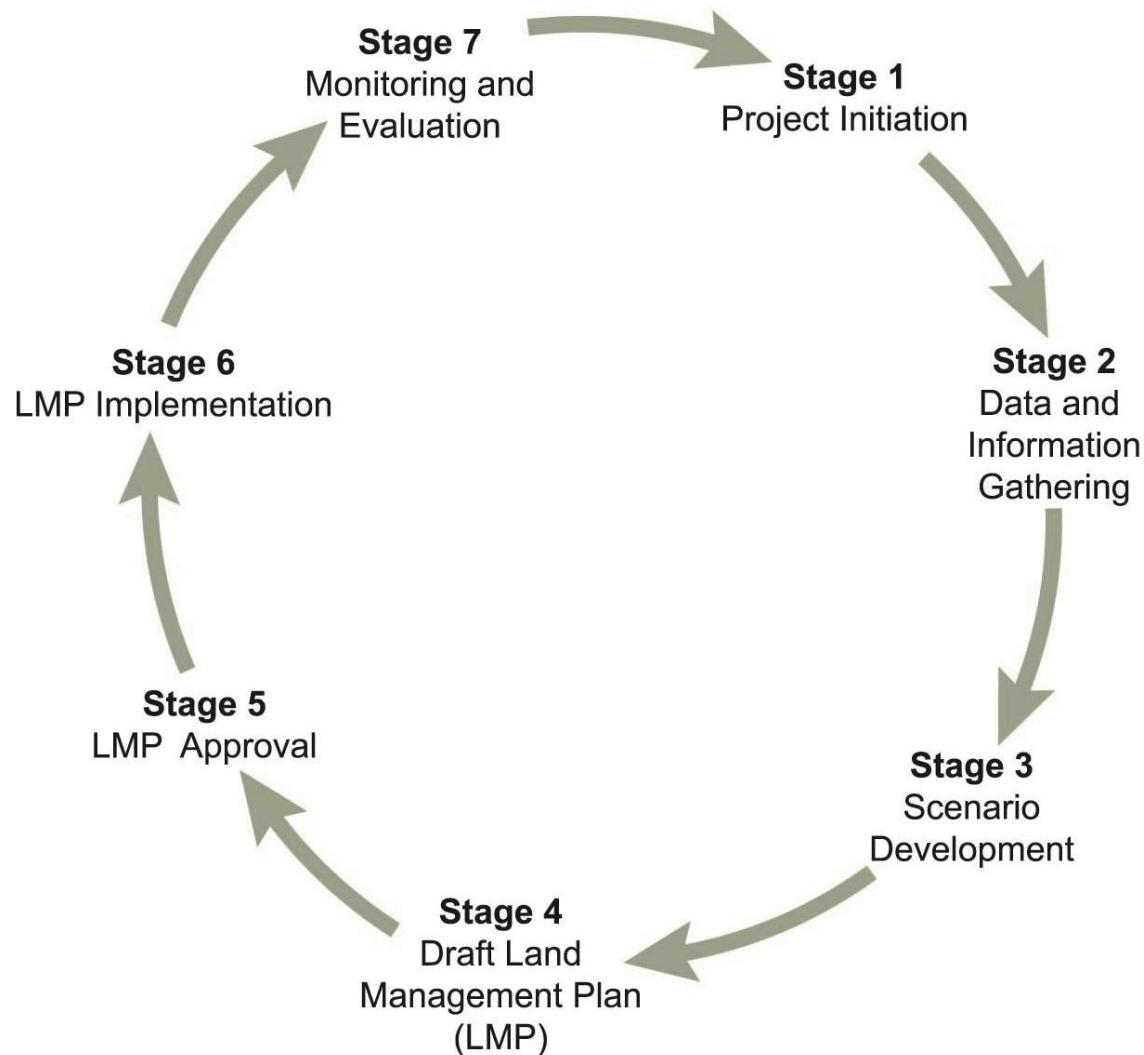
Partnership

- Alberta Sustainable Resource Development (ASRD), in partnership with Teck Coal Ltd. and Coal Valley Resources Inc. is developing a Land Management Plan (LMP)

Purpose of the Plan

- Provide the mining companies, government and major stakeholders with clear and consistent direction regarding land use both before and after certification

Planning Cycle



Working Group

- Teck Coal Ltd
- Coal Valley Resource Inc.
- Yellowhead County
- West Fraser
- Jasper National Park
- Alberta Environment
- Energy Resources Conservation Board (ERCB)
- Alberta Tourism, Parks and Recreation (TPR)
- Alberta Energy
- Alberta Sustainable Resources Development

Planning, Consultation and Decision Making Process

- STAGE I – Project Initiation: WG formation/TOR
- STAGE II - Data and Information gathering: WG/S
- STAGE III – Scenario Development: Coarse/Preferred Scenario (WG, Stakeholders)
- STAGE IV – Draft LMP: Based on preferred scenario draft LMP, Inform/seek input from Stakeholder and public
- Stage V – LMP approval: WG/ASRD/Communicate
- Stage VI – Plan Implementation:
 - Implementation Strategy/Agreements/Roles & responsibilities
 - Plan Implementation
- STAGE VII – Monitoring and Evaluation:

Consultation and Public Engagement Process

- Who has been engaged?
 - Municipalities (YC and TOH)
 - Disposition Holders in the area
 - Aboriginal groups
 - Recreationists, conservationist and commercial operators
 - Surrounding communities

Focus Group

- Whitehorse Wildland Park Steward
- Cadomin EPA
- Athabasca Bioregional Society
- Alpine Club of Canada
- Cadomin/Hinton residents
- Fed. of AB Naturalist
- Town of Hinton
- Hinton/Edson ATV
- AB OHV
- Equestrian
- Edson Snwmobile
- AB Outfitters Association
- Eco-tourism/commercial
- AB Trappers Association
- Foundation of North American Wild Sheep
- Alberta Fish & Game
- Hinton/Edson F & G
- Feb of Northern AB Wild Sheep hunters
- MLA

Focus Group Sessions and Public Open House Session

- Focus group
- Field orientation
- Four focused discussion on:
 - Conservation/stewardship/non motorized
 - Motorized Recreation
 - Commercial operators (outfitters, tourism etc
 - Hunting and wildlife management
- Three focus group sessions
- Public open house

Scenarios Development

- “Scenario” – work-in-progress, subject to evolution and refinement
- Preferred scenarios reflects best efforts at integrating all interests and values within the framework of the preconditions (guiding principles & criteria) and deciding what is best for the land
- Compatibility, incompatibility & mitigation measures
- More geographically specific prescriptions will emerge at later stages

Preconditions

- Adhere to, or consider land and resource management legislation, policies and plans
 - Public Lands Act, EPEA, C & R regulations, Eastern Slopes Policy, IRP, Access Management Plan, FLUZ
- LUF/Upper Athabasca Regional Plan (UARP)
- Reclamation objectives
- Land use decisions are made by ASRD

Preferred Scenario



Goals, Objectives and Strategies Definitions

- Goals – Where we want to be (broad, general intensions, intangible, can't be validated)
- Objectives – Steps needed to get there (specific, precise, tangible, can be validated)
- Strategies – Approaches to achieve objectives (what and how)

Preferred Scenario (use map)

- Conserve wildlife and protect watershed
- Maintain existing 5 trails (Motorized & non-motorized)
- Opportunity for additional hiking trails
- Wildlife population management – habitat management, Relocation, hunting etc.
- Hunting only as a tool to manage population - health of the herd (only after assessment)
- Enhance education, communication and enforcement
- Research and interpretive opportunities

Compatibility of Recreational, Commercial and Industrial activities

- Hiking – Restricted
- Wildlife and landscape viewing – Restricted
- Photography – Restricted
- OHV – Restricted
- Cross country – Restricted
- Sledding - Restricted
- Overnight camping – Prohibited
- Mountain biking – Restricted
- Equestrian - Restricted

Compatibility of Recreational, Commercial and Industrial activities

- Commercial tourism – Restricted
- Hunting – Restricted
- Angling in short term – Restricted
- Angling in long-term – Permitted
- Domestic Grazing – Prohibited
- Dogs – Prohibited
- Firearms – Restricted
- Research and interpretive opportunities - permitted

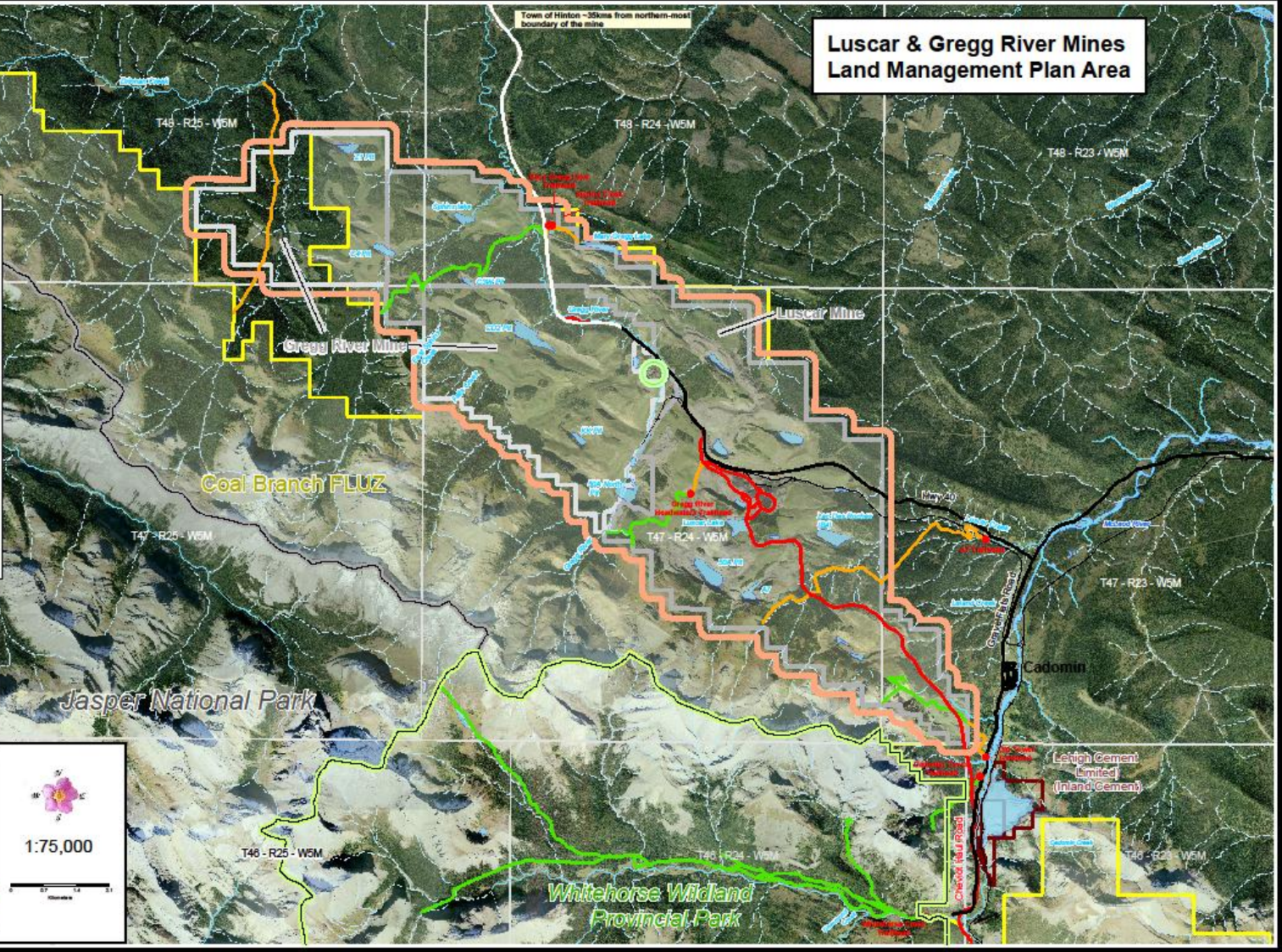
Luscar & Gregg River Mines Land Management Plan Area

- Project Area
- Forest Land Use Zone
- Jasper National Park
- Whitehorse Wildland Provincial Park
- Coal Mine boundaries**
- Gregg River Mine
- Luscar Mine
- Access Legend**
- Two Lane Paved
- Two Lane Gravel
- Haul Road
- OHV Trail
- Walking/Equestrian Trail
- Trail Head
- Potential site for Research/Interpretive Centre



1:75,000
 Scale
 0 1 2 3 4 5
 Kilometres

2008 Government of Alberta
 Government of Alberta
 Sustainable Resource Development



Research and Interpretive Centre

- Plan for a Research and Interpretive Centre
- MLA Robin Campbell working on the project
- Research and Interpretive Centre has to be aligned and integrated into the Land Management Plan

Planning Approach

- Several ways to approach the planning process
- Many different approaches in the past – pros and cons
- This planning process has pros and cons as well
- Comments on the draft plan or discuss and provide input to give direction for drafting the preferred scenario and the Plan

Policy Implications

- Luscar and Gregg River Mines LMP –backward
- Plan should be developed even before the mining takes place
- Outcome from this initiative will provide basis for changing regional and provincial policy directions or develop new ones
- Inform UARP
- Coal mines have agreed conceptually
- Process will be starting soon for other mine areas

QUESTIONS!

- For more information:
- <http://www.srd.alberta.ca/ManagingPrograms/Lands/Planning/Default.aspx>