

# Foothills Landscape Management Forum

## Berland Smoky Regional Access Development (RAD) Plan



### Deliverables

The primary deliverable of this project is the development of a RAD Plan. The plan will:

- validate the original primary access corridors identified in the 2008 approved IIAP,
- rationalize the need for secondary roads in the future (those coming off of primary corridors),
- identify whether the planned roads are required as permanent or temporary access,
- align pipeline routing.

The plan will not consider seasonal roads, those in use for less than 2 years, or in-block roads and access to well-heads.

As part of the planning process, the project will identify, evaluate and make recommendations on:

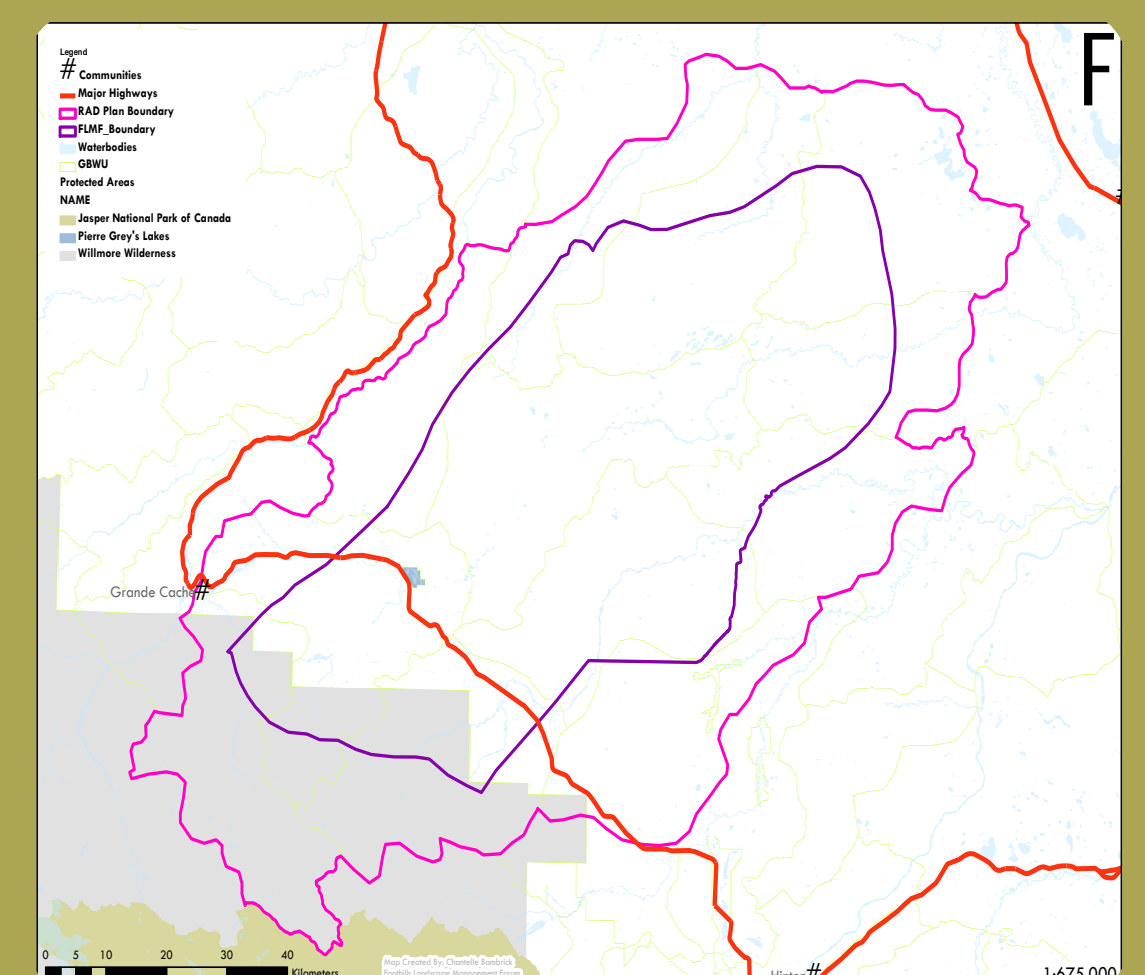
- integrated access management and mitigation strategies (e.g., gates, restoration) that can be used across a variety of planning processes and time horizons (i.e., DFMP, AOA, individual dispositions, etc.),
- risk assessment models,
- parameters required for computer modelling, simulation and scenario testing,
- data needed to support this planning, along with data security, compilation, maintenance, and storage needs,
- information and communication strategies for government, industry and other audiences,
- opportunities to improve/enhance the current SRD approval system for such plans,
- misalignments, operational conflicts (such as FMA vs IL 2003-23 road standards), and barriers to planning (e.g., other departments),
- monitoring and evaluation processes to assess plan implementation against targets for all new (as built) footprint.

For all of the above, the opportunities and challenges of the approaches selected will be documented to capture key learnings for future RAD planning efforts.

### Givens

The following will further direct this work:

- Resource development will continue to occur in the area.
- The Berland-Smoky Integrated Industrial Access Plan will guide industrial access to the area approved through IL2008-05.
- Resource tenure is not within the project scope.
- Most current data available will be used. Data collection is not within the scope of this project and completion of the work will not be delayed from expectations for imminent new information. However, new information will be addressed as it becomes available and plan reviews occur.
- The RAD Plan may require amendment to conform to the Upper Peace and Upper Athabasca Regional Plans.
- The RAD Plan, once approved, does not grant access to the area; current review and approval processes will be used.
- Integrated land management principles will be applied.
- The full scope of adaptive management (i.e., plan-do-check-adjust) is expected.



Foothills Research Institute is a leader in developing innovative science and knowledge for integrated resource management on the forest landscape through diverse and actively engaged partnerships.

The Foothills Research Institute landbase is located in west-central Alberta, and is based in the resource community of Hinton, some three hours west of Edmonton. It covers roughly 2.75 million hectare (27,500 square kilometres), and embodies Jasper National Park of Canada, the Willmore Wilderness Park, and the Forest Management Area of Hinton Wood Products, a Division of West Fraser Mills Ltd. It also includes some provincial "crown forest management units" and the Hinton Training Centre's Cache Percotte Training Forest. Within its boundaries are three forest areas—boreal, montane, and sub-alpine—and many forest uses including timber, petroleum, and coal extraction, tourism, and recreation.

We welcome inquiries: Box 6330 Hinton, Alberta Canada • T7V 1X6 • T: 780.865.8330 • F: 780.865.8331 • [foothillsresearchinstitute.ca](http://foothillsresearchinstitute.ca)

