

Foothills Stream Crossing Program

Foothills Research Institute

AGM

October 15, 2008

Edmonton, Alberta

Jerry Bauer, Program Manager, FSCP

Ngaio Baril, Program Coordinator, FSCP



Goal

- **“...to help companies and crossing owners manage stream crossings in the long term...”**



Objectives

- ❑ **Develop an industry-driven approach**
- ❑ **Establish a standardized stream crossing inspection process and protocols**
- ❑ **Establish a system to identify priorities for maintenance and replacement**
- ❑ **Improve the quality or performance of stream crossings**
- ❑ **Monitor results**



Current membership (crossing owners)

- ❑ **BP Canada**
- ❑ **CN (inactive)**
- ❑ **CNRL**
- ❑ **ConocoPhillips**
- ❑ **Devon**
- ❑ **Hinton Wood Products, West Fraser Mills**
- ❑ **Petro Canada**
- ❑ **Suncor Energy**
- ❑ **Talisman Energy**
- ❑ **Shell Canada (including Duvernay)**
 - **Anadarko**
 - **Burlington Resources**



Current membership (support)

- ❑ **Fisheries and Ocean Canada**
- ❑ **ASRD Public Land and Forests**
- ❑ **ASRD Fish and Wildlife**
- ❑ **Alberta Environment**
- ❑ **Foothills Research Institute**
- ❑ **Alberta Chamber of Resources**
- ❑ **Alberta Conservation Association**
- ❑ **Alberta Transportation**



Inspection priorities

- **Safety**
- **Water quality**
- **Fish passage**





Employee and Public Safety

: Foothills Model Forest

A person is kneeling in a grassy field, pouring water from a black bucket into a small stream. A white ruler is held vertically next to the bucket's opening to measure the water level. The water is cascading into the stream, creating white foam. The surrounding area is filled with green grass and various wildflowers, including purple and yellow ones.

Fish Passage

Photo credit Foothills Model Forest

Erosion and deleterious Substances



Overall Progress to Date

- ❑ **2005 – First official meeting; Developed and approved Stream Crossing Inspections Manual**
- ❑ **2006 – Completed just over 300 field inspections; summarized results for the owners**
- ❑ **2007 – Updated manual and developed a collaborative watershed management strategy for two basins to test cooperative remediation process**
- ❑ **2008 – Start work on two test basins; complete initial inspections; fish monitoring**



Update for 2008

- ❑ **Ongoing discussions with the regulators (DFO, SRD) to maintain support for program**
- ❑ **Ongoing discussions with non-members to join**
- ❑ **Completed all member crossing inspections in the FMA**
- ❑ **Crossing Inspections/Summary Reports**
- ❑ **New budget and work plan for 2009 (Dec of 2008)**
- ❑ **Developed a road maintenance program through WOLF and industrial partners**

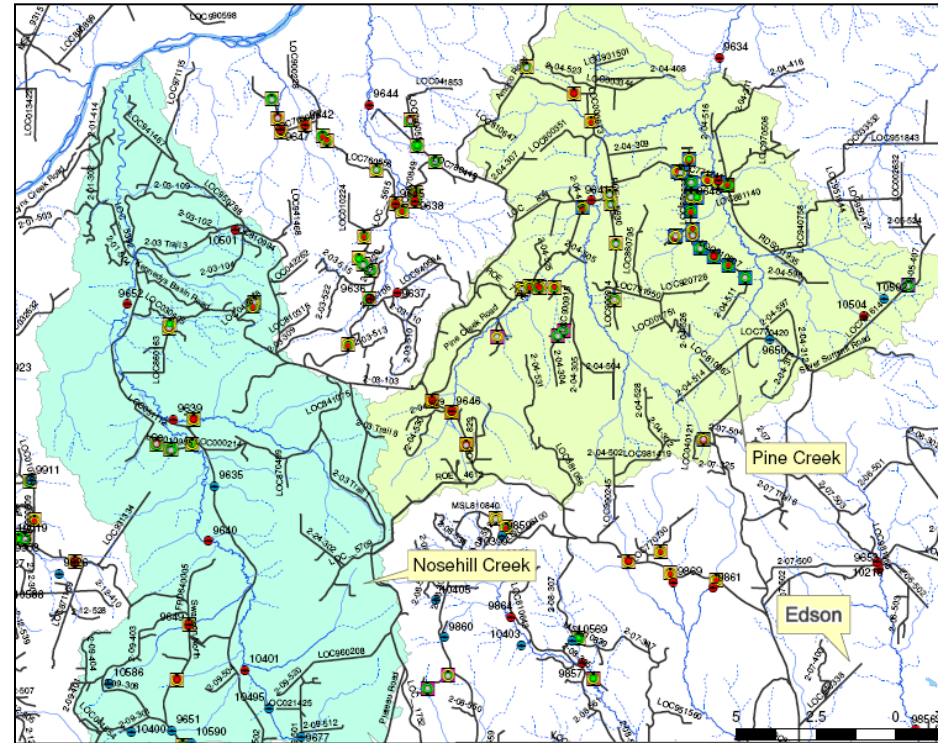


Road maintenance is a major issue



Update for 2008 Pilot Watersheds

- ▣ **Development of a collaborative approach to remediation on a watershed basis**
- ▣ **Navigable Waters Act and approval from Transport Canada**
- ▣ **Submitted remediation plan for Pine Creek and Nosehill Creek to the regulators**



2008 Pilot Watershed Monitoring

- ❑ **A four year, monitoring program to measure best management practices.**
- ❑ **Includes electrofishing, habitat assessments, and stream measurements at 27 sites**
- ❑ **Contributing to the growth of a watershed management plan.**



Athabasca rainbow trout
Oncorhynchus mykiss



Burbot
Lota lota



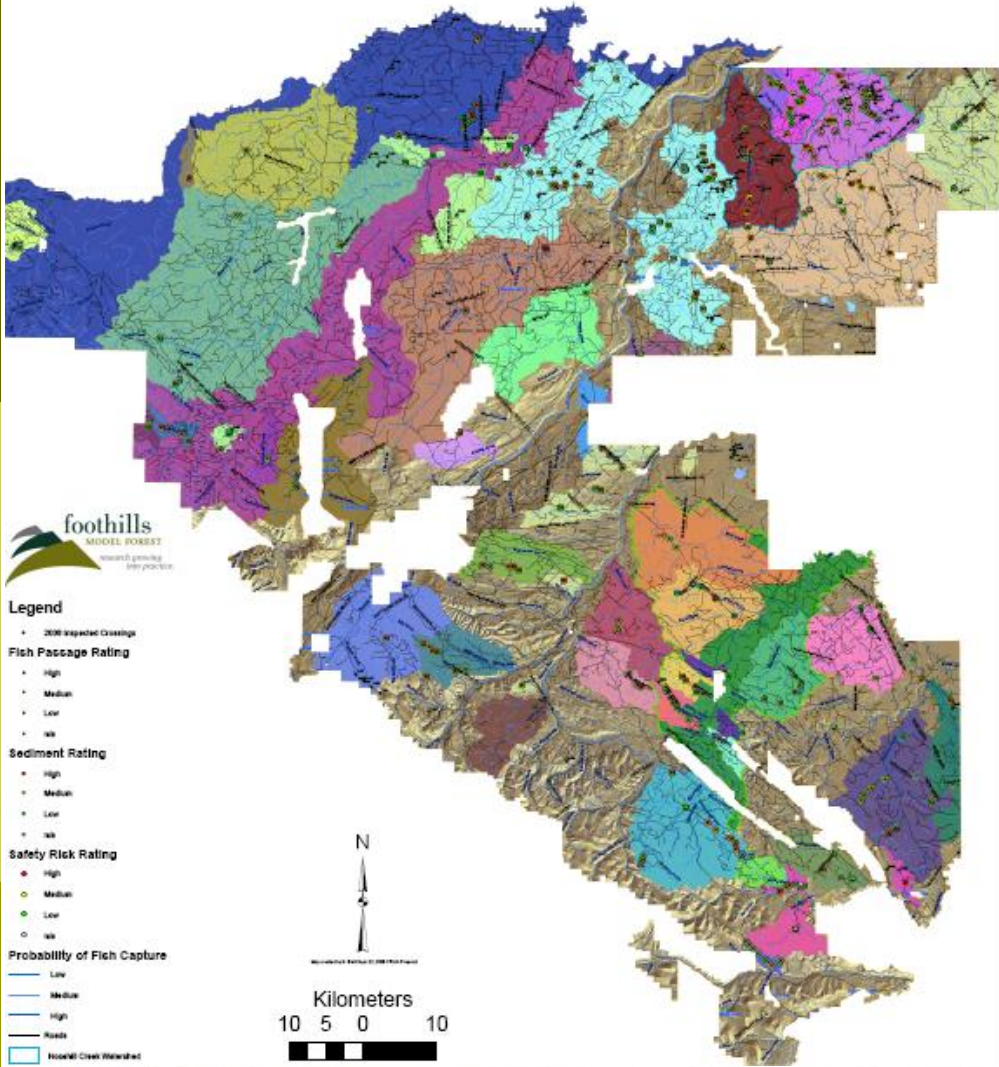
Trout perch
Percopsis omiscomaycus



White sucker
Catostomus commersoni



Potential Future Monitoring Sites 2009



❑ **Selection of additional watersheds within the FMA criteria**

❑ **Occurrences of fish passage barriers and sedimentation**

❑ **Potential for recolonization of native fish**

❑ **Variety of FSCP committee members**



Summer 2009

- Potential to apply stream crossing inspection to all of the eastern slopes.



Problems / Concerns?

- ❑ **How to get non-members on board, both industry and government?**
- ❑ **The magnitude of the problems including the number of crossings and the cost of remediation.**
- ❑ **The balance between industry driven solutions and being in compliance.**



Summary

- ❑ **Good example of “integration”**
- ❑ **Consistent with Water for Life Strategy**
- ❑ **Strong support and cooperation from industry, FRI, ASRD and DFO**
- ❑ **Results oriented and continuous improvement**
- ❑ **Potential to expand across Alberta**





Thank you

