



## Foothills Stream Crossing Program 2010 Inspection Program



# Overview

- FSCP membership
- RAD plan area inspection summary
- FSCP inspection summary
  - Initial and Maintenance Inspections
- FSCP remediation plans update



# FSCP Current membership

- ❑ **Apache**
- ❑ **Canadian Forest Products**
- ❑ **CN (inactive)**
- ❑ **CNRL**
- ❑ **ConocoPhillips**
- ❑ **Devon**
- ❑ **Hinton Wood Products, West Fraser Mills**
- ❑ **Imperial Resources (Esso)**
- ❑ **Suncor Energy (including Petro Canada)**
- ❑ **Talisman Energy**
- ❑ **Tourmaline Oil**
- ❑ **Shell Canada (including Duvernay)**



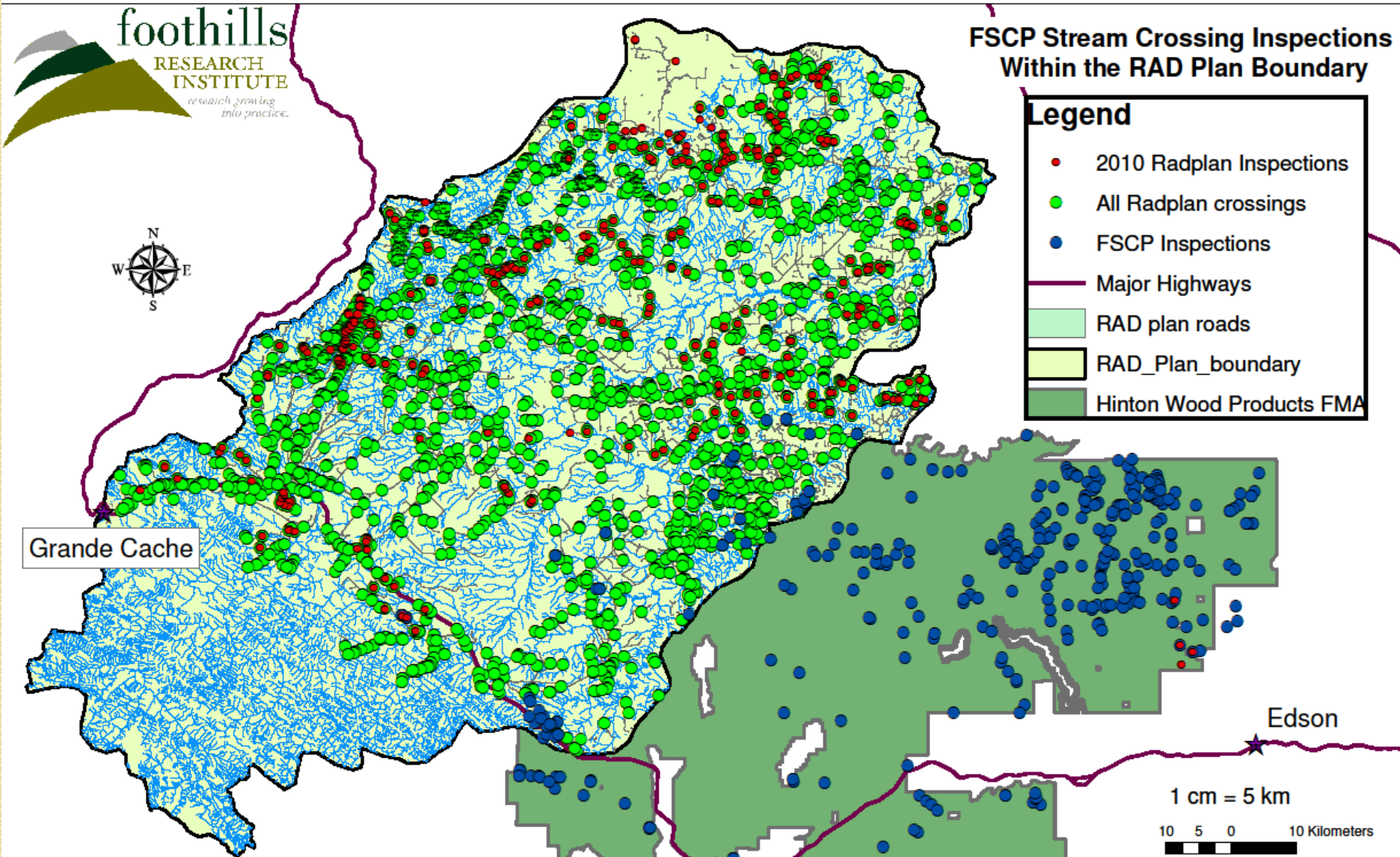
# FSCP Advisory Support

- ❑ **Fisheries and Ocean Canada**
- ❑ **ASRD Public Land and Forests**
- ❑ **ASRD Fish and Wildlife**
- ❑ **Alberta Environment**
- ❑ **Foothills Research Institute**
- ❑ **Alberta Chamber of Resources**
- ❑ **Alberta Conservation Association**





# Regional Access Plan Study Area



# RAD Plan Inspection Breakdown

- Rad plan has 2118 crossings
- 307 inspected
- Representing 31 companies
- 15 of those companies own 80% of the inspected crossings

# RAD Plan Member Crossings

- Apache – 1
- Canfor – 23
- CNRL – 61
- Conoco – 34
- Devon – 20
- Shell – 7
- Suncor – 21
- Talisman – 34
- Tourmaline – 10

- 211 member crossings (69%)
- 96 non member crossings

Total = 307 Inspected crossings / 2118 crossings

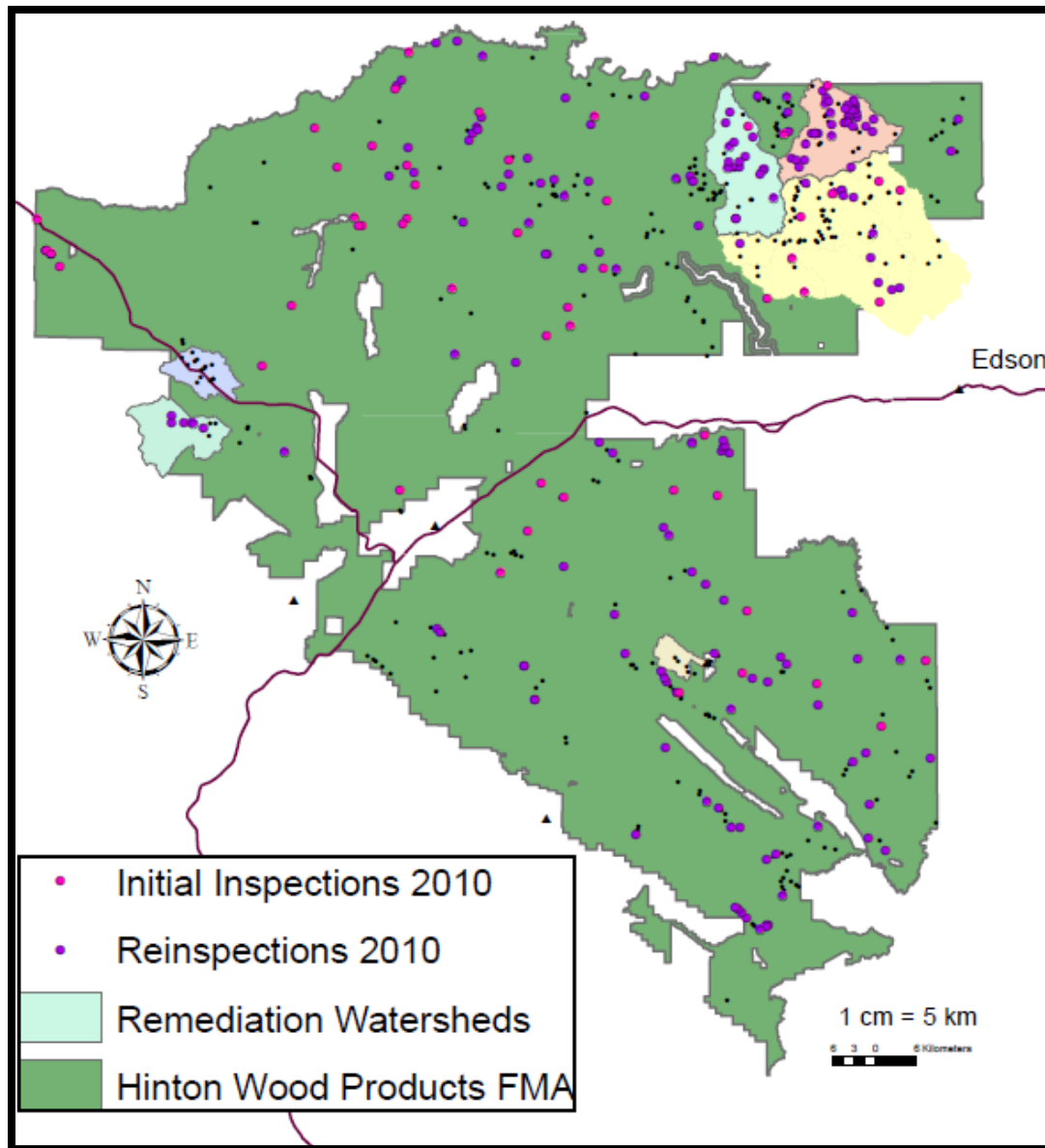
# RAD Plan Crossing Risk Ratings

- Fish passage
  - 107 fish barriers
- Sedimentation
  - 100 high risk
  - 73 medium risk
- Safety
  - 210 medium risk for performance and safety





# FSCP Study Area



- 53 Initial Inspections

- 175 Maintenance Inspections

# FSCP Member Crossings

	Initial Inspections	Maintenance Inspections	Total	Plus RAD Plan Crossings
Apache	1	16	17	18
Canfor	-	-	-	23
CNRL	11	11	22	83
Conoco	2	23	25	59
Devon	1	-	1	21
Imperial	-	6	6	6
Shell	10	11	21	28
Suncor	4	41	45	66
Talisman	8	20	28	62
Tourmaline	2	-	2	12
West Fraser	1	14	15	15
<b>TOTAL</b>	<b>40</b>	<b>142</b>	<b>182</b>	<b>393</b>

# FSCP Initial Inspections

- Fish passage
  - 5 fish barriers
- Sedimentation
  - 13 high risk
  - 5 medium risk
- Safety and Performance
  - 0 high risk
  - 30 medium risk



# Maintenance Inspections

## Sedimentation Ratings

	High	Medium	Low
2006-2009 Inspection	89	67	22
2010 Maintenance Inspection	46	48	86

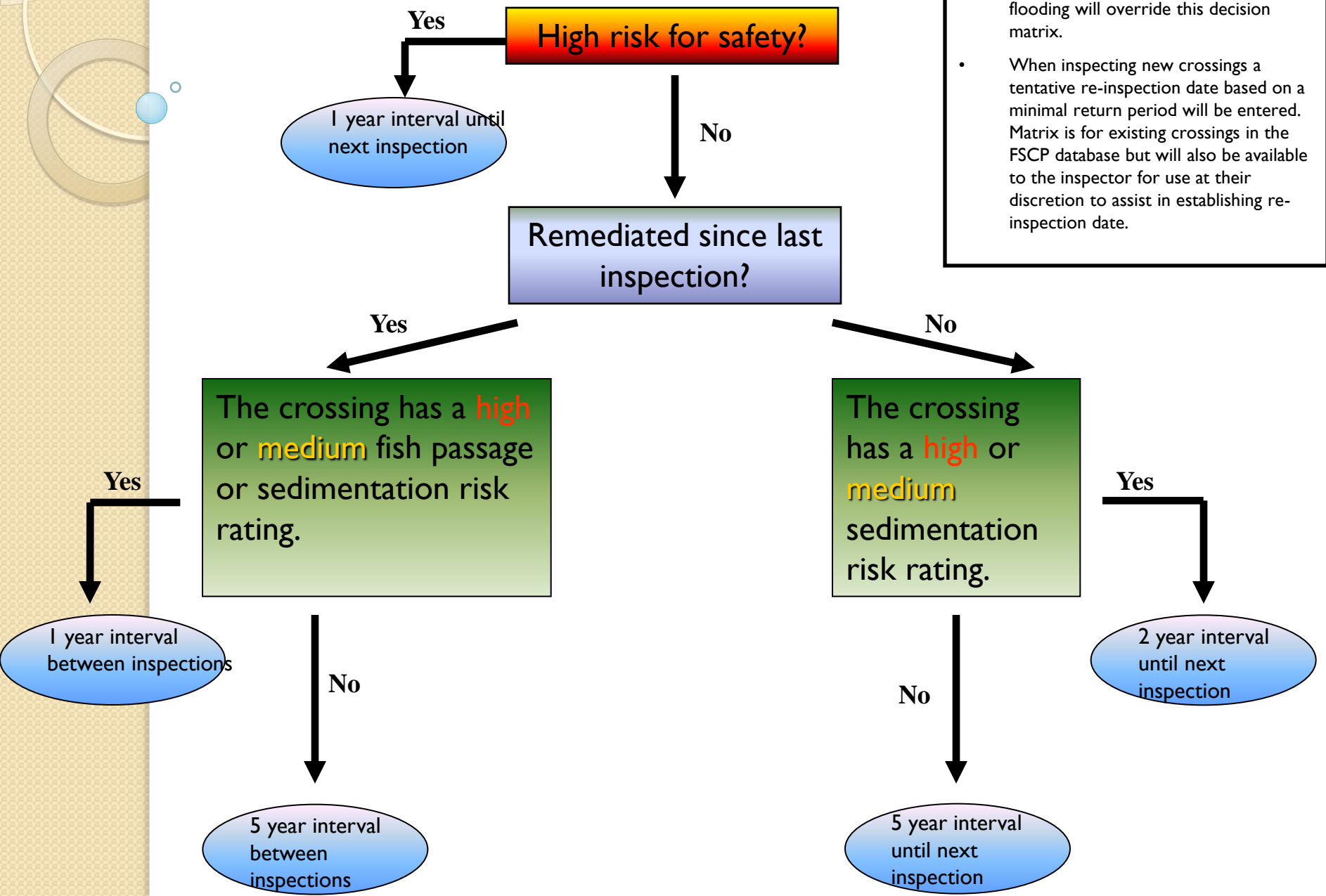
## Fish Passage Ratings

	High	Medium	Low
2006-2009 Inspection	96	-	19
2010 Maintenance Inspection	61	-	119

## Safety and Performance Ratings

	High	Medium	Low
2006-2009 Inspection	3	145	-
2010 Maintenance Inspection	0	110	70

# FSCP Re-Inspection Decision Matrix



# Maintenance Inspection Schedule

- 2011 – 286 Maintenance Inspections
  - 5 years since beginning of program
- 2012 – 299 Maintenance Inspections
- 2013 – 41 Maintenance Inspections
  - (Strongly related to results of 2011 inspections)



# Remediation Plan Updates

- Fred, Bryan, and Doctor Creek watershed plans have been submitted to ASRD, DFO, and Ab Env.
- ASRD field audit of plans completed
- Edson Watershed plan will be sent out to companies in the next week
- Deadline for remediation plan updates?



Thank you

