

Foothills Stream Crossing Partnership



October 2011 – Data Management Changes

Current membership

- Apache
- Canfor
- CN (inactive)
- CNRL
- ConocoPhillips
- Devon
- Hinton Wood Products, West Fraser Mills
- Talisman Energy
- Tourmaline
- Shell Canada (including Duvernay)
- Fisheries and Ocean Canada
- ASRD Public Lands and Forests
- ASRD Fish and Wildlife
- Alberta Environment



West Fraser



ConocoPhillips



Overview

- Review of previous data management process and tools
- Reasons for change
- Pilot data collection units
- New database structure and design
- Online Stream Crossing Management Tool
- Benefits

Review of Previous Data Management

❑ Data Collection

- Allegro data logger with limited configurability and validation
- GPS unit
- Digital Camera



Review of Previous Data Management

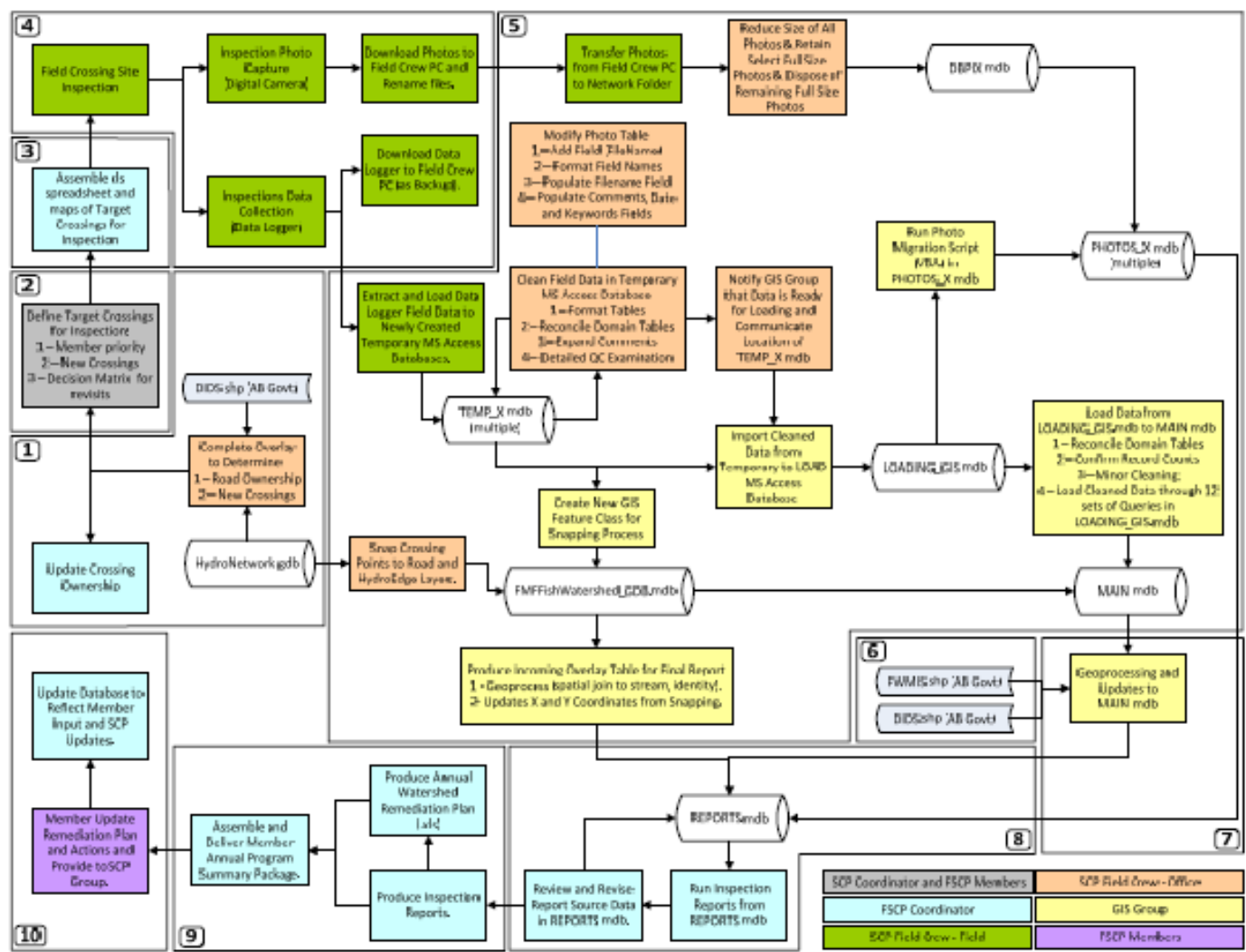
❑ Data Storage

- MS Access database for storing attribute data
- MS Access database for storing images
- MS Access for database producing inspection reports
- Geodatabase for storing spatial data

Review of Previous Data Management

❑ Data Interaction

- Inspection reports produced by FSCP and delivered to members on DVD
- 2-3 month lag between inspection and delivery of data
- Remediation plans and updates populated in MS Excel and exchanged between FSCP and members and ultimately SRD.
- Newest available data is available for members once per year.



New Data Management Approach

❑ Data Collection

- Google Android OS data collection application on a Samsung Tablet



New Data Management Approach

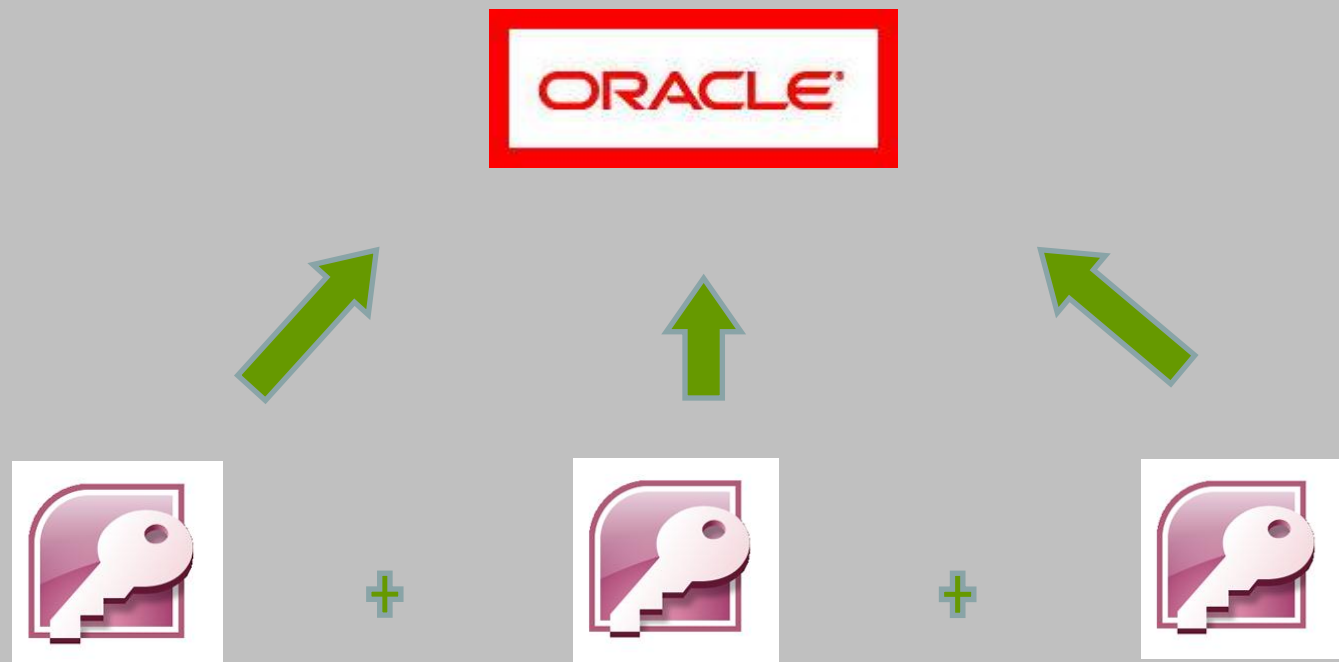
❑ Data Collection Benefits

- Application is designed according to most recent data requirements
- Extensive data validation
- Camera, GPS and datalogger all in one
- Easy transfer to outside groups conducting inspections
- Immediate upload of data to online tool available

New Data Management Approach

❑ Data Storage

- Multiple Access databases moved to one ORACLE database
- Database housed at Forestry Corp (Edm)



New Approach to Data Management

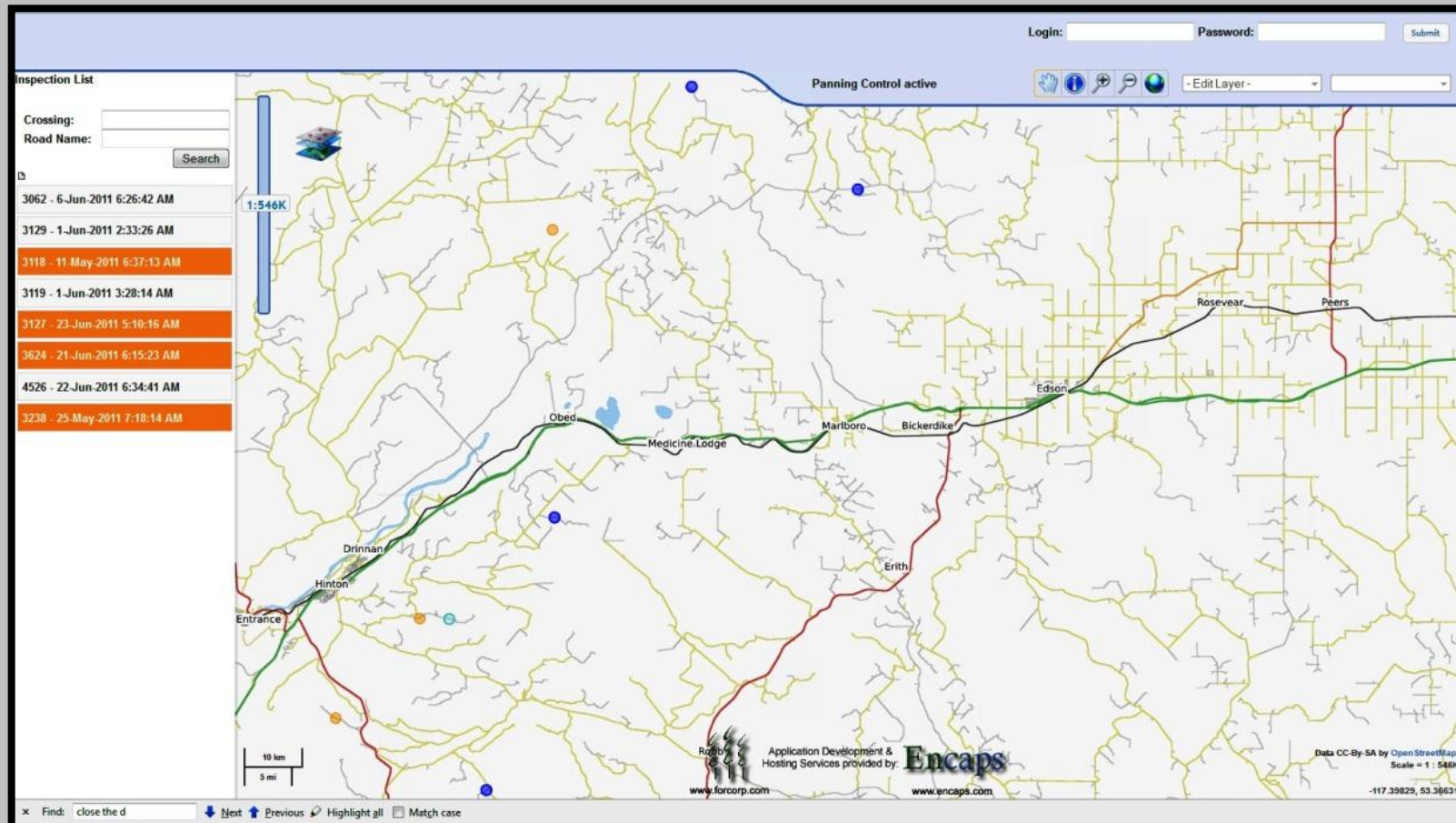
❑ Oracle Benefits

- One ORACLE database containing attribute, image and spatial data.
- Required as pathway to Online Application
- No more multiple databases
- Secure
- Data loading and extraction is simpler than with multiple databases

New Data Management Approach

□ Data Interaction

- Online mapping tool



New Approach to Data Management

❑ Data Interaction

- Companies can access data at anytime
- Search data by attributes of the crossings
- Can download spatial data and PDF reports and photos
- Watershed views of connectivity and sedimentation (over time)
- Multi level passwords available per company

Remediation Plans

Remediation Plan

Disposition No.	Crossing	Owner	Legal Location					UTM Coordinates		Colluvial or Fulluvial	Fish Prob. Rating	Fish Species	Fish Passage Risk Rating	Erosion Risk Rating	Year Inspected	Crossing	
			Twp	Rge	Mer	Sec	QS	Easting	Northing							Type	Size (m)

Stream Class (as per CDP)	Timing Restrictions	Summary of Current Problems (Recommendations)	Proposed Remediation	Timing	In Stream Activity (Y or N)
---------------------------	---------------------	---	----------------------	--------	-----------------------------

- Final product and end objective of stream crossing inspections.
- Currently completed by sending an Excel spreadsheet to all members then on to ASRD
- Online tool will facilitate the completion of remediation plans

Disposition No.	Crossing	Owner	Legal Location					Colluvial or Fulluvial	Fish Prob. Rating	Fish Species	Fish Passage Risk Rating	Erosion Risk Rating	Year Inspected	Crossing	
			Twp	Rge	Mer	Sec	QS							Type	Size (m)

Summary of Current Problems from Last Inspections (Recommendations)	Work Completed	Date	Next Inspection
---	----------------	------	-----------------

New Approach to Data Management

- ❑ Partner driven
- ❑ Increased efficiency
- ❑ Builds capacity
- ❑ Attracts future companies



Thank you