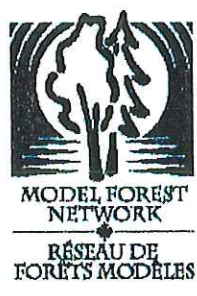
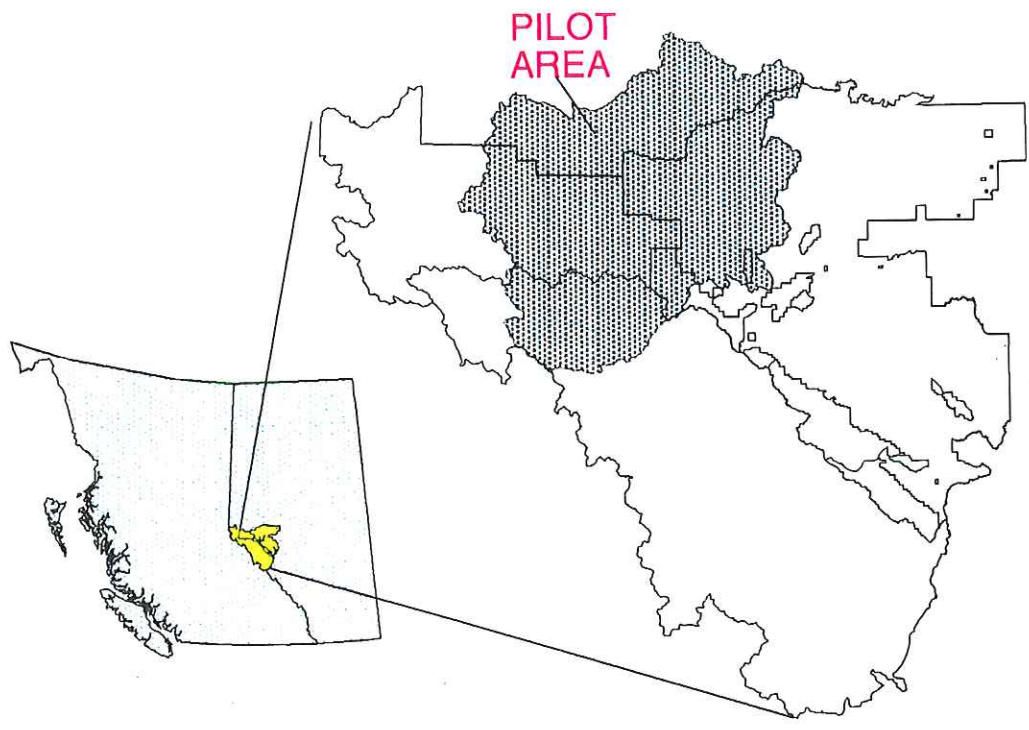




Cumulative Effects Assessment: Data Inventory Atlas

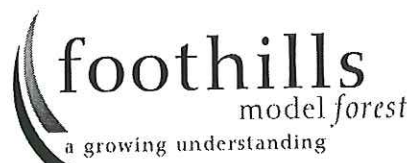


Compiled by:
 Julie Dugas
 GIS Technician
 Foothills Model Forest
 July 2, 1998

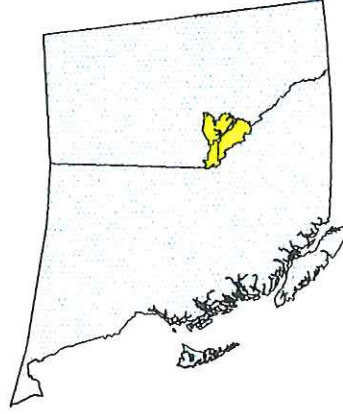
This atlas represents a data inventory at the Foothills Model Forest as of July 2, 1998. The inventory was compiled to provide an overview of available data for the Cumulative Effects Assessment project.

List of Maps:

CEA Study Inventory
Roads and Seismic Lines Extents
Lakes and Streams
DEM Inventory
Digital Orthophotos
Satellite Images: Landsat
Fish Inventory
Grizzly Bears and Caribou
Recreational Activity Sites
Land Dispositions
Stand Origin
Soils Inventory
Vegetation Inventory
YEWG Natural Subregions / Biogeoclimatic Zones
YEWG Surficial Materials
YEWG Data within the CEA Pilot Boundary
Forest Management Units
Wildlife Management Units



CEA Study Boundary

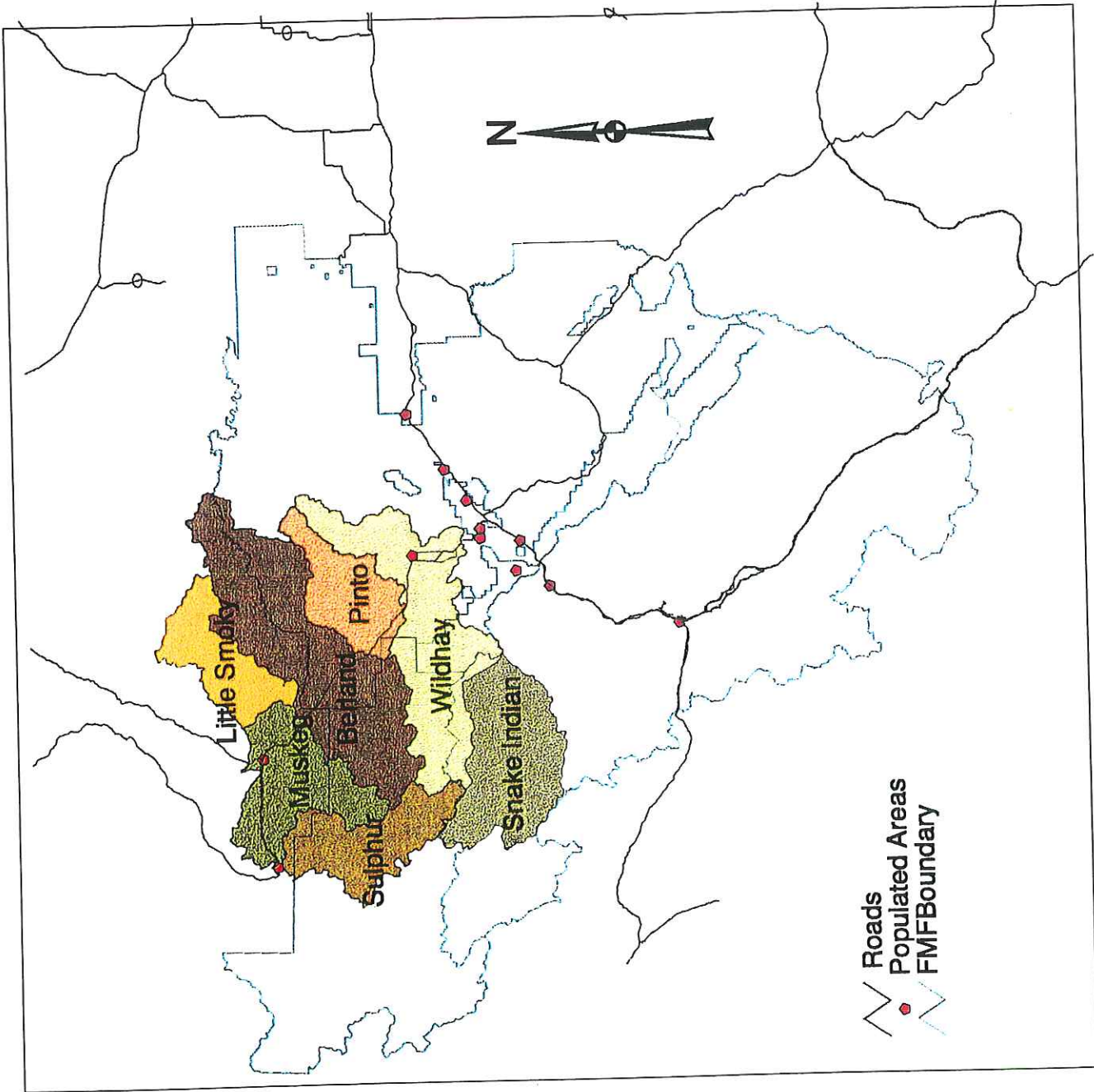


The watershed boundaries (i.e. Muskeg and Berland) were calculated using the Watershed Assessment Model (WAM) and using heads-up digitizing based on contour lines.

For a more detailed map, refer to the FMF Cumulative Effects Project: Berland/Wildhay Pilot Area 1:200,000 map.



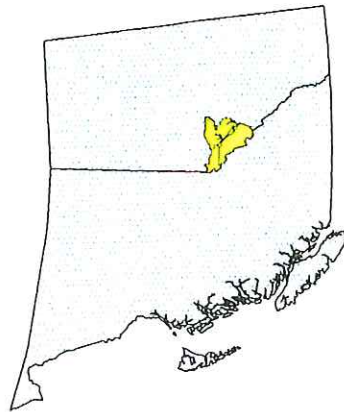
Julie Dugas
June 11, 1998



Roads
 Populated Areas
 FMF Boundary

40 0 40 80 120 160 Kilometers

Roads and Seismic Lines Extents

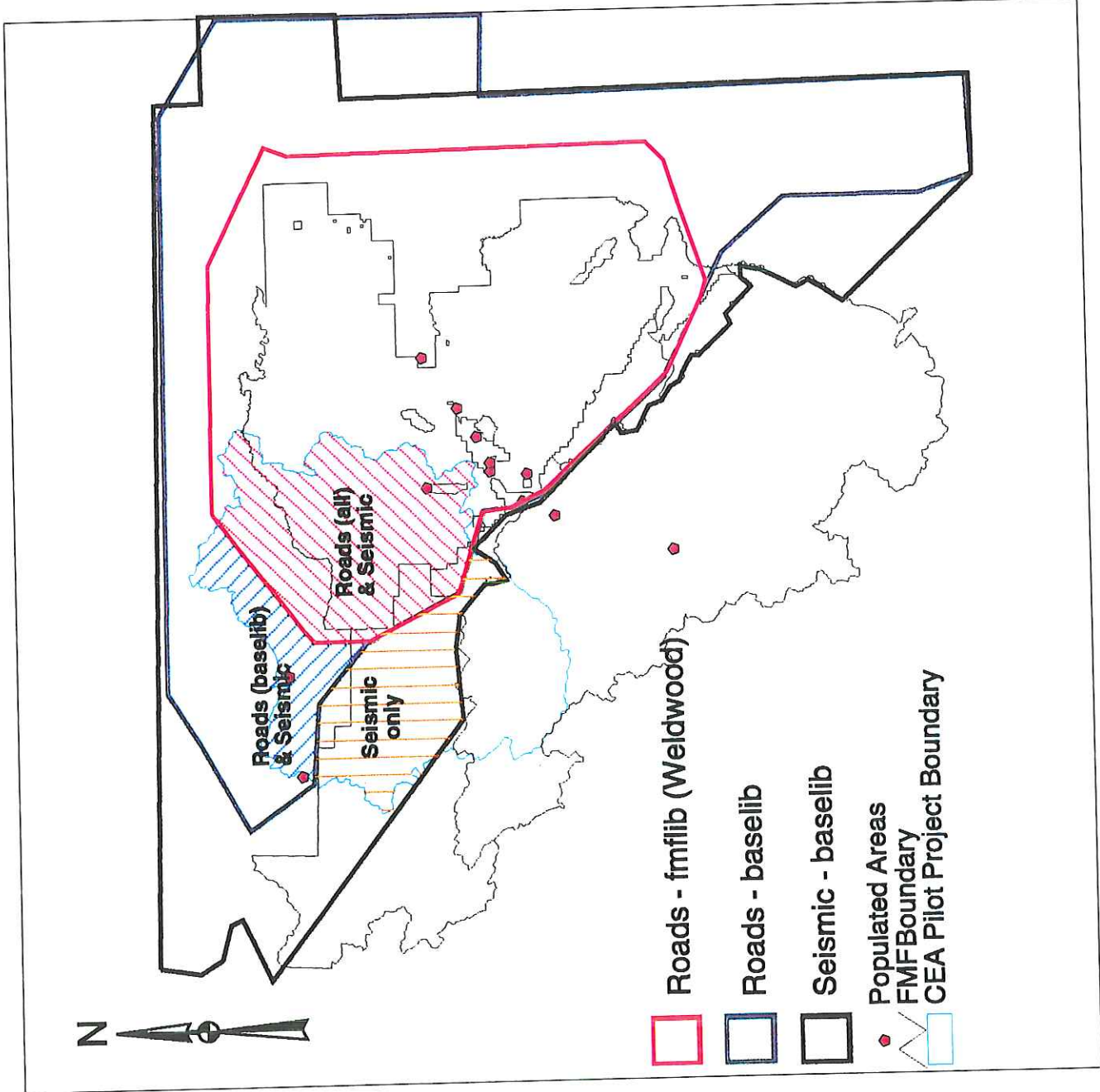


All seismic lines are currently defined as trail/cutline and will need to be reclassified appropriately.

The road data from Weldwood is the most current (1996). An update is expected in the Fall of 1998.



Julie Dugas
June 11, 1998



Lakes and Streams



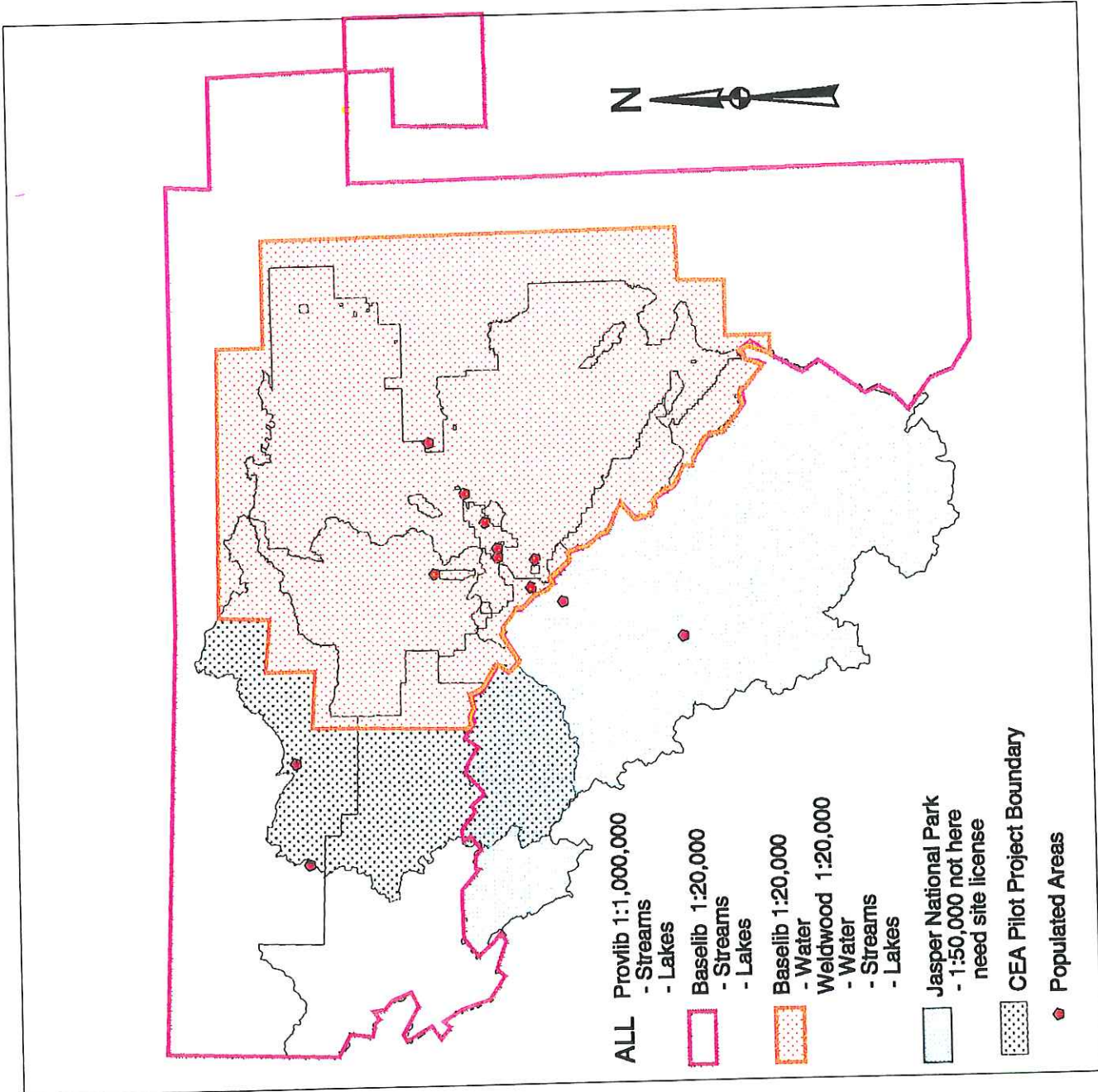
NOTES:

The baselib water and streams coverages are not exactly the same. One is more recent than the other.

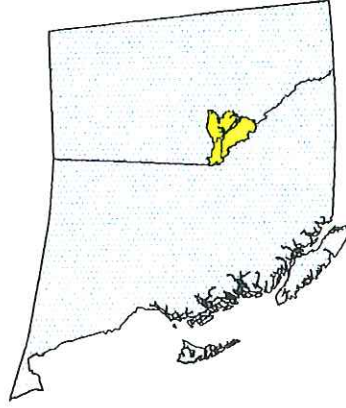
We need a site license to obtain the 1:50,000 NTS stream and lake data from Jasper National Park. The current data for that area is too coarse.



Julie Dugas
June 15, 1998

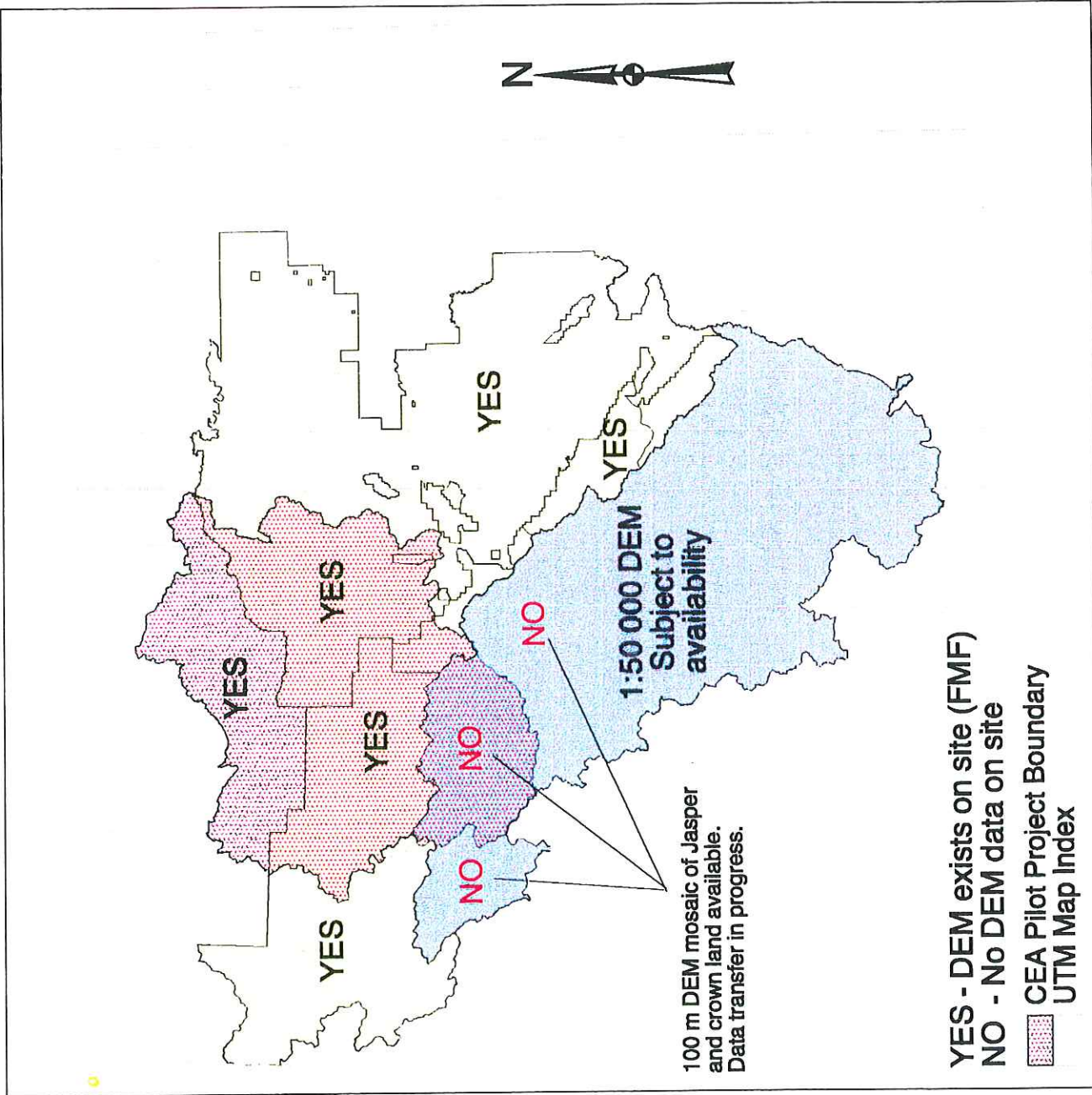


DEM Inventory

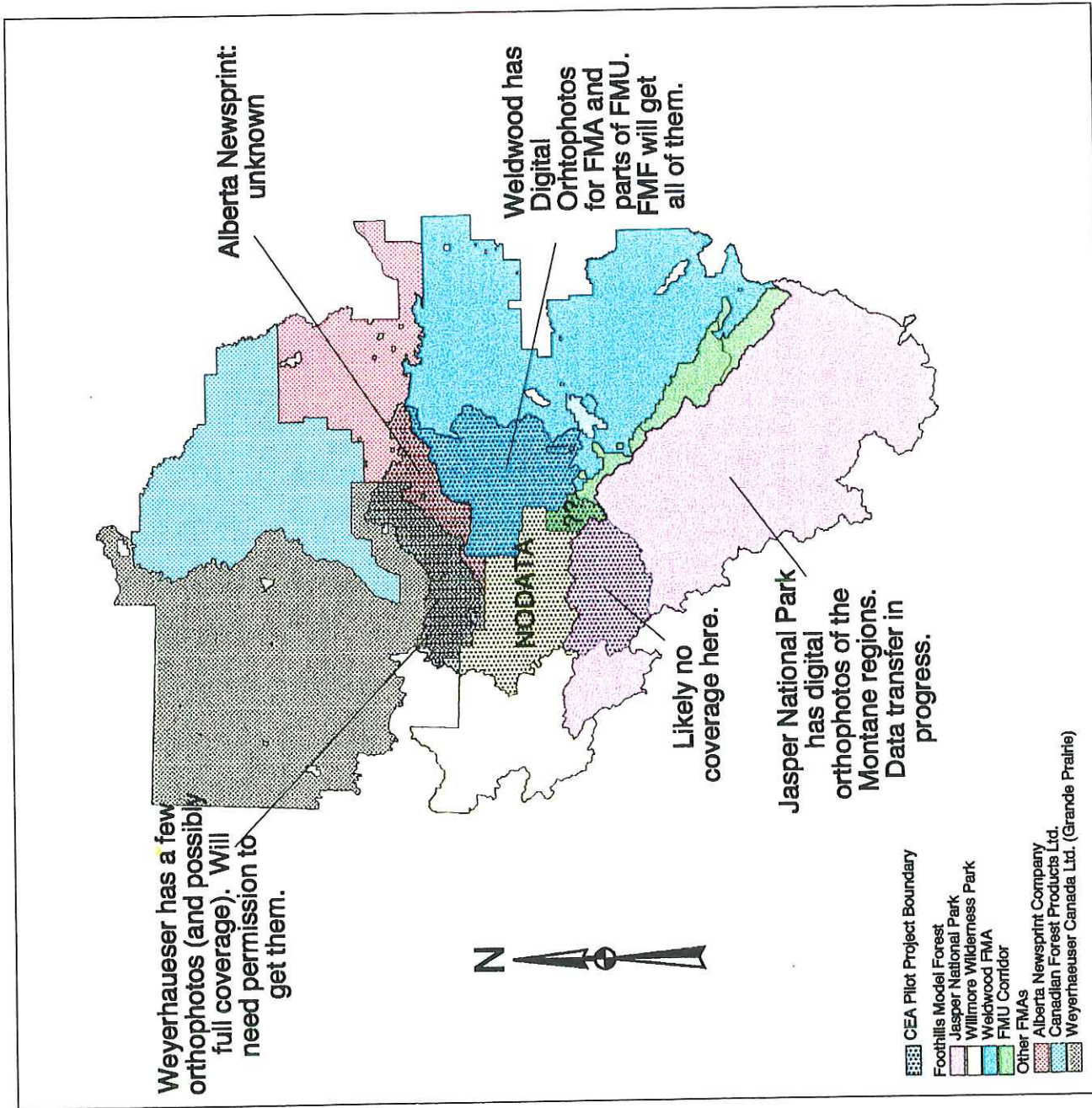
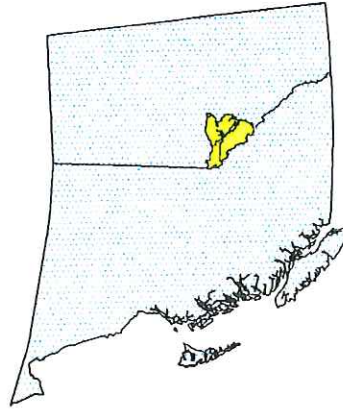


The DEM map sheets around Jasper National Park are clipped at the border.

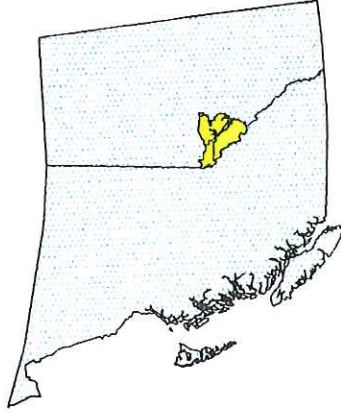
The raw DEM data exists on backup 8mm tapes. TINS created from this data are currently on the FMF disk drive.



Digital Orthophotos

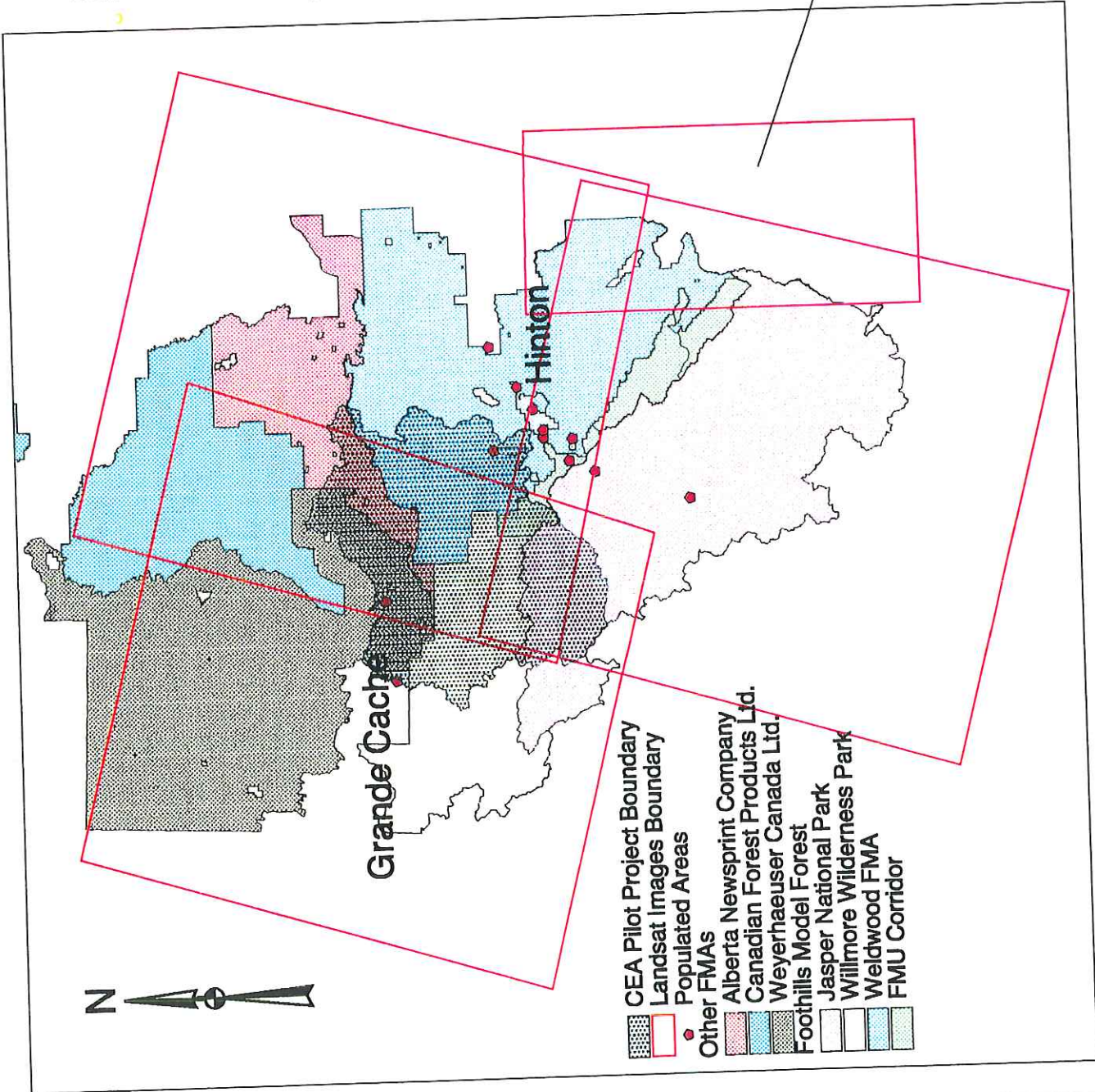


Satellite Images: Landsat

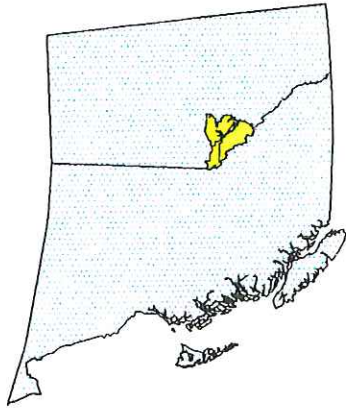


This scene has had no geometric correction.

Remaining 3 scenes are geometrically correct to no more than 200 m.



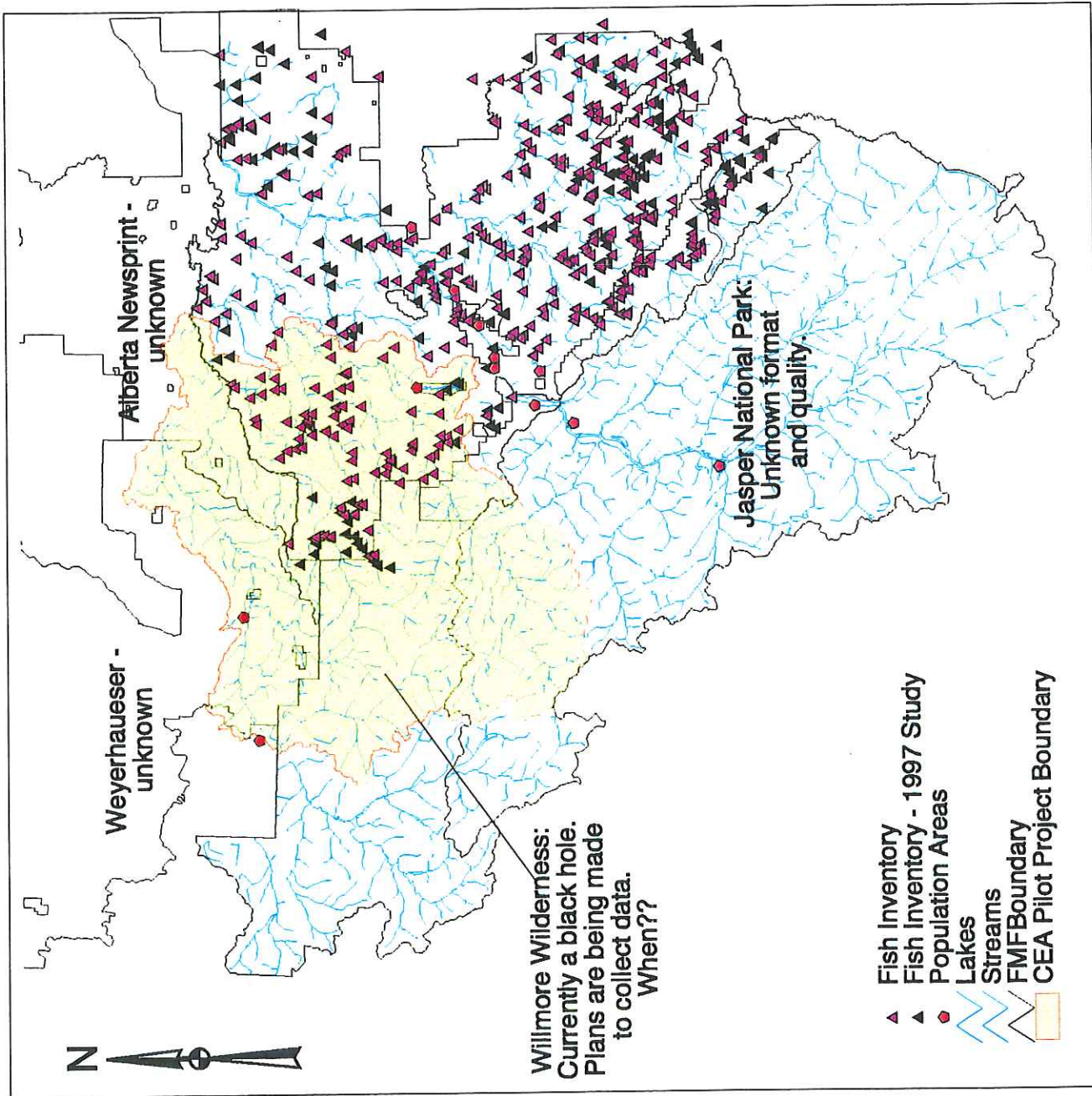
Fish Inventory



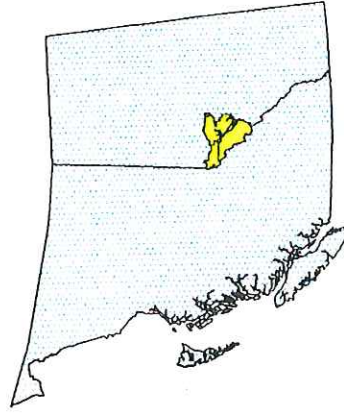
Provincial government fish data may exist and if so, may be available.



Julie Dugas
June 18, 1998



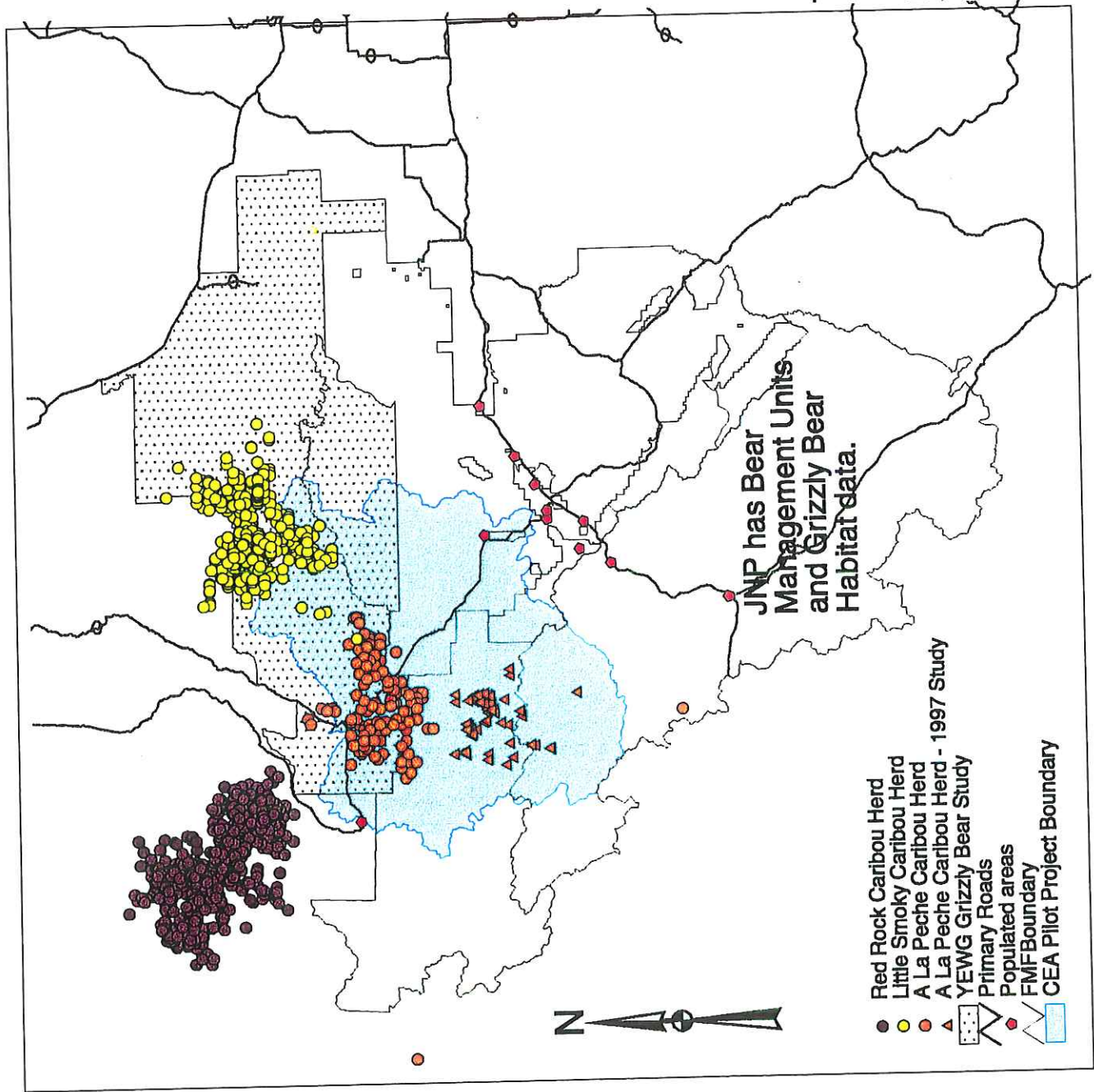
Grizzly Bears and Caribou



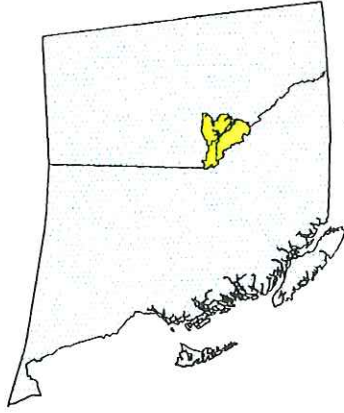
The date of collection for the caribou herds is suspected to be in the 1980s. A 1997 study was done on the A La Peche Herd. The methods of collection varied from GPS to telemetry.



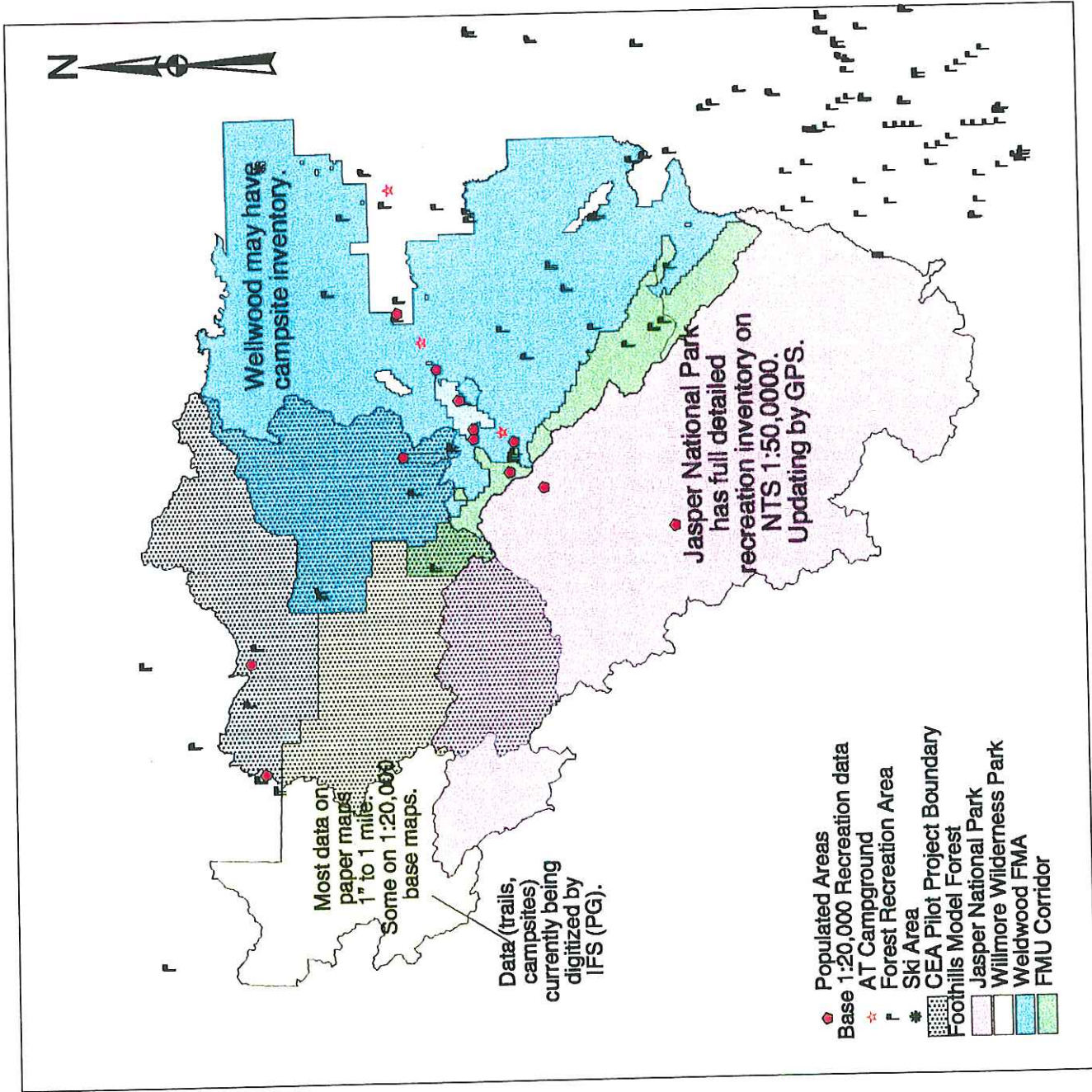
Julie Dugas
June 17, 1998



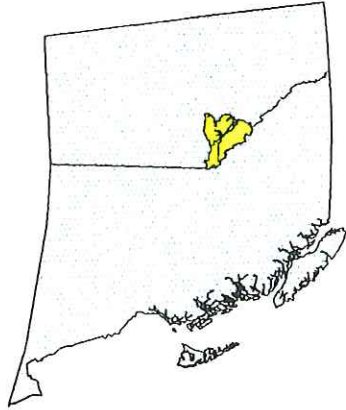
Recreational Activity Sites



Julie Dugas - June 15, 1998
Updated July 2, 1998



Land Dispositions



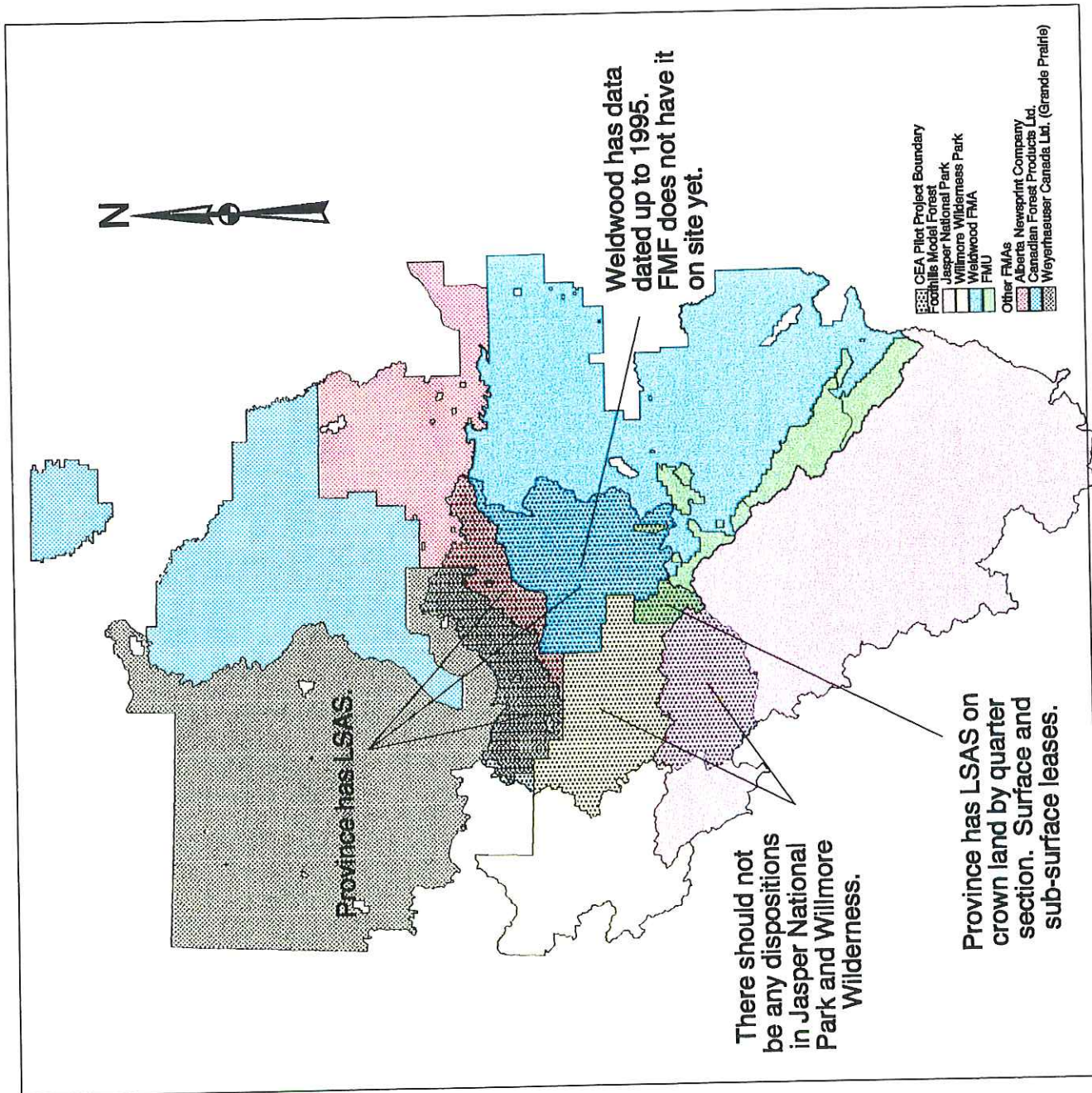
Darren Tapp can provide surface leases.

Rhonda Wehrhahn can provide subsurface leases.

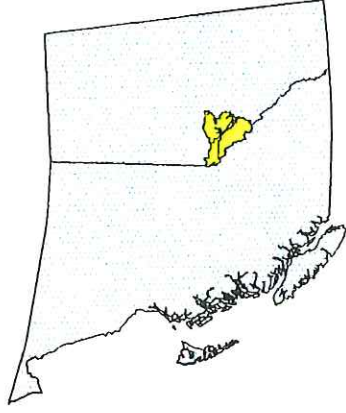
Grazing leases may be available for certain areas.



Julie Dugas
June 18, 1998



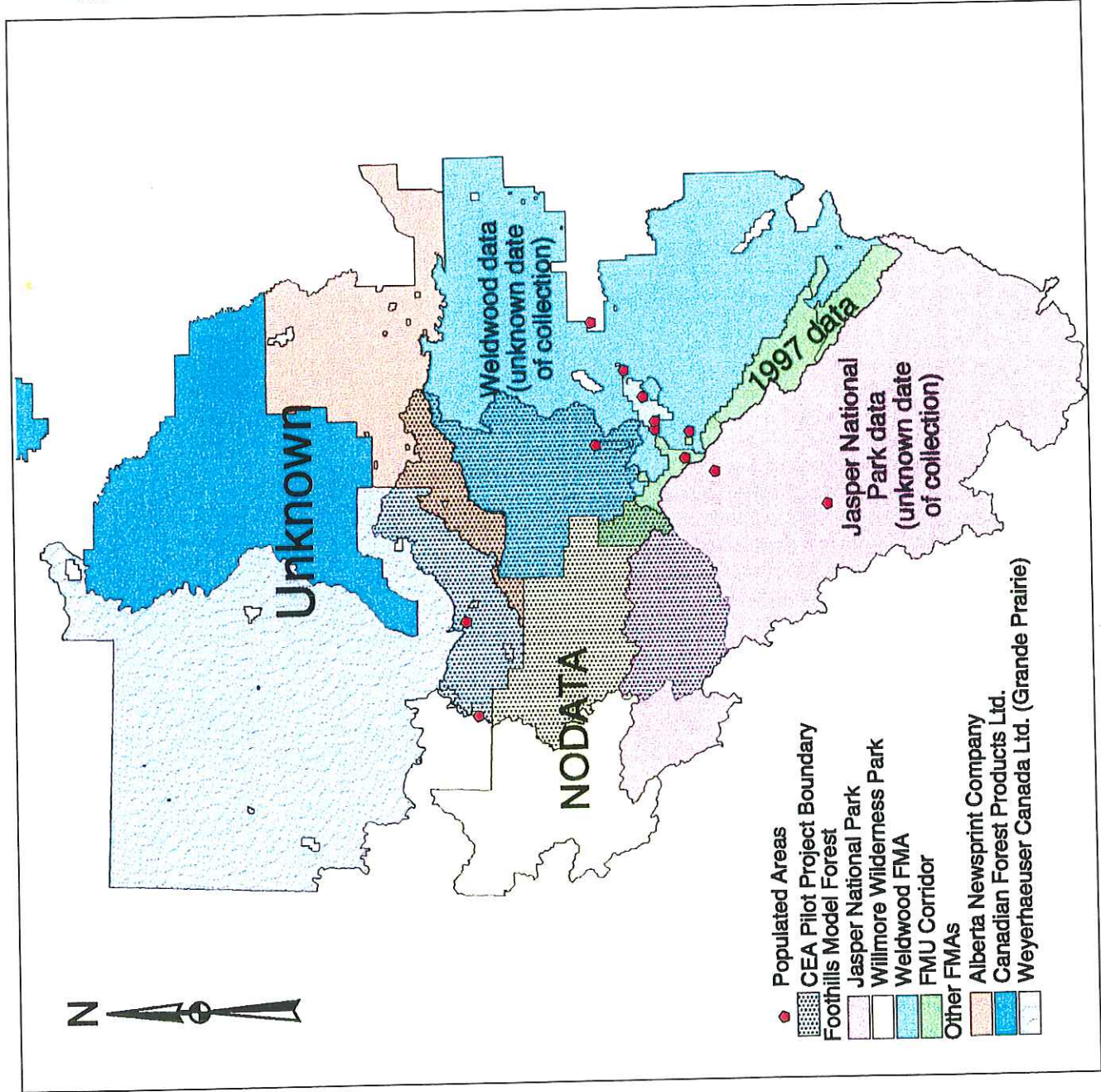
Stand Origin



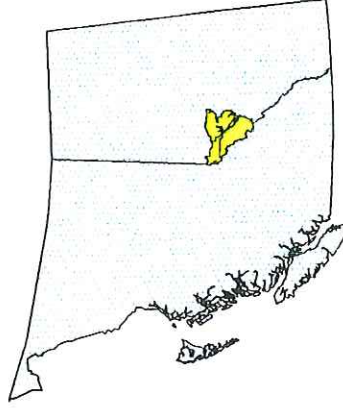
For more information, refer to the Stand Origin Map of the Foothills Model Forest 1:500,000 map.



Julie Dugas
June 15, 1998



Soils Inventory

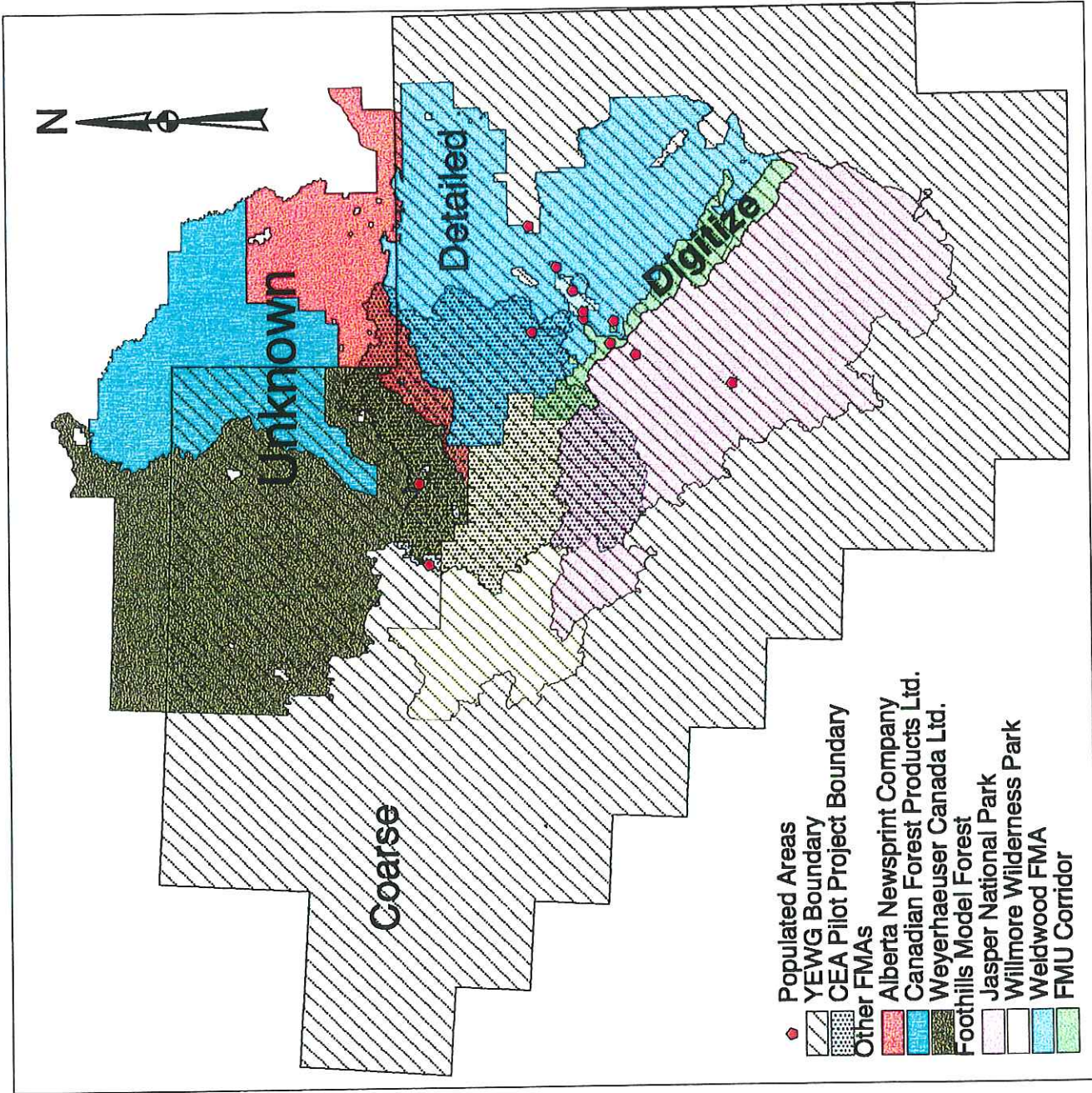


Note:
Soils data for the FMU Corridor is available in paper format. It will need to be digitized.

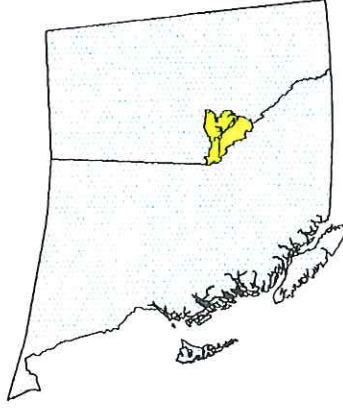
Willmore and Jasper fall under the extent of the YEWG.



Julie Dugas
June 15, 1998



Vegetation Inventory

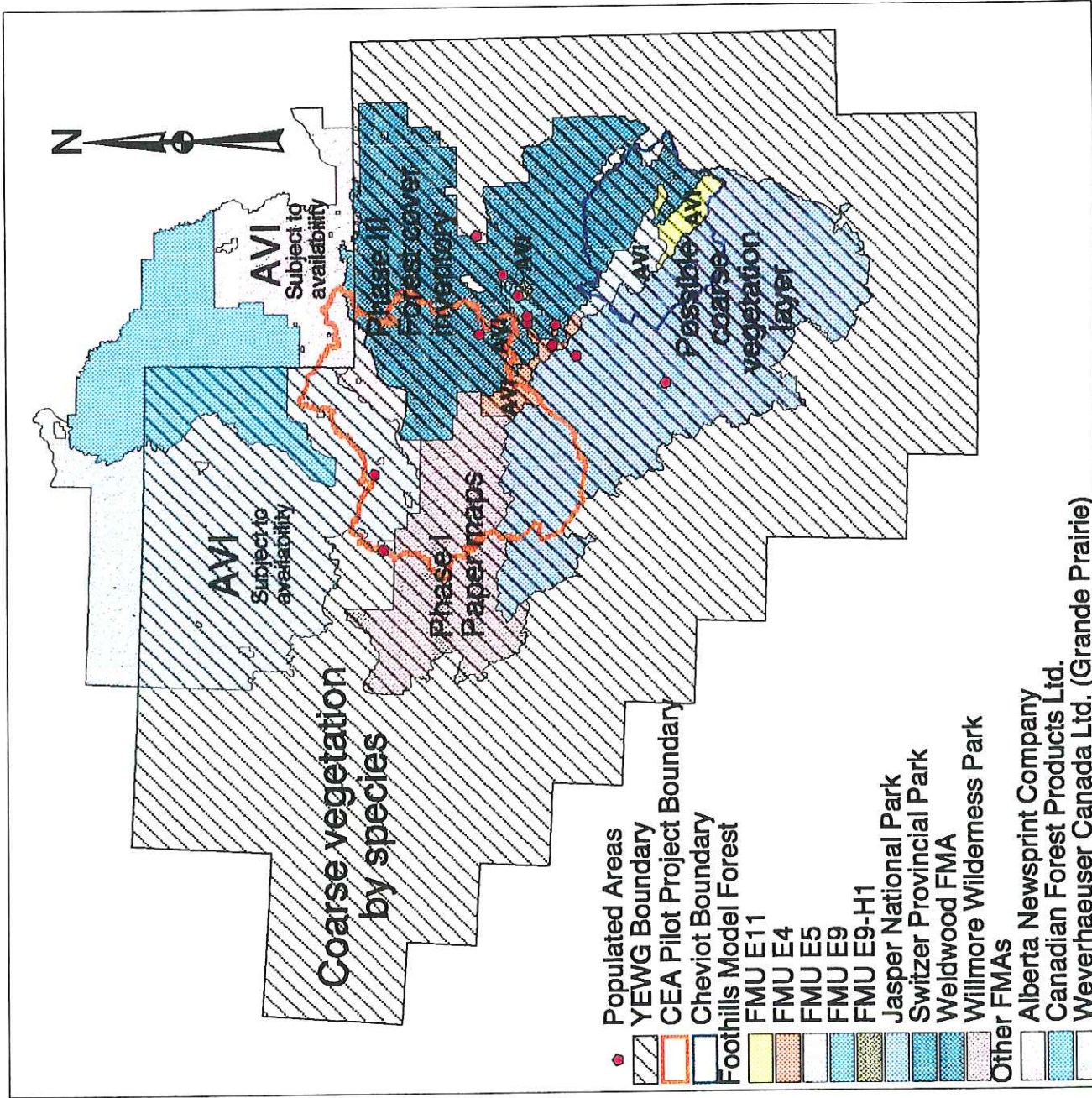


NOTES:

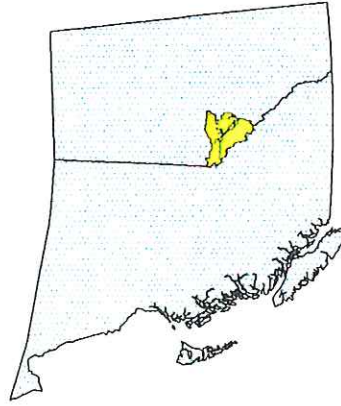
- *Weldwood FMA
-> AVI not available yet
- *Cache Percotte AVI collected by ETC
- *FMU AVI collected through Foothills Model Forest
- *YEWG
-> aslo has vegetation physiognomy



Julie Dugas - June 15, 1998
Updated July 2, 1998



YEWG Natural Subregions / Biogeoclimatic Zones

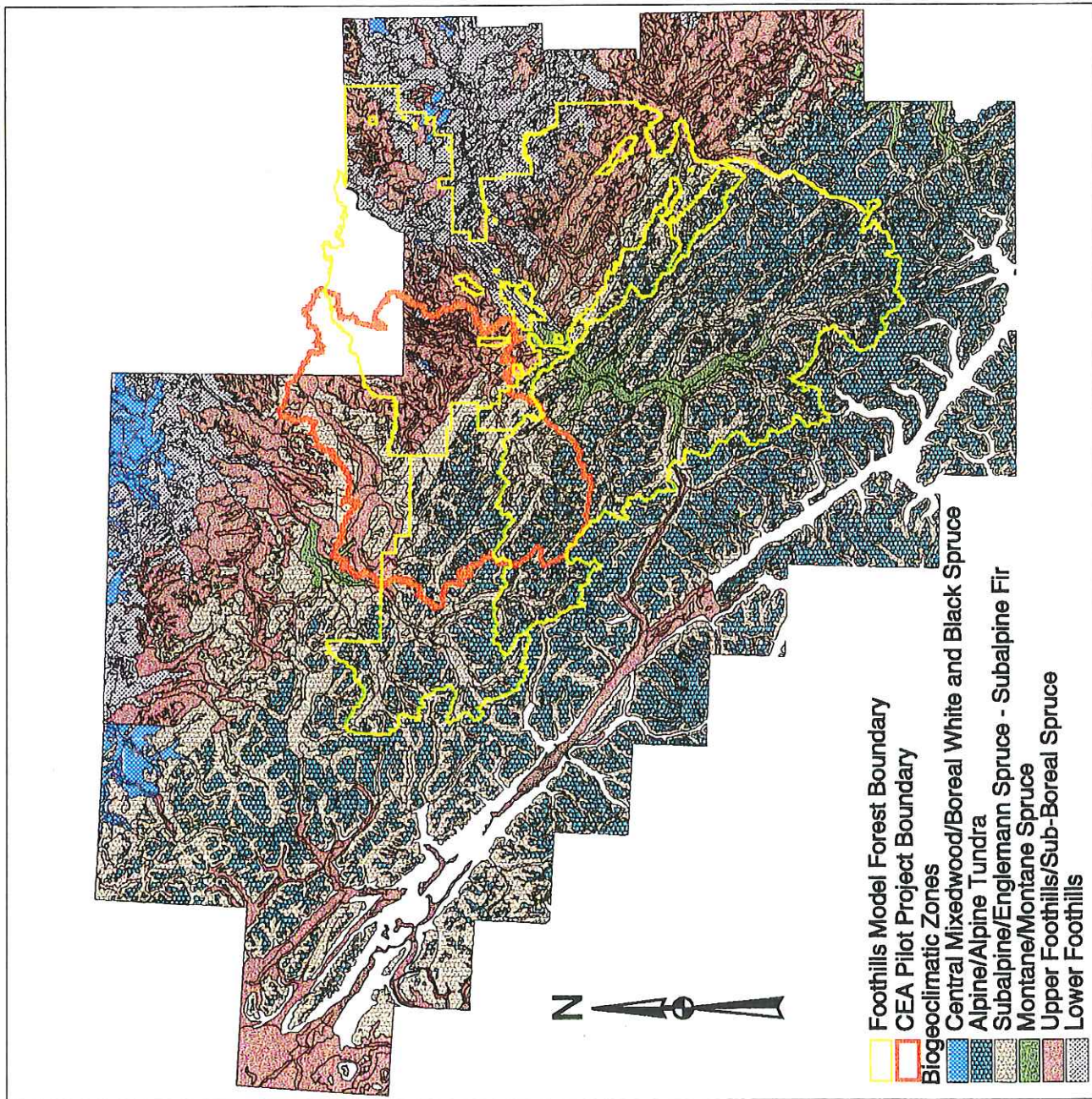


Source: Yellowhead Ecosystem Working Group

Subregion data available for whole study area. (from province)

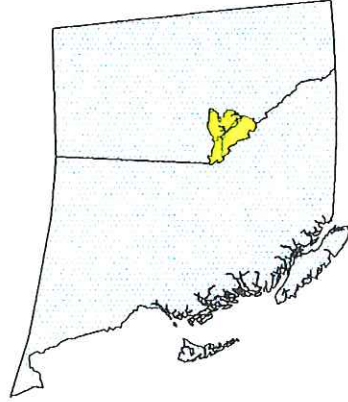


Julie Dugas - June 17, 1998
Updated July 2, 1998

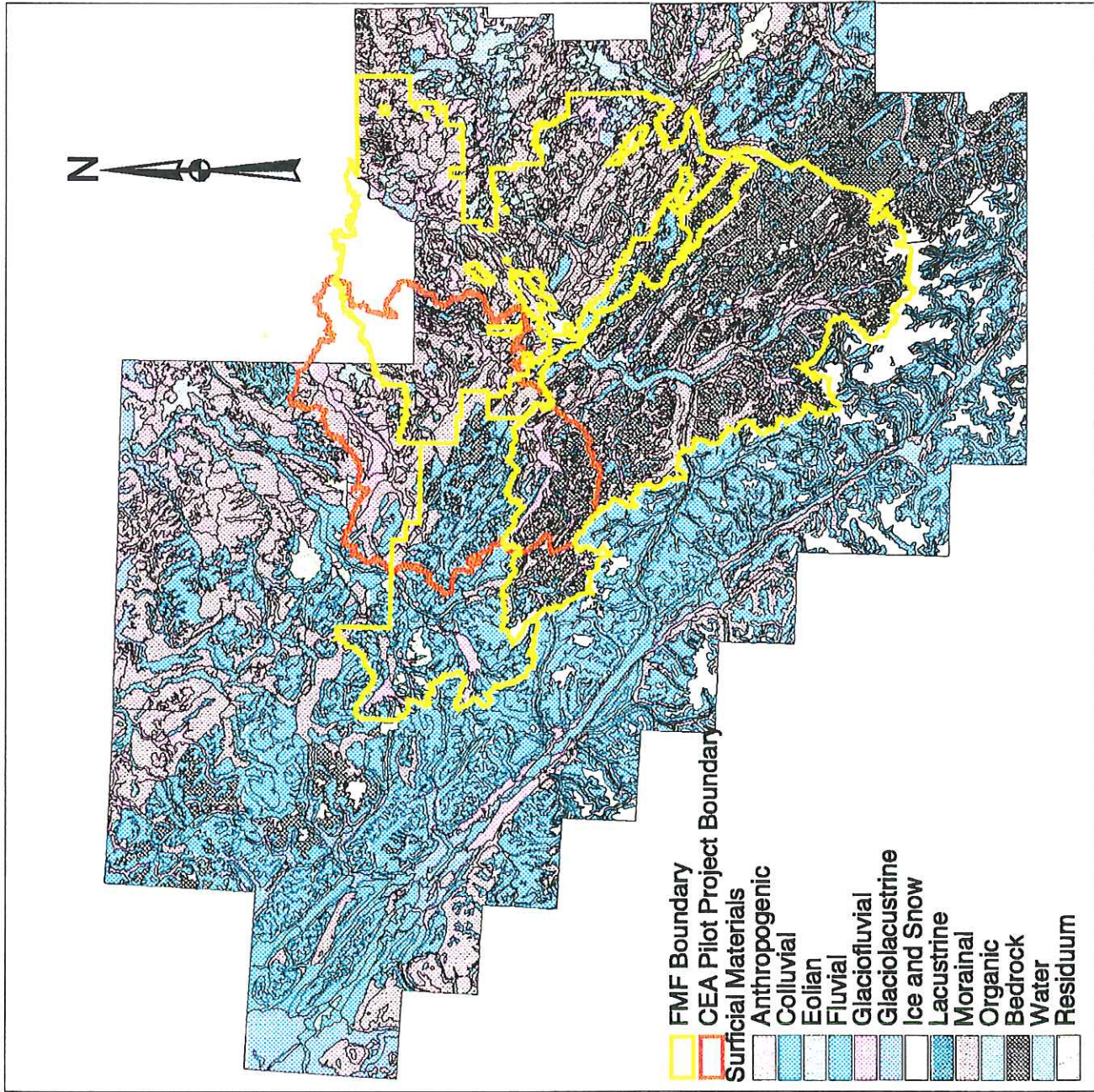


50 0 50 100 150 200 Kilometers

YEWG Surficial Materials

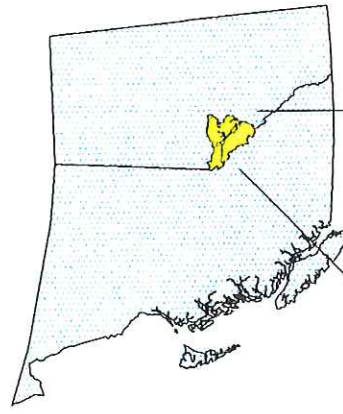


Julie Dugas
June 17, 1998



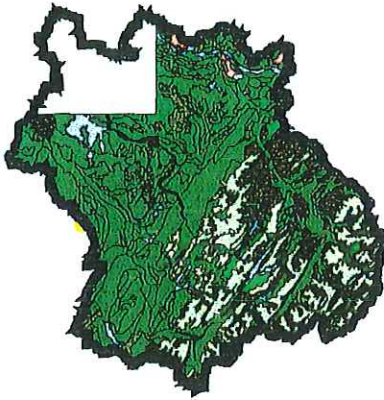
50 0 50 100 150 200 Kilometers

YEWG Data Within the CEA Pilot Boundary



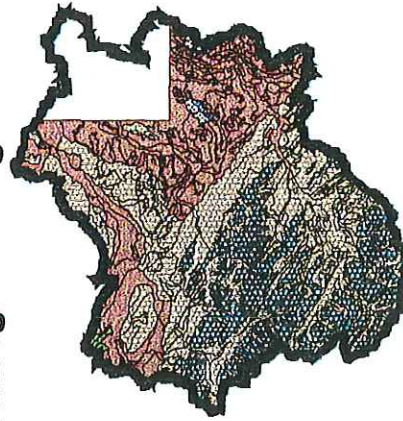
Julie Dugas
June 18, 1998

Vegetation



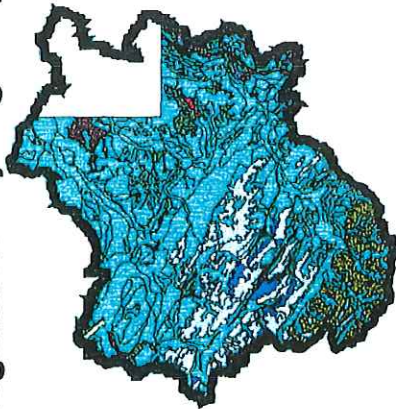
- Vegetation**
- Lodgepole Pine
 - Barnet/Unvegetated
 - Undifferentiated Wetland
 - Engelmann Spruce x White Spruce Hybrid
 - Black Spruce
 - Black Spruce and Tamarack Wetland
 - Clearing
 - Dwarf Birch, Sedge, Willow Wetland
 - Engelmann Spruce
 - White Spruce

Natural Subregions/Bioecoclimatic Zones



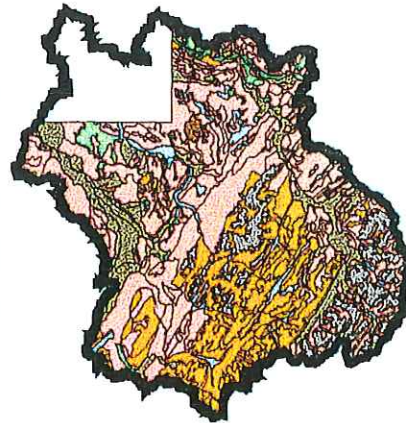
- Natural Subregions/Bioecoclimatic Zones**
- Central Mixedwood/Boreal White and Black Spruce
 - Alpine/Alpine Tundra
 - Subalpine/Engelmann Spruce - Subalpine Fir
 - Montane/Moritanic Spruce
 - Upper Foothills/Sub-Boreal Spruce
 - Lower Foothills

Vegetation Physiognomy



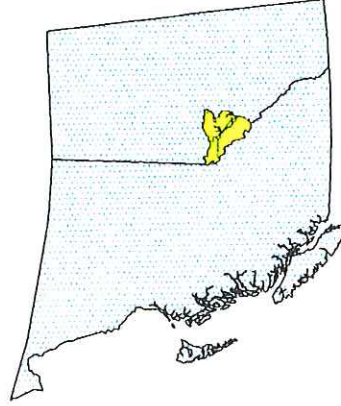
- Vegetation Physiognomy within Pilot Area**
- Cropland
 - Cleanings, Burn
 - Forest, Closed-canopied, Coniferous
 - Forest, Closed-canopied, Deciduous
 - Forest, Closed-canopied, Mixedwood
 - Forest, Open-canopied, Coniferous
 - Forest, Open-canopied, Deciduous
 - Wetland - Shrub
 - Herbaceous
 - Cities, Towns, Industrial Developments
 - Rock, Talus
 - Shrub, Open-canopied, Deciduous

Surficial Materials

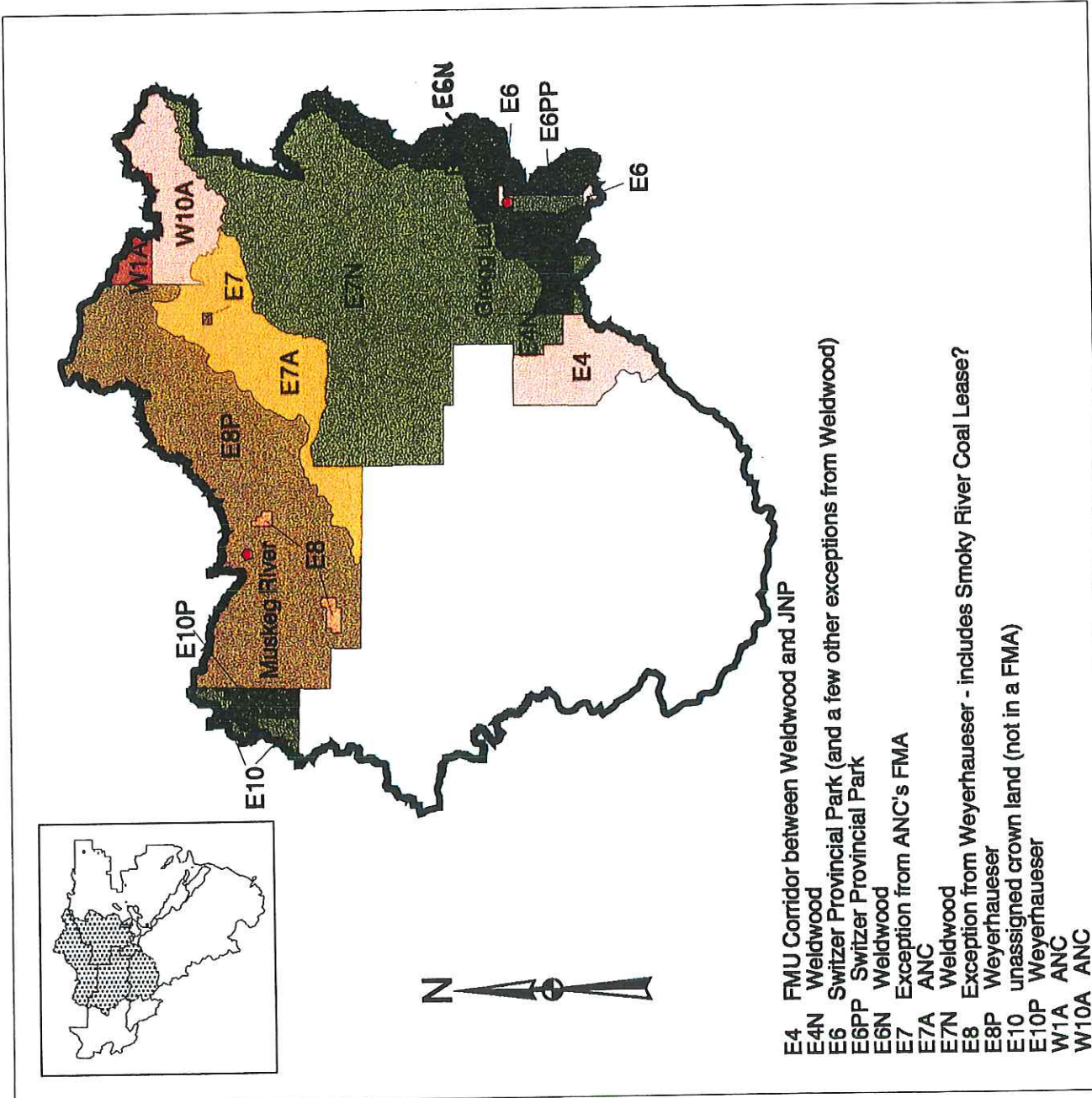


- Surficial Material**
- Bedrock
 - Colluvial
 - Glaciolacustrine
 - Fluvial
 - Glacioluvial
 - Lacustrine
 - Morainal
 - Organic

Forest Management Units



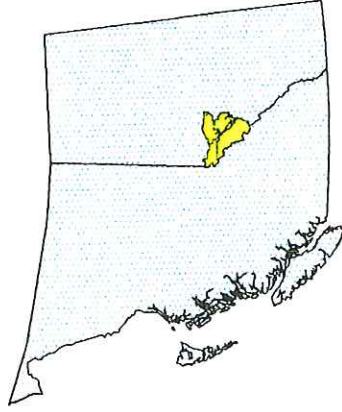
Julie Dugas
July 2, 1998



- E4 FMU Corridor between Weldwood and JNP
- E4N Weldwood
- E6 Switzer Provincial Park (and a few other exceptions from Weldwood)
- E6PP Switzer Provincial Park
- E6N Weldwood
- E7 Exception from ANC's FMA
- E7A ANC
- E7N Weldwood
- E8 Exception from Weyerhaeuser - includes Smoky River Coal Lease?
- E8P Weyerhaeuser
- E10 unassigned crown land (not in a FMA)
- E10P Weyerhaeuser
- W1A ANC
- W10A ANC

20 0 20 40 60 80 Kilometers

Wildlife Management Units

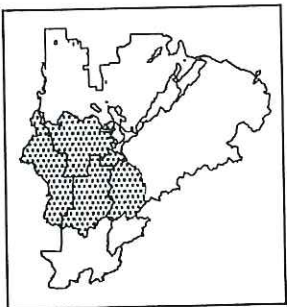
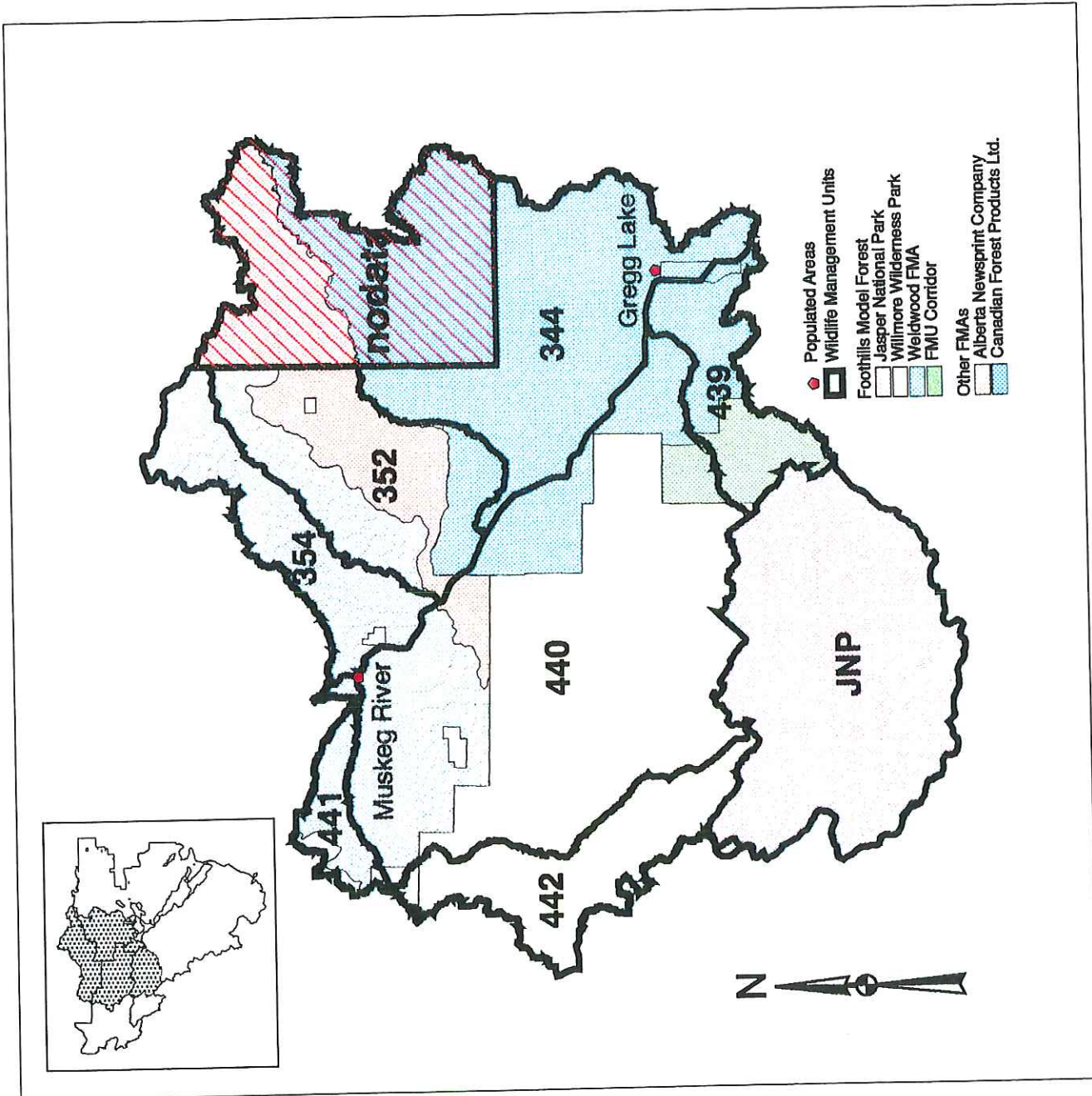


The wildlife management units are based on the Yellowhead Ecosystem Working Group data.

One small section on the north-east tip of the pilot boundary does not have such data.



Julie Dugas
June 17, 1998



MAP NARRATIVES

CEA Study Boundary

Shows the Cumulative Effects Assessment pilot boundary. The boundary encompasses the Weldwood FMA, some FMUs, Jasper National Park, Willmore Wilderness Area, Weyerhaeuser FMA and the Alberta Newsprint FMA. Seven major watersheds were identified using the Watershed Assessment Model (WAM) and using heads-up digitizing based on contour lines. For a more detailed map, refer to the FMF Cumulative Effects Project: Berland/Wildhay Pilot Area 1:200 000 map available at the Foothills Model Forest.

Roads and Seismic Lines Extents

Shows the extents of roads and seismic lines within the baselib library (provincial base data) and the fmflib library (Weldwood FMA data).

- Jasper has 1:50 000 federal NTS roads and access data. (not indicated on map)
- All provincial crown land is covered with 1:20 000 base data of roads and seismic lines.

Notes:

- The provincial base seismic lines are old and date back to as far as 1981.
- There are two different scales of data.
- We don't currently have the Jasper data.

Lakes and Streams

Shows the extents of the lakes and streams data.

- Lakes and streams from provincial 1:1 000 000 data.
- Lakes and streams from provincial base 1:20 000 data.
- Lakes and streams from Weldwood FMA, 1:20 000 data.
- Lakes and streams from Jasper, 1:50 000 data.

Notes:

- There are three different scales of data.
- We don't currently have the Jasper data. Need site license.

DEM Inventory

Shows which areas have a DEM (Digital Elevation Model) coverage.

- All areas except Jasper are covered with a 1:20 000 DEM. The DEMS covering areas on the Jasper border are clipped to that border.
- Jasper has 1:50 000 DEM but is subject to availability.
- The raw DEM data exists on backup 8mm tapes.

Update:

- A DEM mosaic was created by Alberta Fire Protection which incorporates Jasper 1:50 000 DEM with provincial 1:20 000 DEM. This data will be made available to FMF for this project.

Note:

- For the Alberta crown land, TINs (Triangulated Irregular Networks), are available for each 1:20 000 map sheet.

Recreational Activity Sites

Shows available data for recreational activities.

- Have provincial base 1:20 000 data containing campgrounds, forest recreation areas and ski areas as points.
- Jasper has full detailed recreation inventory on NTS 1:50 000. Updating is being done by GPS.
- In the Willmore Wilderness Area, most data is currently on paper maps at a scale of 1" to a mile. Some data exists on 1:20 000 maps.

Note:

- Industrial Forestry Consultants Ltd. in Prince George, BC, are currently digitizing trails and campsite data for the Willmore Wilderness Area.
- Weldwood may have a campsite inventory.

Land Dispositions

Shows which kind of leases exist in the project area.

- Weldwood has data dated up to 1995. Foothills Model Forest does not have it on site yet.
- Province of Alberta has LSAS on crown land by quarter section.

Notes:

- Darren Tapp can provide surface leases.
- Rhonda Wehrhahn can provide subsurfaces leases
- Grazing leases may be available.

Stand Origin

Shows the extent of the available stand origin data.

- FMU corridor has stand data collected in 1997.
- Weldwood and Jasper have data with an unknown date of collection.

Notes:

- All data currently available at Foothills Model Forest.
- Willmore Wilderness has no stand origin data.
- Weyerhaeuser and ANC stand origin data existence is unknown.

Soils Inventory

Shows the extent and quality of the available soils data.

- FMF has detailed Weldwood FMA soils data.
- FMF has coarse soils data from the Yellowhead Ecosystem Working Group (YEWG).
- Soils data for the FMU Corridor exists in paper format. Weldwood may have those paper maps.
- No soils data from Jasper or Willmore. But they fall under the extent of the YEWG soils data.