

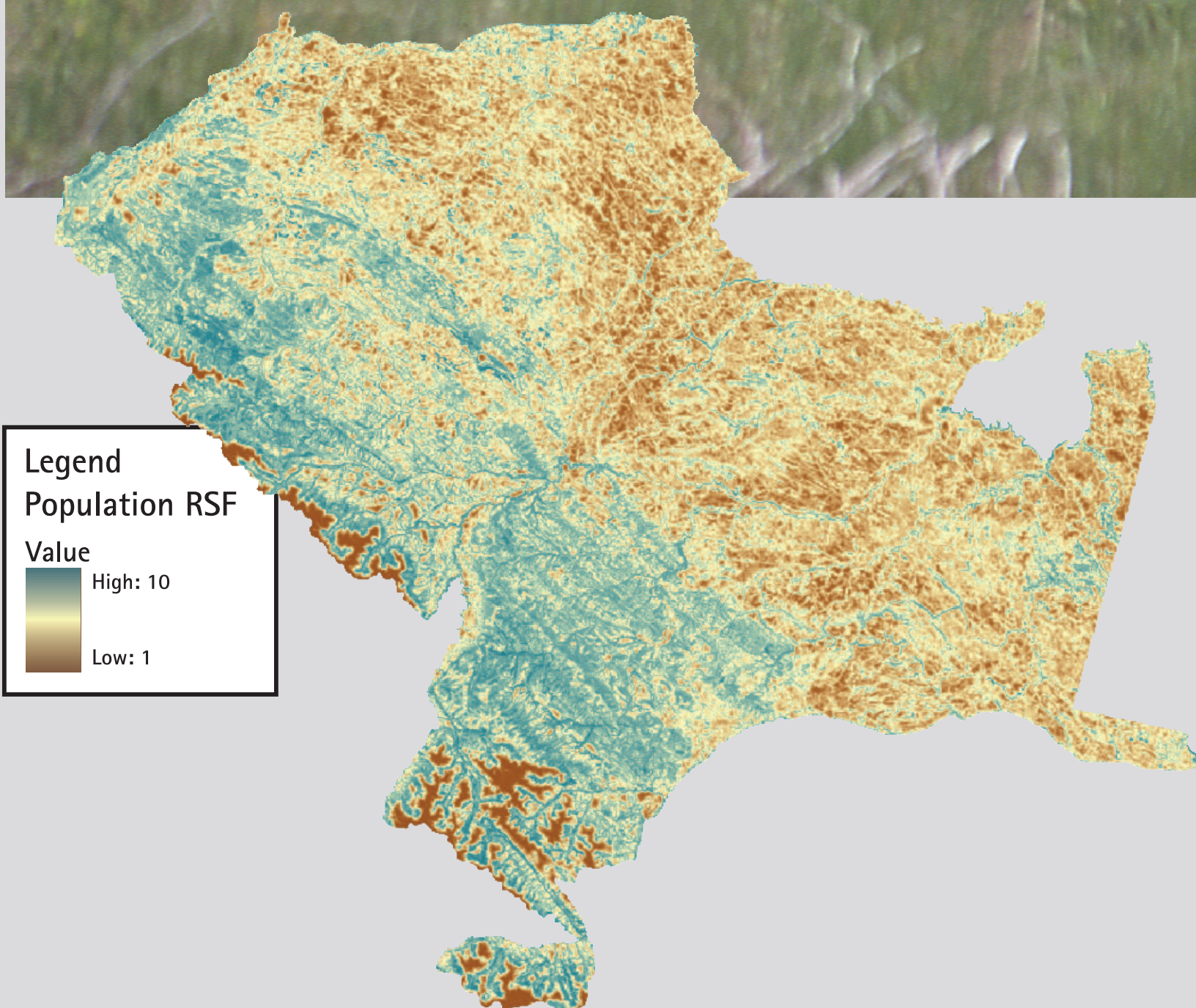


# GIS PROGRAM

## FOOTHILLS MODEL FOREST



The Foothills Model Forest Geographic Information System (GIS) Program is doing or supporting incredibly innovative work. Most noteworthy are the maps and models that the grizzly bear research program is developing. The maps and models incorporate many different layers of data (grizzly bear movement points, vegetation, industrial activity, roads, topography) that influence grizzly bear use of the landscape. Few organizations have data of this magnitude or quality; fewer have captured them in a practical tool that a land surveyor or forester can use. Foothills Model Forest's sound research coupled with the technological and intellectual capabilities of the GIS Program are contributing to the conservation of one of Canada's most charismatic species. Stated another way, Foothills Model Forest is innovating the way one of Alberta's wildest creatures is being cared for. It is almost an oxymoron — satellites, bits and bytes play a critical role in how the wild and elusive grizzly bear is being conserved.



**THE FOOTHILLS MODEL FOREST** At 2.75 million hectares you could call it one of the largest laboratories on the continent. The Foothills Model Forest land base includes all of Jasper National Park, Weldwood of Canada Limited, Hinton Division's working forest, Willmore Wilderness Park and other public lands.

Alberta Sustainable Resource Development, Jasper National Park, Natural Resources Canada through the Canadian Forest Service and Weldwood of Canada Limited, Hinton Division are sponsoring partners of the Foothills Model Forest. Each sponsoring partner makes a five-year commitment of financial and human resources to the Foothills Model Forest research programs. In addition to our sponsoring partners, we appreciate the support of over ninety other organizations. Their continued support in Phase III (2002-2007) is a testament to the value of our research and development. Equally noteworthy is our partners' use of world-class science when making decisions about forest management policy and practice. This approach better ensures that communities, economies and forests provide opportunities for present and future generations.



We welcome inquiries:

Box 6330, Hinton AB T7V 1X6  
T: (780) 865-8330  
F: (780) 865-8331  
fmf@fmf.ab.ca  
[www.fmf.ab.ca](http://www.fmf.ab.ca)

