



Foothills Research Institute GIS Data Management & Sharing

November 17, 2008 – Hinton, AB

Presented by: Julie Duval & Katie Yalte



Today's Agenda

- **GIS Program**
- **Spatial Data Inventory**
- **Data Sharing**
- **Next Steps**
- **Questions**

Program Goals - GIS



- 1. Provide exceptional GIS and data management support services for FRI program areas**
- 2. Research, plan, and evaluate GIS technology, software, and hardware**
- 3. Efficient data sharing, data management & knowledge transfer**



GIS Program

STAFF

- **3 full-time GIS Staff - GIS Program**
- **1 full-time GIS Staff - Aboriginal Involvement Program**
- **Work also with GIS contractors/researchers/students**
- **Approximately 7 regular GIS users on staff**



GIS Program

SOFTWARE/HARDWARE

- **ArcGIS 9.2 /9.3**
- **ArcIMS 9.1**
- **Use Microsoft Access to manage our non-spatial data**
- **Use file-based geodatabases to manage our spatial data**
- **> 1TB of data on server (imagery/orthophotos)**



Program Support Areas:



- **Natural Disturbance**
- **Foothills Stream Crossing Association (FSCA)**
- **Foothills Landscape Management Forum (FLMF)**
- **Foothills Growth and Yield (FGYA)**
- **Grizzly Bear**
- **Mountain Pine Beetle Ecology**
- **Jasper National Park**
- **Adaptive Forest Management**
- **Fish and Watershed**



GIS Spatial Data Inventory



- **Document the spatial data holdings of FRI**
- **The spatial data inventory will**
 - **inform staff and partners of available data**
 - **enhance data management**
 - **reduce data redundancy**
- **Will help improve inter-program data sharing and collaboration**



Data Sharing



Parks
Canada

Parcs
Canada

- **Data is shared between FRI and:**
 - **Alberta Sustainable Resource Development**
 - **Jasper National Park**
 - **West Fraser Mills**
 - **Town of Hinton**
 - **Researchers**
 - **Contractors**
 - **universities etc...**

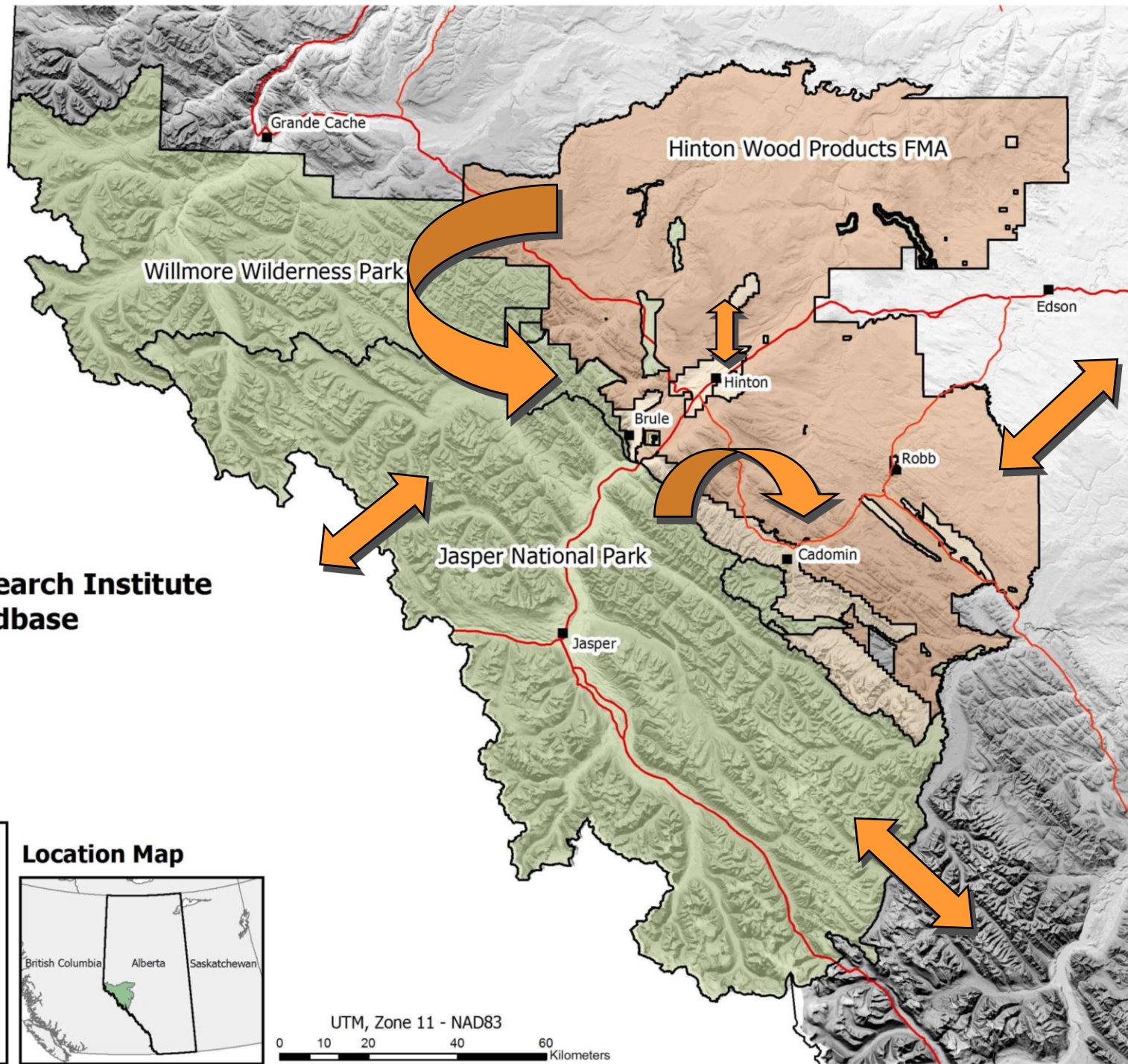


UNIVERSITY OF
ALBERTA
EDMONTON, ALBERTA, CANADA





Foothills Research Institute Landbase



Landbase

- Community
- Highway
- Alberta Crown Units
- Hinton Wood Products FMA
- Protected Areas

Location Map



UTM, Zone 11 - NAD83

0 10 20 40 60 Kilometers

Data Sharing

- **Program areas dependent on information sharing**
- **Data sharing agreements**
 - **FRI → Partners**
 - **Partners → FRI**
- **Various levels of data access and confidentiality**



Next Steps...

- ★ **Data sharing agreements with partners will be critical to the future of online mapping/GIS systems**
- ★ **Work with the provincial and federal government on common data sharing initiatives**
- ★ **Exciting potential for better regional landuse decisions through improved information sharing!**





Questions?

<http://foothillsresearchinstitute.ca>