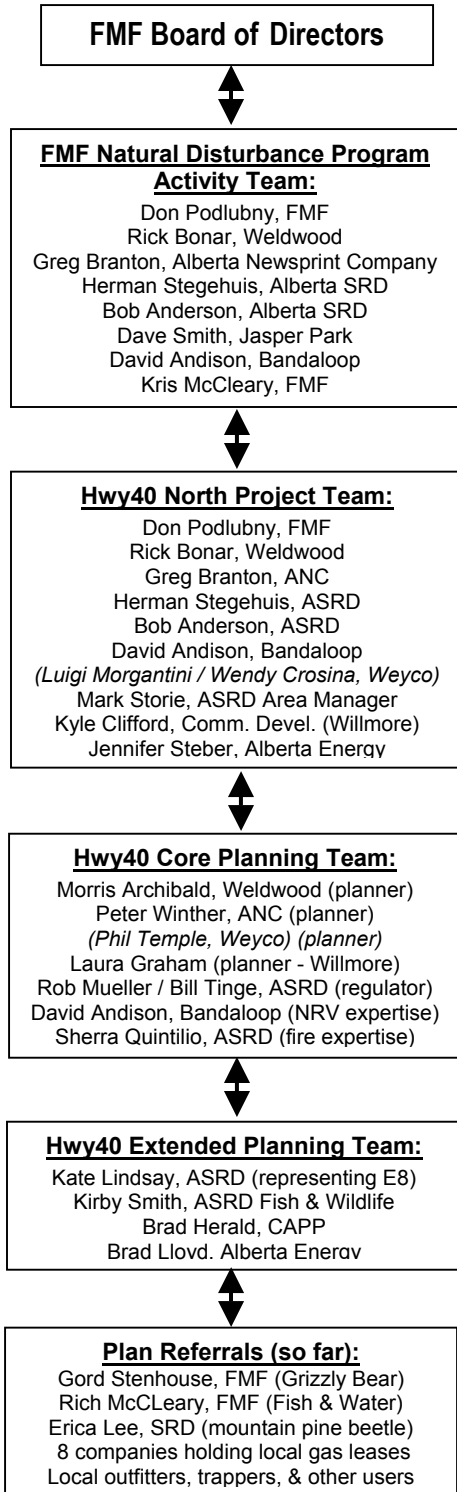


## Who is Involved & How?



Highway 40 North is a Foothills Model Forest (FMF) project, but it is also an operational plan. Considerable thought went into designing teams and assigning responsibilities such that the *project* objectives for the model forest could be met with minimal interference to the standard *planning* requirements for the partners.

Structurally, the project is part of the Natural Disturbance (ND) Program - one of eleven program areas at the Foothills Model Forest. The project is part of the ND work plan for 2003/04 (available from the FMF), approved by both the FMF Board of Directors and the ND Activity Team.

To initiate the project, the ND Activity Team formed a Project Team, who established the location and size of the study area, the partner base, and the overall project guidelines. The Hwy40 Project Team includes most of the ND Activity Team, the Alberta Sustainable Resource Development (SRD) Area Manager for Foothills (responsible for approving the operational plans), and representatives from Weyerhaeuser, Alberta Community Development (for the Willmore Wilderness Area), and more recently, Alberta Energy. Thus, representatives on the Project Team also serve as direct links back to their respective organizations in terms of planning. This group was also responsible for creating the composition and "rules" for the core Planning Team.

The Planning Team's responsibilities are to develop and deliver an operational-scale disturbance plan for the area. The core Planning Team thus includes planners from each of the four land management agencies involved, a representative from the Hinton Area, a specialist in prescribed fire planning, and a specialist in natural patterns. This group quickly expanded to include individuals that could provide input on key local issues such as caribou and energy sector development. The planning team has also begun the process of contacting other experts and agencies through the "referral" process as input to the final plan.

There has already been some movement of people and agencies within the project, the most notable being the transition of forest management responsibilities in the northwest corner of the study area known as "E8". As a result, Weyerhaeuser (Grande Cache) no longer sits on either the Project or Planning teams, and we are in the process of engaging the new forest managers, Foothills Forest Products. Furthermore, as the process matures, we fully anticipate that the list of referrals will continue to grow.

So, in fact, many people are already involved in the project at many different levels. But perhaps the most valuable lesson we have learned so far is that the effort to design a rigorous structure of roles and responsibilities for a highly complex project pays off.