



The Foothills Research Institute

“Where Research Makes a Difference”

Mountain Pine Beetle Workshop

May 22-23, 2008

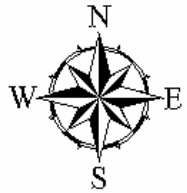


Our Mission:

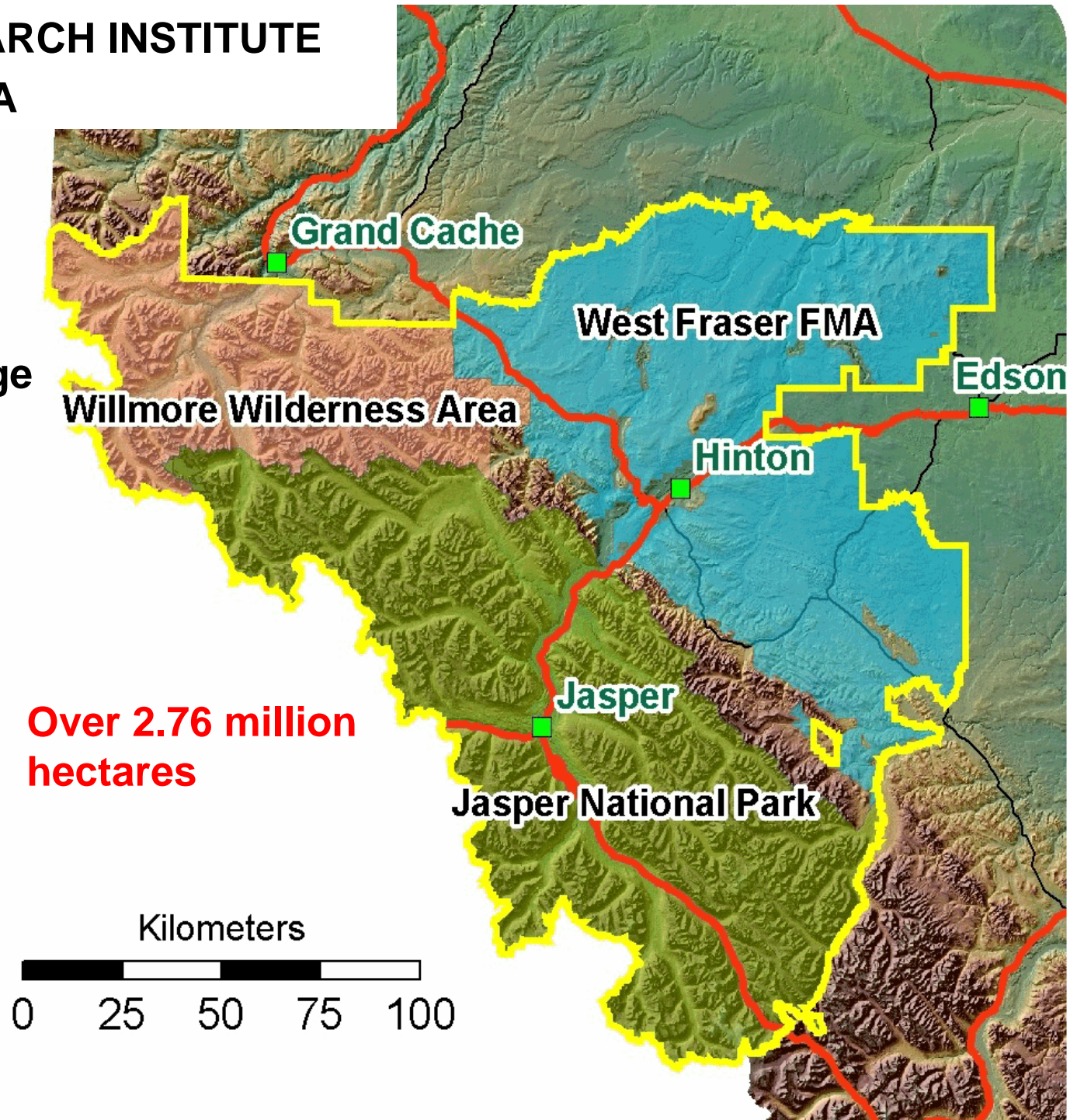
The Foothills Research Institute is a unique community of **partners** tied to the land and its people through a **common** concern for the welfare of the land and its resources.



FOOTHILLS RESEARCH INSTITUTE CORE STUDY AREA



Building knowledge
on a defined
landscape



Sponsoring Partners



Parks
Canada

Parcs
Canada



West Fraser

Foothills Energy Partners

Encana Talisman Petro-Canada

ConocoPhillips CNRL

Sponsor Core Funding 2008/09: \$1,000,000

Leveraged Funding 2008/09: \$7,000,000



PARTNERS Cont.



Environment Canada

Environnement Canada



What We Do...

- Applied research
- Knowledge and management tool development
- Communications and Extension

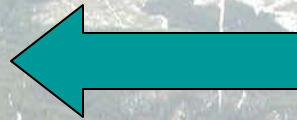
..... to enable sustainable forest and land management on the research lands and beyond

How We Do It...

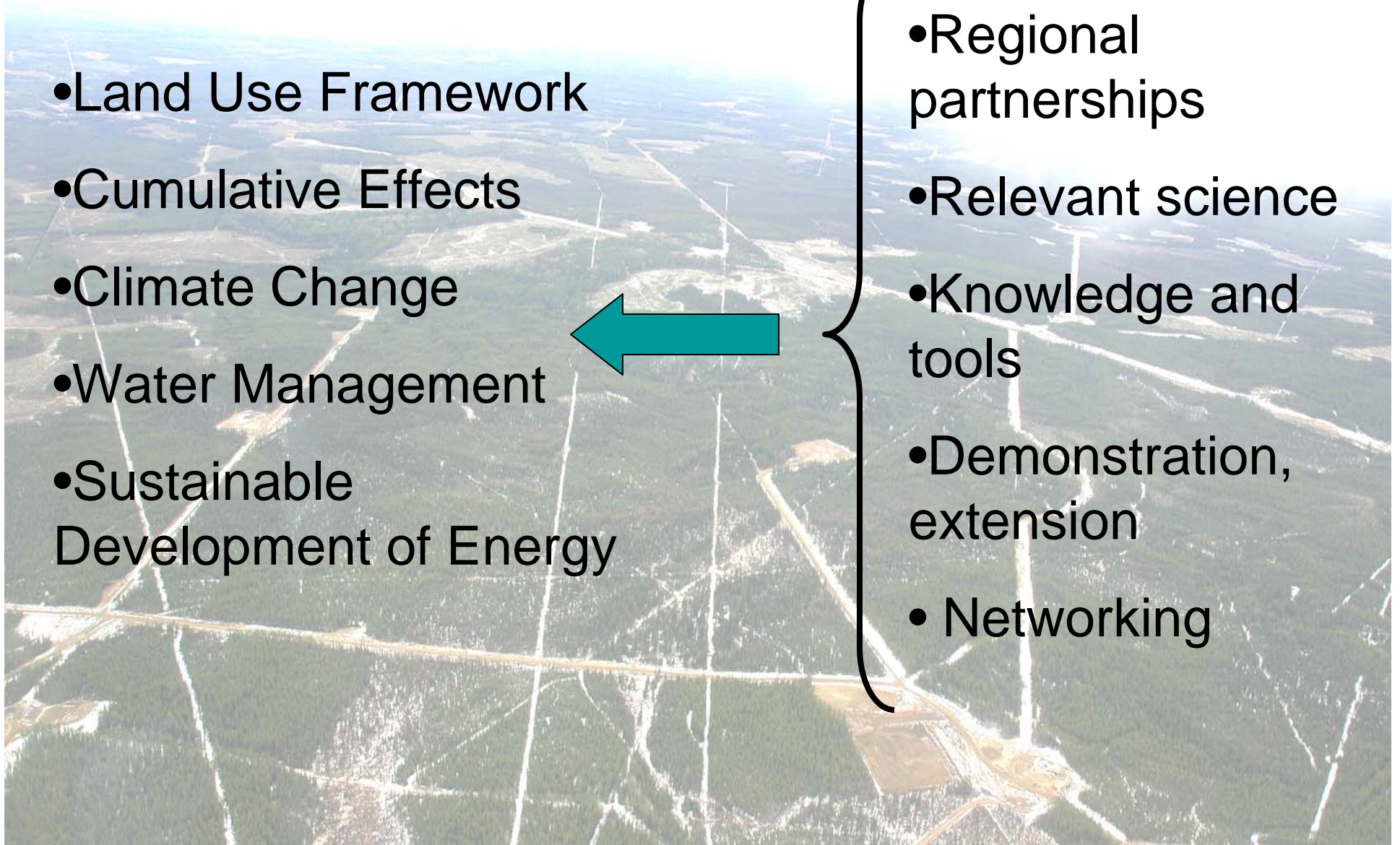
- Partnership
- Address common needs
- Robust governance
- Strong Administration
- Focused, relevant research
- Develop knowledge and tools
- Communications and Extension
- Networking

Linkages to New Government Ministerial Priorities

- Land Use Framework
- Cumulative Effects
- Climate Change
- Water Management
- Sustainable Development of Energy



- Regional partnerships
- Relevant science
- Knowledge and tools
- Demonstration, extension
- Networking



Core Programs... Over 40 research 'projects'



Grizzly Bear

Local Level Indicators

Natural Disturbance

Fish and Watershed

Aboriginal Involvement

Social Science

Adaptive Forest Management

Communication and Extension

Geographic Information Systems

**Foothills Landscape Management
Forum**

Foothills Growth and Yield Association

Foothills Stream Crossing Association

Mountain Pine Beetle Ecology

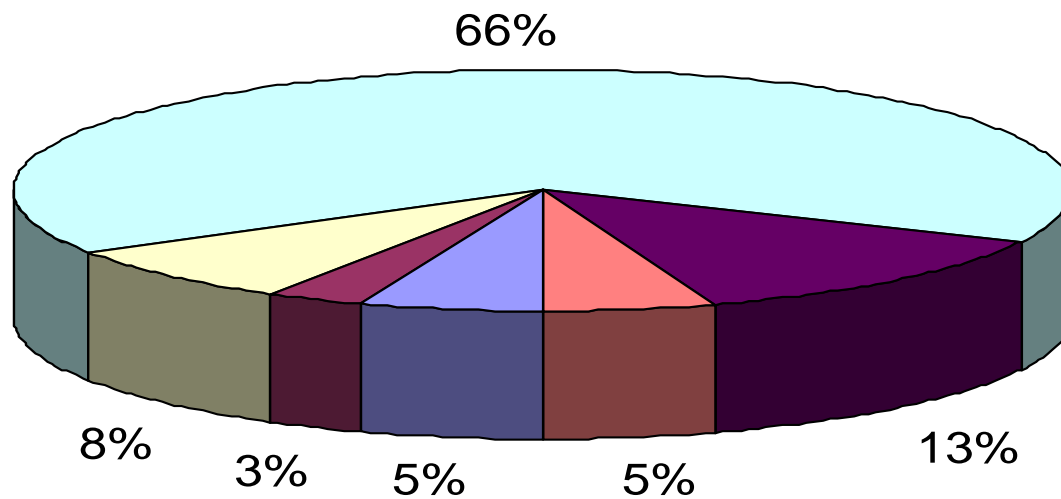
New Programs and Initiatives

- Climate Change
- Water
- Forest Communities Program
- Circumboreal Initiative
- Yellowhead Ecosystem Management Group



Maximizing Return On Research Investment....

2007-08 Budget of
\$5.45MM



- Infrastructure and Administration
- GIS Support
- Communications and Extension
- Research
- Associations
- Aboriginal Program

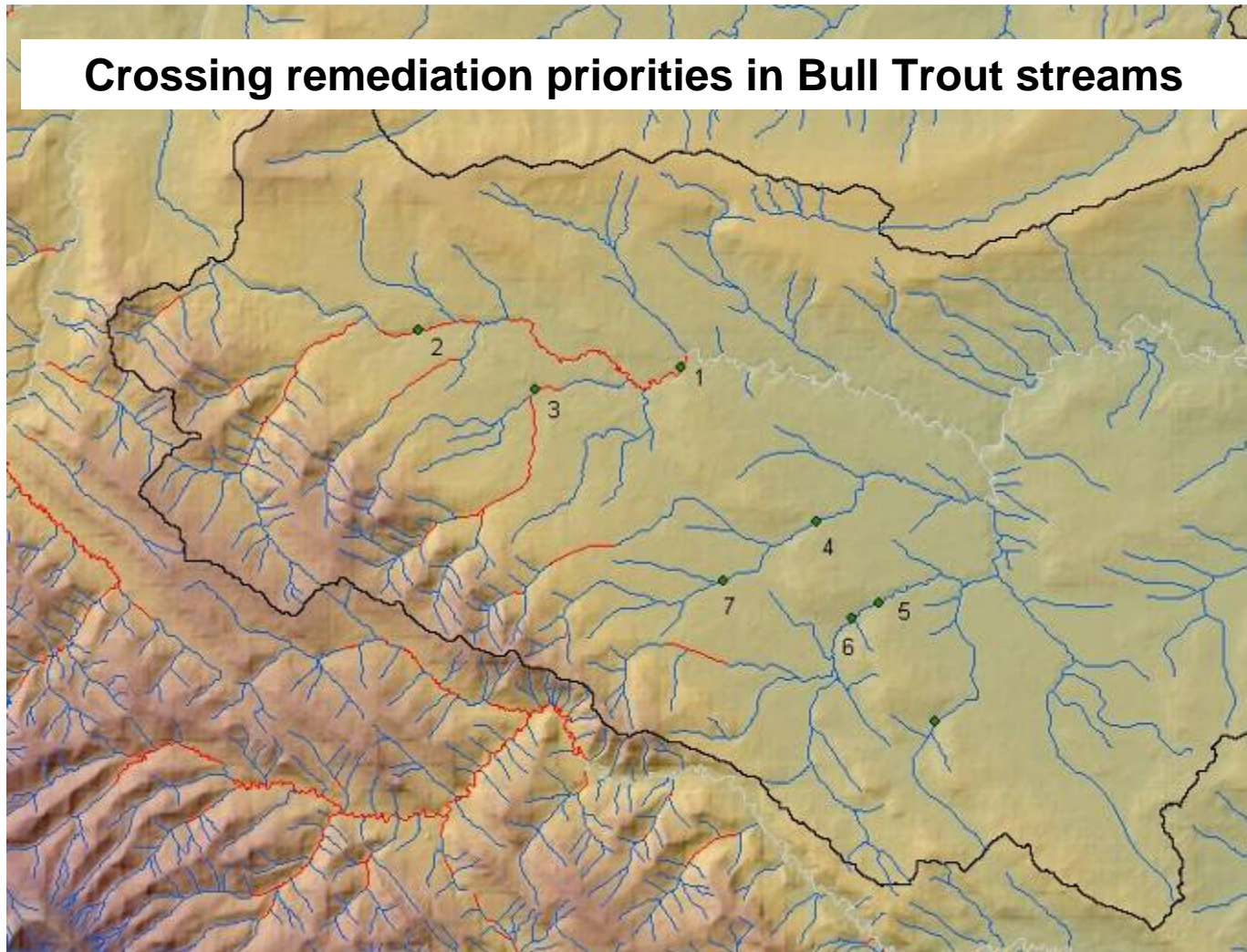
Research Growing into Practice

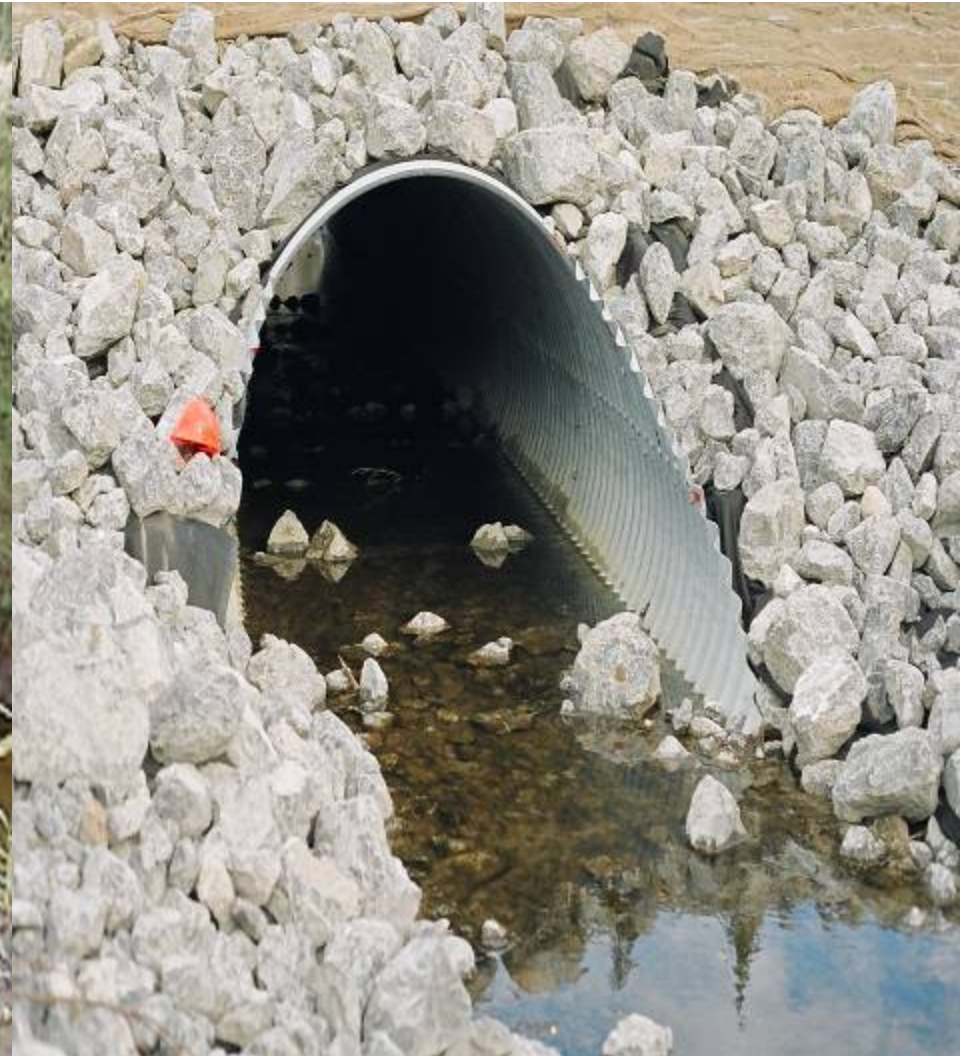
- a few examples:

- Association work
 - Foothills Stream Crossing Association
 - Foothills Landscape Management Forum
- Natural Disturbance Research / Application
- Aboriginal Involvement Program

Foothills Stream Crossing Association

- A Partnership in water quality and fish habitat improvement
- Focusing on stream crossing rehabilitation



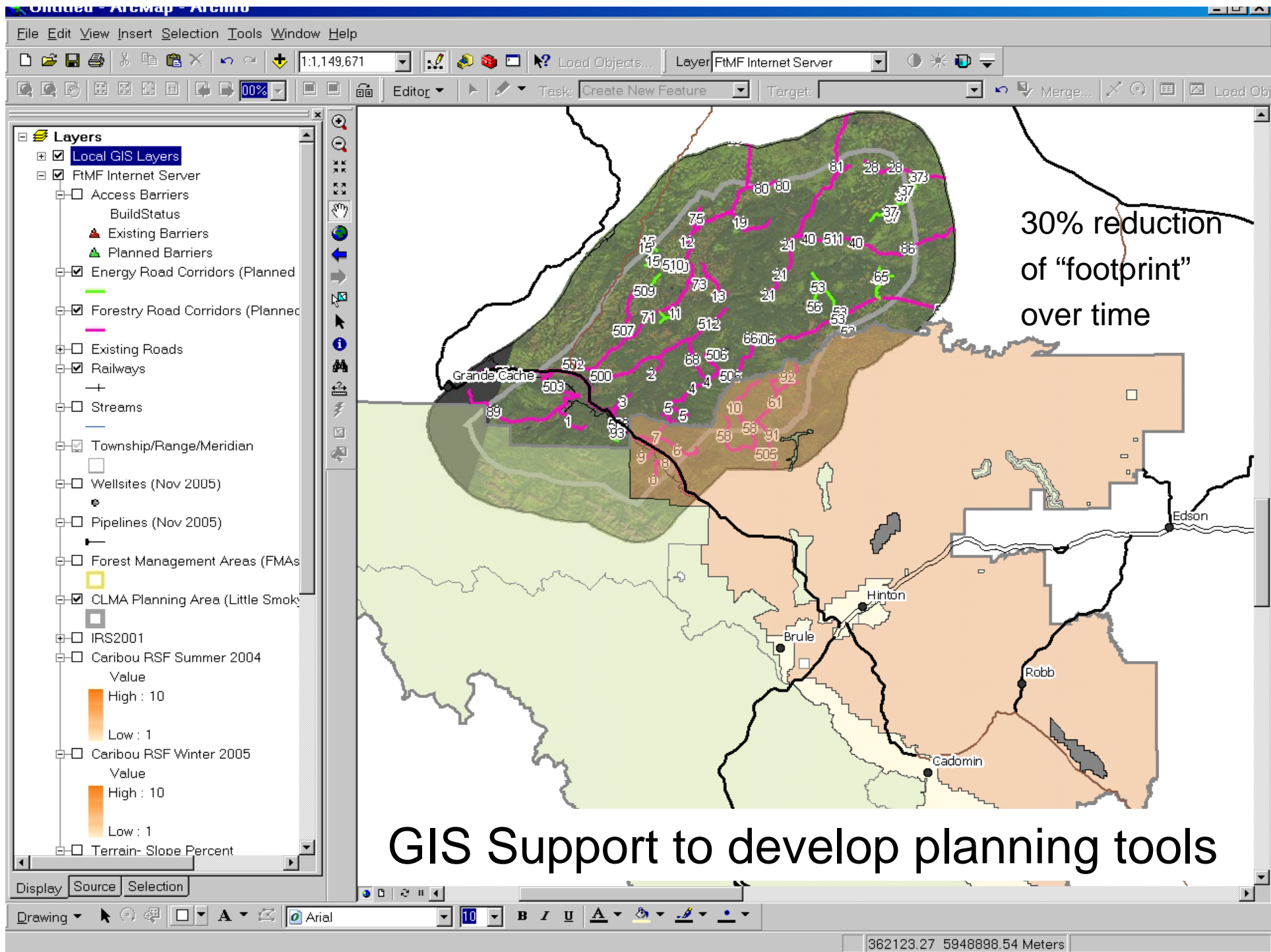


**Department of Fisheries and Oceans
promoting program
across the West**

Foothills Landscape Management Forum

- A Partnership of government, forestry, energy and aboriginal groups
- Focused on joint efforts to improve caribou conservation and survival





Natural Disturbance Research and Demonstration

A “Coarse Filter” biodiversity program examining historic patterns of forest development on a fire-dominated landscape

Using this knowledge to improve practice and reduce overall footprint

New ND-based Harvest Patterns

The
“Natural” way



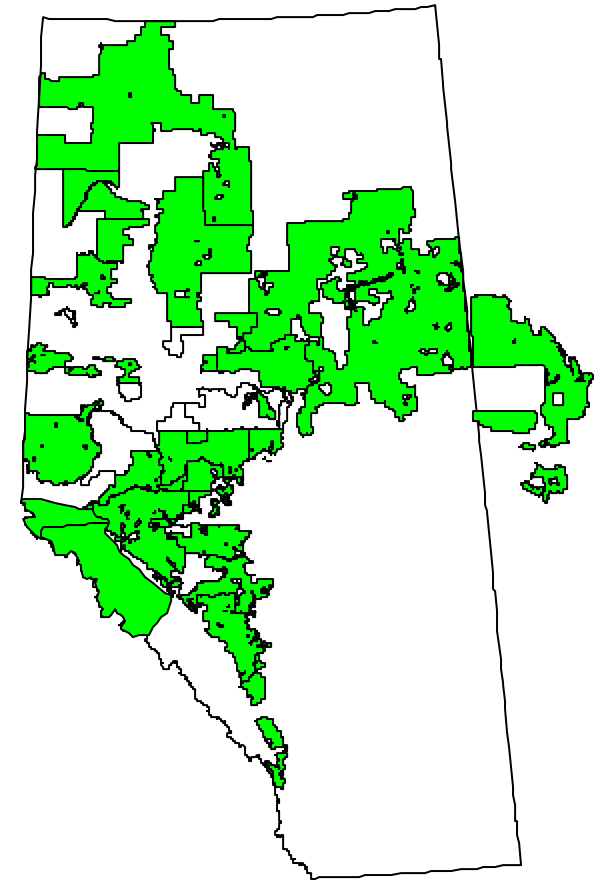
Traditional
Harvest Patterns



Is the ND Program Having an Impact?

90% of forestland management agencies in Alberta are using ND research findings to improve practices

- Major reduction in road densities (footprint)
- Public acceptance



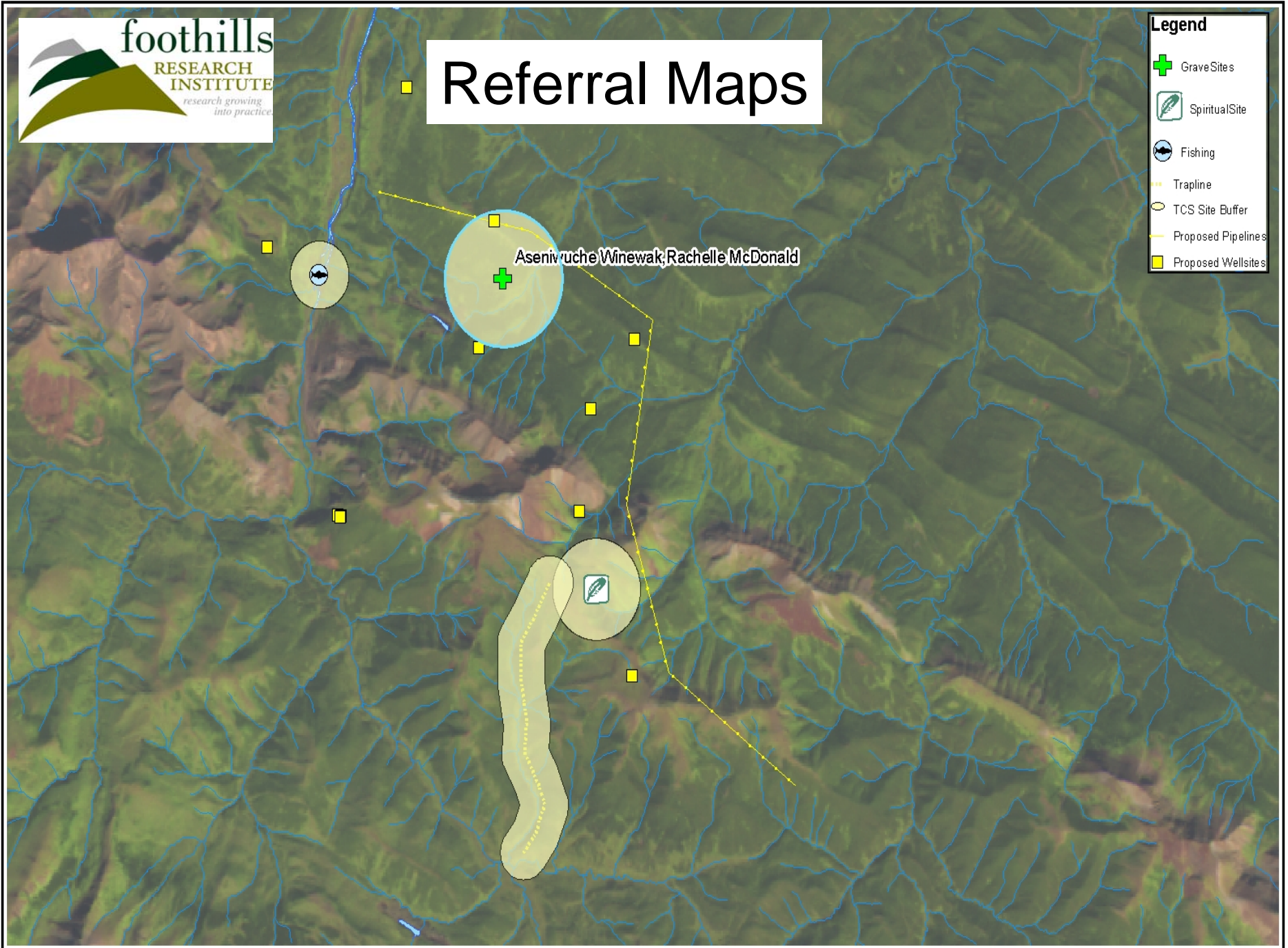
Aboriginal Involvement Program

Building the Basis for Consultation

- a. Standardized Multi-community Traditional Cultural Study (2002)
- b. Secure community- specific proprietary database at FRI
- c. Industry Community Referral Process (2006)
- d. Support Community – Industry site visitations (2006)

Referral Maps

- Legend**
- GraveSites
 - SpiritualSite
 - Fishing
 - Trapline
 - TCS Site Buffer
 - Proposed Pipelines
 - Proposed Wellsites



Looking Forward...

Building on 15 years of success;

- Robust and relevant organization
- Regional presence; provincial and national scope
- Networking proficiency
- Foothills Research Institute Business Strategy
(2007 – 2012)
 - Increased data management capability
 - Increased networking capability
 - Expanding climate change, MPB and water research
 - Responds to Industry and Provincial Government Priorities
 - Strong linkage of FRI Program Areas



Mountain Pine Beetle Ecology Program

- Natural disturbance and stand dynamics research, which includes the relationship of fire, mountain pine beetle and the eventual community impacts
- Understanding forest management implications and options associated with mountain pine beetle infestations
- Quantification of the short and long-term changes to the fire regime that includes fire intensity and severity in mountain pine beetle infested stands
- Two Projects – the effect of mountain pine beetle on forest ground water hydrology and monitoring the effect of mountain pine beetle on forest vegetation



A scenic view of a mountain range with a dense forest in the foreground and a communication tower visible in the distance. The mountains are rugged and have patches of snow. The forest is a mix of evergreen and deciduous trees. The sky is overcast.

MPB Program Funding Sources

- AFRI
- SRD
- FRIAA

A Partnership that produces results....



A scenic landscape photograph featuring a large, rugged mountain range in the background with patches of snow on its peaks and slopes. The middle ground is dominated by a dense, dark green coniferous forest. In the foreground, a tall, slender communication tower with a red top section is visible, rising above the trees. The sky is overcast and grey.

Thank you.....

Questions ?