

Foothills Research Institute

Mountain Pine Beetle Ecology Program

Work Shop May 22 & 23 2008



Mountain Pine Beetle Ecology Program

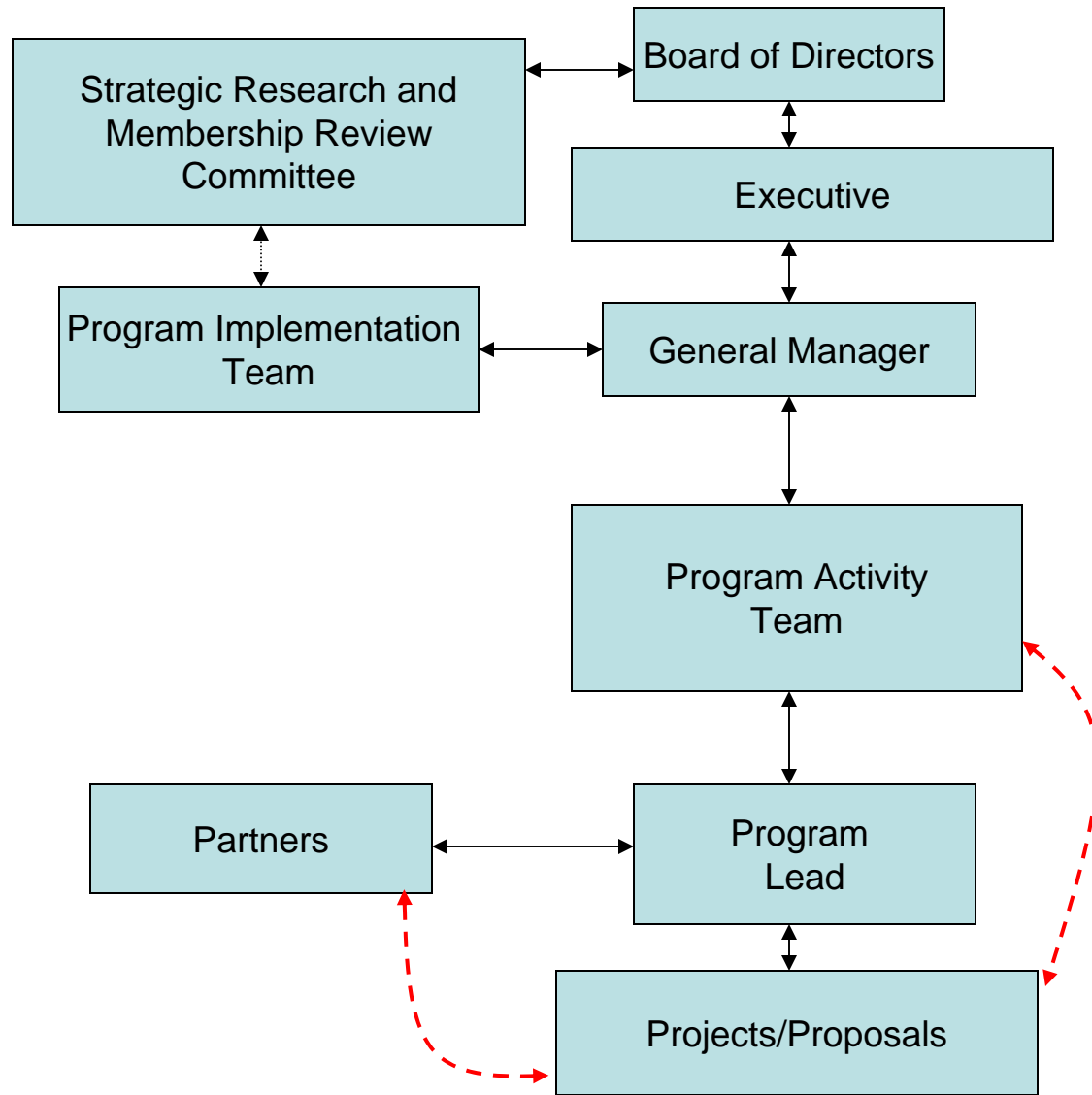
- **Three year program, started 2007-08**
- **Established in the first year;**
 - **Multi discipline Activity Team**
 - **Terms of Reference**
 - **Draft 5 year plan**
 - **Support to two projects**
 - **Supplemental funding for projects**



Mountain Pine Beetle Ecology Program Activity Team

Don Podlubny
Bob Udell
Dennis Quintilio
Barry White
Richard Briand
Pat Wearmouth
Joyce Gould (Kyle Clifford)
Steve Otway
Mark Storie
Dave Andison
Rob Gibbs
Ray Ault
George Hamilton
Daniel Lux
John Stadt





Mountain Pine Beetle Ecology Program Research Themes

- 1. Natural disturbance *and* stand dynamics research, which includes the relationship of fire, pine beetle and the eventual community impacts.**
- 2. Understanding forest management implications and options associated with pine beetle infestations.**
- 3. Quantification of the short and long-term changes to the fire regime that includes in fire intensity and severity in beetle infected stands.**



Mountain Pine Beetle Ecology Program Projects

- 1. Effects of Mountain Pine Beetle attack on hydrology and post-attack vegetation and hydrologic recovery in lodgepole pine forests in Alberta.**
- 2. Monitoring and Decision Support for Regeneration Management in a Mountain Pine Beetle Environment.**



Mountain Pine Beetle Ecology Program Work Shop

ISSUES:

1. Ability to capture all of the BC knowledge around MPB as regards;
 - Industry
 - Governments
 - science
2. What research, processes, and actions can be fast tracked based on existing knowledge (next steps for Alberta)
3. If issues are land based are there differences between public and private?



Issues cont.

4. Implications of fire on MPB affected forests;
 - Fire event time lines
 - Values at risk
 - Communities
5. Infrastructure costs to access salvage:
 - New road construction
 - Repairs to existing roads after extraction
 - Crossings; water, pipelines, power lines
5. Threat to Canada's pine forests
7. Coordination between;
 - Governments
 - Researchers
 - Industries



Mountain Pine Beetle Ecology Program Work Shop

BREAKOUTS:

Break Out 1 & 2: Worst case scenario; Massive invasion and establishment of MPB from BC. What would be the major issues to Alberta and Albertans. Brain Storm the issues in your group, identify the top three but keep the rest of the list.

Break Out 3 & 4: From the top three issues identified previously now identify the research priorities. Here are three research theme areas you may want to consider of please feel free to add your own;

- Implications to Forest Management as impacted by mpb infestation
- Best practices for beetle control and policy support for present and future management
- Implication to economics and social values, locally, regionally , provincially and nationally.

