



Mountain Pine Beetle Ecology Program

Workshop Photo Gallery

Lister Hall, University of Alberta, Edmonton, AB

March 26th, 2010



Stephen Entwisle, Blue Source Canada



Stephen Kull, Canadian Forest Service



Stephen Kull, Canadian Forest Service



Forest Mitigation Options

- Global wood harvest transfers ~750 Mt C/yr to meet society's needs.
- Canada harvests 46 Mt C/yr (average over 2000 – 2005).
- Mitigation options include
 - larger retention of C in harvested wood products.
 - increased use of wood products instead of more fossil-energy intensive materials (e.g. steel)
 - reduce wood disposal in landfills (reduce CH₄ emissions)
 - increased use of woody biofuels to substitute fossil fuels

Stephen Kull, Canadian Forest Service



Stephen Kull, Canadian Forest Service



Doug Sklar, AB Sustainable Resource Development

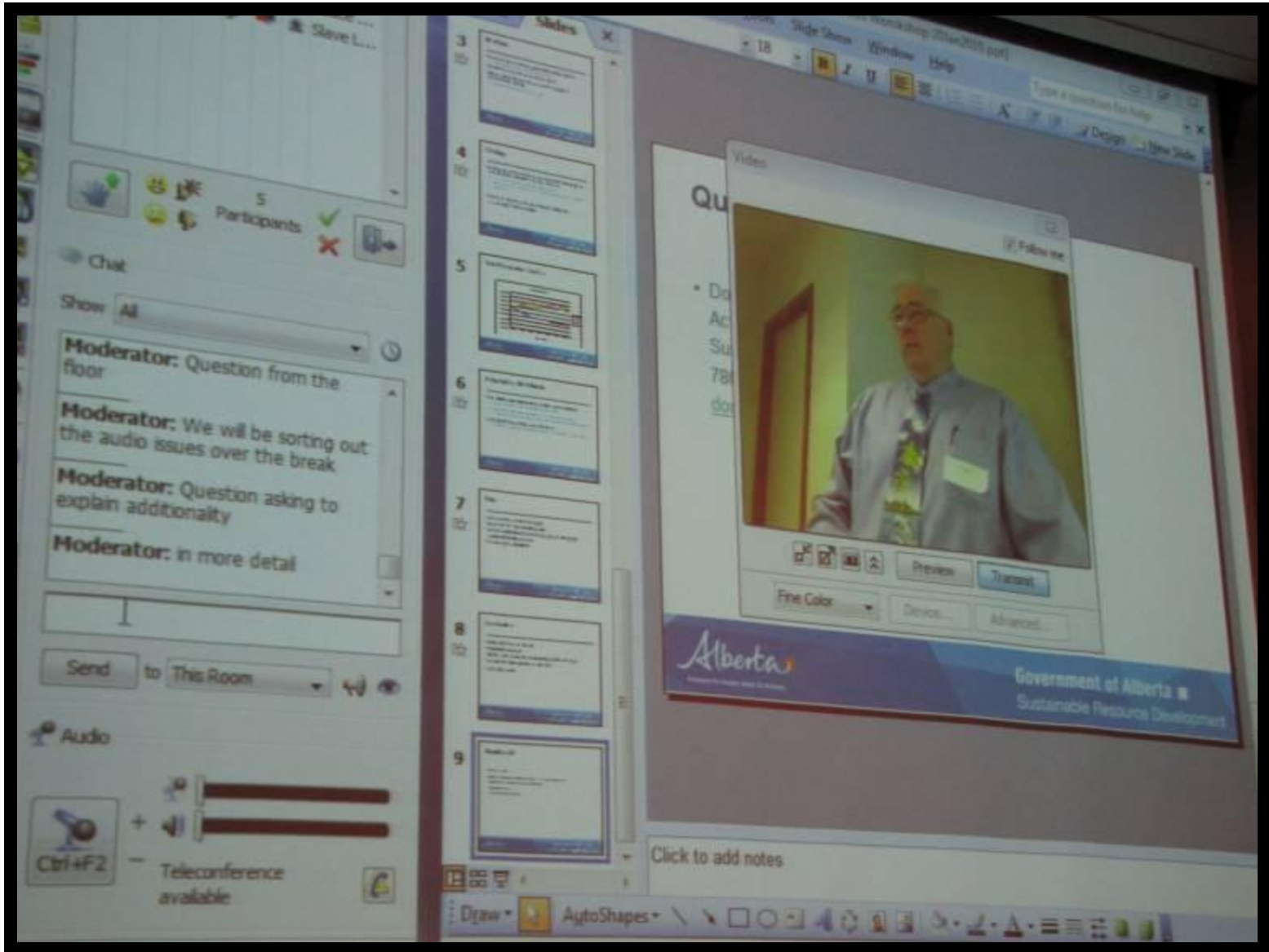


Doug Sklar, AB Sustainable Resource Development



Doug Sklar, AB Sustainable Resource Development





Video Conferencing



Networking



Networking

Why?

- Emissions trading is a part of many climate change systems.
- one tool in the toolbox for seriously addressing climate change.
- used to address other environmental issues – such as acid rain (US Acid rain program is an arguably successful cap and trade system for NO_x and SO₂ emissions).
- Typically, emissions trading results in reductions at a lower cost, by providing the opportunity for innovation and technology development.



foothills
RESEARCH
INSTITUTE


FOOTHILLS RESEARCH INSTITUTE IS A LEADER IN DEVELOPING INNOVATIVE SCIENCE AND KNOWLEDGE FOR ASSURED RESOURCE MANAGEMENT IN THE MOUNTAIN LANDSCAPE THROUGH DIVERSIFIED AND ACTIVE ENGAGED PARTNERSHIPS.

FOOTHILLS RESEARCH INSTITUTE IS A LEADER IN DEVELOPING INNOVATIVE SCIENCE AND KNOWLEDGE FOR ASSURED RESOURCE MANAGEMENT IN THE MOUNTAIN LANDSCAPE THROUGH DIVERSIFIED AND ACTIVE ENGAGED PARTNERSHIPS.





Tanya Maynes, Climate Change Central



ALBERTA AND THE ENVIRONMENT

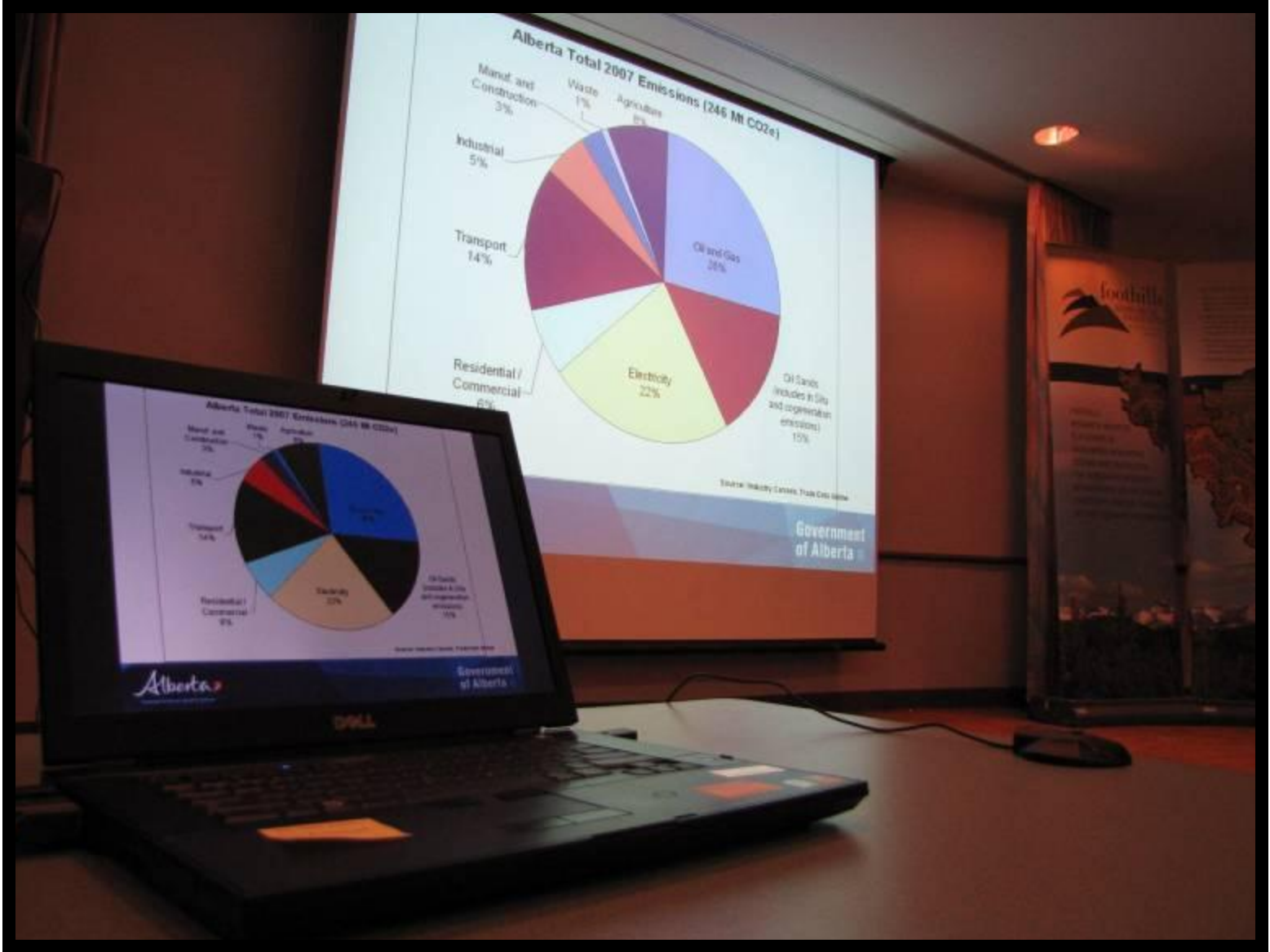
Climate Change Strategy and Regulatory System

January 8, 2010

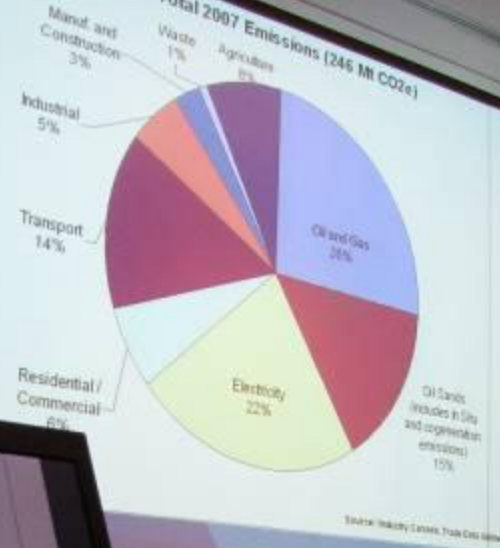
Alberta

Freedom To Create. Spirit To Achieve.

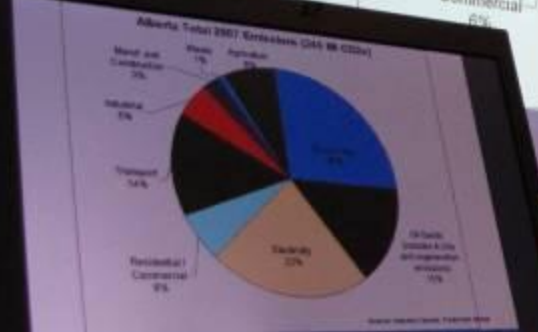
Government
of Alberta



Alberta Total 2007 Emissions (246 M CO2e)



Government of Alberta



Alberta

Government of Alberta



Creating an Offset Credit

Phase:

Project Development

Project Implementation

Project Reporting

Offset Submission (Regulated Facility/Buyer)

Steps:

Offset Project Plan

- Scope
- Baseline and Project
- Quantification Plan
- Monitoring Plan
- QA/QC Plan

Data Management

- Monitoring and Data Collection

Project Report

- Report/GHG assertion
- Verification Statements

To AB Environment

- Regulated Emitter's Compliance Report:
- Project Report
- GHG Assertion
- Verification Statement

Tools:

Gov't Approved Protocol

Project Registration on Alberta Offset System Registry


Verification (Third Party Verifier)

(Third Party Verifier)

- Verification Plan
- Verification Statement
- Conflict of Interest Checklist
- Statement of Qualifications

Forestry Offsets - Blue Source Services

- Canada's leading marketer of offsets
- Policy/protocol advocacy
- Protocol development
- Data monitoring, management
- Project documentation
- Verification/registration
- Post-sale support
- Project investment

 Blue Source
Canada

 foothills
RESEARCH
INSTITUTE



FOOTHILLS
RESEARCH INSTITUTE
IS A LEADER IN
DEVELOPING INNOVATIVE
SCIENCE AND KNOWLEDGE
FOR INTEGRATED FORESTRY
MANAGEMENT ON THE FOREST
PLANTATION THROUGH SHARE AND
ACTIVELY ENGAGED PARTNERSHIPS



