

Walking the line: investigating ecological characteristics relating to wildlife linear feature use

E. Tattersall^a, K. Pigeon^{b,c}, D. MacNearney^d, L. Finnegan^a

^afRI Research Caribou Program, Hinton, AB; ^bYellowstone to Yukon, Canmore, AB; ^cUniversity of Northern British Columbia, Prince George, BC; ^dEnvironment and Climate Change Canada, Ottawa, ON



Background

In the western boreal forest, linear features from industrial development are central to the decline of woodland caribou (*Rangifer tarandus*) due to their use by caribou predators¹ (wolves, *Canis lupus*; bears, *Ursus arctos* and *U. americanus*) and alternate prey species^{2,3} (moose, *Alces alces*; deer, *Odocoileus hemionus* and *O. virginianus*; and elk, *Cervus canadensis*). Linear feature restoration has been identified as a critical component of caribou conservation; however, for restoration to be effective it must rehabilitate specific linear feature characteristics that promote line use by these species.⁴

Objectives

- Investigate which local habitat characteristics correspond to linear feature use by caribou predators and alternate prey species
- Assess linear feature use for ungulates and bears as a function of vegetation occurring on lines and at line edges

Results

Chinchaga

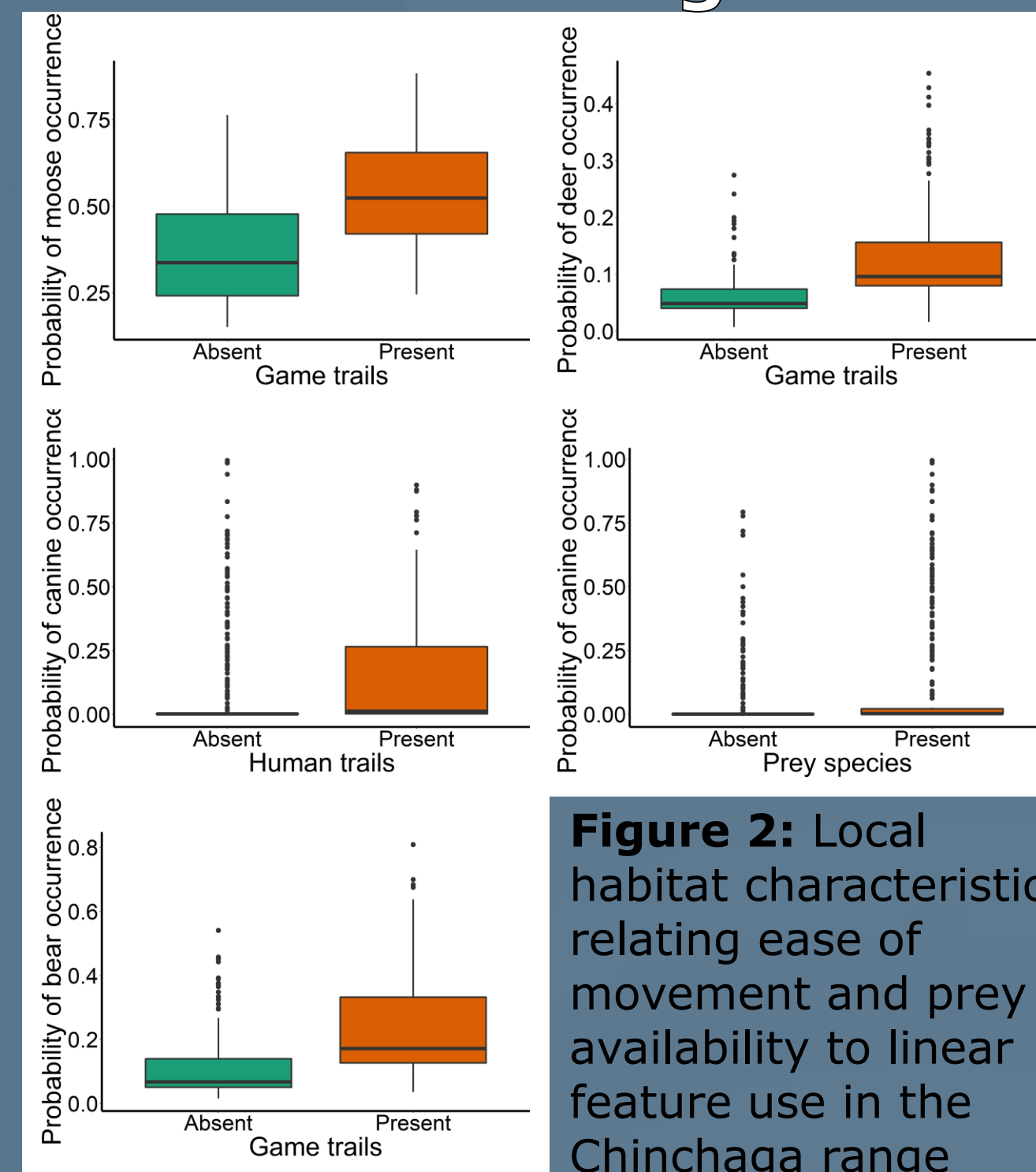


Figure 2: Local habitat characteristics relating ease of movement and prey availability to linear feature use in the Chinchaga range

West-Central

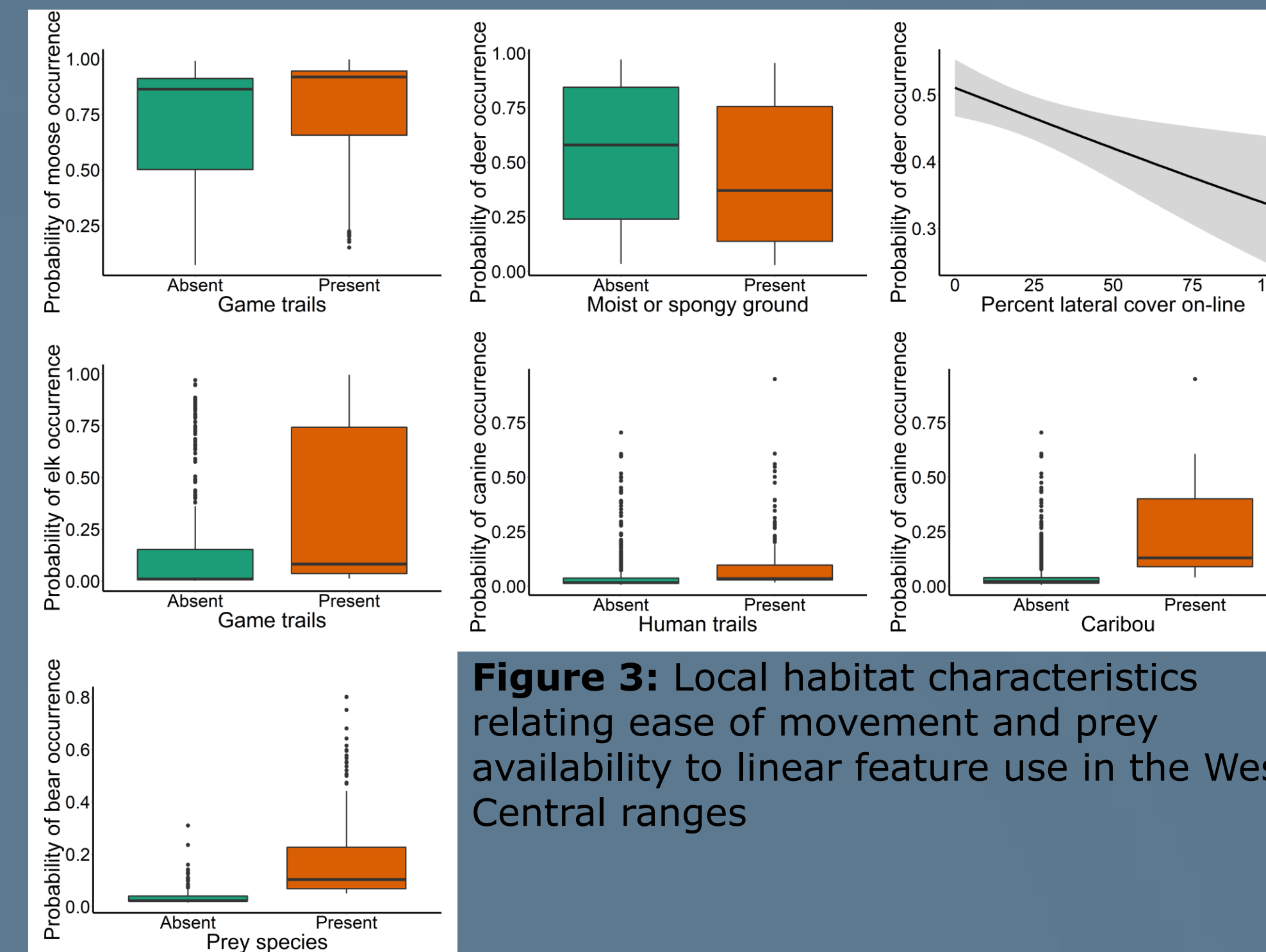


Figure 3: Local habitat characteristics relating ease of movement and prey availability to linear feature use in the West-Central ranges

Vegetation

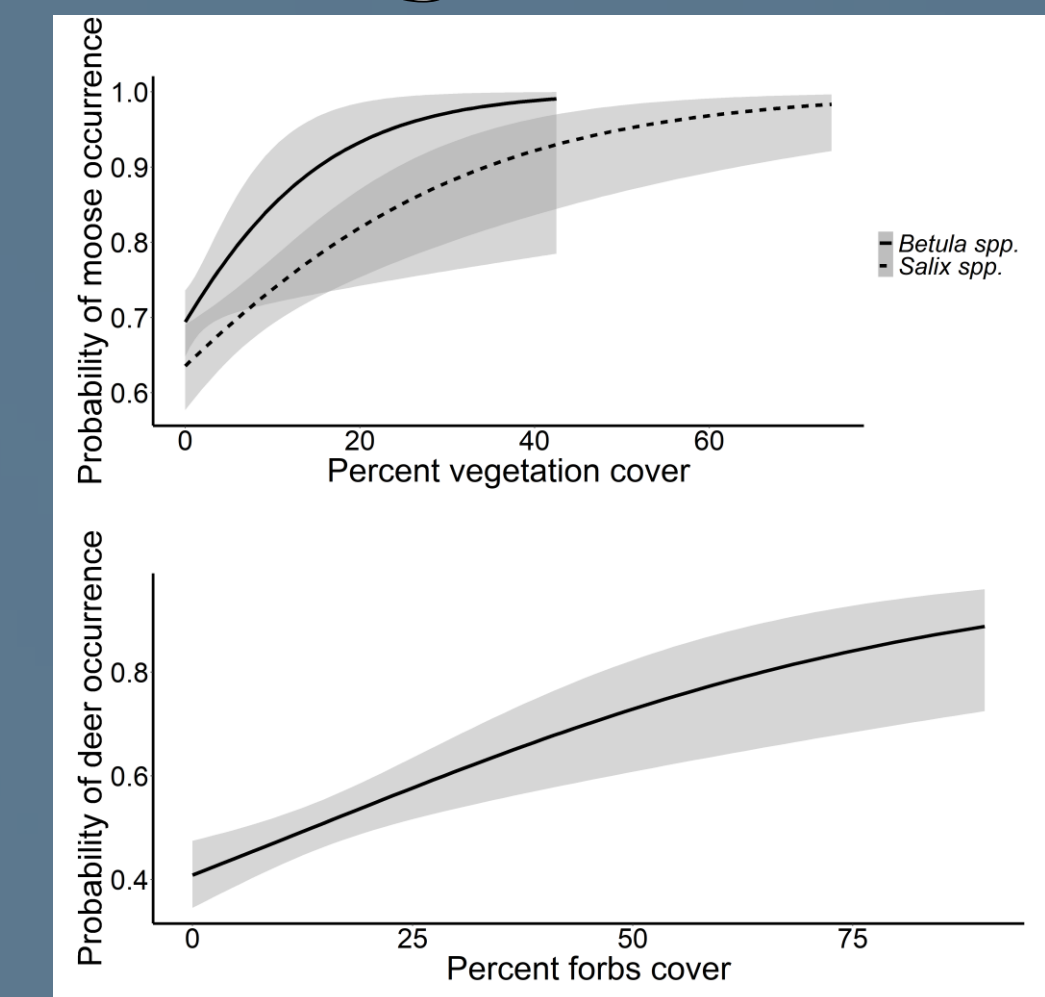


Figure 4: On-line vegetation corresponding to moose and deer linear feature use in the West-Central caribou ranges

Methods

Study area & sampling design

- Linear features (seismic lines, pipelines, old roads) within four caribou ranges in West-Central Alberta (Little Smoky, A La Peche, Redrock-Prairie Creek, and Narraway) and one caribou range in north-west Alberta (Chinchaga)
- Established sampling plots along linear features (0, 100, and 500 m from access road) during summers of 2014 and 2015

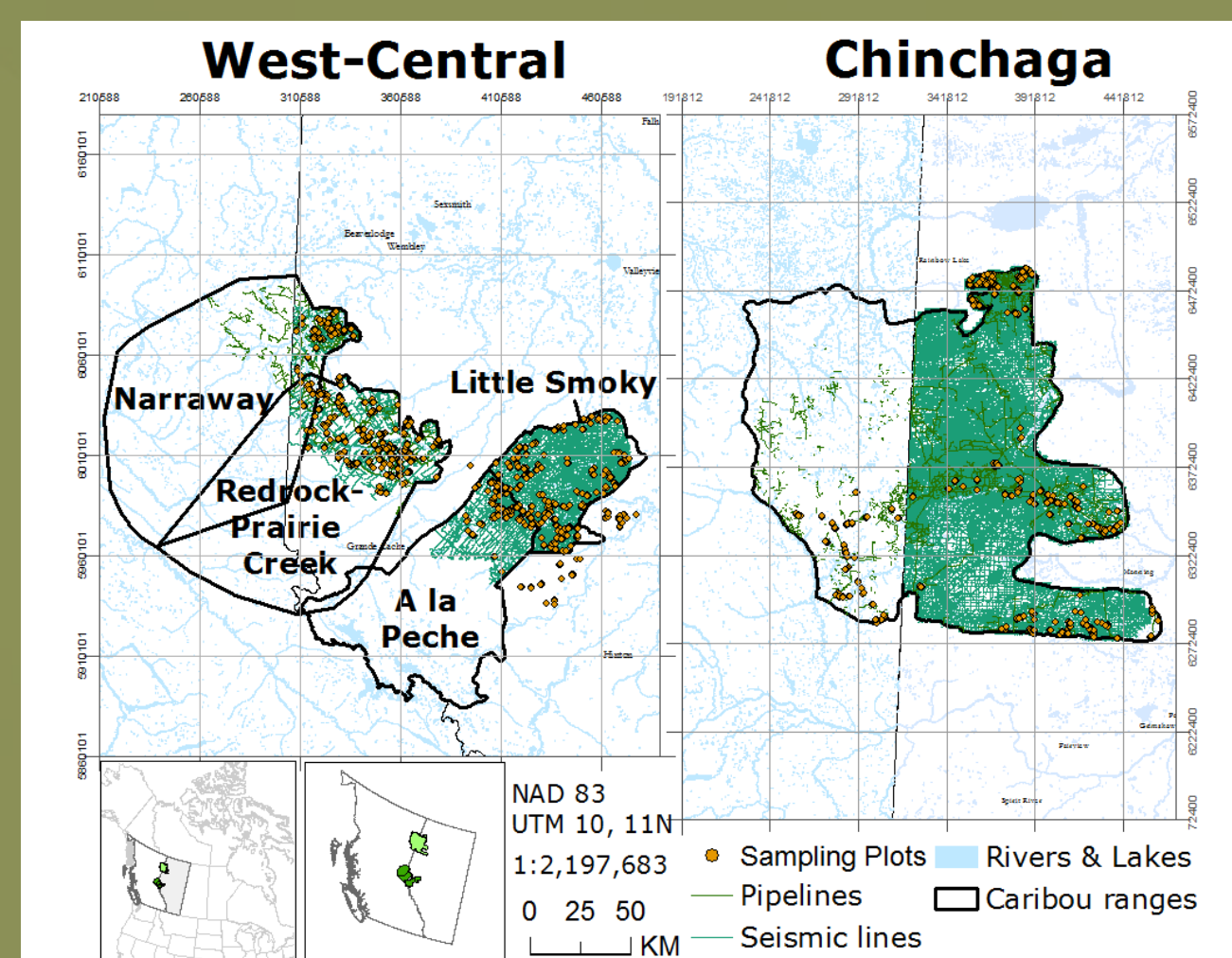


Figure 1: Overview of the linear feature footprints and sampling plots within West-Central and Chinchaga caribou ranges (BC seismic data unavailable in Chinchaga)

Table 1: Working hypotheses and model forms used to explore factors explaining wildlife use of linear features

Data collection & analysis

- Recorded wildlife track and sign for moose, deer, elk, canines and bears along linear features; measured forest and line characteristic data and vegetation percent cover on-line, at line edges, and off-line
- Built binomial mixed-effects models for each wildlife taxa corresponding to hypotheses 1-3, and binomial models corresponding to hypothesis 4 for ungulates and bears (Table 1); used backward selection to optimize model fit, and combined final variables from hypotheses 1-3 into a global model

Hypothesis	Description	Model covariates
1) Ease of movement	Trails, soil type, and on-line vegetation characteristics that influence movement along lines best explain wildlife use of linear features	humanTrail + gameTrail + DrySoil + MoistSoil + SpongySoil + WetSoil + Online_LateralVegCover + Online_VegHt
2) Risk avoidance	Surrounding forest characteristics and presence of humans or predators best explain wildlife use of linear features	Offline_TreeHt + Offline_LateralVegCover + Human + Bear + Canine
3) Prey availability	Presence of prey species best explain predator use of linear features	1) Moose + Deer + Elk + Caribou 2) AllPrey
4) Forage availability	Vegetation that provides forage subsidy best explains ungulate and bear use of linear features	Alnus + Betula + Carex + Forbs + Graminoids + Rhododendron + Salix + Trifolium + Vaccinium + VAVI

Conclusions

- All species use linear features for ease of movement (more likely to use linear features with game trails or human trails)
- Predators use linear features for prey availability
- Moose and deer use linear features for forage availability (*Salix* and *Betula* for moose, forbs for deer) in West-Central ranges

Management implications

To deter linear feature use by caribou predators and alternate prey species, **restoration should focus on creating movement barriers** that inhibit trail formation and **replacing early seral vegetation** that provide forage for moose and deer.

Funding provided by: Forest Resource Improvement Association of Alberta, Alberta Upstream Petroleum Research Fund, BC Oil & Gas Research & Innovation Society, Environment & Climate Change Canada, Mercer International, Manning Diversified Forest Products, Foothills Landscape Management Forum, Jupiter Resources, Paramount Resources, Talisman Energy, Canadian Natural Resources, Miller Western, Tolko Industries, Vanderwell Contractors



fRI Research
Informing Land & Resource Management

Twitter: @erin_tatt

Email: etattersall@friresearch.ca

Thanks to: Amanda MacDonald, Meghan Anderson, Jen Dillon, Leonie Brown, Becky Viejou, Brianna Knox, Christina Lambert, Flurina Deagle, Jillian Halbert, and Kelsey Ridley for field data collection

References Cited
¹DeMars, C. A., & Boutin, S. (2018). Nowhere to hide: Effects of linear features on predator-prey dynamics in a large mammal system. *Journal of Animal Ecology*, 87(1), 274-284.
²Peters, W., Hebblewhite, M., Decesare, N., Cagnacci, F., & Musiani, M. (2013). Resource separation analysis with moose indicates threats to caribou in human altered landscapes. *Ecography*, 36, 487-498.
³Latham, A. D. M., Latham, M. C., Knopff, K. H., Hebblewhite, M., & Boutin, S. (2013). Wolves, white-tailed deer, and beaver: Implications of seasonal prey switching for woodland caribou declines. *Ecography*, 36, 1276-1290.
⁴Tattersall, E. R., Burgar, J. M., Fisher, J. T., & Burton, A. C. (2019). Mammal seismic line use varies with restoration: Applying habitat restoration to species at risk conservation in a working landscape. *Biological Conservation*, 241(November 2019), 108295.