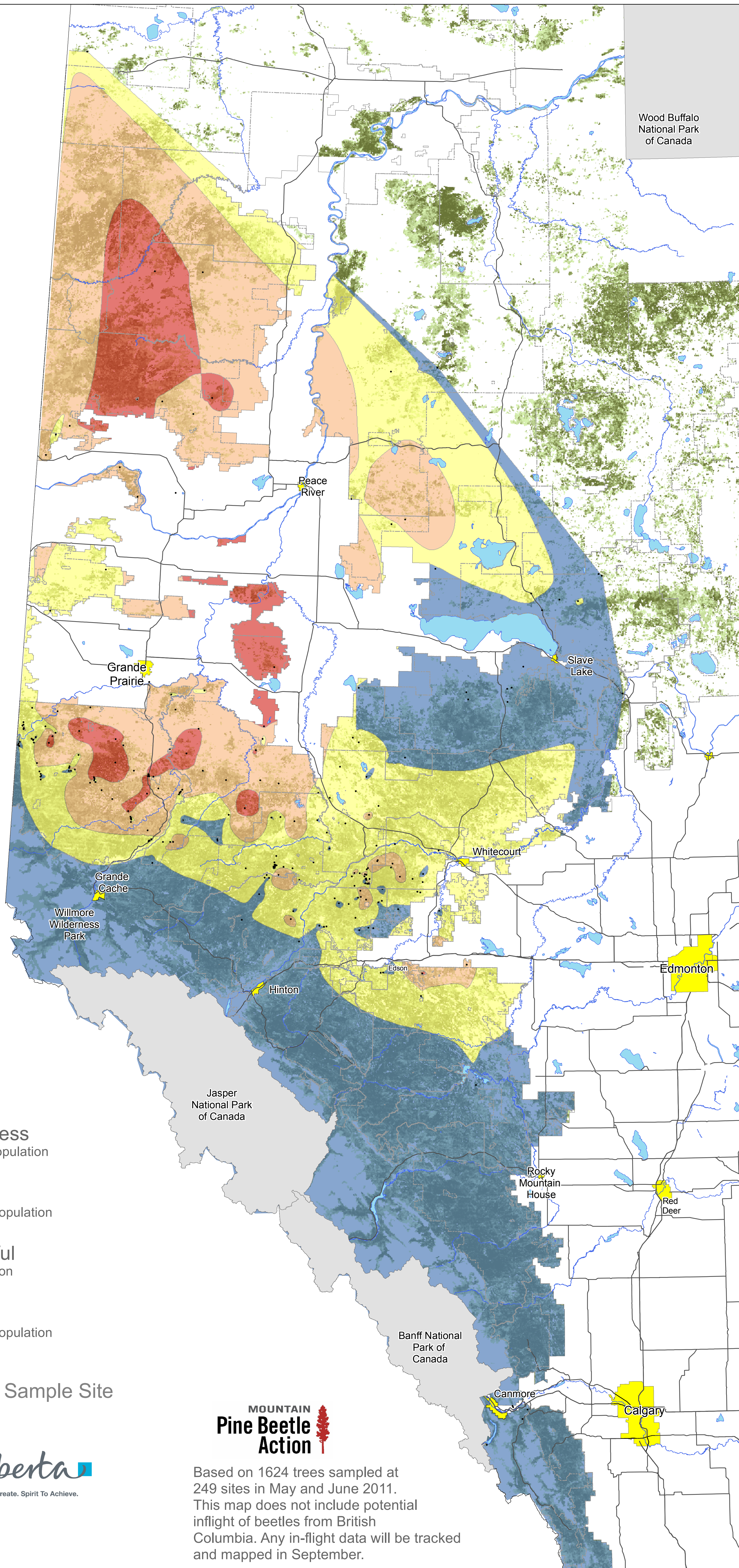


Spring 2011

Mountain Pine Beetle

Population Forecast Survey



Relative Status of the Beetle Population

Extremely High Success
-Indicative of an increasing population

Highly Successful
-Indicative of an increasing population

Moderately Successful
-Indicative of a static population

Low Success
-Indicative of a decreasing population

Pine Forests **Sample Site**

**Government
of Alberta**

Alberta
Freedom To Create. Spirit To Achieve.

**MOUNTAIN
Pine Beetle
Action**

Based on 1624 trees sampled at 249 sites in May and June 2011. This map does not include potential inflight of beetles from British Columbia. Any in-flight data will be tracked and mapped in September.