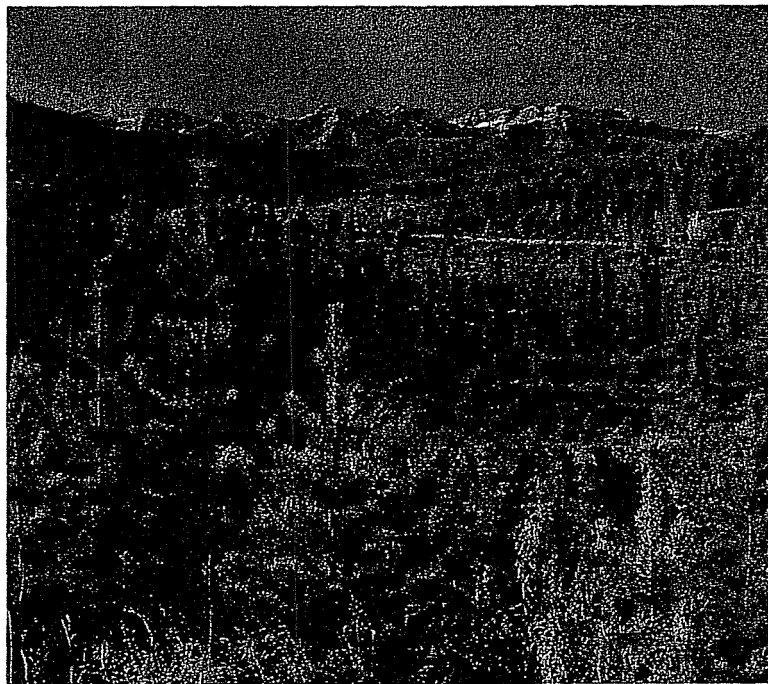


# *Foothills Forest*

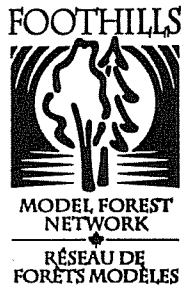


Annual Report  
1992/93



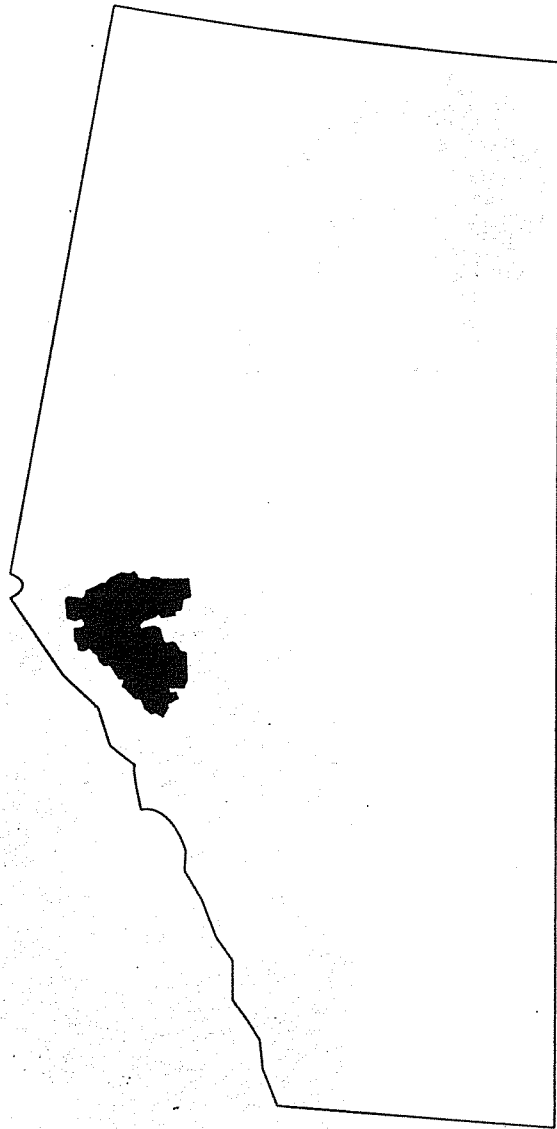
THE MODEL FOREST  
PROGRAM

LA PROGRAMME  
DE LA FORÊT MODÈLE



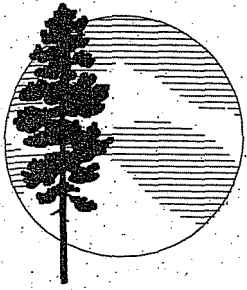
**Foothills Model Forest  
(boreal, subalpine and montane forest regions)**

Weldwood of Canada Limited	1,012,119 ha
Forest Management Agreement Area	
Crown Forest Management Units	202,962 ha
Cache Percotte School Forest	2,933 ha
<hr/>	
<b>Total Land Base</b>	<b>1,218,014 ha</b>



**Contents**

Transmittal Letter .....	3
President's Message .....	4
Overview .....	5
Resource Information Planning .....	7
Systems	
Integrated Resource Management .....	8
Technology Transfer/Public Awareness .....	9
and Education	
Financial Statements .....	10
Auditor's Report .....	12
Partners List .....	15



**Foothills Forest**

Box 6330  
Hinton, Alberta  
T7V 1X6

Phone:  
(403) 865 8329  
865 8330

Fax:  
(403) 865 8266

October 15, 1993

The Honourable Barbara Sparrow  
Minister Designate of Natural Resources Canada  
Room 322, West Block  
House of Commons  
Ottawa, Ontario  
K1A 0A6

May it please your Honour:

On behalf of the joint venture parties and partners involved in Alberta's Model Forest Project, I respectfully submit the Annual Report of the Foothills Forest for the fiscal year ended March 31, 1993.

Robert W. Udell, R.P.F.  
President  
Foothills Forest



RÉSEAU DE  
FORÊTS MODÈLES  
MODEL FOREST  
NETWORK



## President's Message

The incorporation of the Foothills Forest in 1992 marked the culmination of months of work in an effort to secure our place as one of Canada's Model Forests under the Green Plan's Partners in Sustainable Development of Forests program.

It also helped to initiate work on a wide range of activities that we hope, over the course of the next five years, will create a true working model of sustainable forest management that can be used not only here in Canada but also around the world.

Our belief is that the Foothills Forest, built around Weldwood's 37 year history of progressive forest management, is uniquely placed to realize the vision of sustainable development and integrated resource management through both conservation and cooperation.

Over the past year, significant amounts of time and effort have gone into developing research activities and programs directed towards the overall goal of developing and recommending an integrated resource management strategy for the Foothills Forest. These initiatives fall under a number of major categories including: Resource Information and Planning Systems, Integrated Resource Management, Commercial Use, Environment/Land Status, Forest Operations - Timber Harvesting, Forest Operations - Silviculture, Technology Transfer/Public Awareness and

Education, and the Community Forest. Only three of the afore mentioned subject areas have been reported on in this annual report. Additional information on each area will be provided in future annual reports as the entire project evolves from the planning to the implementation stage.

Although the program will be scaled down out of necessity, we expect many of the broad coalition of 73 partners that supported the original proposal to remain directly or indirectly involved in various aspects of this project. They represent a cross section of government, industry, special interest groups, and the public. It is hoped that such a diverse representation of interests will help us to achieve our overall goal.

In review, 1992-93 was a building year for the Foothills Forest. It allowed us to chart a course for the remainder of our five year tenure in terms of designing and implementing projects to address some of the major information gaps and hurdles now facing forest resource managers.

We believe that we have built a strong foundation for future years work and look forward to 1993-94.

Robert W. Udell, R.P.F.  
President  
Foothills Forest



Weldwood of Canada Limited  
Hinton Division



Alberta  
ENVIRONMENTAL PROTECTION





## Overview

The Foothills Forest is one of a number of Model Forests which make up Canada's Model Forest Network. The network is funded under Canada's Green Plan for a Healthy Environment, Partners in Sustainable Development of Forests program.

The Partners in Sustainable Development of Forests program has been developed to demonstrate Canada's commitment to sustainable development and to maintaining the health of our forests for the benefit of people everywhere.

The sponsoring partners of the Foothills Forest share a common vision of sustainable development and integrated management of forest resources through conservation and cooperation.

To achieve this goal, the Foothills Forest adminis-

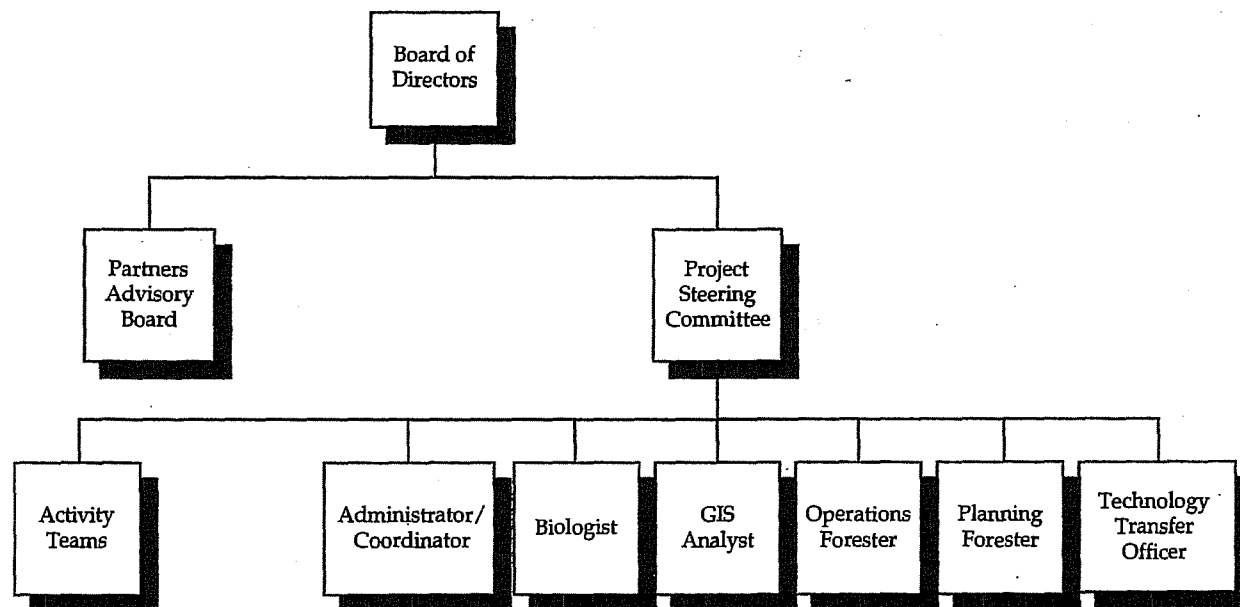


## CANADA'S GREEN PLAN LE PLAN VERT DU CANADA

trative structure has been designed to be both simple and effective. The structure is flexible enough to respond as both partnerships and projects evolve.

The Board of Directors, which includes the President of the Foothills Forest, has overall

## Foothills Forest Organizational Structure





responsibility for the Foothills Forest project. The Board is comprised of 10 members with representation from the three sponsoring partners ( Weldwood of Canada Limited (Hinton Division), the Alberta Forest Technology School, and Alberta's Department of Environmental Protection), as well as from Environment Canada (Jasper National Park). Two additional members are elected to serve on the Board from the remainder of the 73 partner groups and organizations involved in the Foothills Forest project.

The Partners Advisory Committee is a 12 member group made up entirely of elected representatives from the 73 partner coalition. This group, working in conjunction with the Project Steering Committee, is responsible for helping to identify any potential information gaps that may exist in the development of work plans and making recommendations to the Board of Directors on proposed plans and activities.

The Project Steering Committee is responsible for the overall coordination and continuity of the

#### **Foothills Forest Officers and Board of Directors**

##### **Chairman of the Board**

Don Laishley  
Forest Resource Manager  
Weldwood of Canada Limited (Hinton Division)

##### **President**

Robert Udell  
Forest Planning Manager  
Weldwood of Canada Limited (Hinton Division)

##### **Treasurer**

Martin Ellefson  
Divisional Comptroller  
Weldwood of Canada Limited (Hinton Division)

##### **Secretary**

Marsha Spearin  
Administrative Coordinator  
Weldwood of Canada Limited (Hinton Division)

Dr. Jim Beck  
Professor, Forest Management  
University of Alberta

Colin Edey  
Senior Environmental Planner  
Nova Corporation

Foothills Forest project. The group, with representation from Weldwood, the Forest Technology School, Alberta's Land and Forest Services and Fish and Wildlife Division, and Jasper National Park, prepare the annual work plans, five-year work plans and the Annual Report.

The actual projects and activities that will generate the necessary information to help us to reach our goal of sustainable development will be carried out or administered by Foothills Forest staff including; an Administrator/Coordinator, Operations Forester, Geographic Information Systems Analyst, Technology Transfer Officer, and a Biologist. The Foothills Forest also provided opportunities for seven graduate students from the University of Alberta and University of Calgary during 1992/93.

The Land and Forest Services Division of Alberta's Department of Environmental Protection has seconded a full time planning forester to the project for its duration and Jasper National Park has also devoted one full-time position to Park-related projects.

Frank Cardinal  
Director, East Slopes Region  
Fish and Wildlife Services

Bill Fairless  
Superintendent, Edson Forest  
Land and Forest Services

Gaby Fortin  
Superintendent, Jasper National Park  
Parks Canada

Dennis Quintilio  
Director  
Forest Technology School

Ross Risvold  
Instructor  
Forest Technology School

Ron Staple  
Vice-President, Pulp Operations  
Weldwood of Canada Limited  
(Hinton Division)





## Resource Information and Planning Systems

Sound resource management decisions are based on an evaluation of accurate, up-to-date resource information. The amount of information that is now available is enormous and continues to grow at a rapid pace. In order to effectively manage this large volume of data, resource managers have turned to Geographic Information Systems (GIS).

One of the Foothills Forests' primary objectives is to develop a Decision Support System (DSS) that will allow resource managers to evaluate various combinations of land uses to meet the wants and needs of the people of Alberta. The DSS will allow the user to look at the forest at various points in the future based on predetermined criteria for a number of resource based values (ie. biodiversity, timber, wildlife, recreation, etc.). One can then evaluate the ability of the forest landscape to provide for these resource values based on various management strategies.

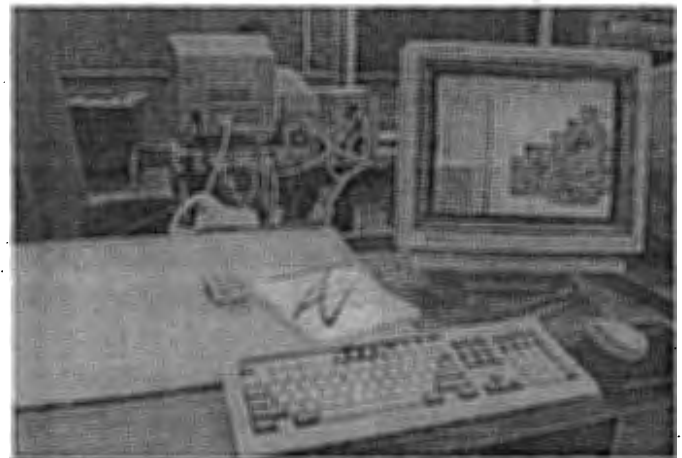
### GIS Operational Configuration

The first step in this process was taken in 1992-93 with the purchase of a Unix-based data server which will provide the necessary computing power to allow many simultaneous users of the system. The system will also provide sufficient storage requirements for the resource data base that will be required to create the DSS. A full page colour electrostatic plotter was also purchased, with assistance from Weldwood of Canada, for the production of high quality maps that will be used in all aspects of forest resource management.

### GIS Technology Transfer

The need for GIS training and implementation is becoming very apparent as more and more resource managers move towards GIS as a useful resource management tool.

Alberta's Forest Technology School provides an ideal setting for such a training facility with on-site residence, classroom facilities, and a working laboratory minutes from the school. To meet this growing demand, the Foothills Forest has established a 10 station ArcInfo training lab in the school. The lab itself features a Unix-based server and 10 PC based workstations complete with digitizing tablets for each station. In the future, GIS students will be able to use real data and applications to learn how GIS can be used in an operational setting.



### Digital Inventory

Many of the decisions that must be made by resource managers are based upon spatial relationships between various resources on the land base. As an example, "good" elk winter range must have food within 100 metres of adjacent thermal cover. This type of information is critical to the success of the Foothills Forest DSS.

To meet this requirement for spatial data, work has begun on completing the required spatial inventory for the entire Foothills Forest landbase with completion expected in the fall of 1993. This digital information will provide the basis for our DSS and all of the associated models that will be created over the next four to five years.



## Integrated Resource Management

The lands and resources of the Foothills Forest support a wide variety of industrial and other uses. Managing these resources employing the principles of sustainable development is an ongoing challenge and the primary goal of the Foothills Forest.

Various provincial policies, plans and statutes provide the framework for integrated resource planning and land use. Integrated resource management activities started in 1983 when Weldwood's Forest Management Agreement area, which makes up the bulk of the Foothills Forest's 1.2 million hectare land base, was designated as an Alberta model for integrated timber/wildlife management. In 1988, Weldwood and Alberta's Department of Forestry, Lands and Wildlife expanded the integrated timber/wildlife process to include a joint timber/habitat supply analysis process. Procedures have also been developed by both Weldwood and the provincial government to integrate other forest uses such as industrial activities, grazing, trapping, and recreation.

This historic background in integrated resource management has helped to establish the groundwork for two high-profile projects.

### Elk Research

Work commenced on a long-term elk study in January of 1993. The purpose of the study is to determine the seasonal distribution and movements of elk in a boreal mixedwood ecosystem and to then examine the impacts of various timber harvest and silvicultural activities on these parameters.

Five elk have been radio collared and ear-tagged and are being monitored on an ongoing basis to establish base-line data. Trapping and collaring efforts were suspended in late March to minimize stress on pregnant cows but will begin again in the summer of 1993.



### Pileated Woodpecker Research

Preliminary work on the Pileated Woodpecker study was completed by the end of the 1992/93 fiscal year. Field work commenced in February of 1993.

The Pileated Woodpecker has been selected as a management indicator species for some forests in the United States. This has directed the United States Forest Service to manage National Forests for Pileated Woodpecker habitat sufficient to ensure the continued existence of the species. Weldwood has also chosen the Pileated Woodpecker as a management species for both their Forest Management Agreement area and the Foothills Forest. The study will allow us to collect ecological information on Pileated Woodpecker's to evaluate and revise the preliminary habitat suitability index model for the Foothills Forest DSS. Because at least 45 other species are associated with Pileated Woodpecker habitat, validation of the preliminary habitat model is a high priority.





## Technology Transfer/Public Awareness and Education

The Forest Technology School, one of the sponsoring partners in the Foothills Forest, offers a unique program in that it combines a technical forestry diploma program with an extensive in-service training program on provincial, national and international levels. Over 6,000 students took part in the various courses offered at the school in 1992-93.

Building strong professional and public technology transfer programs through existing contacts at the School will be a key component of sustainable development of resources in the Foothills Forest.

### International Technology Transfer

The first step in transferring advances in sustainable development to other nations through the Foothills Forest was taken in 1992-93. Contacts were established with the Canadian International Development Agency and other international development groups in an effort to generate additional interest and support for this initiative. Discussions with these and other groups will continue in future years with specific information programs developed to suit the needs of the intended audience.

The Foothills Forest initiated the production of two separate newsletters.

### InForM

The InForM newsletter, short for integrated forest management, was developed and distributed to the many partner organizations involved in the Foothills Forest project. The newsletter is designed to keep the partners informed on the current status of projects and activities relating to the Foothills Forest and is now being circulated on a bi-monthly basis as many of our projects start up.

### Newsletter

The Foothills Forest newsletter includes reports and general interest articles on various projects going on in the Forest and is currently distributed to over 10,000 homes in and around the Hinton area.

### Tour Packages

Work has started on the development of tour packages related to the Foothills Forest. The packages will be designed to highlight forest management projects, reforestation, wildlife, recreation, and other natural and historic features throughout the area. This program is part of a larger activity that includes the development of potential ecotourism opportunities within the forest as well as an interpretive centre and related program. Ties will also be made to a number of demonstration areas that will be developed to showcase various resource management strategies and practices.



MODEL FOREST  
NETWORK  
RÉSEAU DE  
FORÊTS MODÈLES



# Consolidated Financial Statement

## Statement of Revenue

For the year ended March 31, 1993 (Audited)

	1992/93	1992/93 In-Kind/\$ Cont.
Forestry Canada	807,800	232,000
Wildlife Habitat Canada	10,000	
Weldwood of Canada		153,485
Parks Canada		5,200
Forest Technology School		52,000
Land and Forest Services		51,237
Fish and Wildlife Recreation, Parks & Wildlife Foundation		27,008
Canadian Wildlife Service		12,500
Trout Unlimited		7,000
R.H. Swanson & Associates		200
University of Alberta		490
Department of Fisheries and Oceans		15,632
Northern River Basin Study		1,200
Interest Earnings	877	316
<b>Total Revenue</b>	<b>\$818,677</b>	<b>\$559,068</b>

Prepared by Foothills Forest Corporation,  
September, 1993

## Statement of Expenditures

For the year ended March 31, 1993 (Audited)

	1992/93	1992/93 In-Kind/\$ Cont.
Finance/Administration and Personnel	109,468	342,853
Resource Information Planning Systems	325,288	5,000
Integrated Resource Management	36,474	70,635
Technology Transfer/ Public Awareness and Education	2,287	3,380
GST (Note 4)	14,393	
Non-Administered Projects		232,000
<b>Total Expenditures</b>	<b>\$487,910</b>	<b>\$559,068</b>

Prepared by Foothills Forest Corporation,  
September, 1993





# Summary of In-Kind and Other Financial Support

## Contribution

<u>Project Area</u>	<u>Source</u>	<u>Total</u>	
<b>Finance/Administration &amp; Personnel</b>	Weldwood	125,720	
	Forest Technology School	51,620	
	Land & Forest Services	47,921	
	Fish & Wildlife	12,592	
	Parks Canada	5,200	
	University of Alberta	5,000	
<b>Resource Information and Planning Systems</b>			
- Geographic Information Systems	Weldwood	5,000	
<b>Integrated Resource Management</b>			
- Elk Study	Fish and Wildlife	11,000	
	Weldwood	10,000	
	Nova Corp.	800	
- Bird Inventory Study	R, P & W	12,500	
	CWS	7,000	
- Mammal/Furbearer Inventory	Fish & Wildlife	3,216	
- Wildlife Responses to Partial Cuts	Weldwood	50	
- Pileated Woodpecker Study	Weldwood	12,715	
- Spatial Habitat Supply Analysis	University of Alberta	10,000	
- Aquatic/Watershed	Land & Forest Services	316	
	Fish & Wildlife	200	
	Trout Unlimited	200	
	R.H. Swanson	490	
	University of Alberta	632	
	Dept. of Fisheries/Oceans	1,200	
	Northern River Basin Study	316	
<b>Technology Transfer/Public Awareness &amp; Education</b>			
	- Newsletter	Forest Technology School	3,000
	- Tour Packages	Forest Technology School	380
<b>Sub-Total</b>		<b>\$327,068</b>	
<b>Projects Not Administered by Foothills Forest</b>			
	Canada/Alberta Partnership Agreement in Forestry	152,000	
	Green Plan	50,000	
	A-Base (administration)	30,000	
<b>Sub-Total</b>		<b>\$232,000</b>	
<b>Total</b>		<b>\$559,068</b>	





AUDITORS' REPORT

To the Board of Directors of

Foothills Forest:

At the request of Foothills Forest (a non-profit company incorporated in Alberta), we have audited the Schedule of Cash Receipts and Disbursements of Foothills Forest for the period from November 2, 1992 (date of incorporation) to March 31, 1993. This financial information is the responsibility of the management of Foothills Forest. Our responsibility is to express an opinion on this financial information based on our audit.

We conducted our audit in accordance with generally accepted auditing standards. Those standards require that we plan and perform an audit to obtain reasonable assurance whether the financial information is free of material misstatement. An audit includes examining, on a test basis, evidence supporting the amounts and disclosures in the financial information. An audit also includes assessing the accounting principles used and significant estimates made by management, as well as evaluating the overall presentation of the financial information.

As described in Note 2, the Schedule of Cash Receipts and Disbursements was prepared on the basis of cash received and disbursements made and is not intended to be a presentation in conformity with generally accepted accounting principles.

In our opinion, this schedule presents fairly, in all material respects, the cash receipts and disbursements of Foothills Forest for the period from November 2, 1992 (date of incorporation) to March 31, 1993.

*Arthur Andersen + Co.*

August 9, 1993

Vancouver, British Columbia.



MODEL FOREST  
NETWORK  
RESEAU DE  
FORÊTS MODÈLES




---

**SCHEDULE OF CASH RECEIPTS AND DISBURSEMENTS**
**FOR THE PERIOD FROM NOVEMBER 2, 1992**
**(DATE OF INCORPORATION) TO MARCH 31, 1993**
**RECEIPTS:**

Grant- Government of Canada- Forestry Canada funding (Note 3)		\$ 807,800
Wildlife Habitat Canada		10,000
Interest earnings		877
		<hr/>
Total receipts		818,677
		<hr/>

**EXPENDITURES:**

Finance/administration and personnel- Contracted consultants	\$ 68,101	
Organization	14,395	
Computers	14,225	
Travel	6,678	
Office operations	3,199	
Vehicles	2,870	109,468
	<hr/>	
Resource information and planning systems- Geographic information systems	317,283	
Digital inventory	8,005	325,288
	<hr/>	
Integrated resource management- Elk study	27,845	
Bird Inventory study	7,000	
Aquatic/watershed	1,629	36,474
	<hr/>	
Technology transfer/public awareness and education- Tour packages	1,320	
Newsletter	967	2,287
	<hr/>	
GST to be received (Note 4)		14,393
		<hr/>
Total expenditures		487,910
		<hr/>
UNEXPENDED FUNDS		\$ 330,767
		<hr/> <hr/>



## FOOTHILLS FOREST

### NOTES TO SCHEDULE OF CASH RECEIPTS AND DISBURSEMENTS

MARCH 31, 1993

#### 1. OPERATIONS

Foothills Forest was incorporated in Alberta on November 2, 1992 as a non-profit entity. It is a joint venture between Weldwood of Canada Limited and the Alberta Department of Forestry, Lands and Wildlife formed to perform research on sustainable development and integrated management of forest resources through conservation and cooperation. The Foothills Forest comprises 1,218,014 hectares of forest in west central Alberta, adjoining Jasper National Park.

The Foothills Forest project is funded mainly by the Government of Canada, Forestry Canada, with the remaining funding coming in the form of cash and in-kind donations.

#### 2. ACCOUNTING POLICIES

- (a) Receipts and expenditures are recorded on a cash basis.
- (b) Non-cash contributions made during the period have not been recorded.

#### 3. FORESTRY CANADA FUNDING

1992/93 allocation	\$ 380,676
1993/94 allocation- In advance	140,000
1995/96 allocation- In advance	277,800
Payment made directly by Forestry Canada	9,324
	<hr/>
	\$ 807,800
	<hr/> <hr/>

#### 4. GOODS AND SERVICES TAX

Foothills Forest is a non-profit venture funded by the Government of Canada and is entitled to a rebate of 50% of the Goods and Services taxes ("GST") paid.





# Foothills Forest Partner Groups and Organizations

## Province of Alberta

Alberta Department of Tourism, Recreation and Parks  
Alberta Provincial Parks Service  
Alberta Environmental Centre  
Alberta Research Council  
Alberta Solicitor General Department  
Energy Resources Conservation Board  
West Yellowhead Community Futures Assoc.

## Industry

Alberta Newsprint Company  
Canadian Association of Petroleum Producers  
Cardinal River Coals Ltd.  
Finning Caterpillar Ltd.  
Gregg River Resources Ltd.  
Hughes Aircraft of Canada Limited  
Luscar Sterco (1977) Ltd.  
Norcen Energy Resources Limited  
Northwood Pulp and Timber Limited  
Nova Corporation of Alberta  
Obed Mountain Coal Company Ltd.  
Pan-Canadian Petroleum Limited  
Petro Canada Inc.  
Weyerhaeuser  
Quadco Equipment Inc.  
Timbco Hydraulics Inc.  
Trans-Alta Utilities Ltd.

## Consultants

Ernst and Young Management Consultants  
R.W. Swanson and Associates  
Sentar Consultants Ltd.

## Local Governments

City of Edmonton  
Improvement District of Yellowhead No.14  
Town of Edson  
Town of Grande Cache  
Town of Hinton

## Professional Organizations

Alberta Registered Professional Foresters Assoc.  
Alberta Forest Technologists Association  
Canadian Institute of Forestry  
Canadian Society of Environmental Biologists  
The Wildlife Society

## Business

Forestry, Oil and Gas Review Quarterly  
Crestwood Hotel

ESRI Canada Ltd.

## Business Associations

Alberta Forest Products Association  
Evergreen Country Tourism Council  
Hinton and District Chamber of Commerce  
Yellowhead Highway Association

## Non-Government Organizations

Alberta Forestry Association  
Alberta Trapper's Association  
Forest Engineering Research Institute of Canada  
Forest Resources Advisory Group (FRAG)  
Hinton Good Companions

## Environmental Non-Government Organizations

The Alberta Fish and Game Association  
Canadian Nature Federation  
Canadian Parks and Wilderness Society  
Canadian Wildlife Federation  
Rocky Mountain Elk Foundation Canada  
Trout Unlimited Canada  
Wildlife Habitat Canada  
World Wildlife Fund Canada

## Native Organizations

Fox Creek Development Association Ltd.  
Metis Nation of Alberta Forestry, Lands and Wildlife Framework Action Committee

## Other Federal Agencies

Canadian Environmental Assessment Research Council  
Parks Canada, Jasper National Park  
Canadian Wildlife Service  
Employment and Immigration Canada  
Forestry Canada, Northern Forestry Centre  
Forestry Canada, Petawawa National Forestry Institute  
Industry, Science and Technology Canada

## Universities, Colleges, Schools

Harry Collinge High School  
Jasper School District  
Northern Alberta Institute of Technology  
Petroleum Industry Training Centre  
The University of Alberta  
The University of Calgary

## International Organizations

Canadian International Development Agency  
The World Bank

## Unions

International Woodworkers of America





***Foothills Forest***

**For more information,  
write or call:**

Foothills Forest  
Box 6330  
Hinton, Alberta  
T7V 1X6  
Telephone: (403) 865-8329  
Fax: (403) 865-8266



**CANADA'S GREEN PLAN  
LE PLAN VERT DU CANADA**